

### REPAIR QUANTITY TABLE

UNDERSIDE OF DECK	QUANTITIES			
	ESTIMATE		ACTUAL	
SHOTCRETE REPAIRS	AREA SF	VOLUME CF	AREA SF	VOLUME CF
UNDERSIDE OF DECK & OVERHANG				
BENT DIAPHRAGMS				
GIRDER REPAIRS				
PRESTRESSED GIRDERS	13.0	4.0		

VALUES IN CHART REPRESENT ESTIMATED REPAIR TOTALS AFTER REMOVAL OF UNSOUND CONCRETE, MIN. OF 1" BEHIND REBAR AND MIN. 2" CLEAR TO SAWCUT, SEE REPAIR DETAILS.

QUANTITIES ASSUME ALL SPALLS AND DELAMINATIONS TO BE 3.5" DEEP.

### NOTES

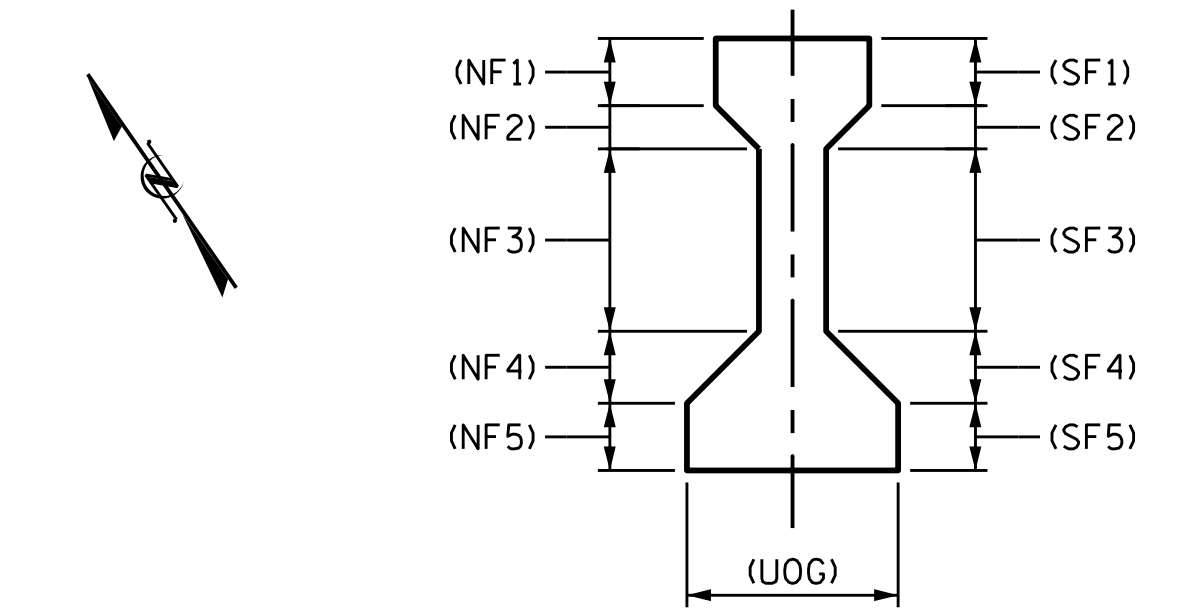
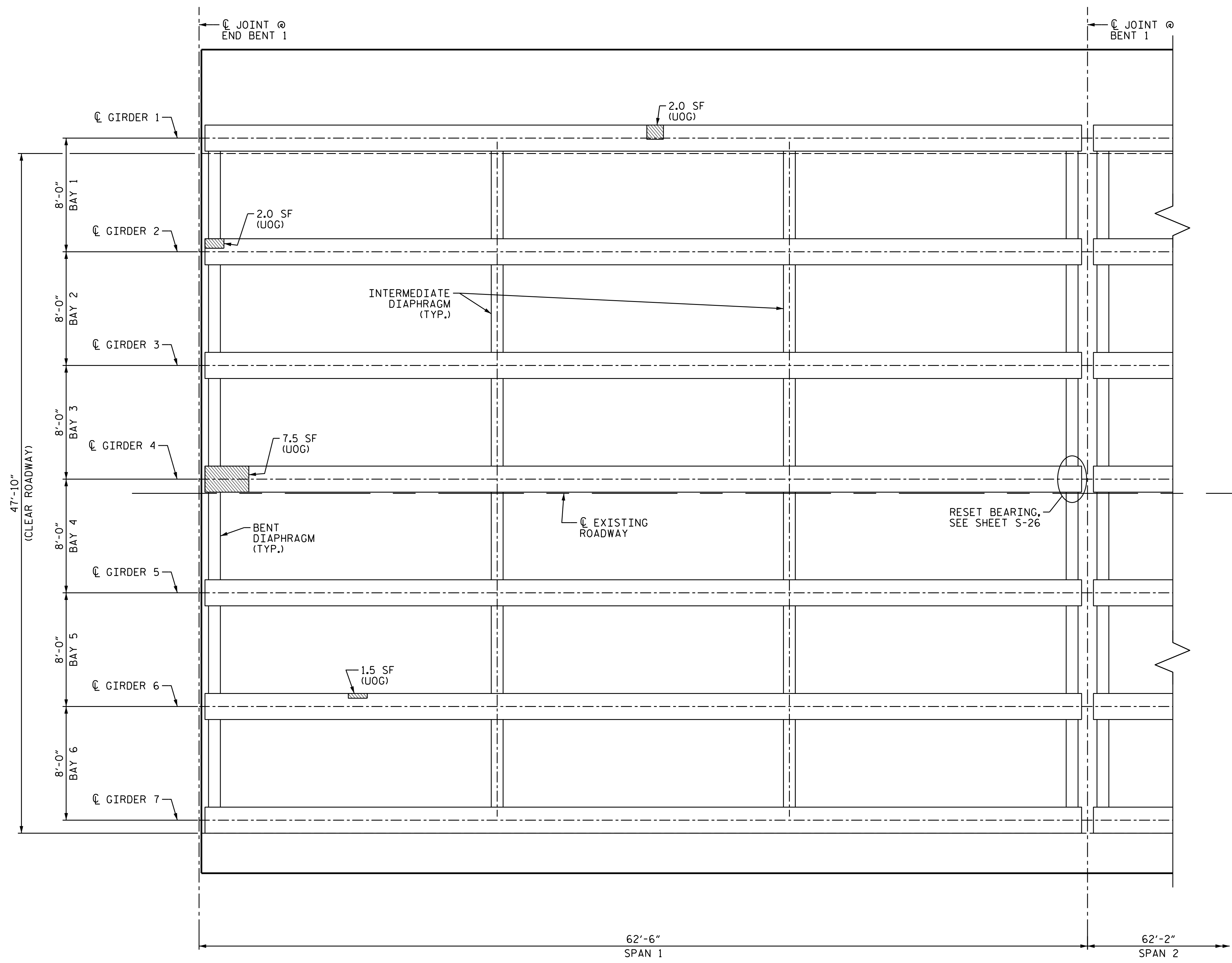
REPAIR LOCATIONS AND ESTIMATE OF QUANTITIES ARE GIVEN WITH THE BEST INFORMATION AVAILABLE, IF ADDITIONAL REPAIRS NOT SHOWN ON THE DRAWINGS ARE DEEMED NECESSARY BY THE INSPECTOR OR ENGINEER THE CONTRACTOR SHALL NOTE ON THE DRAWINGS THE APPROXIMATE LOCATION AND DESCRIPTION OF THE REPAIRS AND ADJUST THE ACTUAL QUANTITIES ENTERED INTO THE REPAIR QUANTITY TABLE.

SPANS WILL RECEIVE FULL LENGTH TSA COATING, SEE "PRESTRESSED CONCRETE GIRDERS WITH THERMAL SPRAY ANODE" SPECIAL PROVISIONS AND SHEETS S-28 THRU S-29.

FOR PRESTRESSED GIRDER AND BENT DIAPHRAGM REPAIR DETAILS, SEE "TYPICAL GIRDER AND DIAPHRAGM REPAIR DETAILS" SHEET S-30.

FOR SHOTCRETE REPAIRS, SEE SPECIAL PROVISIONS.

FOR REPAIRS TO PRESTRESSED CONCRETE GIRDERS, SEE SPECIAL PROVISIONS.



TYPICAL GIRDER SECTION  
DAMAGE OF GIRDER LOCATIONS

### PLAN OF SPANS (UNDERSIDE)

#### LEGEND

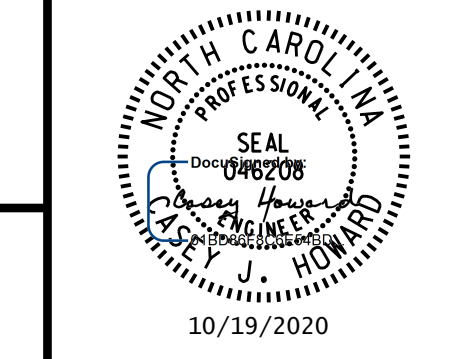
SF	SQUARE FEET		DIAPHRAGM REPAIR
(UOD)	UNDERSIDE OF DECK		GIRDER REPAIR
(BOH)	BOTTOM OF OVERHANG		DECK REPAIR
ERI	EPOXY RESIN INJECTION		

PROJECT NO. 15BPR.19  
 NEW HANOVER COUNTY  
 BRIDGE NO. 640021

SHEET 1 OF 14

STATE OF NORTH CAROLINA  
 DEPARTMENT OF TRANSPORTATION  
 RALEIGH  
 SUPERSTRUCTURE  
 GIRDER & DIAPHRAGM  
 REPAIRS  
 SPAN 1

DOCUMENT NOT CONSIDERED FINAL  
 UNLESS ALL SIGNATURES COMPLETED



#### REVISIONS

NO.	BY:	DATE:	NO.	BY:	DATE:
1			3		
2			4		

SHEET NO.  
S-9  
TOTAL SHEETS  
58

WSP USA Inc.  
 434 FAYETTEVILLE STREET  
 SUITE 1500  
 RALEIGH, NC 27601  
 TEL: 1.919.836.4040  
 LICENSE NO. F-0165

10/18/2020 L:\Raleigh Office Projects\Structures\2018\188906-05 NCDOT - 640021 New Hanover Co.05 Plans\1.0 DGN\401\_050\_15BPR.19\_SMU.G01.S-9.dgn

DRAWN BY: M.J. OSTRISHKO DATE: JUL 2018  
 CHECKED BY: C.J. HOWARD DATE: JUL 2018