

TYPICAL SECTION

LOOKING EAST

NOTES

THE CONTRACTOR IS TO FIELD VERIFY THE EXISTING PEDESTRIAN SAFETY RAILING DIMENSIONS AND SUBMIT SHOP DRAWINGS PRIOR TO PURCHASING MATERIALS FOR THE REMOVAL AND REPLACEMENT OF THE EXISTING RAILING WITH A GALVANIZED RAILING MATCHING THE EXISTING PEDESTRIAN SAFETY RAIL.

MATERIAL AND GALVANIZING ARE TO CONFORM TO THE FOLLOWING SPECIFICATIONS:

RAILING: AASHTO M270 GRADE 36 STRUCTURAL STEEL - GALVANIZED TO AASHTO M111.

SHIMS: SHIMS SHALL MEET THE REQUIREMENTS OF ASTM A570 FOR GRADE 33 OR A611 FOR GRADE C AND SHALL BE GALVANIZED IN ACCORDANCE WITH AASHTO M111.

METAL RAIL POSTS SHALL BE SET NORMAL TO CURB GRADE.

SHIMS SHALL BE USED AS NECESSARY FOR POST ALIGNMENT.

MINIMUM 3/4" DIAMETER HEADLESS FULL THREADED HIGH STRENGTH ADHESIVE ANCHOR RODS SHALL CONFORM TO ASTM F1554 GRADE 36. SELF-LOCKING HEX NUTS SHALL CONFORM TO ASTM A563, AND WASHERS TO F463, TYPE 1. ANCHOR RODS, NUTS AND WASHERS SHALL BE GALVANIZED TO AASHTO M232. AT THE CONTRACTOR'S OPTION STAINLESS STEEL ANCHOR RODS, NUTS AND WASHERS MAY BE USED AS AN ALTERNATE TO THE GALVANIZED IF APPROVED BY THE ENGINEER.

THE CONTRACTOR MAY USE NEW FULL THREADED HIGH STRENGTH ADHESIVELY ANCHORED RODS IN PLACE OF THE EXISTING RAILING'S ANCHORS. LEVEL ONE FIELD TESTING IS REQUIRED, AND THE YIELD LOAD OF 3/4" DIAMETER BOLT IS 10KIPS. FOR ADHESIVELY ANCHORED BOLTS OR DOWELS, SEE THE STANDARD SPECIFICATIONS.

THE CONTRACTOR SHALL INCLUDE IN THE SHOP DRAWING SUBMITTAL THE SELECTED MANUFACTURER'S ADHESIVELY ANCHORED SYSTEM AND SUPPORTING MATERIALS, SUCH AS THE MANUFACTURER'S PRINTED INSTALLATION INSTRUCTIONS (MPII) AND SAFETY DATA SHEET (SDS).

THE GALVANIZED PEDESTRIAN SAFETY RAILING SHALL BE CONTINUOUS FROM END POST TO END POST OF BRIDGE, EACH JOINT IN THE RAIL LENGTH SHALL BE SPLICED AS DETAILED. PANEL LENGTHS SHALL BE ATTACHED TO A MINIMUM OF THREE POST.

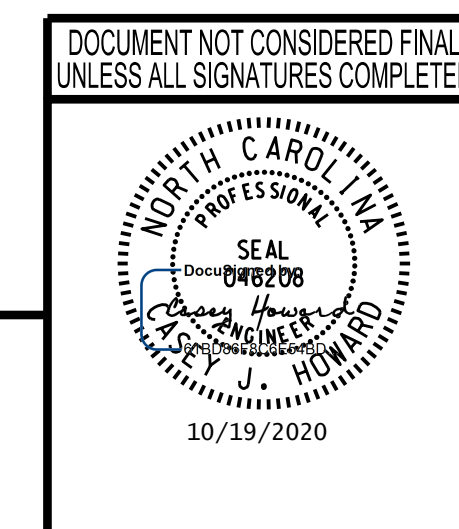
FOR RAIL SPLICE DETAIL REFER TO SHEET S-23.

FOR GALVANIZED PEDESTRIAN SAFETY RAIL, SEE SPECIAL PROVISIONS.

PROJECT NO. 15BPR.19
 NEW HANOVER COUNTY
 BRIDGE NO. 640021

SHEET 1 OF 3

STATE OF NORTH CAROLINA
 DEPARTMENT OF TRANSPORTATION
 RALEIGH
 SUPERSTRUCTURE
 TYPICAL SECTION



wsp
 WSP USA Inc.
 434 FAYETTEVILLE STREET
 SUITE 1500
 RALEIGH, NC 27601
 TEL: 1.919.836.4040
 LICENSE NO. F-0165

REVISIONS						SHEET NO.
NO.	BY:	DATE:	NO.	BY:	DATE:	S-5
1			3			TOTAL SHEETS
2			4			58

10/18/2020 L:\Raleigh Office Projects\Structures\2018\188906-05 NCDOT - 640021 New Hanover Co.05 Plans\1.0 DGN\401_030_15BPR.19_SMU_TS01..S-5.dgn