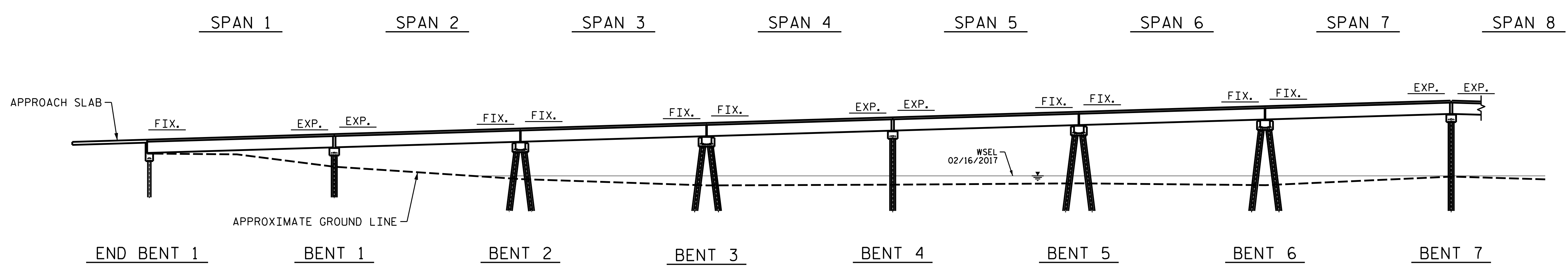


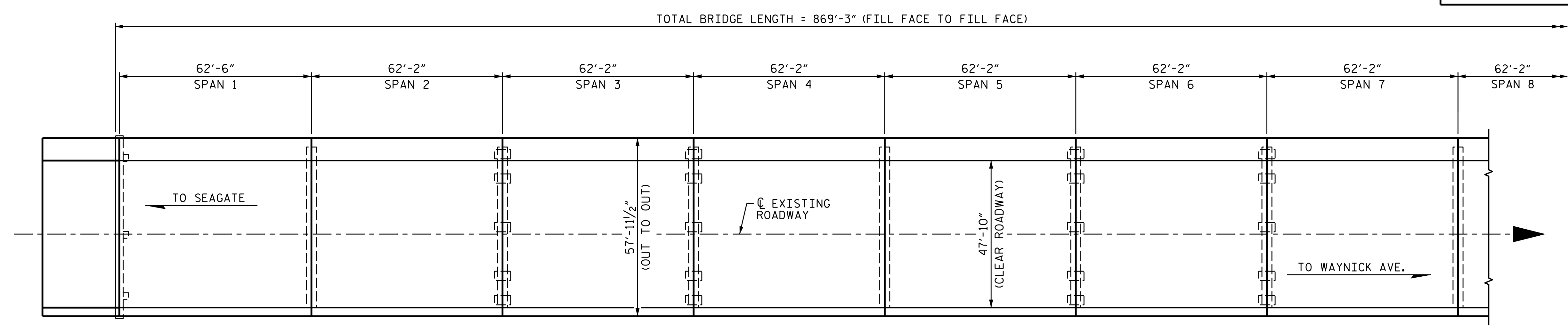
NOTES
 PROFILE INFORMATION IS TAKEN FROM THE ORIGINAL PLANS AND THE ROUTINE INSPECTION REPORT DATED 02/16/2017.
 BRIDGE ORIENTATION CONFORMS TO THE INSPECTION REPORT.



ELEVATION
 SECTION ALONG C OF BRIDGE #21

I hereby certify that this structure was rehabilitated according to these plans or as noted therein.

Resident Engineer _____ Date _____



PLAN
 FOR CLARITY, PILES ARE NOT SHOWN IN PLAN VIEW.
 FOR CLARITY, THREE BAR METAL RAILS ARE NOT SHOWN.
 FOR CLARITY, THE PEDESTRIAN SAFETY RAIL IS NOT SHOWN.

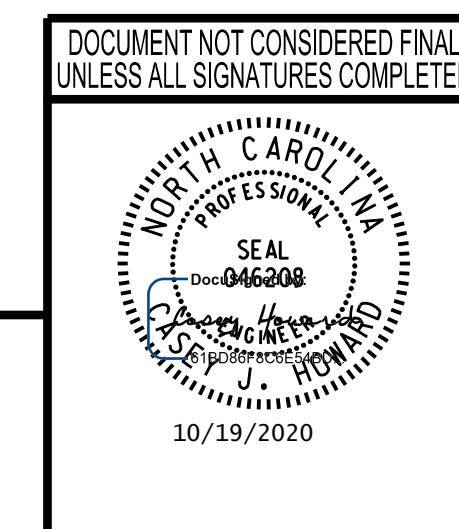
PROJECT NO. 15BPR.19
 NEW HANOVER COUNTY
 BRIDGE NO. 640021

SHEET 1 OF 2

STATE OF NORTH CAROLINA
 DEPARTMENT OF TRANSPORTATION
 RALEIGH

GENERAL DRAWING
 BRIDGE ON US 76
 OVER BANKS CHANNEL

REVISIONS						SHEET NO.
NO.	BY:	DATE:	NO.	BY:	DATE:	S-3
1			3			TOTAL SHEETS
2			4			58



wsp
 WSP USA Inc.
 434 FAYETTEVILLE STREET
 SUITE 1500
 RALEIGH, NC 27601
 TEL: 1.919.836.4040
 LICENSE NO. F-0165

10/18/2020 L:\Raleigh Office Projects\Structures\2018\188906-05 NCDOT - 640021 New Hanover Co.05 Plans\1.0 DGN\401.020.15BPR.19_SMU.GD01.S-3.dgn

DRAWN BY: M.J. OSTRISHKO DATE: JUL 2018
 CHECKED BY: C.J. HOWARD DATE: JUL 2018