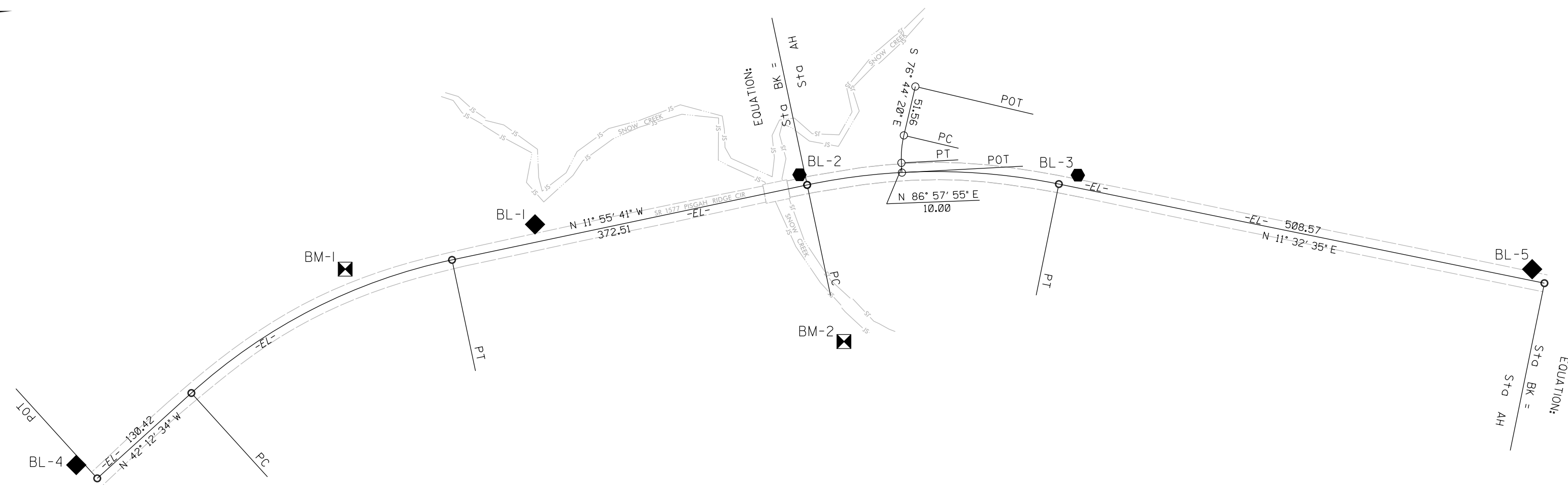
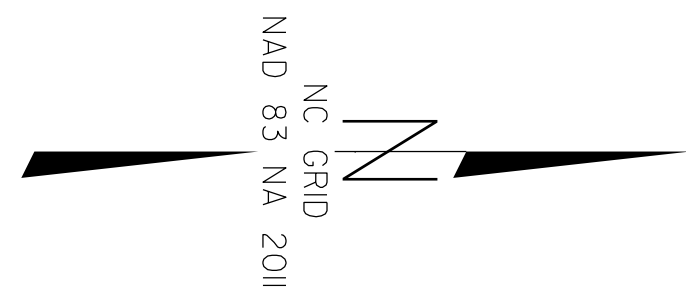


PROJECT REFERENCE NO.	SHEET NO.
BR-0107	RW02C-1
Location and Surveys	

SURVEY CONTROL SHEET

W/ EXISTING CENTERLINE ALIGNMENTS PRIOR TO CONSTRUCTION



.....
 BM1 ELEVATION - 975.36
 N 795284 E 1407886
 BENCH TIE SET IN 18" POPLAR

.....
 BM2 ELEVATION - 949.40
 N 795796 E 1407960
 BENCH TIE SET IN 18" BIRCH

BL	POINT	DESC.	NORTH	EAST	ELEVATION
4		BL - 4	795007.9520	1408086.8750	1001.31
1		BL - 1	795479.2740	1407841.1100	959.50
2		BL - 2	795750.2097	1407788.9340	951.37
3		BL - 3	796035.8410	1407789.3420	965.67
5		BL - 5	796502.0150	1407885.8530	996.93

EL		N	E	BEARING	DIST	DELTA	D	L	T	R
POT		795029.496	1408100.670							
LINE				N 42°12'34.1" W	130.42					
PC		795126.101	1408013.045							
CURVE				N 27°04'07.7" W	300.37	30°16'53.0"(RT)	09°57'52.1"	303.89	155.59	575.00
PT		795393.567	1407876.360							
LINE				N 11°55'41.2" W	372.51					
PC		795758.036	1407799.367							
CURVE				N 00°11'33.2" W	258.31	23°28'16.0"(RT)	09°01'22.6"	260.13	131.91	635.00
PT		796016.346	1407798.499							
LINE				N 11°32'34.8" E	508.57					
POT		796514.626	1407900.265							

DR		N	E	BEARING	DIST	DELTA	D	L	T	R
POT		795869.089	1407698.326							
LINE				S 76°44'19.8" E	51.56					
PC		795857.262	1407748.509							
CURVE				S 84°53'12.6" E	28.35	16°17'45.7"(LT)	57°17'44.8"	28.44	14.32	100.00
PT		795854.735	1407776.743							
LINE				N 86°57'54.5" E	10.00					
POT		795855.265	1407786.729							

NOTES:

- PROJECT CONTROL WAS ESTABLISHED USING GNSS, THE GLOBAL NAVIGATION SATELLITE SYSTEM.
- THE SURVEY CONTROL DATA FOR THIS PROJECT HAS BEEN COMPILED FROM VARIOUS SOURCES. IF FURTHER INFORMATION REGARDING PROJECT CONTROL IS NEEDED, PLEASE CONTACT THE LOCATION AND SURVEYS UNIT.

REVISIONS