

8.17.17.99

-L-	-DR-
PI Sta 12+86.01 $\Delta = 30^{\circ} 16' 53.0''$ (RT) $D = 9^{\circ} 57' 52.1''$ $L = 303.89'$ $T = 155.59'$ $R = 575.00'$	PI Sta 19+38.74 $\Delta = 23^{\circ} 28' 16.0''$ (RT) $D = 8^{\circ} 54' 38.5''$ $L = 263.40'$ $T = 133.58'$ $R = 643.00'$ $SE = 0.06$ $RO = 114'$ $DS = 45$ MPH
PI Sta 10+65.88 $\Delta = 16^{\circ} 17' 45.7''$ (LT) $D = 57^{\circ} 17' 44.8''$ $L = 28.44'$ $T = 14.32'$ $R = 100.00'$	

NAD 83/2011

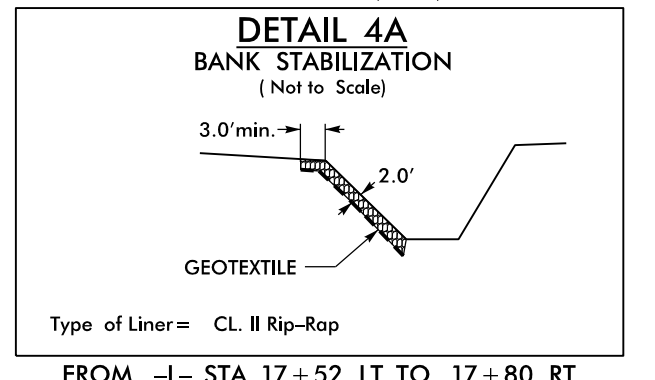
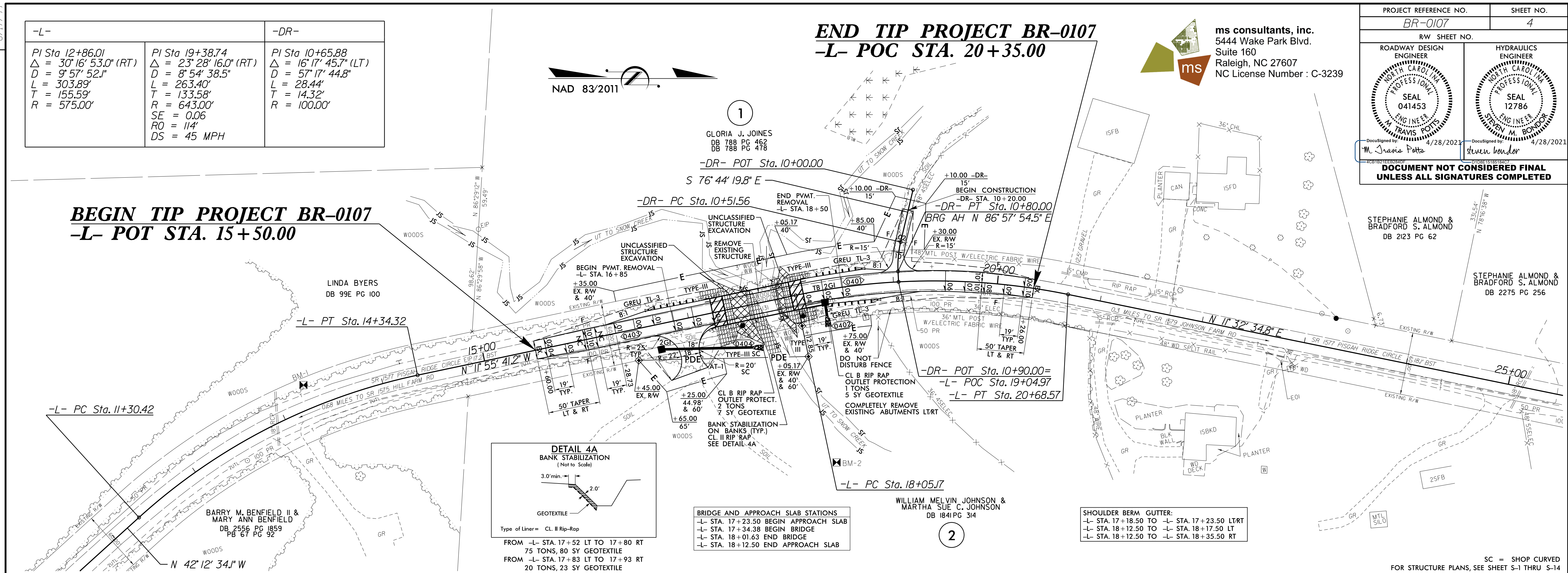
# END TIP PROJECT BR-0107 -L- POC STA. 20+35.00

**ms consultants, inc.**  
 5444 Wake Park Blvd.  
 Suite 160  
 Raleigh, NC 27607  
 NC License Number : C-3239

PROJECT REFERENCE NO. <b>BR-0107</b>	SHEET NO. <b>4</b>
ROADWAY DESIGN ENGINEER <b>SEAL 041453</b> M. Travis Potts	HYDRAULICS ENGINEER <b>SEAL 12786</b> Steven M. Bondok
DocuSigned by: M. Travis Potts 4/28/2021	DocuSigned by: Steven M. Bondok 4/28/2021

**DOCUMENT NOT CONSIDERED FINAL  
UNLESS ALL SIGNATURES COMPLETED**

## BEGIN TIP PROJECT BR-0107 -L- POT STA. 15+50.00



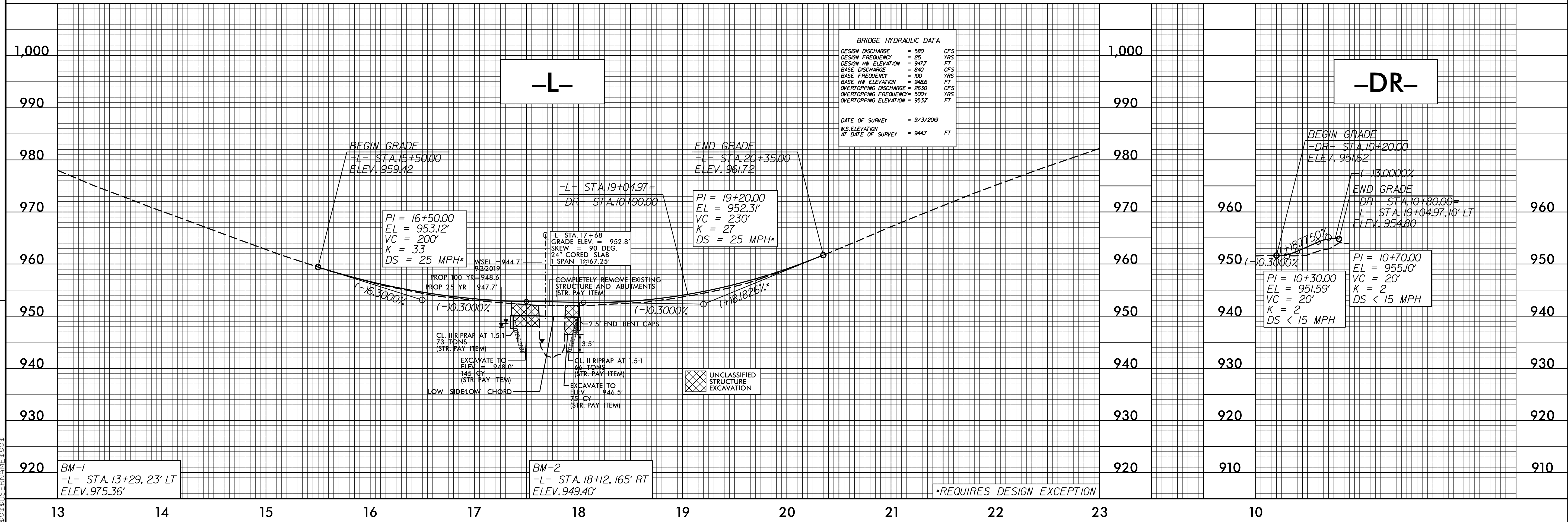
**BRIDGE AND APPROACH SLAB STATIONS**

- L- STA. 17+23.50 BEGIN APPROACH SLAB
- L- STA. 17+34.38 BEGIN BRIDGE
- L- STA. 18+01.63 END BRIDGE
- L- STA. 18+12.50 END APPROACH SLAB

**SHOULDER BERM GUTTER:**

- L- STA. 17+18.50 TO -L- STA. 17+23.50 LT/RT
- L- STA. 18+12.50 TO -L- STA. 18+17.50 LT
- L- STA. 18+12.50 TO -L- STA. 18+35.00 RT

SC = SHOP CURVED  
FOR STRUCTURE PLANS, SEE SHEET S-1 THRU S-14



REVISIONS

24-MAR-2021 16:51:03 BR-0107\_NCDOT\_IREDELL\_131\_DIVER\_UT\_SNOW\_CREEK\Roadway\Proc\BR-0107\_rdy\_psh.dgn