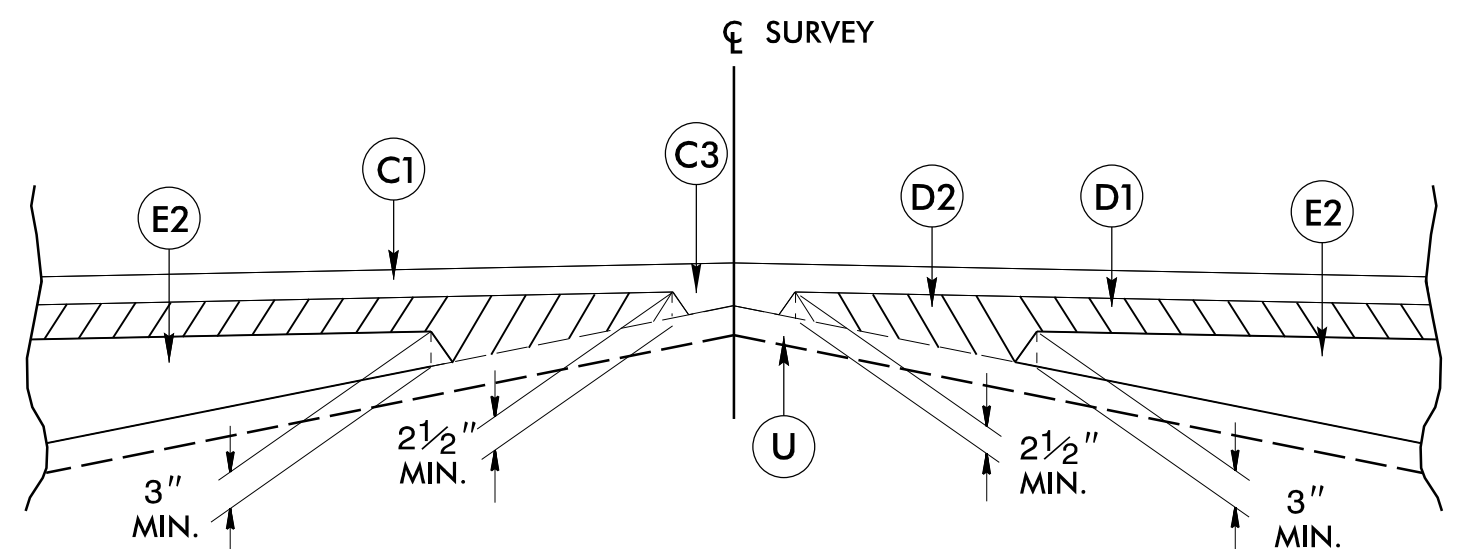


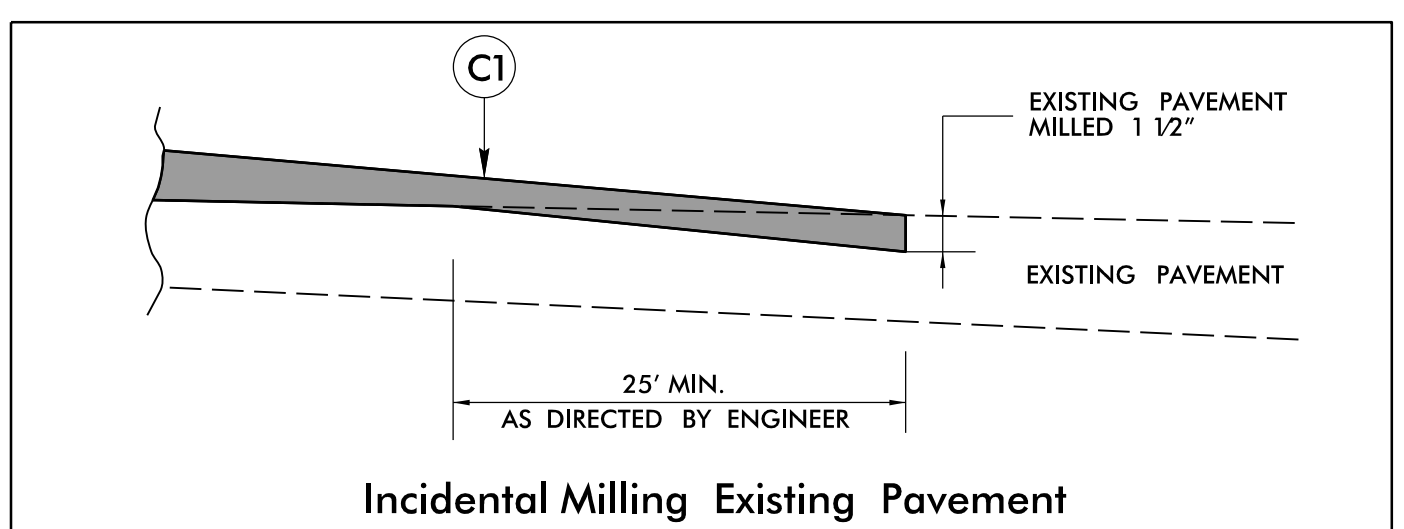
6/2/2019
 07-APR-2021 13:06
 K:\D01560\06-03 BR-0107 NCDOT IREDELL 131 OVER UT SNOW CREEK\Roadway\Pro\BR-0107_r.dwg_tup.dgn
 USER:NAME

PAVEMENT SCHEDULE	
FINAL PAVEMENT DESIGN: DECEMBER 6, 2019	
C1	PROP. APPROX. 1½" ASPHALT CONCRETE SURFACE COURSE, TYPE S9.5B, AT AN AVERAGE RATE OF 165 LBS. PER SQ. YD.
C2	PROP. APPROX. 3" ASPHALT CONCRETE SURFACE COURSE, TYPE S9.5B, AT AN AVERAGE RATE OF 165 LBS. PER SQ. YD. IN EACH OF TWO LAYERS
C3	PROP. VAR. DEPTH ASPHALT CONCRETE SURFACE COURSE, TYPE S9.5B, AT AN AVERAGE RATE OF 110 LBS. PER SQ. YD. PER 1" DEPTH. TO BE PLACED IN LAYERS NOT LESS THAN 1" OR GREATER THAN 1½" IN DEPTH
D1	PROP. APPROX. 4" ASPHALT CONCRETE INTERMEDIATE COURSE, TYPE I19.0C, AT AN AVERAGE RATE OF 456 LBS. PER SQ. YD.
D2	PROP. VAR. DEPTH ASPHALT CONCRETE INTERMEDIATE COURSE, TYPE I19.0C, AT AN AVERAGE RATE OF 114 LBS. PER SQ. YD. PER 1" DEPTH. TO BE PLACED IN LAYERS NOT LESS THAN 2½" OR GREATER THAN 4" IN DEPTH
E1	PROP. APPROX. 4" ASPHALT CONCRETE BASE COURSE, TYPE B25.0C, AT AN AVERAGE RATE OF 456 LBS. PER SQ. YD.
E2	PROP. VAR. DEPTH ASPHALT CONCRETE BASE COURSE, TYPE B25.0C, AT AN AVERAGE RATE OF 114 LBS. PER SQ. YD. PER 1" DEPTH. TO BE PLACED IN LAYERS NOT LESS THAN 3" OR GREATER THAN 5½" IN DEPTH
J	8" AGGREGATE BASE COURSE
P	PRIME COAT AT THE RATE OF 0.35 GAL/SY
R1	SHOULDER BERM GUTTER
T	EARTH MATERIAL
U	EXISTING PAVEMENT
W	VARIABLE DEPTH ASPHALT PAVEMENT (SEE DETAIL SHOWING METHOD OF WEDGING)

NOTE: PAVEMENT EDGE SLOPES ARE 1:1 UNLESS SHOWN OTHERWISE.



Detail Showing Method of Wedging

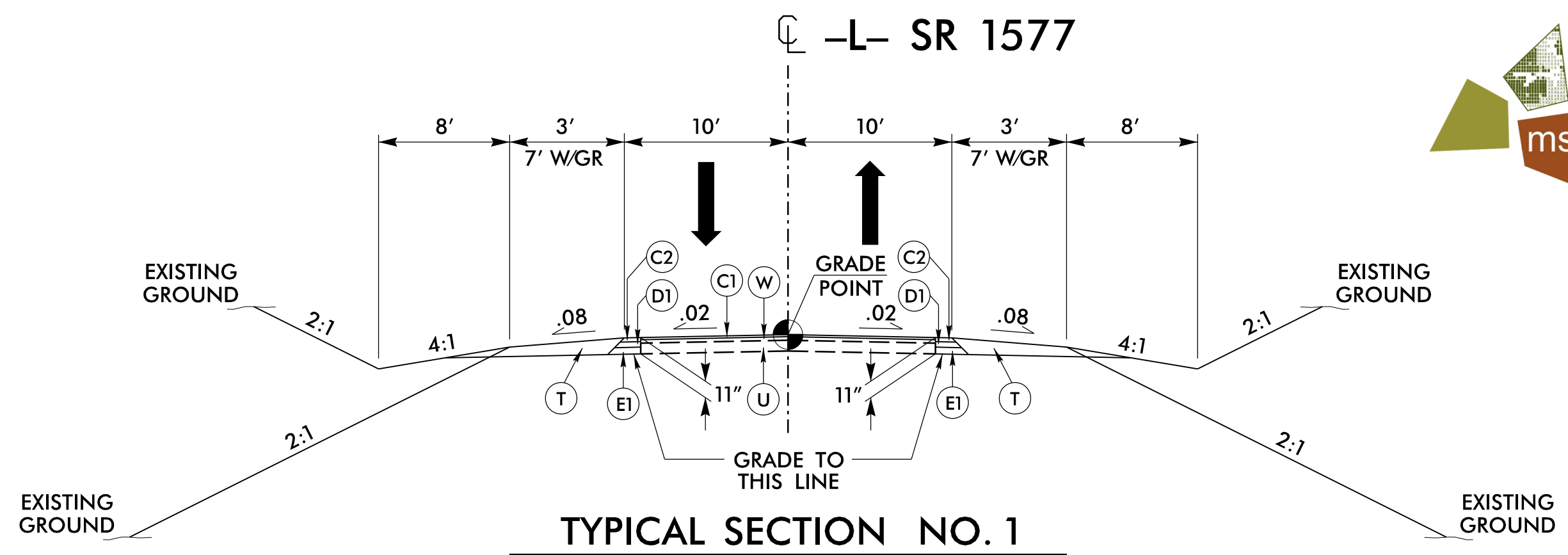


Incidental Milling Existing Pavement

ms consultants, inc.
 5444 Wake Park Blvd.
 Suite 160
 Raleigh, NC 27607
 NC License Number : C-3239

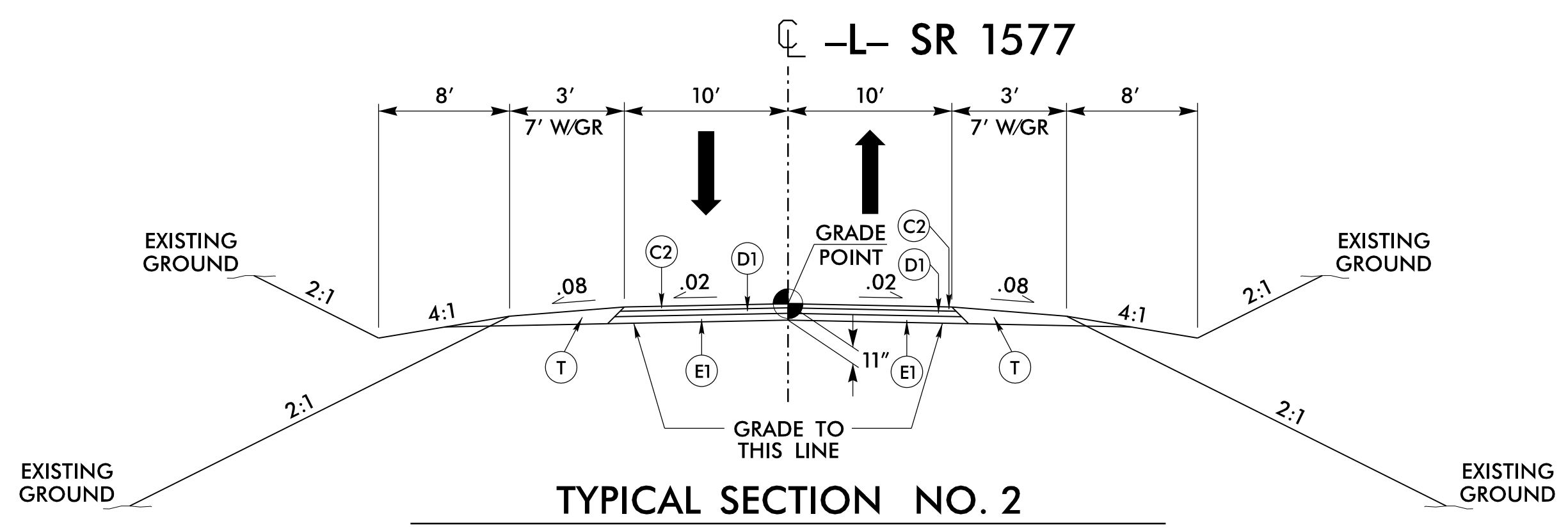
PROJECT REFERENCE NO. BR-0107	SHEET NO. 2A-1
ROADWAY DESIGN ENGINEER SEAL 041453 M. Travis Potts	PAVEMENT DESIGN ENGINEER SEAL 022896 Clark S. Morrison
DocuSigned by: M. Travis Potts 4/28/2021	DocuSigned by: Clark S. Morrison 4/28/2021

DOCUMENT NOT CONSIDERED FINAL UNLESS ALL SIGNATURES COMPLETED



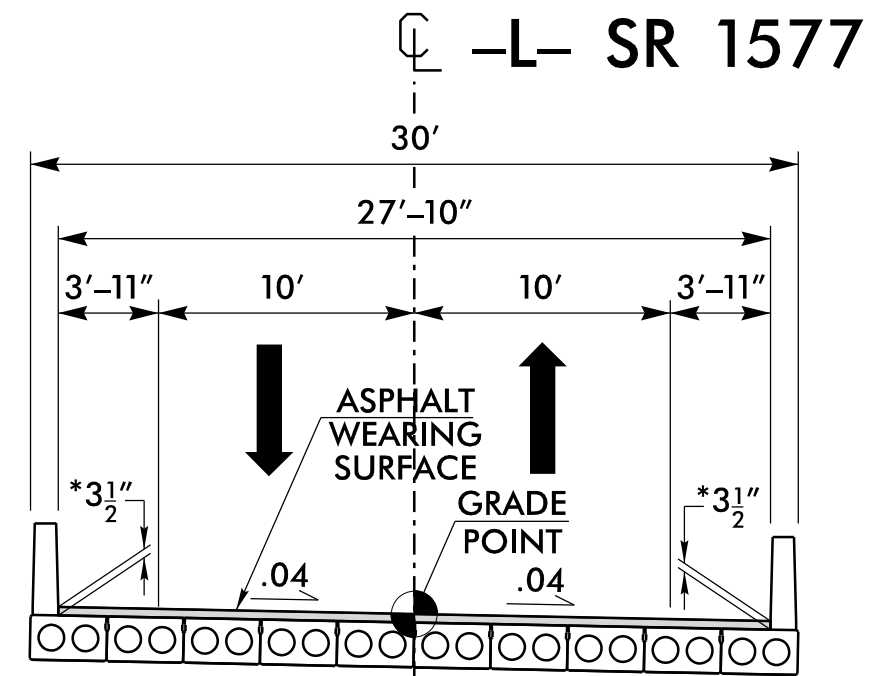
TYPICAL SECTION NO. 1

-L- STA. 15 + 50.00 TO -L- STA. 16 + 85.00
 -L- STA. 18 + 50.00 TO -L- STA. 20 + 35.00



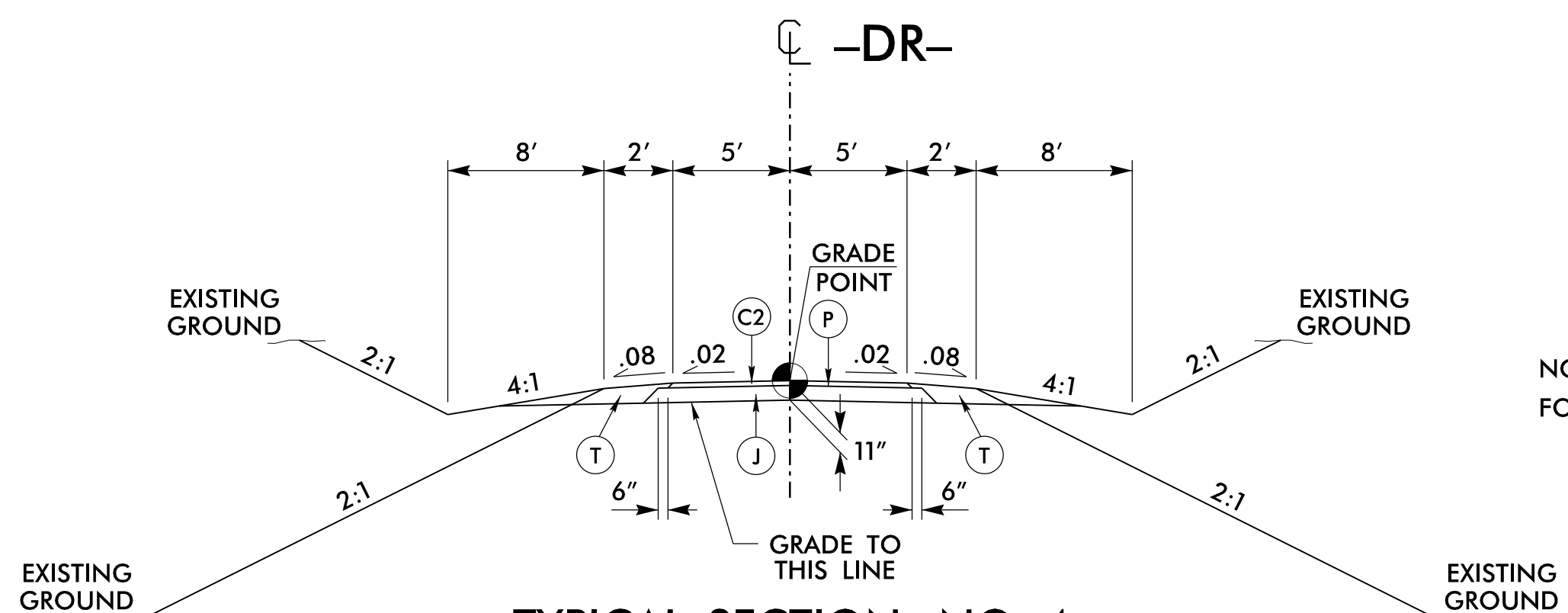
TYPICAL SECTION NO. 2

-L- STA. 16 + 85.00 TO -L- STA. 17 + 34.38 (BEGIN BRIDGE)
 -L- STA. 18 + 01.63 (END BRIDGE) TO -L- STA. 18 + 50.00



TYPICAL SECTION NO. 3

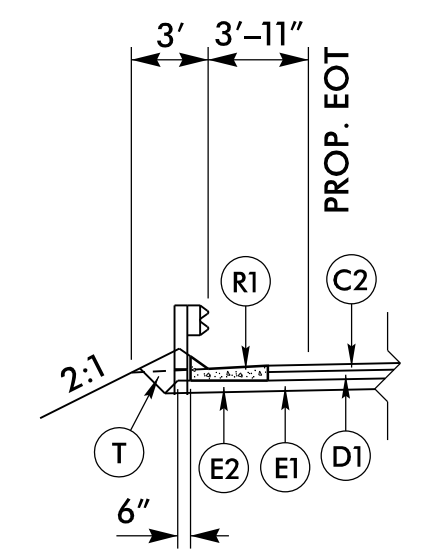
-L- STA. 17 + 34.38 (BEGIN BRIDGE) TO -L- STA. 18 + 01.63 (END BRIDGE)
 *DEPTH AT BEARING, SEE STRUCTURE PLANS FOR MORE INFORMATION



TYPICAL SECTION NO. 4

-DR- STA. 10 + 20.00 TO -DR- STA. 10 + 80.00
 DRIVEWAY TURNOUT AT STA. -L- 17 + 00 RT (SEE NOTE 1)

NOTE 1:
 FOR DRIVEWAY TURNOUT AT STA. -L- 17 + 00 RT
 USE TYPICAL SECTION NO. 4 UP TO R/W LINE
 PAVE WITH 8" ABC FROM R/W LINE TO END OF CONSTRUCTION
 PAVE TO EOP LIMITS AS SHOWN ON PLAN SHEET 4



SHOULDER BERM GUTTER DETAIL

-L- STA. 17 + 18.50 TO -L- STA. 17 + 23.50 LT & RT
 -L- STA. 18 + 12.50 TO -L- STA. 18 + 17.50 LT
 -L- STA. 18 + 12.50 TO -L- STA. 18 + 35.50 RT