

09/08/99

TIP PROJECT: I-5878

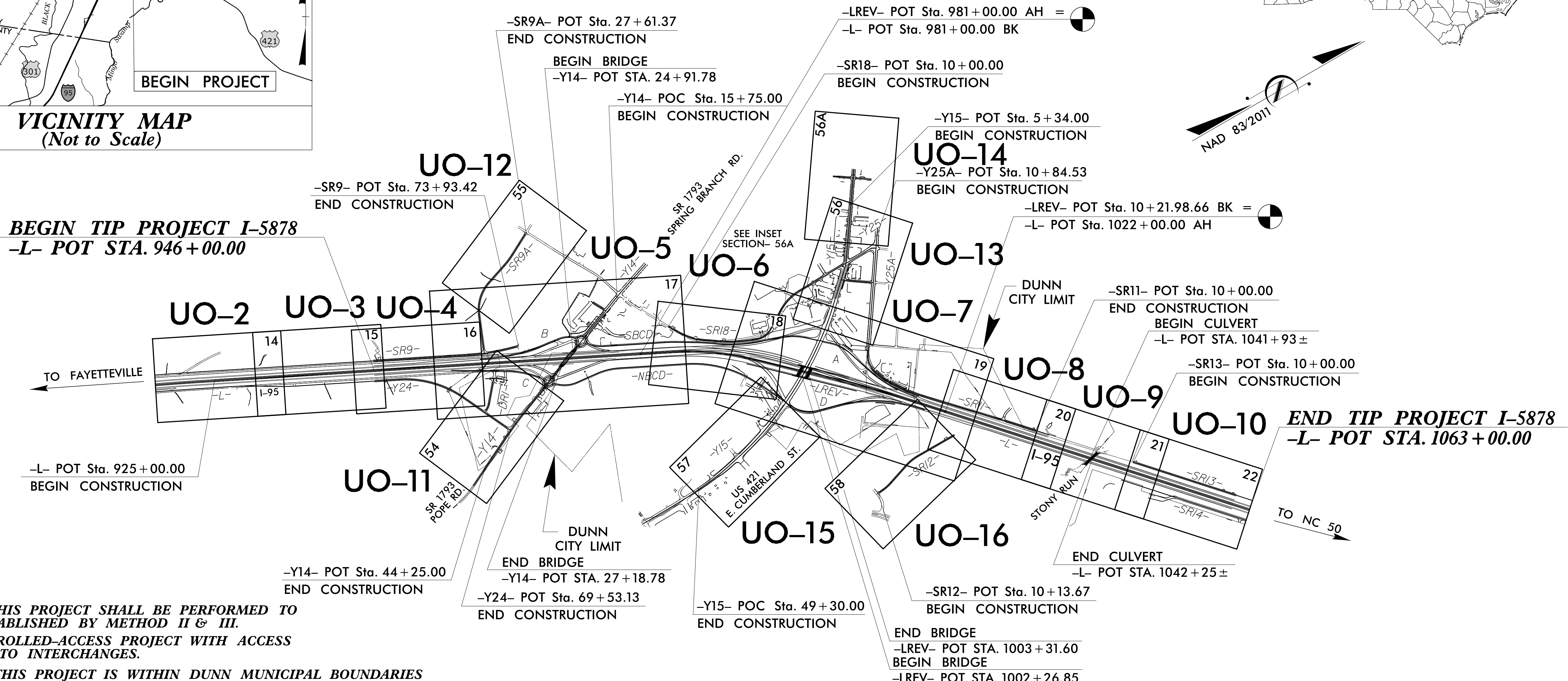
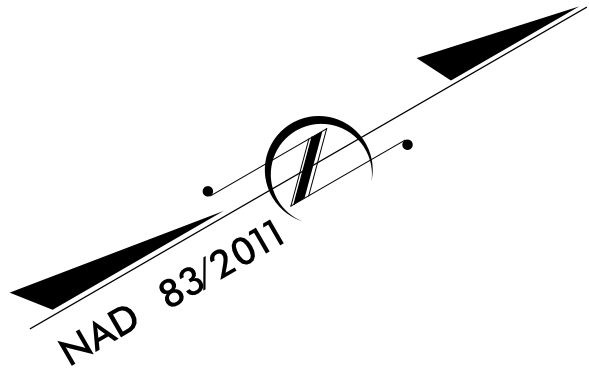
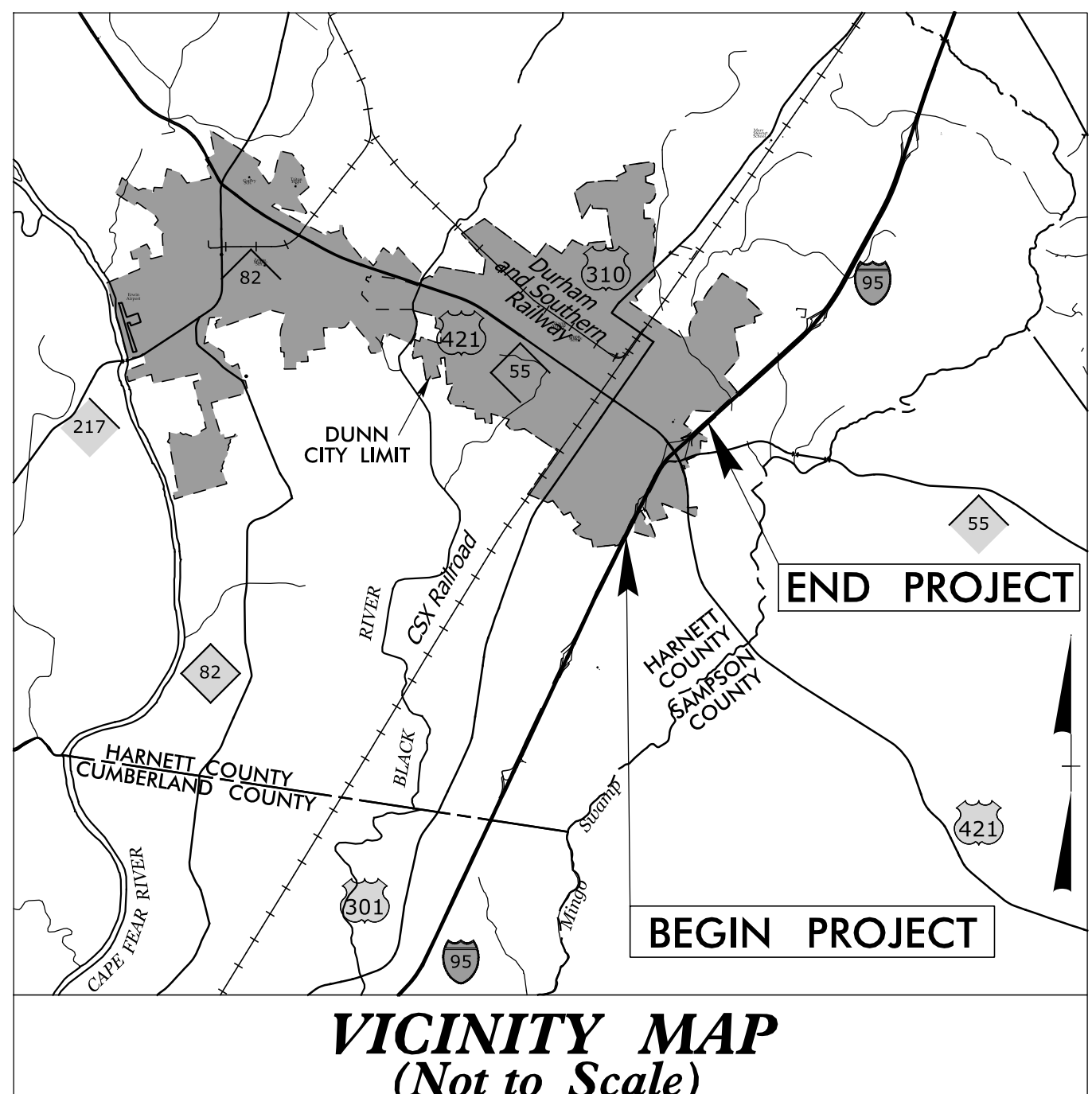
STATE OF NORTH CAROLINA
DIVISION OF HIGHWAYS

UTILITIES BY OTHERS PLANS
HARNETT COUNTY

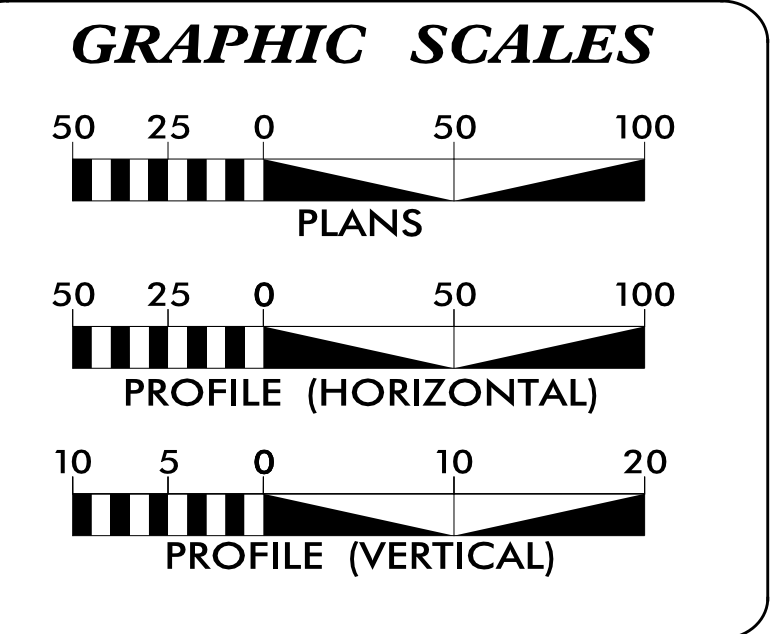
LOCATION: IMPROVE I-95 INTERCHANGES AND WIDEN TO EIGHT LANES SR 1793 (SPRING BRANCH ROAD /POPE ROAD) (EXIT 72) TO US 421 (EXIT 73)
TYPE OF WORK: POWER DISTRIBUTION, COMMUNICATIONS AND GAS DISTRIBUTION RELOCATIONS

T.I.P. NO.	SHEET NO.
I-5878	UO-1

NOTE:
ALL UTILITY WORK SHOWN ON THIS SHEET WILL BE DONE BY OTHERS. NO PAYMENT WILL BE MADE TO THE CONTRACTOR FOR UTILITY WORK SHOWN ON THIS SHEET.



CLEARING ON THIS PROJECT SHALL BE PERFORMED TO THE LIMITS ESTABLISHED BY METHOD II & III.
THIS IS A CONTROLLED-ACCESS PROJECT WITH ACCESS BEING LIMITED TO INTERCHANGES.
A PORTION OF THIS PROJECT IS WITHIN DUNN MUNICIPAL BOUNDARIES



SHEET NO.:	DESCRIPTION:
UO-1	TITLE SHEET
UO-2 THRU UO-16	UBO PLAN SHEETS

UTILITY OWNERS WITH CONFLICTS
(A) POWER DISTRIBUTION - DUKE ENERGY
(B) COMMUNICATIONS - CENTURYLINK
(C) COMMUNICATIONS - CONERRA
(D) COMMUNICATIONS - SPECTRUM
(E) GAS DISTRIBUTION - PNG
(F) GAS TRANSMISSION - PNG

PREPARED IN THE OFFICE OF:
Michael Baker
INTERNATIONAL
Michael Baker Engineering, Inc.
8000 Regency Parkway, Suite 600
Cary, NC 27518
919-463-5488

Brandy Creech	PROJECT UTILITY COORDINATOR
Christina Newsome	PROJECT UTILITY TECHNICIAN
Susan Lancaster, P.E.	PROJECT ENGINEER

DIVISION OF HIGHWAYS
DIV. 6 UTILITIES UNIT
431 TRANSPORTATION DRIVE
FAYETTEVILLE NC 28301
PHONE (910) 364-0603

Steven Kendall, P.E.	DIV. PROJECT DEVELOPMENT ENGINEER
Rick Handlin	NC DOT DIV. 6 UTILITY ENGINEER

11-MAR-2021 14:47
R:\Utilities\I-5878\ut_fsh\UO1_psh.dgn
BCreech AT CARY\BCREECH

I-5877 UTILITY BY OTHERS SHEET NO. U0-10

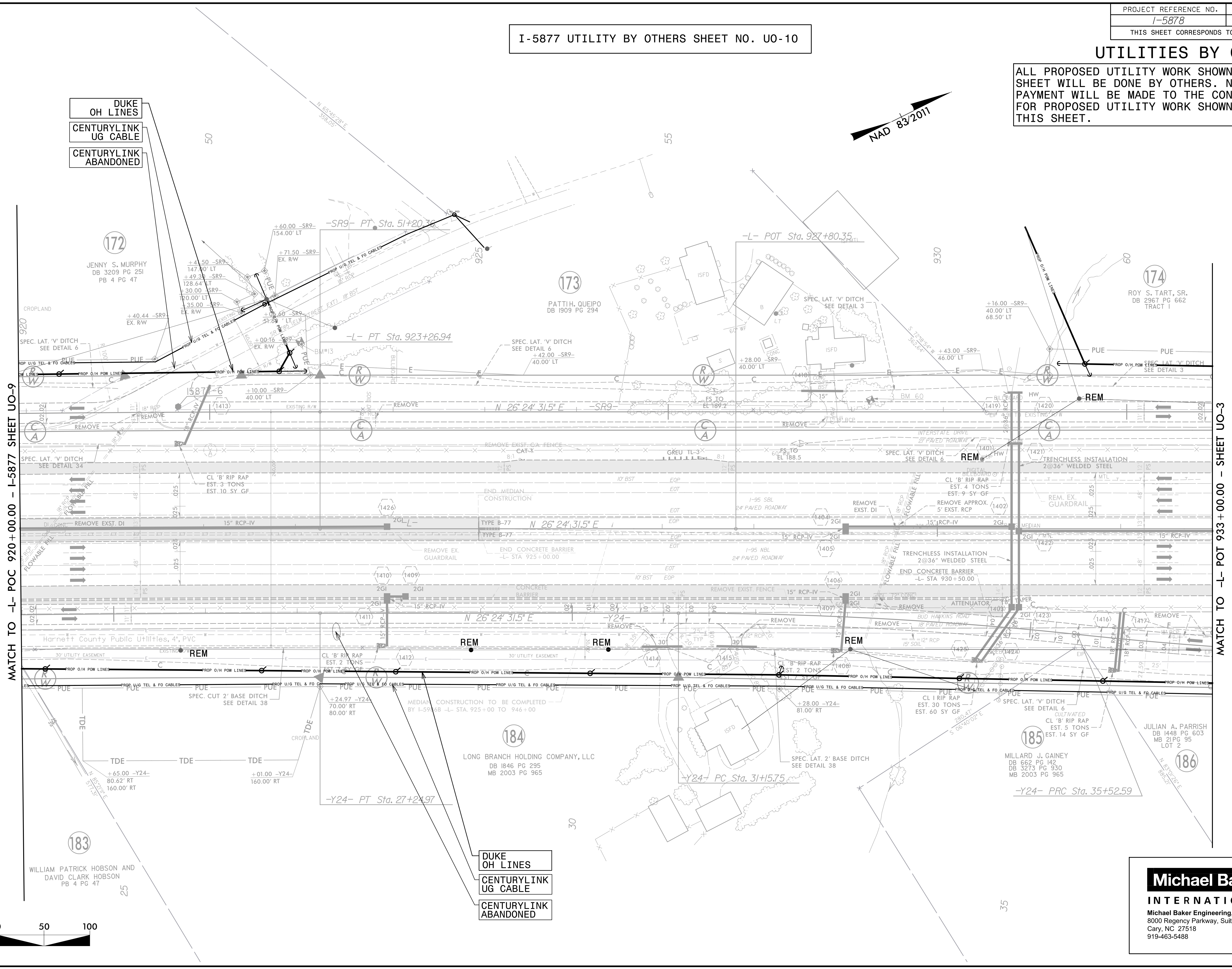
UTILITIES BY OTHERS

ALL PROPOSED UTILITY WORK SHOWN ON THIS SHEET WILL BE DONE BY OTHERS. NO PAYMENT WILL BE MADE TO THE CONTRACTOR FOR PROPOSED UTILITY WORK SHOWN ON THIS SHEET.



DUKE
OH LINES
CENTURYLINK
UG CABLE
CENTURYLINK
ABANDONED

DUKE
OH LINES
CENTURYLINK
UG CABLE
CENTURYLINK
ABANDONED



MATCH TO -L- POC 920+00.00 - I-5877 SHEET U0-9

MATCH TO -L- POT 933+00.00 - SHEET U0-3

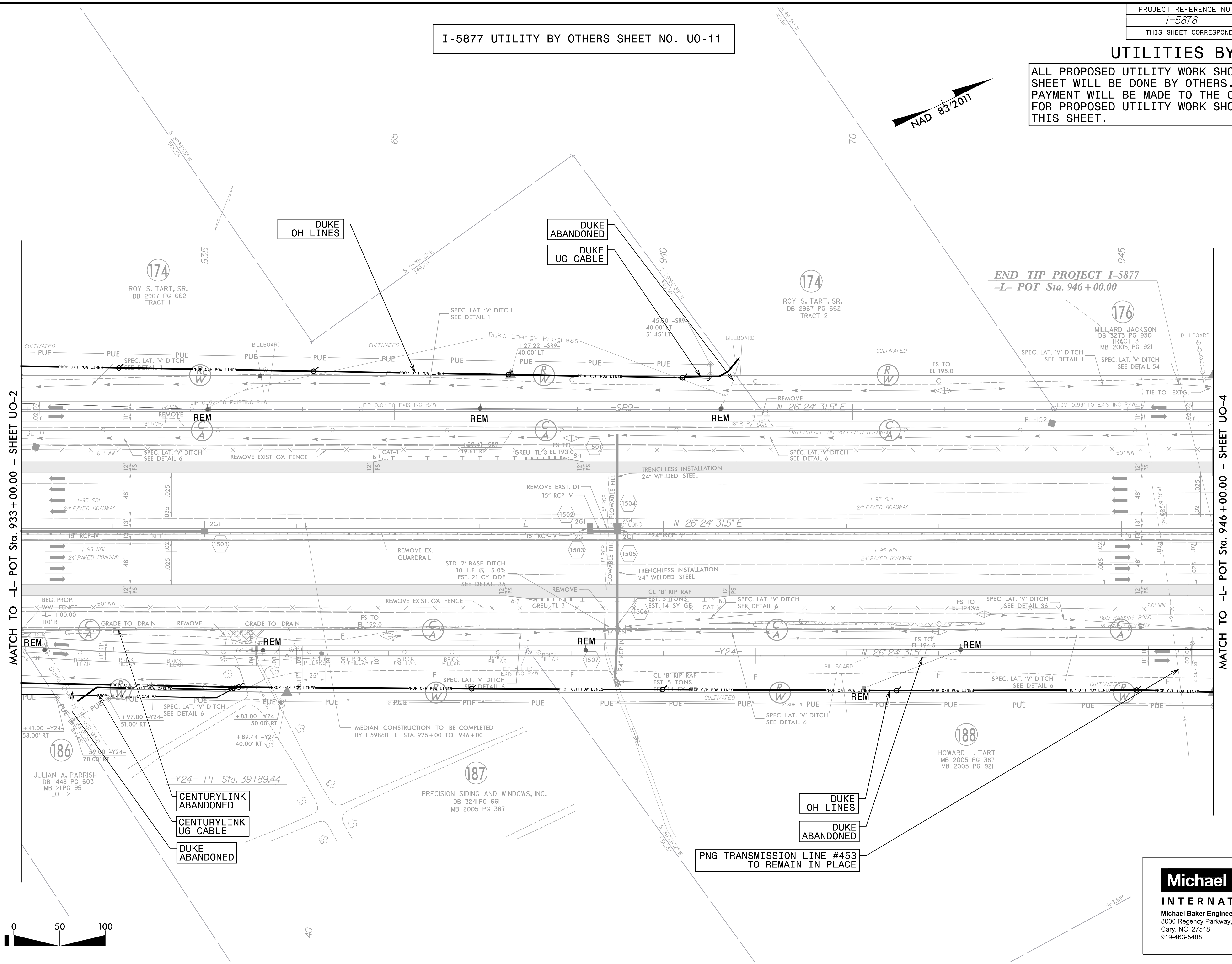
3/1/2021 2:47:56 PM R:\SCH\14-002-ps-h.dgn

Michael Baker
INTERNATIONAL
Michael Baker Engineering, Inc.
8000 Regency Parkway, Suite 600
Cary, NC 27518
919-463-5488

I-5877 UTILITY BY OTHERS SHEET NO. U0-11

UTILITIES BY OTHERS

ALL PROPOSED UTILITY WORK SHOWN ON THIS SHEET WILL BE DONE BY OTHERS. NO PAYMENT WILL BE MADE TO THE CONTRACTOR FOR PROPOSED UTILITY WORK SHOWN ON THIS SHEET.



REVISIONS

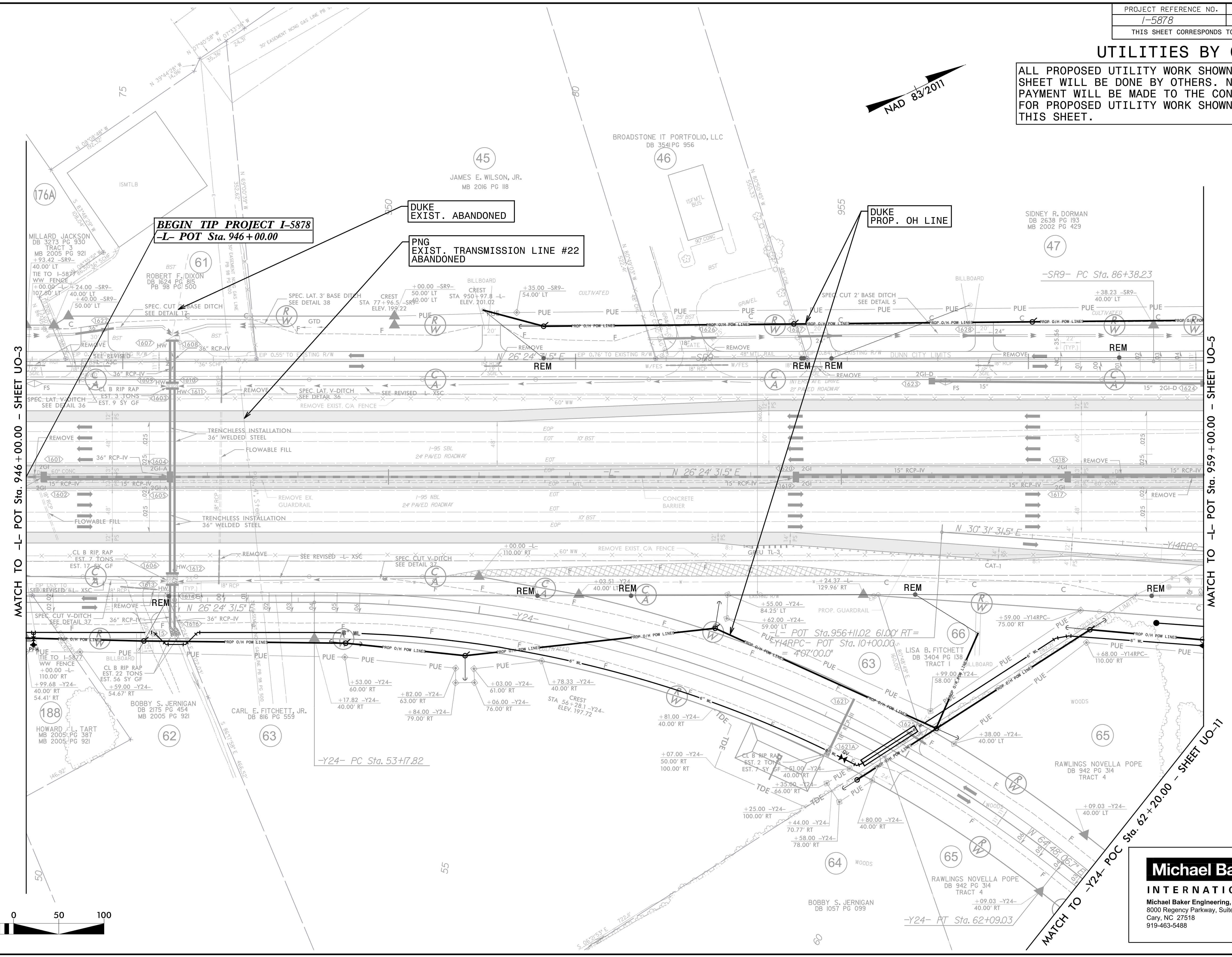


5/14/99
 3/17/2021 2:47:32 PM
 R:\PROJECTS\2021\I-5877\B.U.L.-rdj\15_U03_psh.dgn
 R:\PROJECTS\2021\I-5877\B.U.L.-rdj\15_U03_psh.dgn

Michael Baker
INTERNATIONAL
 Michael Baker Engineering, Inc.
 8000 Regency Parkway, Suite 600
 Cary, NC 27518
 919-463-5488

UTILITIES BY OTHERS

ALL PROPOSED UTILITY WORK SHOWN ON THIS SHEET WILL BE DONE BY OTHERS. NO PAYMENT WILL BE MADE TO THE CONTRACTOR FOR PROPOSED UTILITY WORK SHOWN ON THIS SHEET.



MATCH TO -L- POT Sta. 946 + 00.00 - SHEET UO-3

MATCH TO -L- POT Sta. 959 + 00.00 - SHEET UO-5

MATCH TO -Y24- POC Sta. 62 + 20.00 - SHEET UO-11

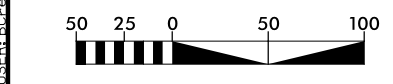
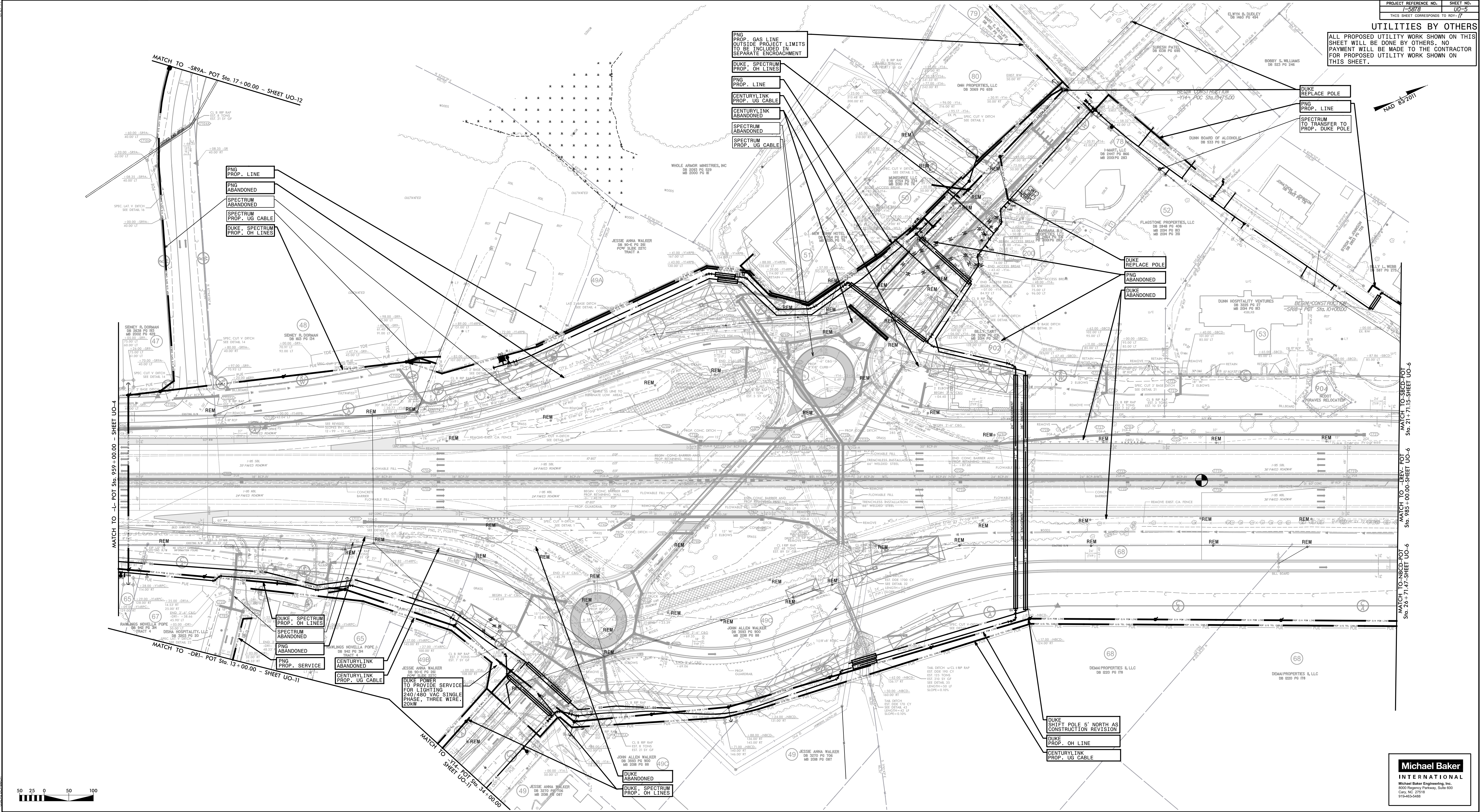


Michael Baker
INTERNATIONAL
 Michael Baker Engineering, Inc.
 8000 Regency Parkway, Suite 600
 Cary, NC 27518
 919-463-5488

5/14/99
 6/24/2021 13:21:17 PM
 R:\GIS\16-004\16-004-ps-h.dgn

PROJECT REFERENCE NO. **5878** SHEET NO. **00-5**
 THIS SHEET CORRESPONDS TO RDT-17

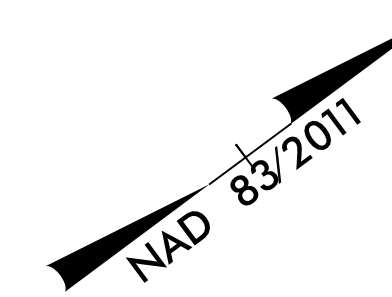
UTILITIES BY OTHERS
 ALL PROPOSED UTILITY WORK SHOWN ON THIS SHEET WILL BE DONE BY OTHERS. NO PAYMENT WILL BE MADE TO THE CONTRACTOR FOR PROPOSED UTILITY WORK SHOWN ON THIS SHEET.



Michael Baker
INTERNATIONAL
 Michael Baker Engineering, Inc.
 8000 Regency Parkway, Suite 600
 Cary, NC 27513
 919-463-5488

UTILITIES BY OTHERS

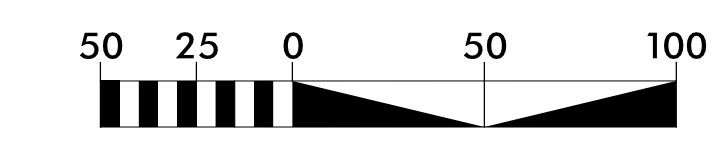
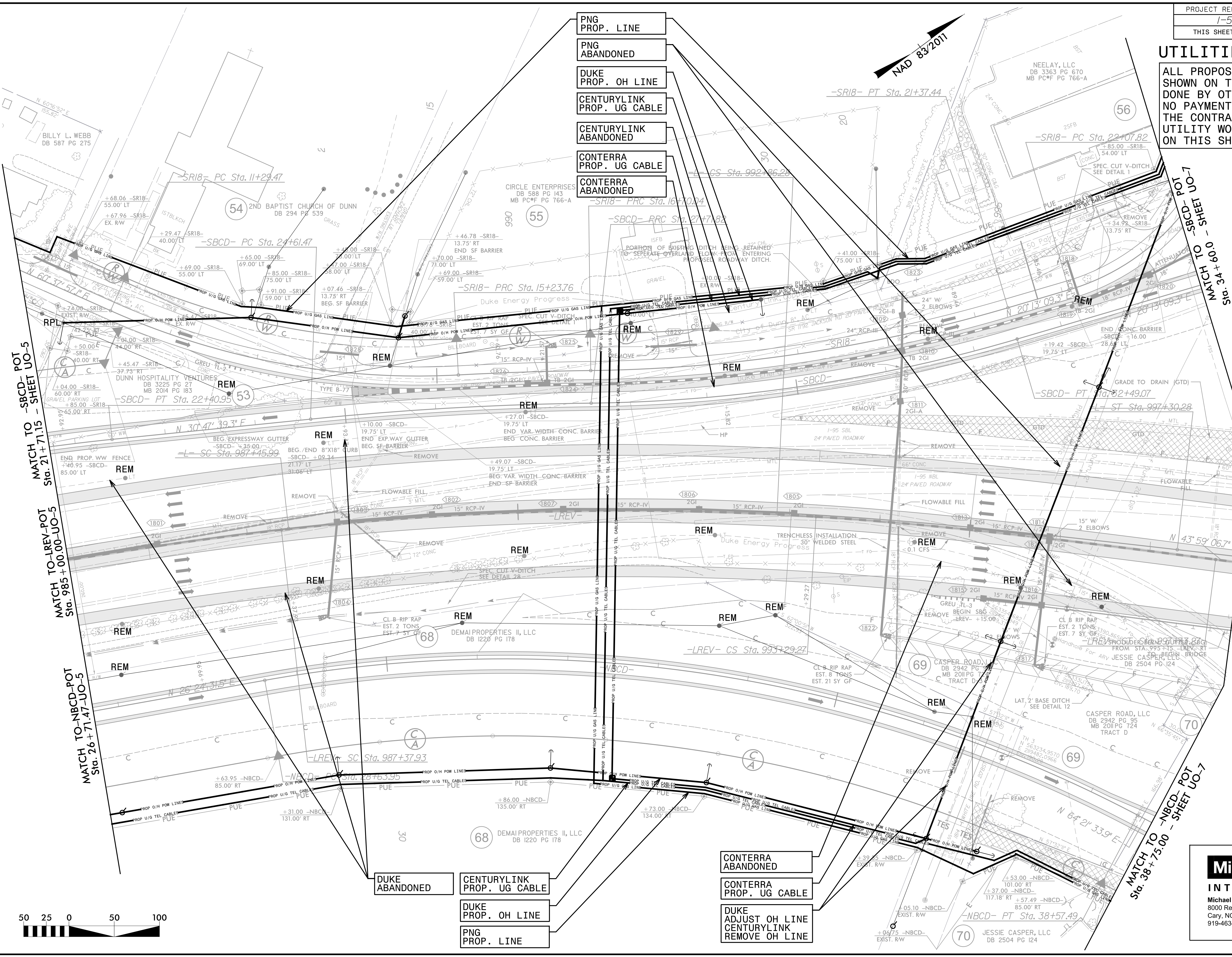
ALL PROPOSED UTILITY WORK SHOWN ON THIS SHEET WILL BE DONE BY OTHERS. NO PAYMENT WILL BE MADE TO THE CONTRACTOR FOR PROPOSED UTILITY WORK SHOWN ON THIS SHEET.



- PNG PROP. LINE
- PNG ABANDONED
- DUKE PROP. OH LINE
- CENTURYLINK PROP. UG CABLE
- CENTURYLINK ABANDONED
- CONTERRA PROP. UG CABLE
- CONTERRA ABANDONED

- DUKE ABANDONED
- CENTURYLINK PROP. UG CABLE
- DUKE PROP. OH LINE
- PNG PROP. LINE

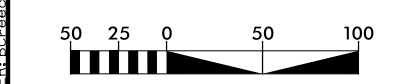
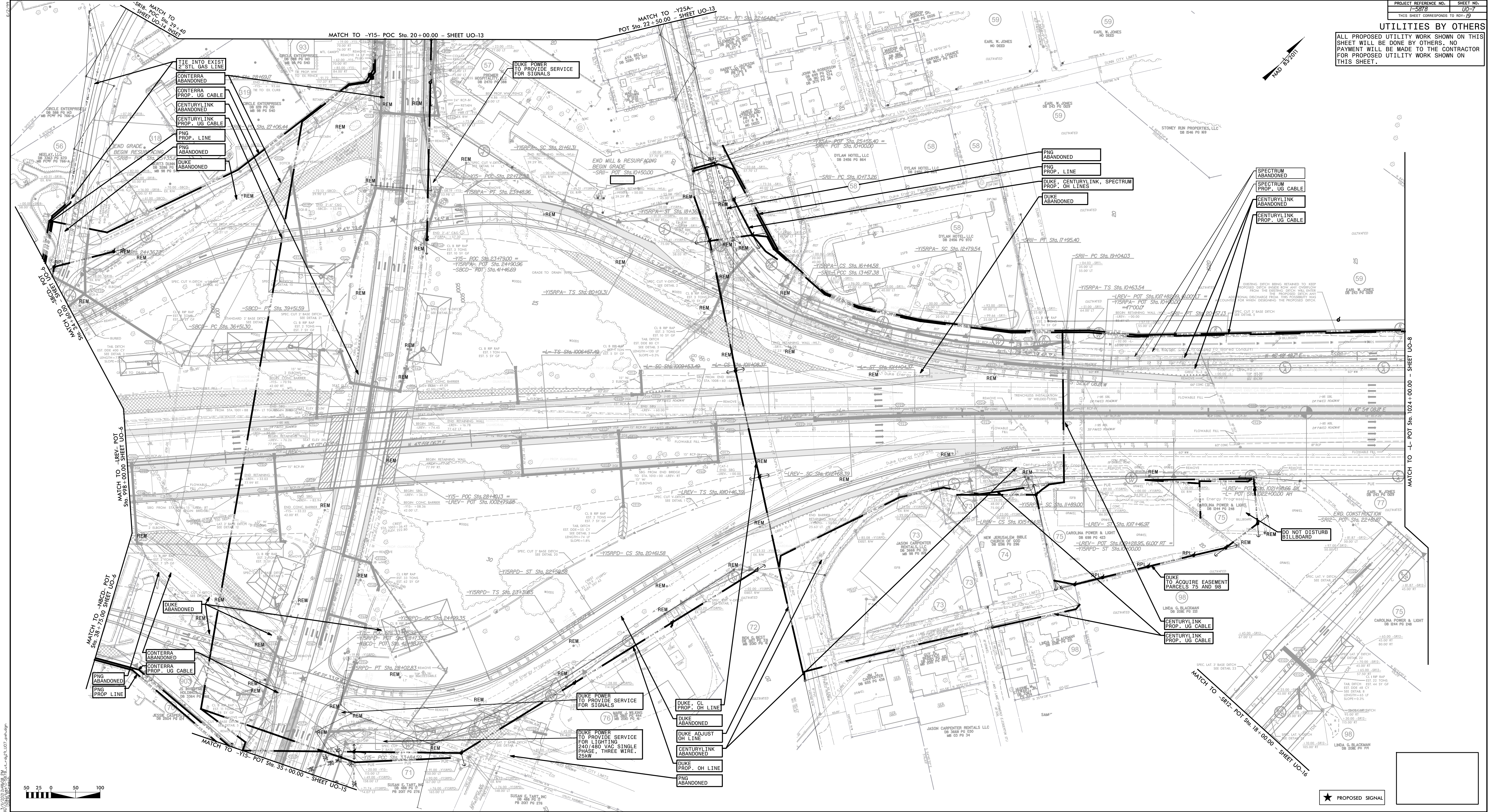
- CONTERRA ABANDONED
- CONTERRA PROP. UG CABLE
- DUKE ADJUST OH LINE
- CENTURYLINK REMOVE OH LINE



Michael Baker INTERNATIONAL
 Michael Baker Engineering, Inc.
 8000 Regency Parkway, Suite 600
 Cary, NC 27518
 919-463-5488

5/14/99
 3/1/2021 2:41:53 PM
 rd_y18_18_06_u06.dgn
 rd_y18_18_06_u06.dwg

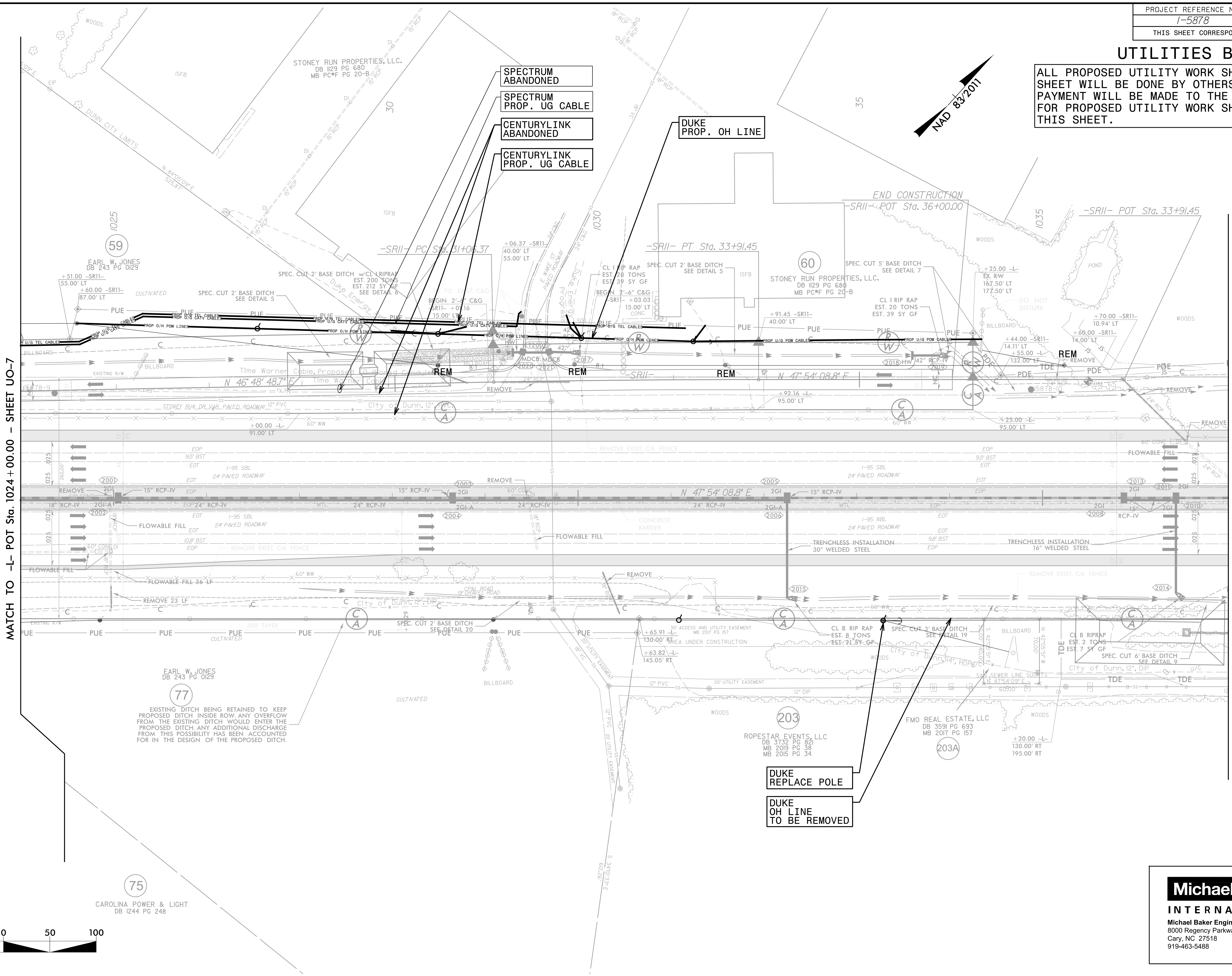
UTILITIES BY OTHERS
 ALL PROPOSED UTILITY WORK SHOWN ON THIS SHEET WILL BE DONE BY OTHERS. NO PAYMENT WILL BE MADE TO THE CONTRACTOR FOR PROPOSED UTILITY WORK SHOWN ON THIS SHEET.



★ PROPOSED SIGNAL

UTILITIES BY OTHERS

ALL PROPOSED UTILITY WORK SHOWN ON THIS SHEET WILL BE DONE BY OTHERS. NO PAYMENT WILL BE MADE TO THE CONTRACTOR FOR PROPOSED UTILITY WORK SHOWN ON THIS SHEET.



MATCH TO -L- POT Sta. 1024 + 00.00 - SHEET UO-7

MATCH TO -L- POT Sta. 1037 + 00.00 - SHEET UO-9



EXISTING DITCH BEING RETAINED TO KEEP PROPOSED DITCH INSIDE ROW. ANY OVERFLOW FROM THE EXISTING DITCH WOULD ENTER THE PROPOSED DITCH. ANY ADDITIONAL DISCHARGE FROM THIS POSSIBILITY HAS BEEN ACCOUNTED FOR IN THE DESIGN OF THE PROPOSED DITCH.

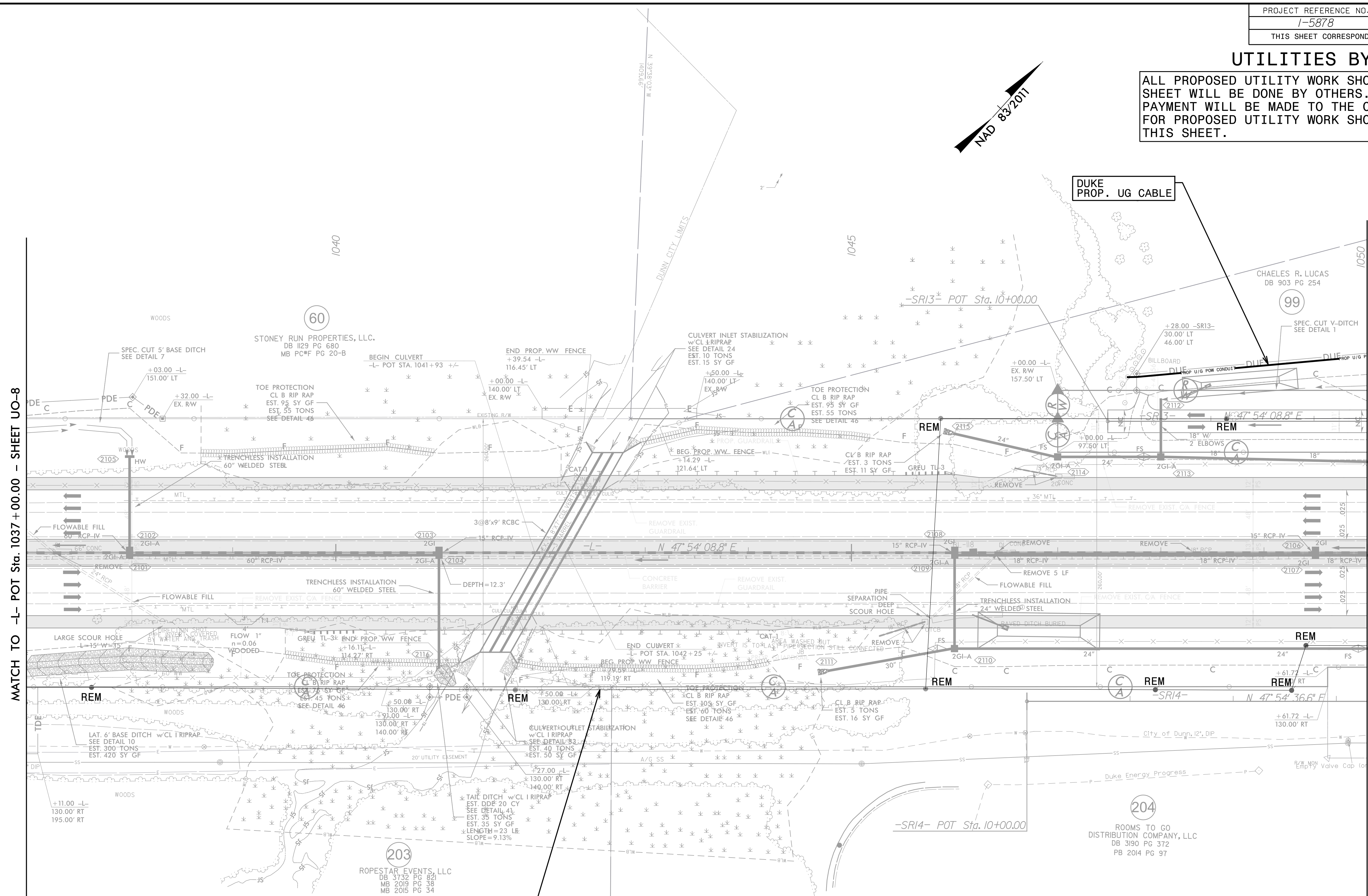
DUKE REPLACE POLE
DUKE OH LINE TO BE REMOVED

Michael Baker INTERNATIONAL
 Michael Baker Engineering, Inc.
 8000 Regency Parkway, Suite 600
 Cary, NC 27518
 919-463-5488

5/14/99
3/1/2021 2:48:57 PM
R:\NORTH\RDY\20\1-5878\1-5878.dwg
R:\NORTH\RDY\20\1-5878\1-5878.dwg

UTILITIES BY OTHERS

ALL PROPOSED UTILITY WORK SHOWN ON THIS SHEET WILL BE DONE BY OTHERS. NO PAYMENT WILL BE MADE TO THE CONTRACTOR FOR PROPOSED UTILITY WORK SHOWN ON THIS SHEET.



MATCH TO -L- POT Sta. 1037+00.00 - SHEET UO-8

MATCH TO -L- POT Sta. 1050+00.00 - SHEET UO-10



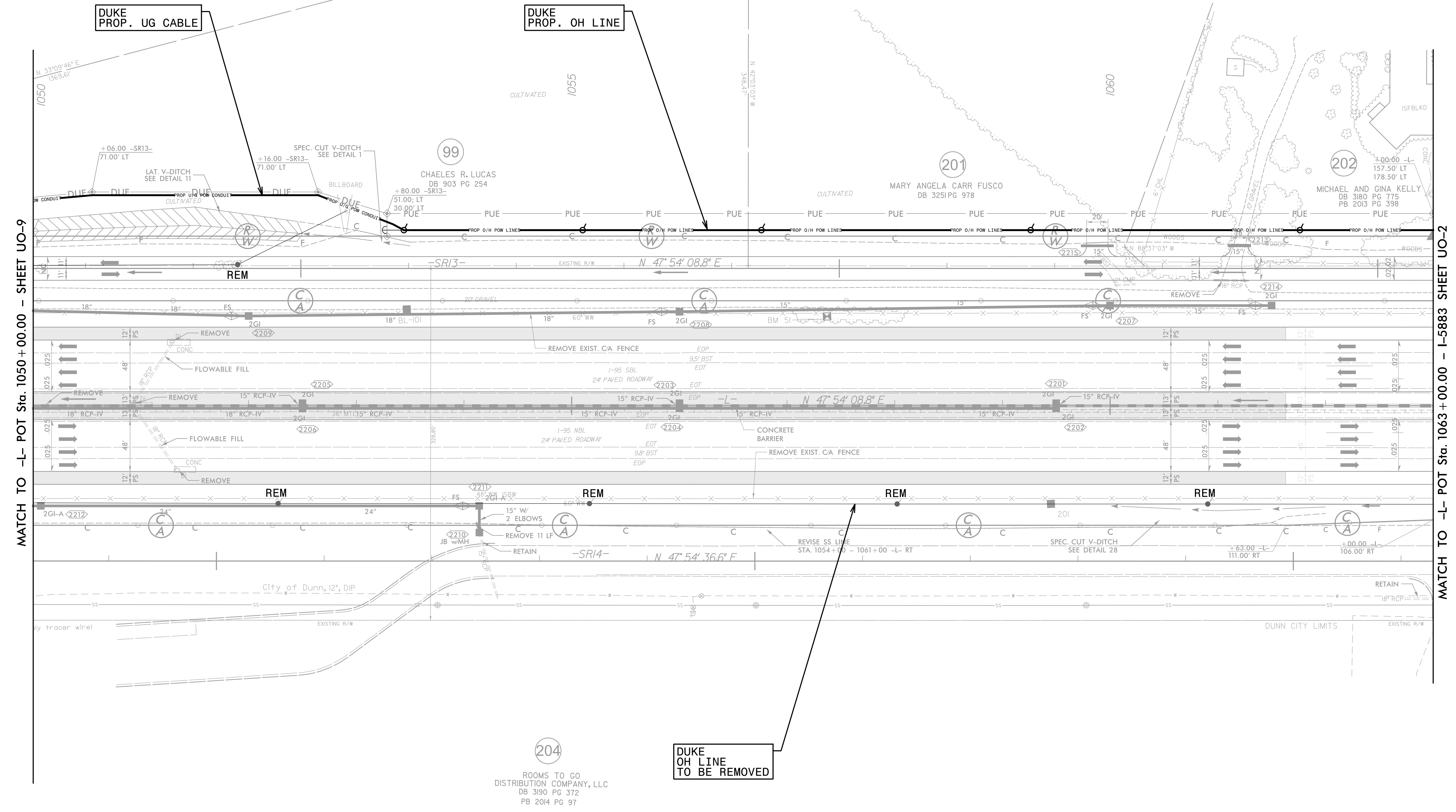
**DUKE
OH LINE
TO BE REMOVED**

Michael Baker
INTERNATIONAL
Michael Baker Engineering, Inc.
8000 Regency Parkway, Suite 600
Cary, NC 27518
919-463-5488

5/14/99
3/17/2021 2:48:33 PM
rs:\GIS\11000\11000-078-ut-r-dj21-U09-ps-h.dgn

UTILITIES BY OTHERS

ALL PROPOSED UTILITY WORK SHOWN ON THIS SHEET WILL BE DONE BY OTHERS. NO PAYMENT WILL BE MADE TO THE CONTRACTOR FOR PROPOSED UTILITY WORK SHOWN ON THIS SHEET.



MATCH TO -L- POT Sta. 1050+00.00 - SHEET UO-9

MATCH TO -L- POT Sta. 1063+00.00 - I-5883 SHEET UO-2



ROOMS TO GO
DISTRIBUTION COMPANY, LLC
DB 3190 PG 372
PB 2014 PG 97

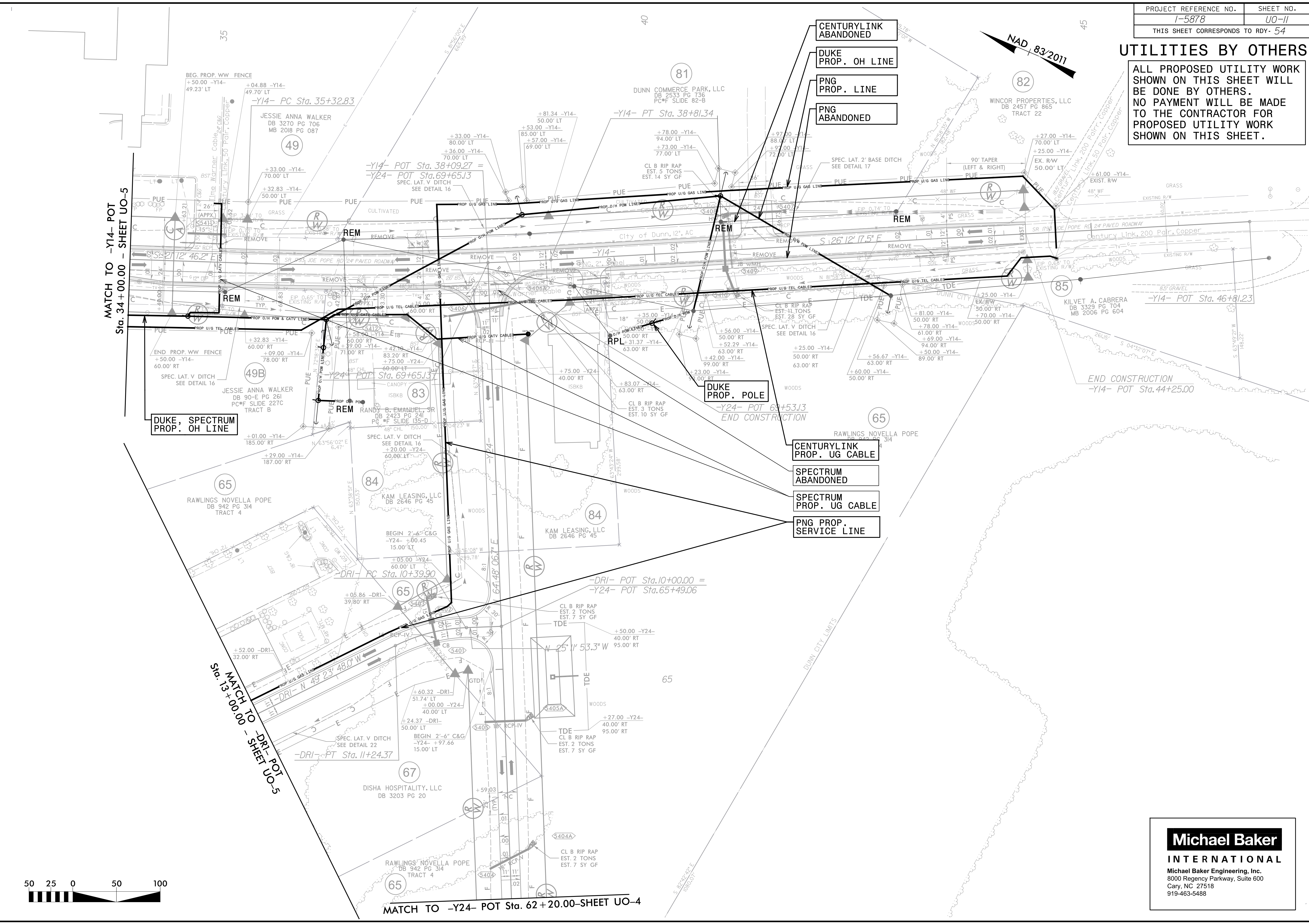
Michael Baker
INTERNATIONAL
Michael Baker Engineering, Inc.
8000 Regency Parkway, Suite 600
Cary, NC 27518
919-463-5488

5/14/99

3/17/2021 2:48:55 PM
R:\U001\15878\RDY\22\U010\psh.dgn

UTILITIES BY OTHERS

ALL PROPOSED UTILITY WORK SHOWN ON THIS SHEET WILL BE DONE BY OTHERS. NO PAYMENT WILL BE MADE TO THE CONTRACTOR FOR PROPOSED UTILITY WORK SHOWN ON THIS SHEET.



5/14/99
3/17/2021 2:48:45 PM
R:\US\115151\115151.dgn

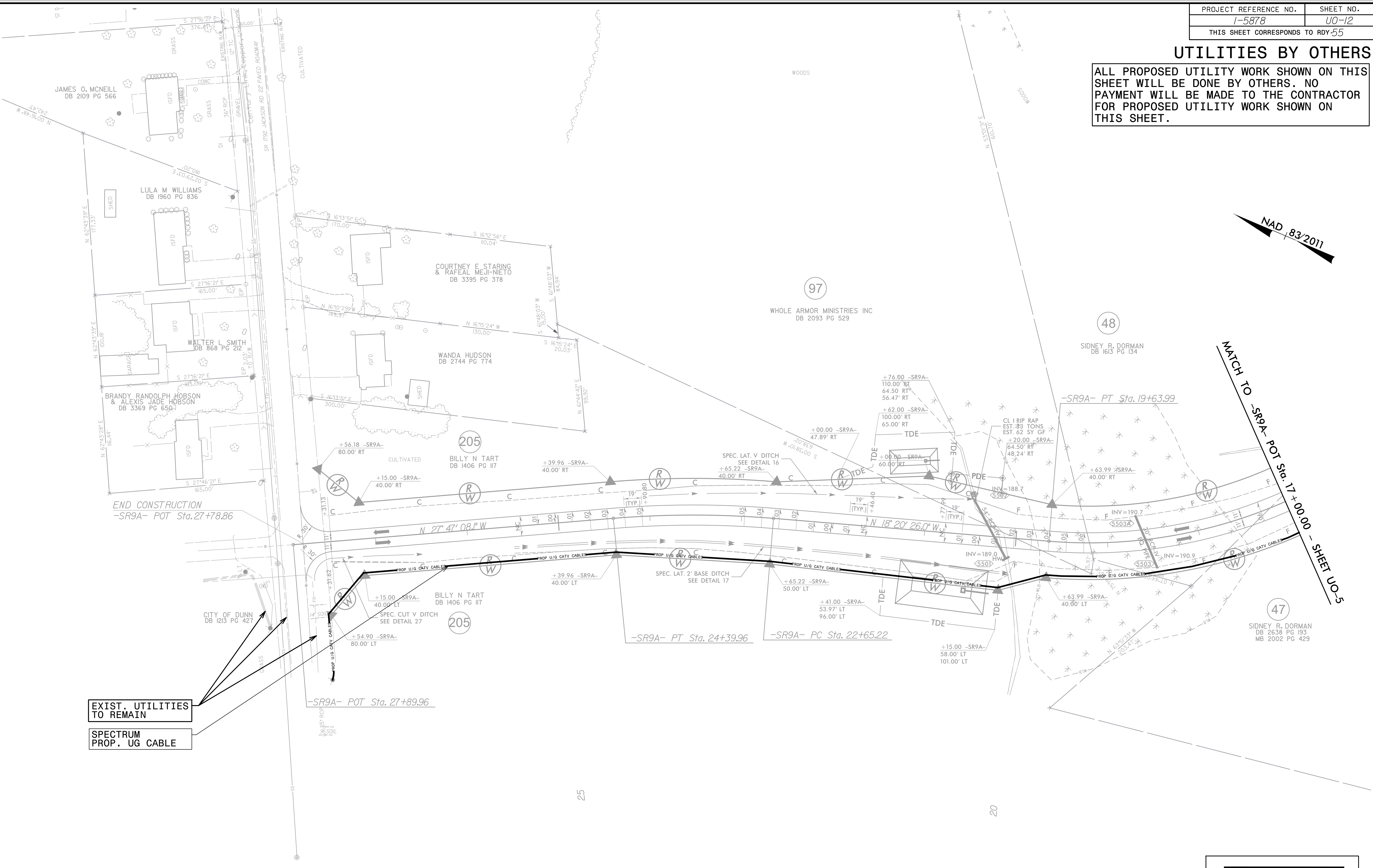
Michael Baker
INTERNATIONAL
Michael Baker Engineering, Inc.
8000 Regency Parkway, Suite 600
Cary, NC 27518
919-463-5488

UTILITIES BY OTHERS

ALL PROPOSED UTILITY WORK SHOWN ON THIS SHEET WILL BE DONE BY OTHERS. NO PAYMENT WILL BE MADE TO THE CONTRACTOR FOR PROPOSED UTILITY WORK SHOWN ON THIS SHEET.



MATCH TO -SR9A- POT Sta. 17+00.00 - SHEET U0-5



EXIST. UTILITIES TO REMAIN
SPECTRUM PROP. UG CABLE

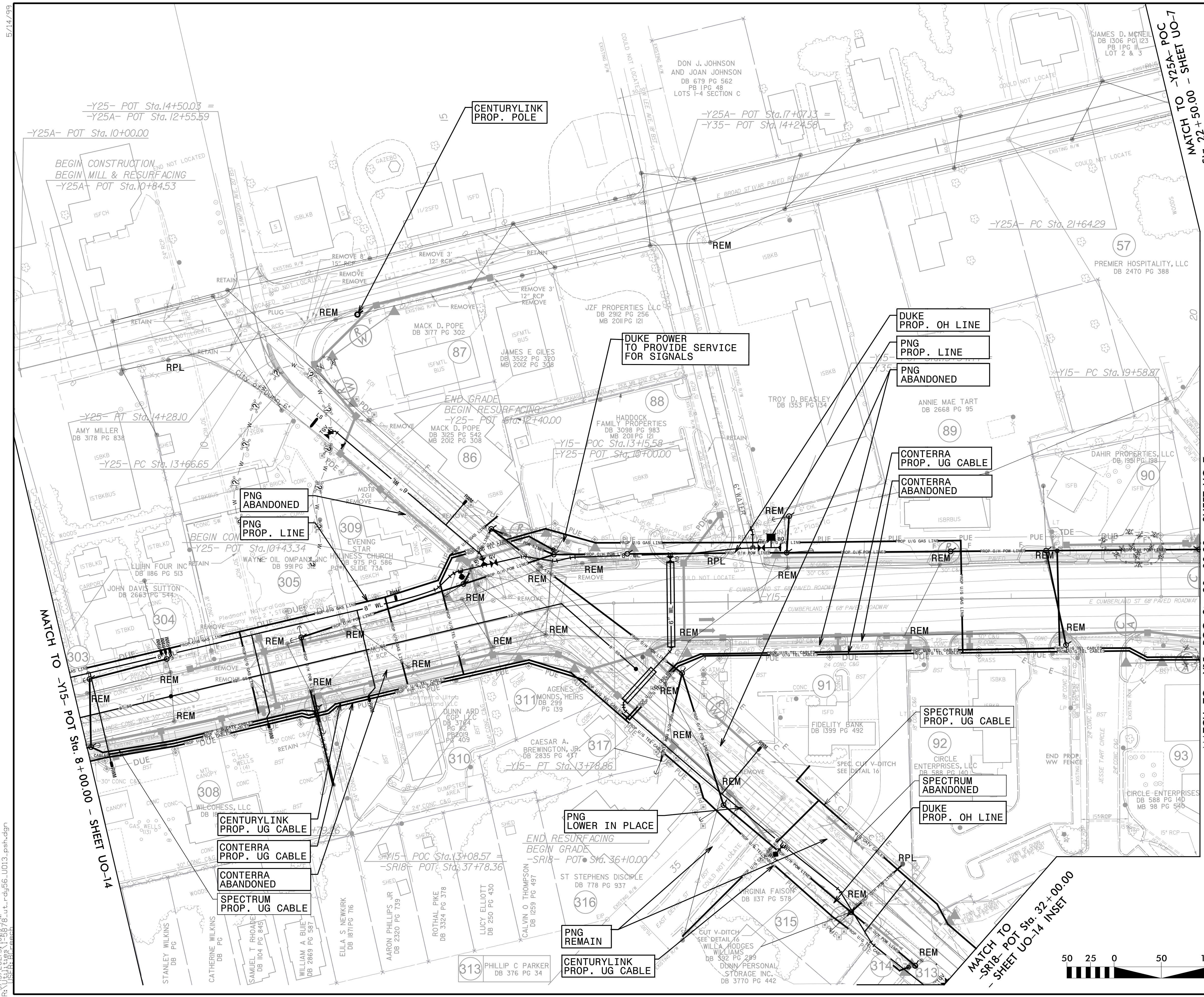
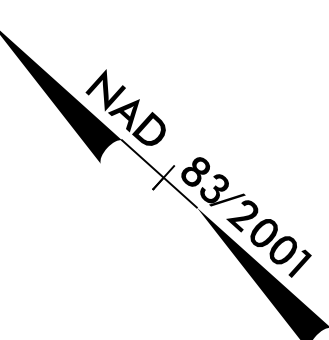


Michael Baker
INTERNATIONAL
Michael Baker Engineering, Inc.
8000 Regency Parkway, Suite 600
Cary, NC 27518
919-463-5488

R:\11/2021\214815\DWG\11-15-21\11-15-21-012-ps.sh.dgn

UTILITIES BY OTHERS

ALL PROPOSED UTILITY WORK SHOWN ON THIS SHEET WILL BE DONE BY OTHERS. NO PAYMENT WILL BE MADE TO THE CONTRACTOR FOR PROPOSED UTILITY WORK SHOWN ON THIS SHEET.



5/14/99
5/13/2021 3:40:18 PM
R:\US\118\5878\RDY\56\U013.psh.dgn

MATCH TO -Y15- POC Sta. 20+00.00 - SHEET UO-7

MATCH TO -Y25A- POC Sta. 22+50.00 - SHEET UO-7

-Y25- POT Sta. 14+50.03 =
-Y25A- POT Sta. 12+55.59
-Y25A- POT Sta. 10+00.00

BEGIN CONSTRUCTION
BEGIN MILL & RESURFACING
-Y25A- POT Sta. 10+84.53

-Y25- PT Sta. 14+28.10
-Y25- PC Sta. 13+66.65

-Y25- POT Sta. 10+43.34

MATCH TO -Y15- POT Sta. 8+00.00 - SHEET UO-14

PNG ABANDONED
PNG PROP. LINE

CENTURYLINK PROP. UG CABLE
CONTERRA PROP. UG CABLE
CONTERRA ABANDONED
SPECTRUM PROP. UG CABLE

DUKE POWER TO PROVIDE SERVICE FOR SIGNALS

DUKE PROP. OH LINE
PNG PROP. LINE
PNG ABANDONED

CONTERRA PROP. UG CABLE
CONTERRA ABANDONED

SPECTRUM PROP. UG CABLE
SPECTRUM ABANDONED
DUKE PROP. OH LINE

PNG LOWER IN PLACE

PNG REMAIN
CENTURYLINK PROP. UG CABLE

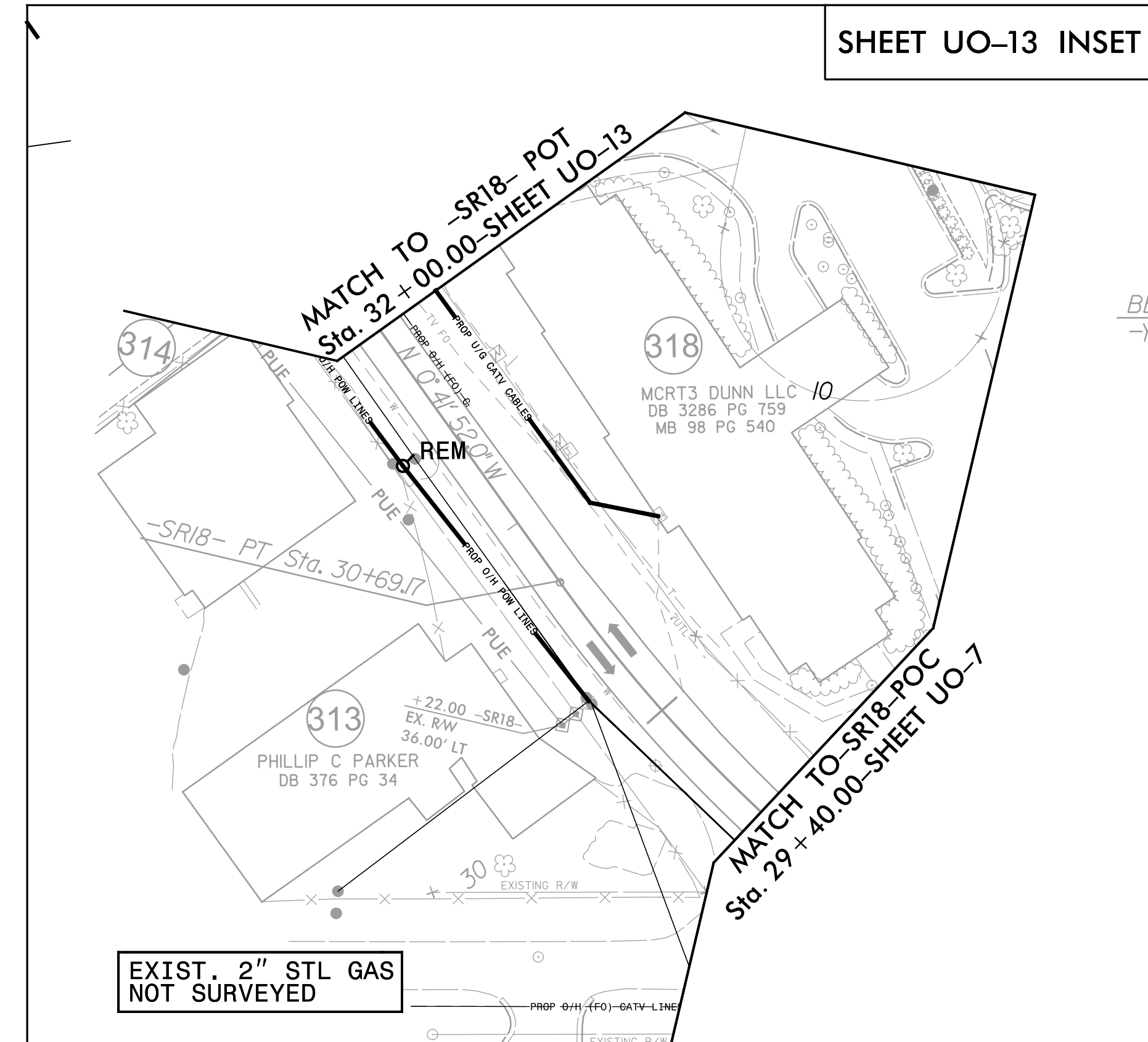
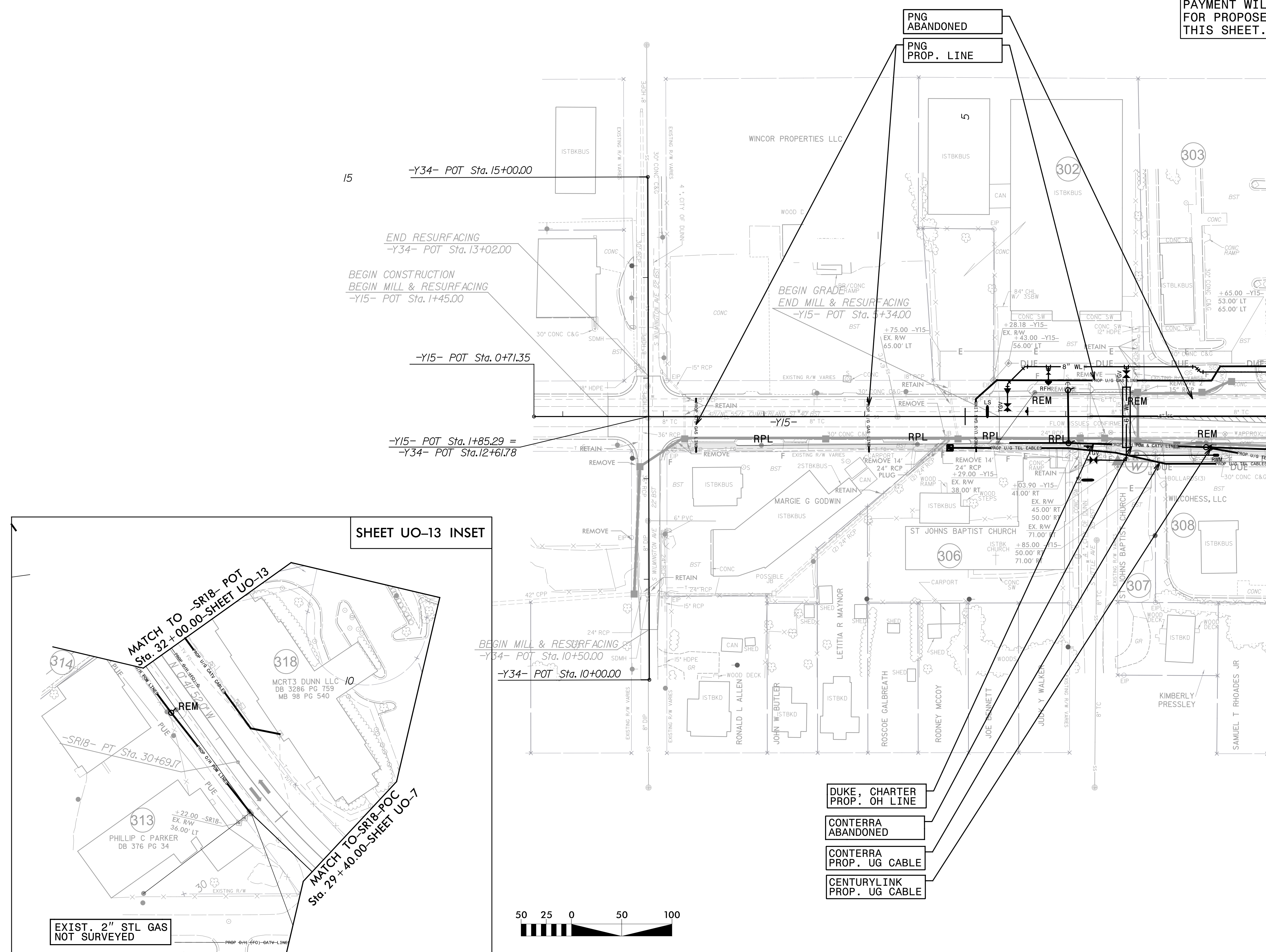
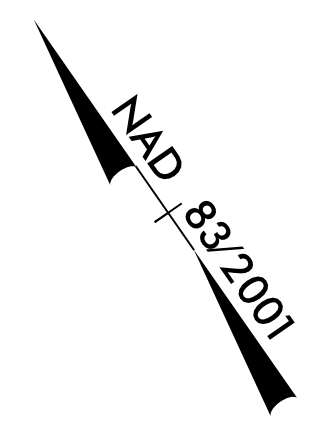


MATCH TO -SR18- POT Sta. 32+00.00 - SHEET UO-14 INSET

Michael Baker INTERNATIONAL
Michael Baker Engineering, Inc.
8000 Regency Parkway, Suite 600
Cary, NC 27518
919-463-5488

UTILITIES BY OTHERS

ALL PROPOSED UTILITY WORK SHOWN ON THIS SHEET WILL BE DONE BY OTHERS. NO PAYMENT WILL BE MADE TO THE CONTRACTOR FOR PROPOSED UTILITY WORK SHOWN ON THIS SHEET.



- DUKE, CHARTER PROP. OH LINE
- CONTERRA ABANDONED
- CONTERRA PROP. UG CABLE
- CENTURYLINK PROP. UG CABLE



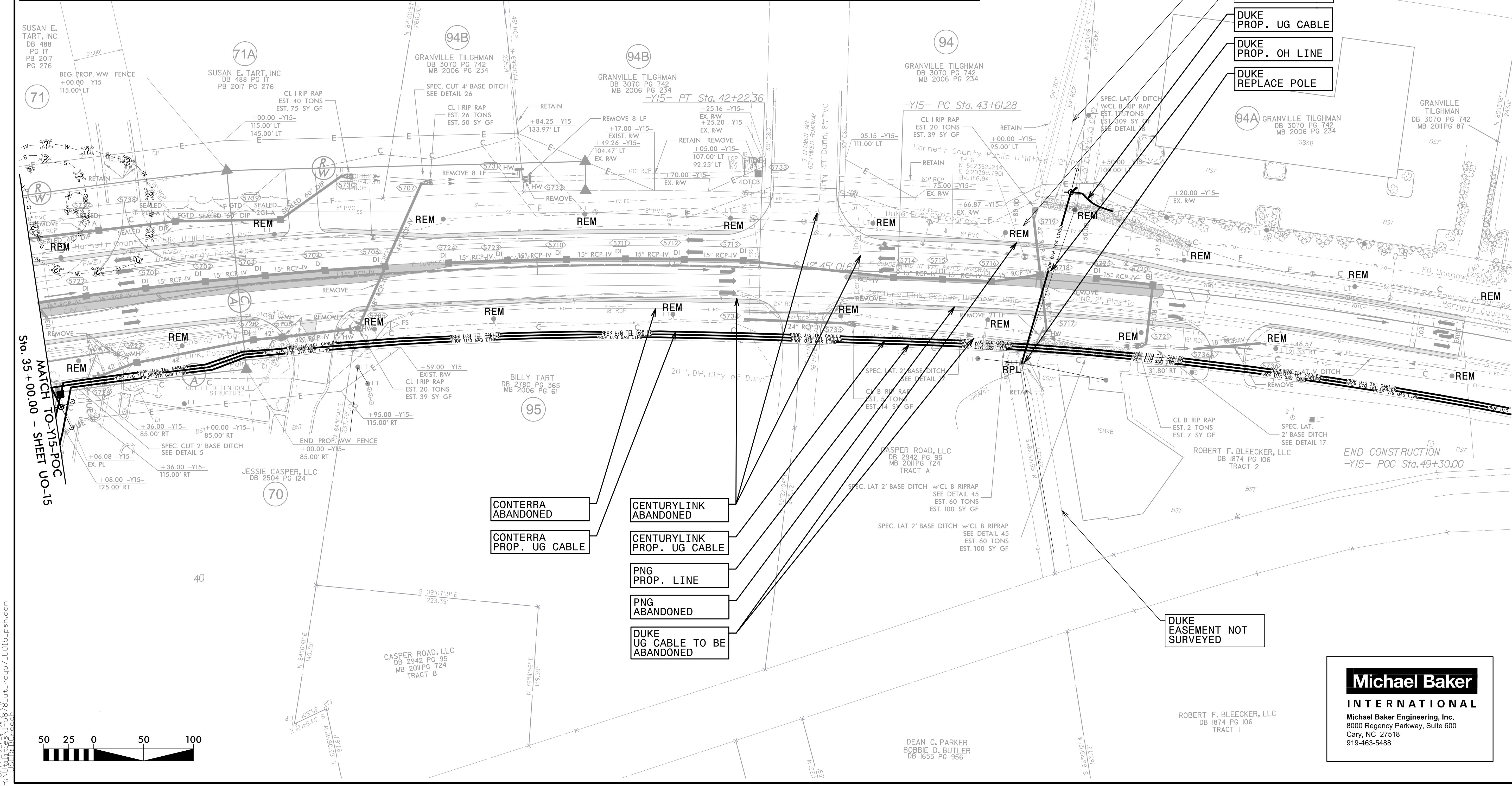
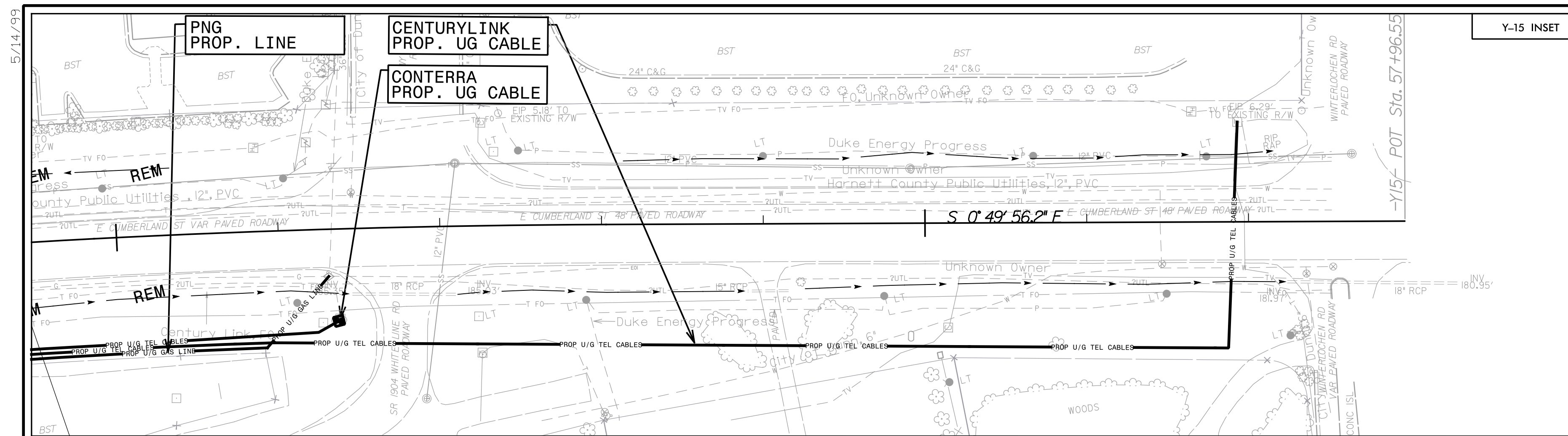
MATCH TO -Y15- POT Sta. 8+00.00 - SHEET UO-13

Michael Baker
INTERNATIONAL
Michael Baker Engineering, Inc.
8000 Regency Parkway, Suite 600
Cary, NC 27518
919-463-5488

5/14/99
6/21/2021 3:00:48 PM
RDY-56A_U014_psh.dgn

UTILITIES BY OTHERS

ALL PROPOSED UTILITY WORK SHOWN ON THIS SHEET WILL BE DONE BY OTHERS. NO PAYMENT WILL BE MADE TO THE CONTRACTOR FOR PROPOSED UTILITY WORK SHOWN ON THIS SHEET.



- CONTERRA ABANDONED
- CONTERRA PROP. UG CABLE
- CENTURYLINK ABANDONED
- CENTURYLINK PROP. UG CABLE
- PNG PROP. LINE
- PNG ABANDONED
- DUKE UG CABLE TO BE ABANDONED

- DUKE EASEMENT NOT SURVEYED
- SPECTRUM ABANDONED
- DUKE PROP. UG CABLE
- DUKE PROP. OH LINE
- DUKE REPLACE POLE

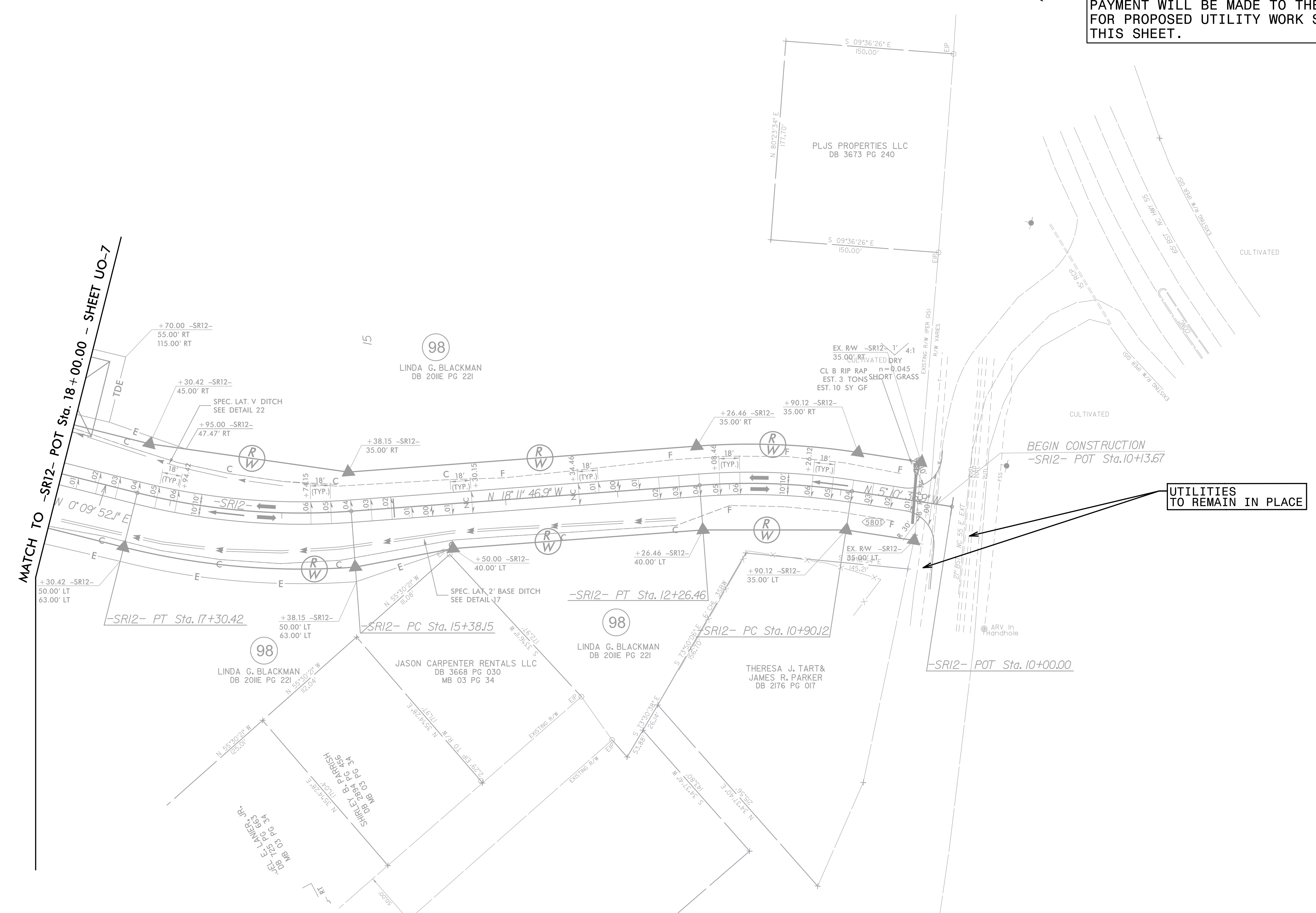
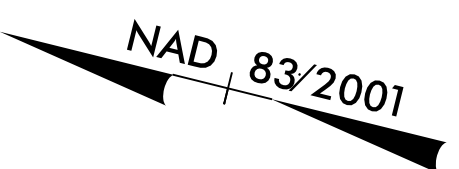
DUKE EASEMENT NOT SURVEYED

Michael Baker INTERNATIONAL
 Michael Baker Engineering, Inc.
 8000 Regency Parkway, Suite 600
 Cary, NC 27518
 919-463-5488

3/11/2021 2:49:13 PM
 R:\US\1158\1158.dwg
 R:\US\1158\1158.dwg

UTILITIES BY OTHERS

ALL PROPOSED UTILITY WORK SHOWN ON THIS SHEET WILL BE DONE BY OTHERS. NO PAYMENT WILL BE MADE TO THE CONTRACTOR FOR PROPOSED UTILITY WORK SHOWN ON THIS SHEET.



MATCH TO -SR12- POT Sta. 18+00.00 - SHEET UO-7



Michael Baker
INTERNATIONAL
 Michael Baker Engineering, Inc.
 8000 Regency Parkway, Suite 600
 Cary, NC 27518
 919-463-5488

5/14/99
 R:\U0016\5878\RDY\5878.dwg
 3/11/2021 2:49:18 PM
 R:\U0016\5878\RDY\5878.dwg
 5/14/99