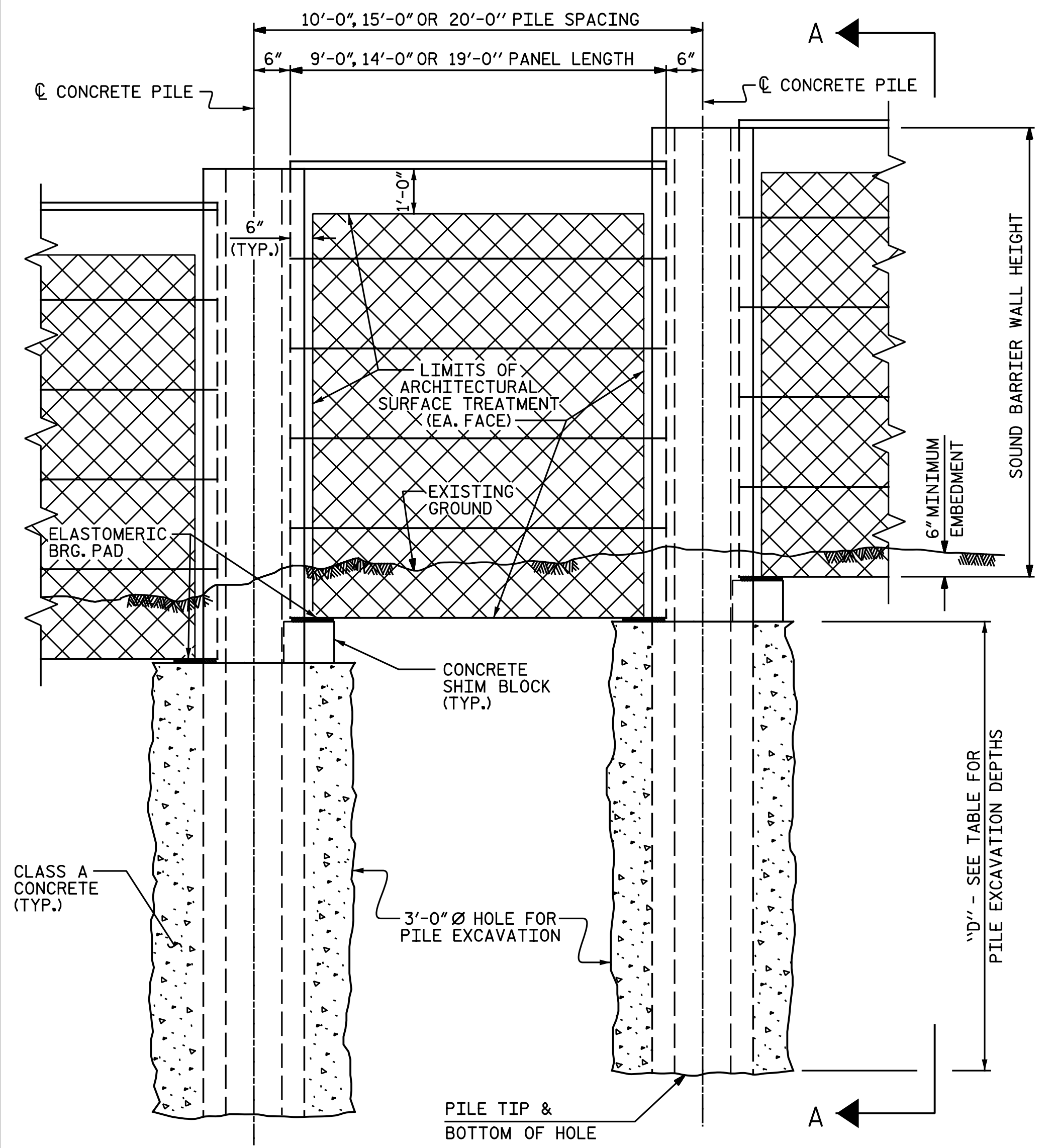
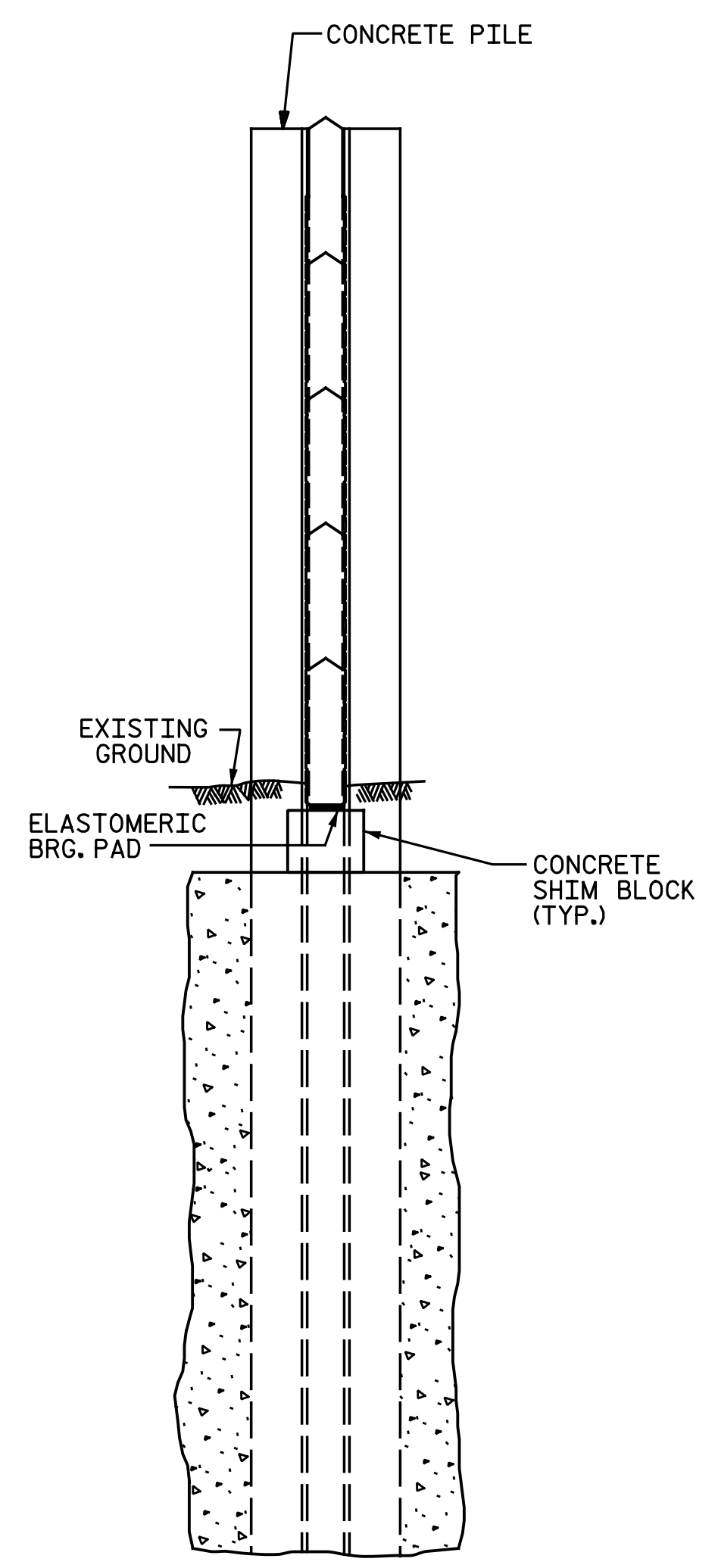


NOTES

- FOR SOUND BARRIER WALL, SEE SPECIAL PROVISIONS.
- CONSTRUCT SOUND BARRIER WALL TO LINES AND GRADES SHOWN ON THE ROADWAY PLANS.
- PROVIDE PANELS WITH A FLAT BOTTOM.
- VERIFY THE LOCATION OF UNDERGROUND UTILITIES BEFORE DRILLING HOLES TO ENSURE SUFFICIENT CLEARANCE IS AVAILABLE.
- ADJUST PILE EXCAVATION ELEVATIONS TO MAINTAIN 6" MINIMUM EMBEDMENT OF THE BOTTOM PANEL.
- USE CLASS AA FOR PANELS AND CLASS A CONCRETE PILE EXCAVATION BACKFILL, IN ACCORDANCE WITH ARTICLE 1000-4 OF THE STANDARD SPECIFICATIONS.
- AT THE CONTRACTOR'S OPTION, USE 10'-0", 15'-0", OR 20'-0" PILE SPACINGS. STANDARD PRECAST CONCRETE PANELS MAY BE USED WITH THE 10'-0" AND 15'-0" PILE SPACING. FOR 20'-0" PILE SPACING, PANELS DESIGNED AND MANUFACTURED BY A THIRD PARTY VENDOR SHALL BE USED.
- FOR SOUND BARRIER WALL STATIONS, OFFSETS, AND WALL ENVELOPE, SEE ROADWAY PLANS.
- PLACE 1" Ø BACKER RODS FULL HEIGHT ON EACH SIDE OF THE PRECAST PANELS. SET AND SEAL THE BACKER ROD IN PLACE WITH SEALANT THAT CONFORMS WITH ARTICLE 1028-3 OF THE STANDARD SPECIFICATIONS.
- FOR SUBMITTAL OF WORKING DRAWINGS, SEE SPECIAL PROVISIONS.
- FOR FALSEWORK AND FORMWORK, SEE SPECIAL PROVISIONS.

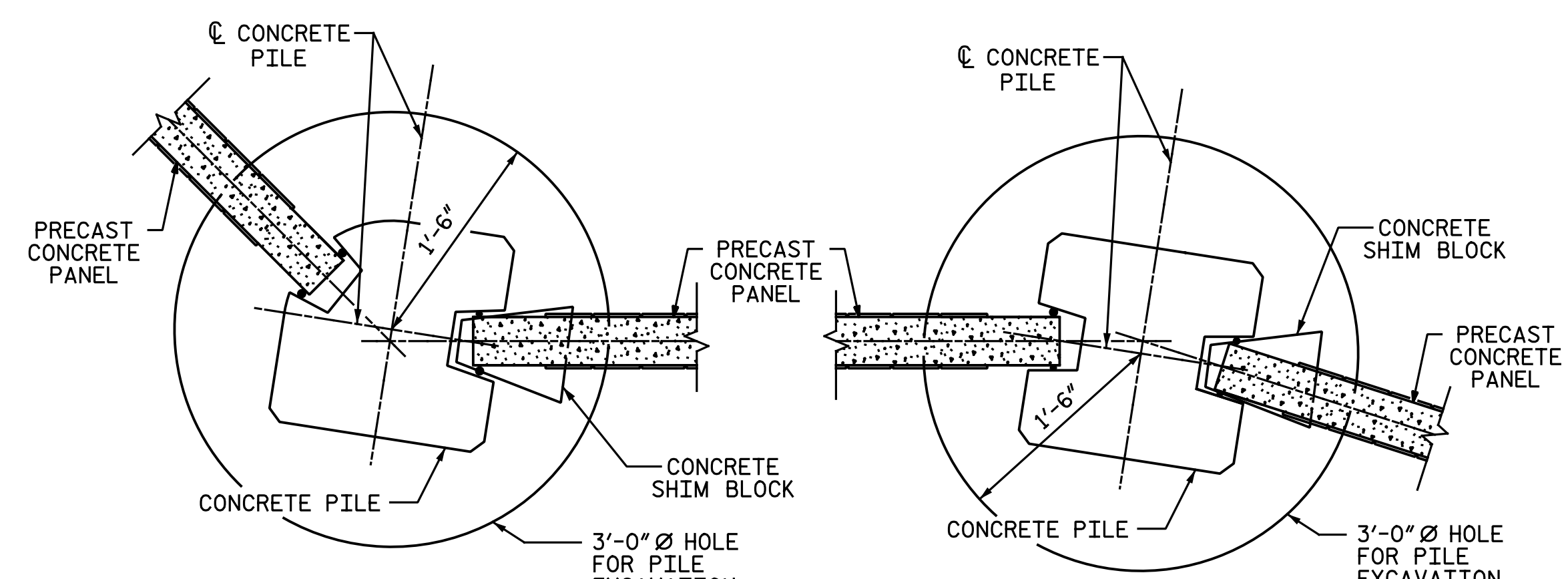


ELEVATION

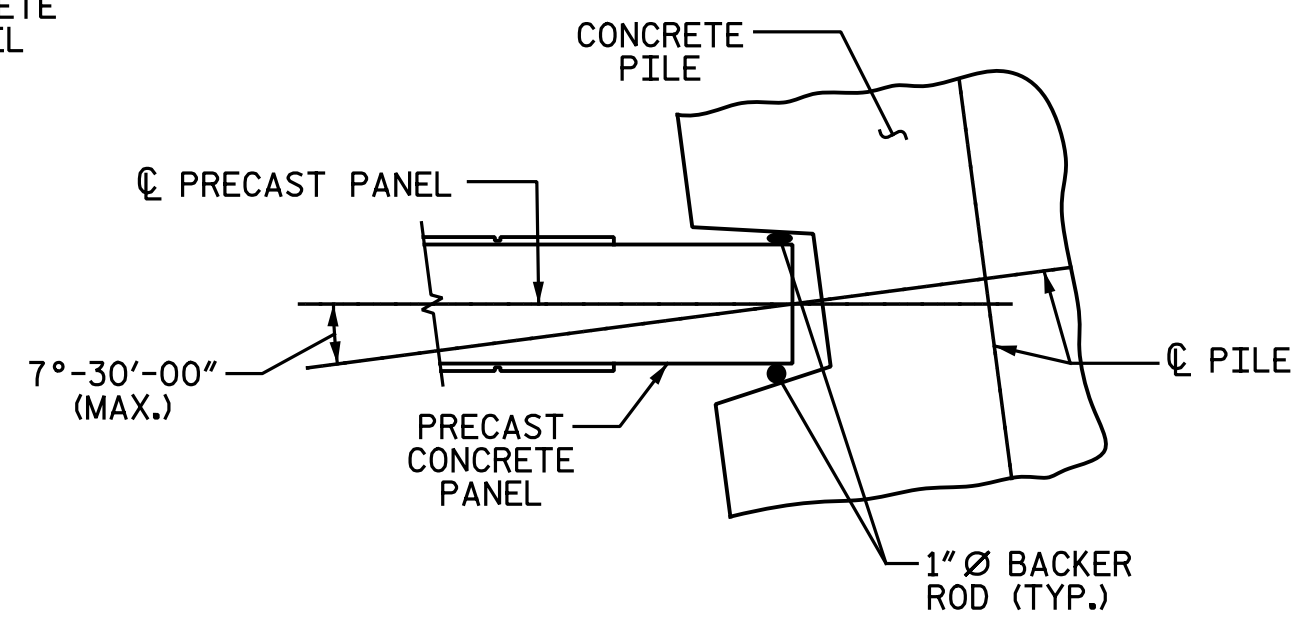


SECTION A-A

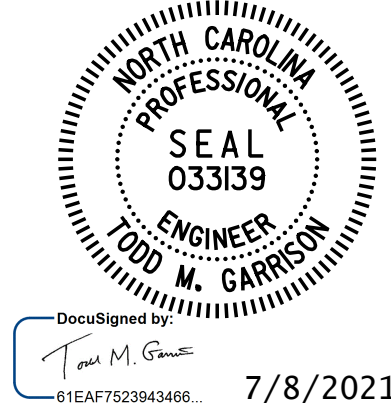
PILE REINFORCING STEEL DESIGN WIND PRESSURE = 40 PSF							
PILE TYPE I				PILE TYPE III			
PILE SPACING	MAXIMUM WALL HEIGHT (H)	VERTICAL REINFORCING STEEL	TIES	PILE SPACING	MAXIMUM WALL HEIGHT (H)	VERTICAL REINFORCING STEEL	TIES
10'-0"	H ≤ 25'	4 - #8 EA. FACE	#3 @ 1'-4" CTS.	10'-0"	H ≤ 25'	3 - #9 SHORT FACE 4 - #9 LONG FACE	#3 @ 1'-4" CTS.
15'-0"	H ≤ 20'	4 - #8 EA. FACE	#3 @ 1'-4" CTS.	15'-0"	H ≤ 20'	3 - #9 SHORT FACE 4 - #9 LONG FACE	#3 @ 1'-4" CTS.
	20' < H ≤ 25'	4 - #10 EA. FACE	#3 @ 1'-4" CTS.		20' < H ≤ 25'	3 - #11 SHORT FACE 4 - #11 LONG FACE	#3 @ 1'-4" CTS.
20'-0"	H ≤ 20'	4 - #9 EA. FACE	#3 @ 1'-4" CTS.	20'-0"	H ≤ 20'	3 - #10 SHORT FACE 4 - #10 LONG FACE	#3 @ 1'-4" CTS.
	20' < H ≤ 25'	4 - #11 EA. FACE	#3 @ 1'-4" CTS.				
PILE TYPE II				PILE TYPE III ALT.			
PILE SPACING	MAXIMUM WALL HEIGHT (H)	VERTICAL REINFORCING STEEL	TIES	PILE SPACING	MAXIMUM WALL HEIGHT (H)	VERTICAL REINFORCING STEEL	TIES
10'-0"	H ≤ 25'	4 - #6 EA. FACE	#3 @ 1'-4" CTS.	10'-0"	H ≤ 25'	3 - #9 SHORT FACE 4 - #9 LONG FACE	#3 @ 1'-4" CTS.
15'-0"	H ≤ 20'	4 - #6 EA. FACE	#3 @ 1'-4" CTS.	15'-0"	H ≤ 20'	3 - #9 SHORT FACE 4 - #9 LONG FACE	#3 @ 1'-4" CTS.
	20' < H ≤ 25'	4 - #7 EA. FACE	#3 @ 1'-4" CTS.		20' < H ≤ 25'	3 - #11 SHORT FACE 4 - #11 LONG FACE	#3 @ 1'-4" CTS.
20'-0"	H ≤ 20'	4 - #6 EA. FACE	#3 @ 1'-4" CTS.	20'-0"	H ≤ 20'	3 - #10 SHORT FACE 4 - #10 LONG FACE	#3 @ 1'-4" CTS.
	20' < H ≤ 25'	4 - #8 EA. FACE	#3 @ 1'-4" CTS.				



TYPICAL WALL TURN DETAILS



PROJECT NO. I-5986B  
 HARNETT & JOHNSTON COUNTY  
 STATION: 10+00.00 NW32-1  
10+00.00 NW33-1  
 SHEET 1 OF 4



STATE OF NORTH CAROLINA  
 DEPARTMENT OF TRANSPORTATION  
 RALEIGH  
 STANDARD  
 SOUND BARRIER WALL

ASSEMBLED BY : N. B. SPEAKS	DATE : 7-8-21
CHECKED BY : V. A. PATEL	DATE : 7-8-21
DRAWN BY : MAA 6/11	REV. 9/26/14 MAA/TMG
CHECKED BY : GM 6/11	REV. 10/17 MAA/THC
	REV. 5/18 MAA/THC

DOCUMENT NOT CONSIDERED FINAL  
 UNLESS ALL SIGNATURES COMPLETED

**Michael Baker INTERNATIONAL**  
 Michael Baker Engineering  
 8000 Regency Parkway, Suite 600  
 Cary, North Carolina 27518  
 NC License No.: F-1084

REVISIONS						SHEET NO.
NO.	BY:	DATE:	NO.	BY:	DATE:	NW-1
1			3			TOTAL SHEETS
2			4			4