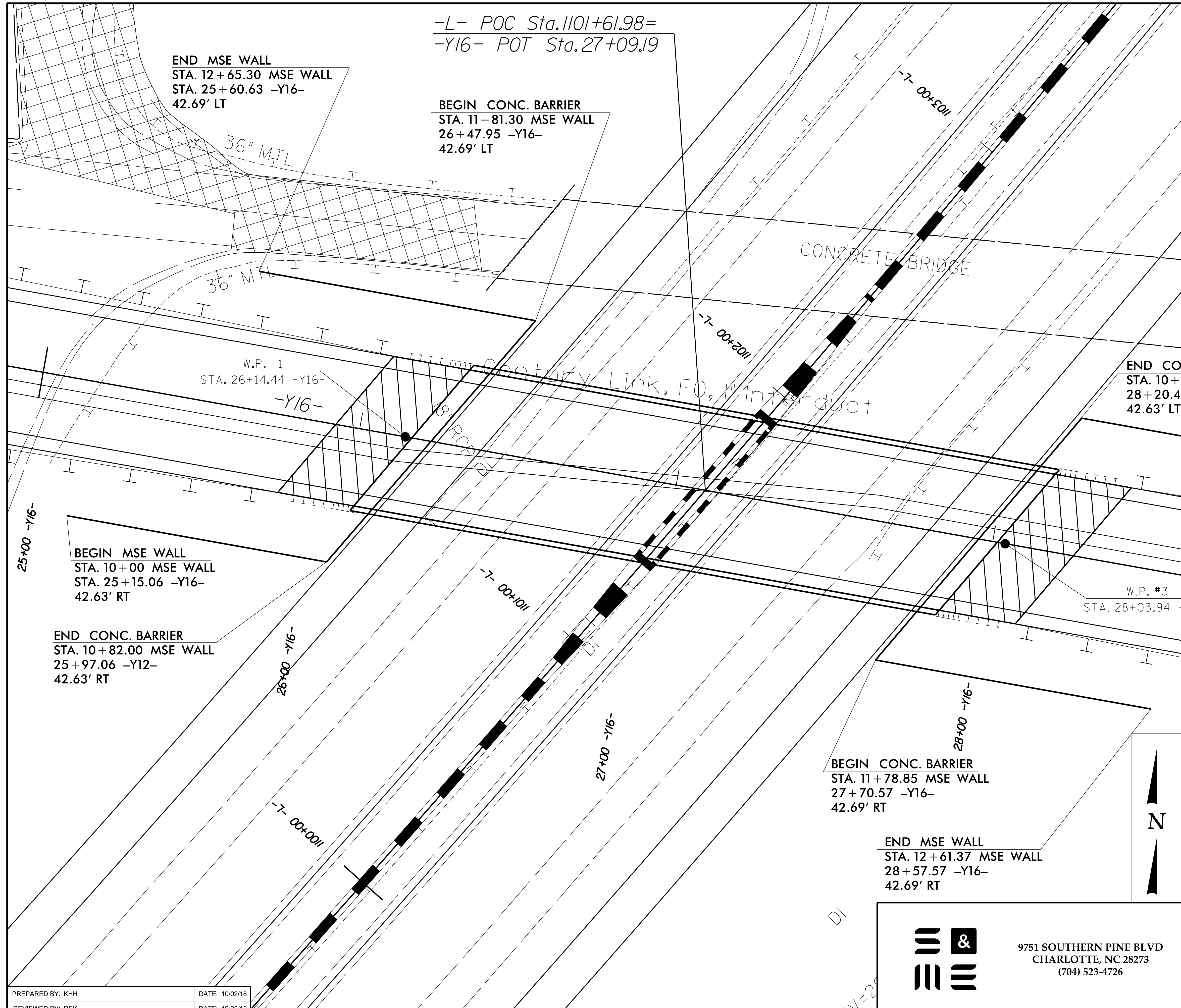


GEOTECHNICAL ENGINEER

ENGINEER

DocuSigned by:  
Kristen Hill  
5/12/2021

SIGNATURE DATE SIGNATURE DATE



END MSE WALL  
 STA. 12+65.30 MSE WALL  
 STA. 25+60.63 -Y16-  
 42.69' LT

-L- POC Sta. 1101+61.98=  
 -Y16- POT Sta. 27+09.19

BEGIN CONC. BARRIER  
 STA. 11+81.30 MSE WALL  
 26+47.95 -Y16-  
 42.69' LT

W.P. #1  
 STA. 26+14.44 -Y16-  
 -Y16-

BEGIN MSE WALL  
 STA. 10+00 MSE WALL  
 STA. 25+15.06 -Y16-  
 42.63' RT

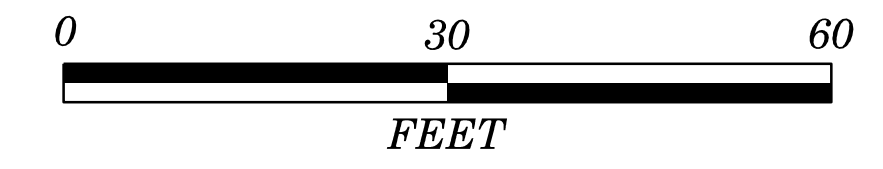
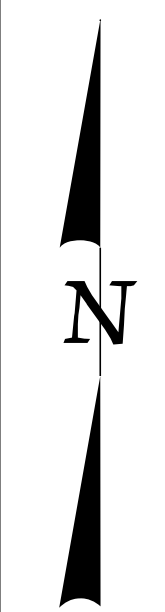
END CONC. BARRIER  
 STA. 10+82.00 MSE WALL  
 25+97.06 -Y12-  
 42.63' RT

END CONC. BARRIER  
 STA. 10+80.00 MSE WALL  
 28+20.49 -Y16- 42.63' LT  
 BEGIN MSE WALL  
 STA. 10+00.00 MSE WALL  
 STA. 29+09.66 -Y16-  
 42.63' LT

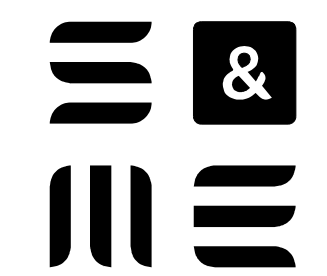
W.P. #3  
 STA. 28+03.94 -Y16-

BEGIN CONC. BARRIER  
 STA. 11+78.85 MSE WALL  
 27+70.57 -Y16-  
 42.69' RT

END MSE WALL  
 STA. 12+61.37 MSE WALL  
 28+57.57 -Y16-  
 42.69' RT



PROJECT NO.: I-5883  
 HARNETT COUNTY  
 STATION: 27+09.19 -Y16- / 1101+61.98 -L-  
 SHEET 1 OF 5



9751 SOUTHERN PINE BLVD  
 CHARLOTTE, NC 28273  
 (704) 523-4726

MSE RETAINING WALL  
 NO. 1 AND NO. 2  
 LOCATION PLAN

PREPARED BY: KHH DATE: 10/02/18  
 REVIEWED BY: REK DATE: 10/02/18

REVISIONS					
NO.	BY	DATE	NO.	BY	DATE
1			3		
2			4		

SHEET NO. WV-1