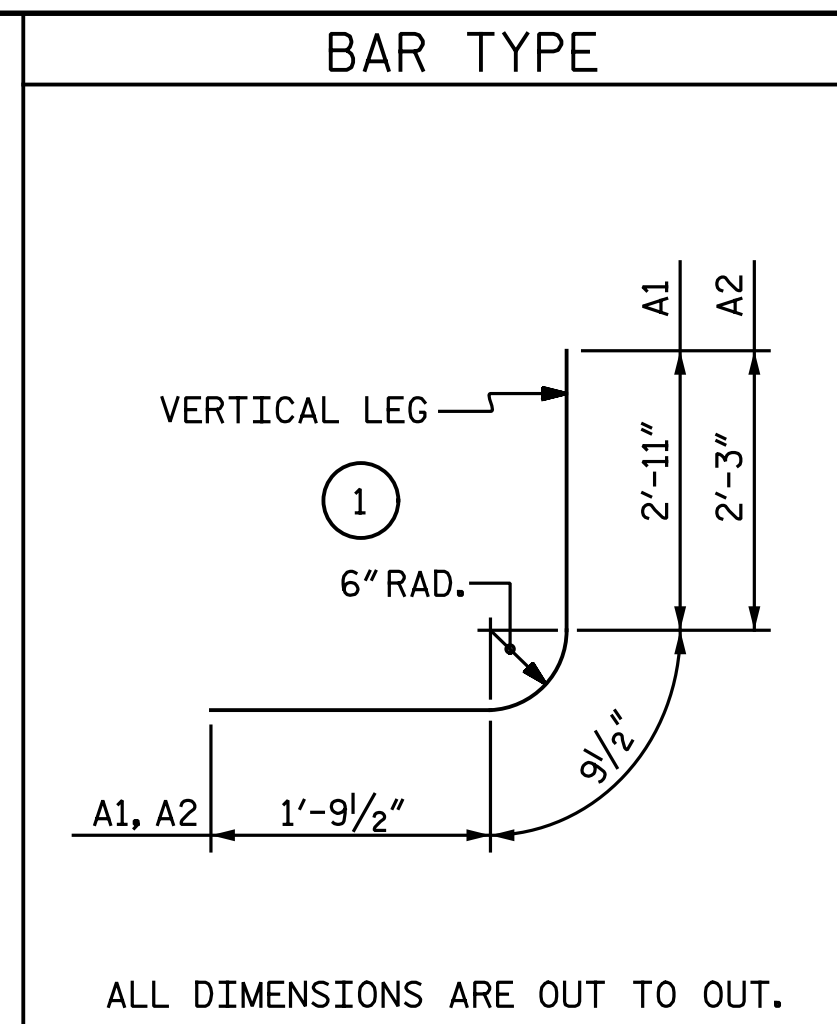


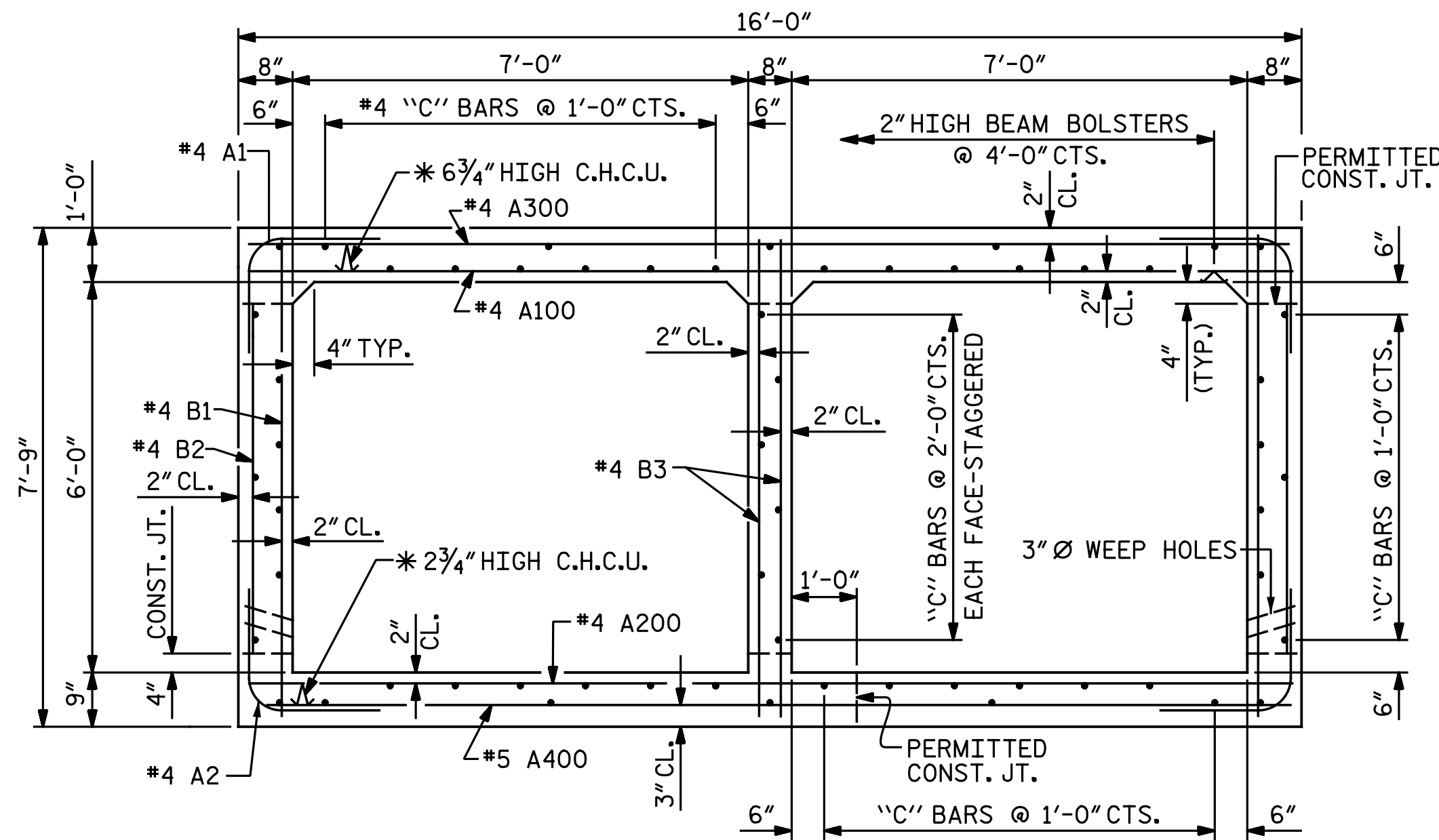
STAGE I QUANTITIES	
CULVERT EXCAVATION	LUMP SUM
FOUNDATION CONDITIONING MATERIAL	94 TONS
CLASS A CONCRETE	
BARREL @ 1.49 CY/FT	99.4 C.Y.
WINGS, ETC.	13.4 C.Y.
TOTAL	112.8 C.Y.
REINFORCING STEEL	
BARREL	13,712 LBS.
WINGS, ETC.	714 LBS.
TOTAL	14,426 LBS.

STAGE II QUANTITIES	
CULVERT EXCAVATION	LUMP SUM
FOUNDATION CONDITIONING MATERIAL	183 TONS
CLASS A CONCRETE	
BARREL @ 1.49 CY/FT	193.7 C.Y.
WINGS, ETC.	13.4 C.Y.
TOTAL	207.1 C.Y.
REINFORCING STEEL	
BARREL	26,410 LBS.
WINGS, ETC.	714 LBS.
TOTAL	27,124 LBS.

STAGE III QUANTITIES	
CULVERT EXCAVATION	LUMP SUM
FOUNDATION CONDITIONING MATERIAL	94 TONS
CLASS A CONCRETE	
BARREL @ 1.49 CY/FT	99.8 C.Y.
WINGS, ETC.	0.0 C.Y.
TOTAL	99.8 C.Y.
REINFORCING STEEL	
BARREL	13,515 LBS.
WINGS, ETC.	0 LBS.
TOTAL	13,515 LBS.



BILL OF MATERIAL STAGE I						BILL OF MATERIAL STAGE II						BILL OF MATERIAL STAGE III						
BAR	NO.	SIZE	TYPE	LENGTH	WEIGHT	BAR	NO.	SIZE	TYPE	LENGTH	WEIGHT	BAR	NO.	SIZE	TYPE	LENGTH	WEIGHT	
A1	290	#4	1	5' - 6"	1,065	A1	566	#4	1	5' - 6"	2,079	A1	292	#4	1	5' - 6"	1,073	
A2	290	#4	1	4' - 10"	936	A2	566	#4	1	4' - 10"	1,827	A2	292	#4	1	4' - 10"	943	
A100	113	#4	STR.	15' - 8"	1,183	A100	221	#4	STR.	15' - 8"	2,313	A100	115	#4	STR.	15' - 8"	1,204	
A101	1	#4	STR.	11' - 2"	7	A103	1	#4	STR.	13' - 3"	9							
A102	1	#4	STR.	6' - 5"	4	A104	1	#4	STR.	8' - 6"	6	A200	115	#4	STR.	15' - 8"	1,204	
						A105	1	#4	STR.	3' - 9"	3							
A200	113	#4	STR.	15' - 8"	1,183							A300	146	#4	STR.	15' - 8"	1,528	
A201	1	#4	STR.	11' - 2"	7	A200	221	#4	STR.	15' - 8"	2,313							
A202	1	#4	STR.	6' - 5"	4	A203	1	#4	STR.	13' - 3"	9	A400	146	#5	STR.	15' - 8"	2,386	
						A204	1	#4	STR.	8' - 6"	6							
A300	143	#4	STR.	15' - 8"	1,497	A205	1	#4	STR.	3' - 9"	3	B1	134	#4	STR.	7' - 4"	656	
A301	1	#4	STR.	14' - 3"	10							B2	292	#4	STR.	5' - 4"	1,040	
A302	1	#4	STR.	10' - 6"	7	A300	281	#4	STR.	15' - 8"	2,941	B3	133	#4	STR.	7' - 4"	652	
A303	1	#4	STR.	6' - 9"	5	A305	1	#4	STR.	13' - 7"	9							
A304	1	#4	STR.	3' - 0"	2	A306	1	#4	STR.	9' - 10"	7	C3	116	#4	STR.	34' - 6"	2,673	
						A307	1	#4	STR.	6' - 1"	4							
A400	143	#5	STR.	15' - 8"	2,337	A308	1	#4	STR.	2' - 4"	2	E1	32	#5	STR.	4' - 8"	156	
A401	1	#5	STR.	14' - 3"	15							REINFORCING STEEL					LBS.	13,515
A402	1	#5	STR.	10' - 6"	11	A400	281	#5	STR.	15' - 8"	4,592							
A403	1	#5	STR.	6' - 9"	7	A405	1	#5	STR.	13' - 7"	14							
A404	1	#5	STR.	3' - 0"	3	A406	1	#5	STR.	9' - 10"	10							
						A407	1	#5	STR.	6' - 1"	6							
B1	134	#4	STR.	7' - 4"	656	A408	1	#5	STR.	2' - 4"	2							
B2	290	#4	STR.	5' - 4"	1,033													
B3	133	#4	STR.	7' - 4"	652	B1	260	#4	STR.	7' - 4"	1,274							
						B2	566	#4	STR.	5' - 4"	2,016							
C1	116	#4	STR.	35' - 9"	2,770	B3	260	#4	STR.	7' - 4"	1,274							
G1	4	#5	STR.	15' - 9"	66	C2	232	#4	STR.	34' - 8"	5,373							
S2	6	#8	STR.	15' - 9"	252	G1	4	#5	STR.	15' - 9"	66							
REINFORCING STEEL					LBS.	13,712	REINFORCING STEEL					LBS.	26,410					



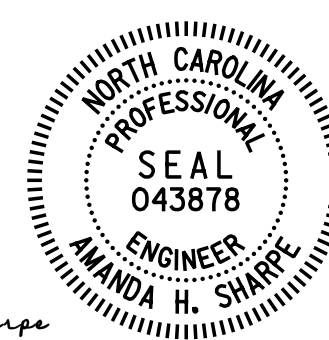
RIGHT ANGLE SECTION OF BARREL

THERE ARE 58 "C" BARS IN SECTION OF BARREL.
 * ALL CONTINUOUS HIGH CHAIR UPPER (C.H.C.U.) @ 3'-0" CTS.

SPLICE LENGTH CHART		
BAR	SIZE	SPLICE LENGTH
A200	#4	2'-5"
A400	#5	2'-2"
B1, B3	#4	1'-5"
C1, C2, C3	#4	1'-11"

PROJECT NO. I-5883
HARNETT COUNTY
 STATION: 1220+34.00 -L-

SHEET 5 OF 5
 STATE OF NORTH CAROLINA
 DEPARTMENT OF TRANSPORTATION
 RALEIGH
**DOUBLE 7 FT. X 6 FT.
 CONCRETE BOX CULVERT
 87° SKEW**



DocuSigned by:
 Amanda H. Sharpe
 51D8FF4E4CE402

12/11/2019
 DOCUMENT NOT CONSIDERED FINAL
 UNLESS ALL SIGNATURES COMPLETED

Michael Baker INTERNATIONAL
 Michael Baker Engineering
 8000 Regency Parkway, Suite 600
 Cary, North Carolina 27518
 NC License No.: F-1084

REVISIONS						SHEET NO.
NO.	BY:	DATE:	NO.	BY:	DATE:	CI-5
1			3			TOTAL SHEETS
2			4			7

DRAWN BY : N. B. SPEAKS DATE : 3-13-19
 CHECKED BY : A. H. SHARPE DATE : 6-14-19