

### NOTES

FOR BRIDGE APPROACH FILL INCLUDING GEOTEXTILE, MSE WALL REINFORCEMENT AND BACKFILL MATERIAL SEE ROADWAY PLANS.

GEOTEXTILE SHALL BE TYPE 1 IN ACCORDANCE WITH THE STANDARD SPECIFICATIONS SECTION 1056.

BACKFILL MATERIAL SHALL BE THE SAME MATERIAL USED IN THE MSE REINFORCED ZONE.

APPROACH SLAB SHALL NOT BE CONSTRUCTED PRIOR TO COMPLETION OF THE BRIDGE DECK.

AREA BETWEEN THE WINGWALL AND APPROACH SLAB SHALL BE GRADED TO DRAIN THE WATER AWAY FROM THE FILL FACE OF THE BRIDGE AND SHALL BE PAVED. SEE ROADWAY PLANS.

FOR EXPANSION JOINT SEALS, SEE SPECIAL PROVISIONS.

THE QUANTITY OF #4 "J" BARS ON THE BILL OF MATERIAL IS BASED ON 1'-0" CENTERS. "J" BARS SHALL BE PLACED AT EACH VERTICAL STUD ANCHOR BOLT. IN THE EVENT THAT THE NUMBER OF VERTICAL STUD ANCHORS EXCEEDS THE NUMBER OF "J" BARS SPECIFIED, ADDITIONAL "J" BARS WILL NOT BE REQUIRED.

(A) 24-#4 A1 @ 1'-0" CTS. (TOP OF SLAB, 3 BAR RUN)  
24-#4 A2 @ 1'-0" CTS. (BOTTOM OF SLAB, 3 BAR RUN)

(B) 81-#4 J1 SEE "EXP. JT. SEAL DETAILS" SHEET

(C) 24-#4 A3 @ 1'-0" CTS. (TOP OF SLAB, 2 BAR RUN)  
24-#4 A4 @ 1'-0" CTS. (BOTTOM OF SLAB, 2 BAR RUN)

(D) 69-#4 J2 SEE "EXP. JT. SEAL DETAILS" SHEET

### BILL OF MATERIAL

FOR ONE APPROACH SLAB (2 REQ'D)

#### STAGE I

BAR	NO.	SIZE	TYPE	LENGTH	WEIGHT
*A1	75	#4	STR.	30' - 3"	1,516
A2	78	#4	STR.	30' - 0"	1,563
*B1	161	#5	STR.	23' - 11"	4,016
B2	161	#6	STR.	24' - 7"	5,945
*B3	2	#5	STR.	9' - 8"	20
B4	2	#6	STR.	9' - 8"	29
*J1	81	#4	1	1' - 5"	77

REINFORCING STEEL \*\* LBS. 7,537  
\*EPOXY COATED REINFORCING STEEL \*\* LBS. 5,629

CLASS AA CONCRETE \*\* C.Y. 87.7

#### STAGE II

BAR	NO.	SIZE	TYPE	LENGTH	WEIGHT
*A3	50	#4	STR.	35' - 10"	1,197
A4	52	#4	STR.	35' - 9"	1,242
*B5	133	#5	STR.	23' - 11"	3,318
B6	133	#6	STR.	24' - 7"	4,911
*B7	2	#5	STR.	9' - 8"	20
B8	2	#6	STR.	9' - 8"	29
*J2	69	#4	1	1' - 5"	65

REINFORCING STEEL \*\* LBS. 6,182  
\*EPOXY COATED REINFORCING STEEL \*\* LBS. 4,600

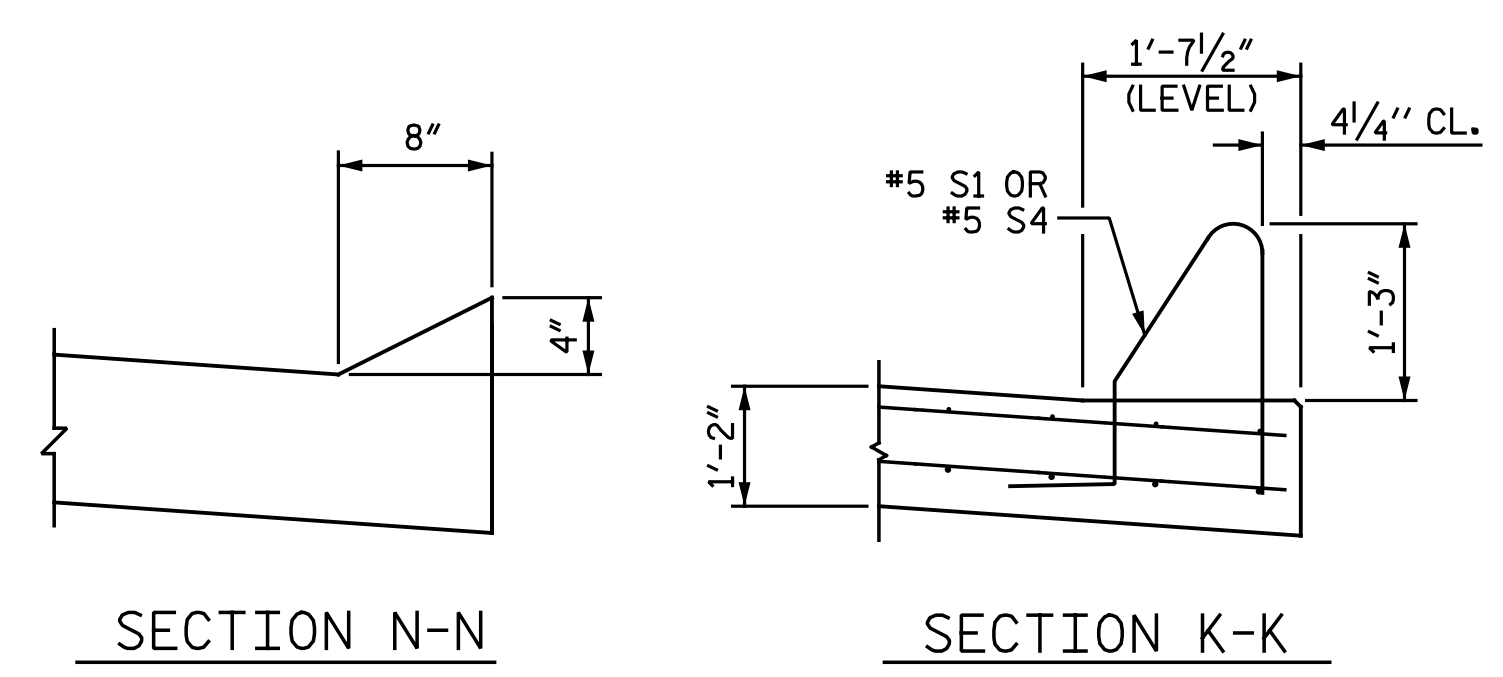
CLASS AA CONCRETE \*\* C.Y. 72.6

#### BAR TYPE

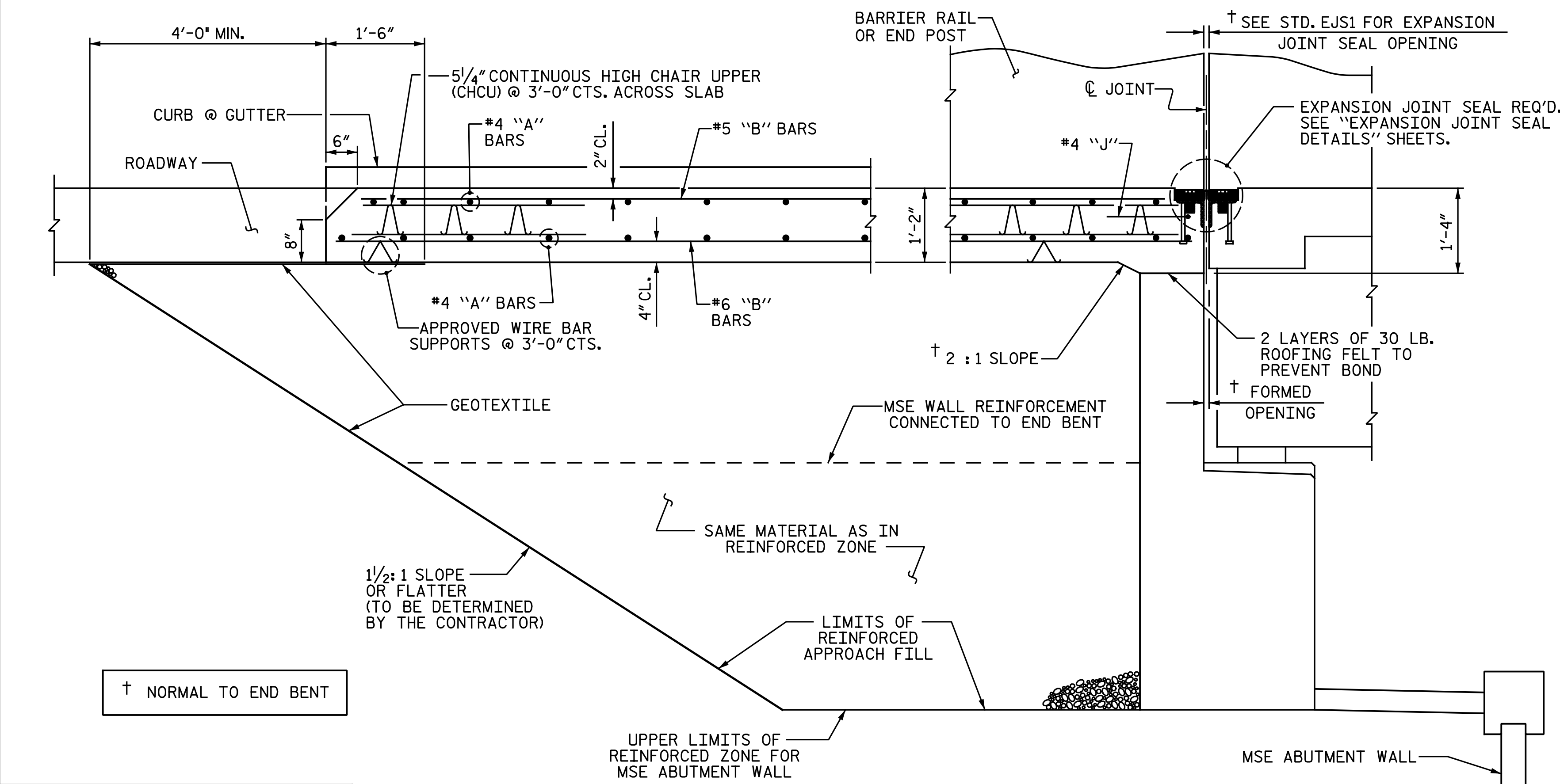
### SPLICE LENGTHS

BAR SIZE	EPOXY COATED	UNCOATED
#4	2'-0"	1'-9"
#5	2'-6"	2'-2"
#6	3'-10"	2'-7"

ALL BAR DIMENSIONS ARE OUT TO OUT  
\*\* QUANTITIES FOR BARRIER RAIL AND MEDIAN BARRIER NOT INCLUDED. SEE SHEET 2 OF 3 AND SHEET 3 OF 3.



CURB DETAILS



SECTION THRU SLAB

(TYPE III - REINFORCED APPROACH FILL)

ASSEMBLED BY : N. B. SPEAKS	DATE : 3-25-19
CHECKED BY : B. J. BELL	DATE : 8-23-19
DRAWN BY : EEM 3/95	REV. 12/21/11 MAA/GM
CHECKED BY : VAP 3/95	REV. 6/13 MAA/GM
	REV. 12/17 MAA/THC

DESIGNED BY: 4/22/2021

DOCUMENT NOT CONSIDERED FINAL UNLESS ALL SIGNATURES COMPLETED

**Michael Baker INTERNATIONAL**

Michael Baker Engineering  
8000 Regency Parkway, Suite 600  
Cary, North Carolina 27518  
NC License No.: F-1084

PROJECT NO. I-5878  
HARNETT COUNTY  
STATION: 1002+79.68 -LREV-

SHEET 1 OF 3

STATE OF NORTH CAROLINA  
DEPARTMENT OF TRANSPORTATION  
RALEIGH

STANDARD  
BRIDGE APPROACH SLAB  
FOR FLEXIBLE PAVEMENT

REVISIONS						SHEET NO.
NO.	BY:	DATE:	NO.	BY:	DATE:	
1			3			TOTAL SHEETS
2			4			34

STD. NO. BAS2