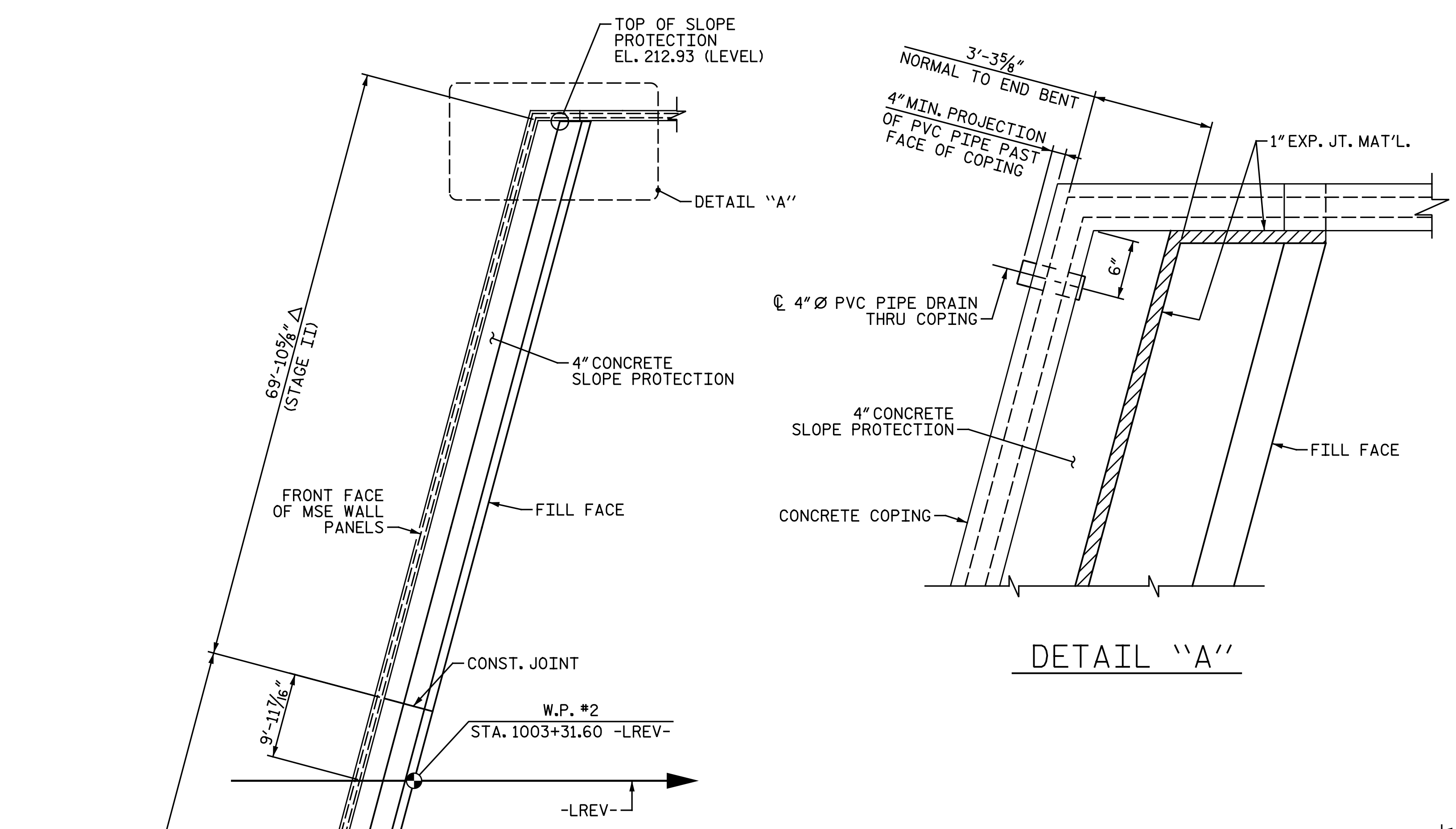


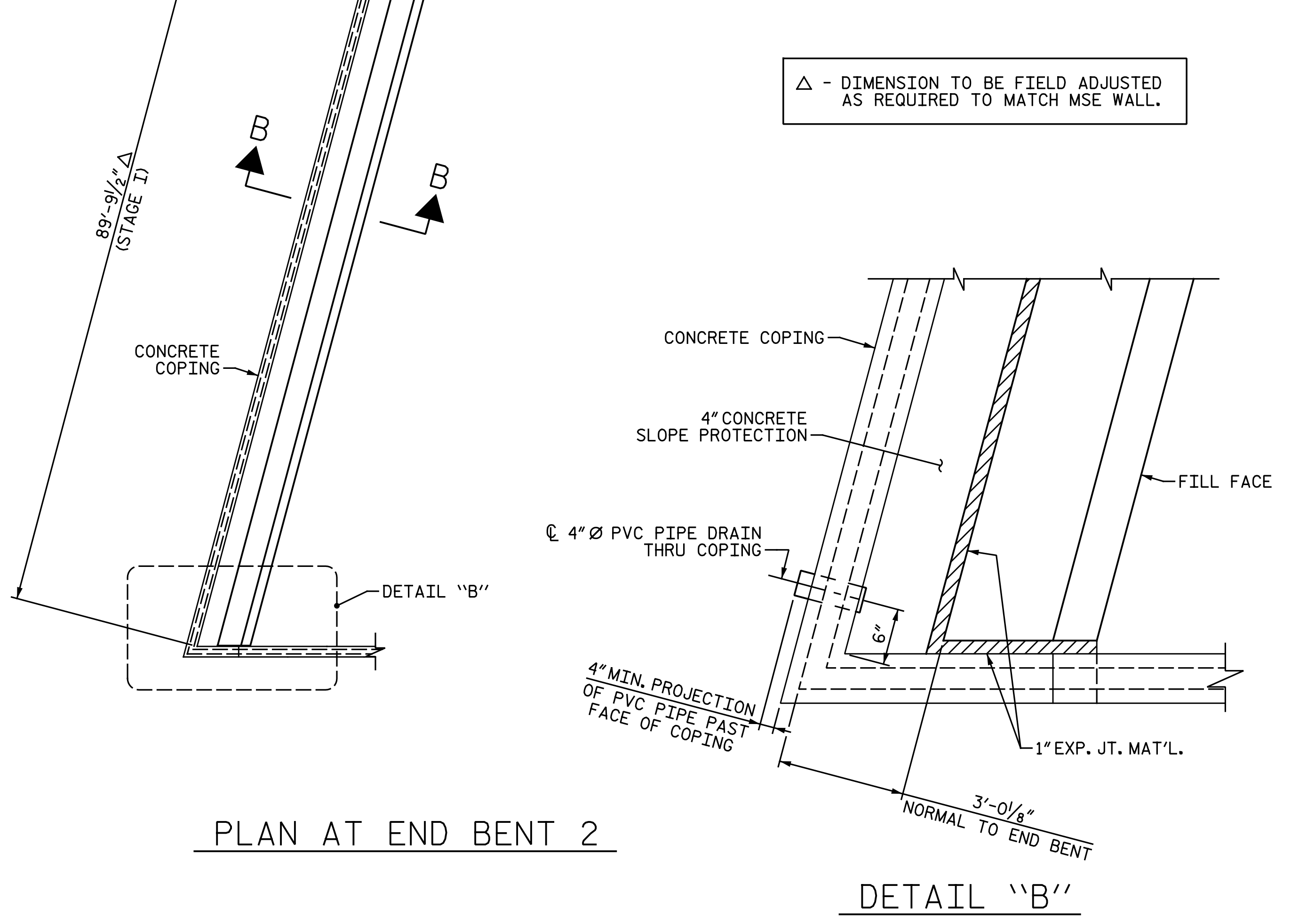
**NOTE:**  
SEE NOTES ON "SLOPE PROTECTION DETAILS END BENT 1" SHEET.

BRIDGE @ STA. 1002+79.68 -LREV-	4 INCH SLOPE PROTECTION	* WELDED WIRE FABRIC 60 INCHES WIDE
	SQUARE YARDS	APPROX. L.F.
END BENT 2 (STAGE I)	22	40
END BENT 2 (STAGE II)	19	34

\* QUANTITY SHOWN IS BASED ON 5' POURS.

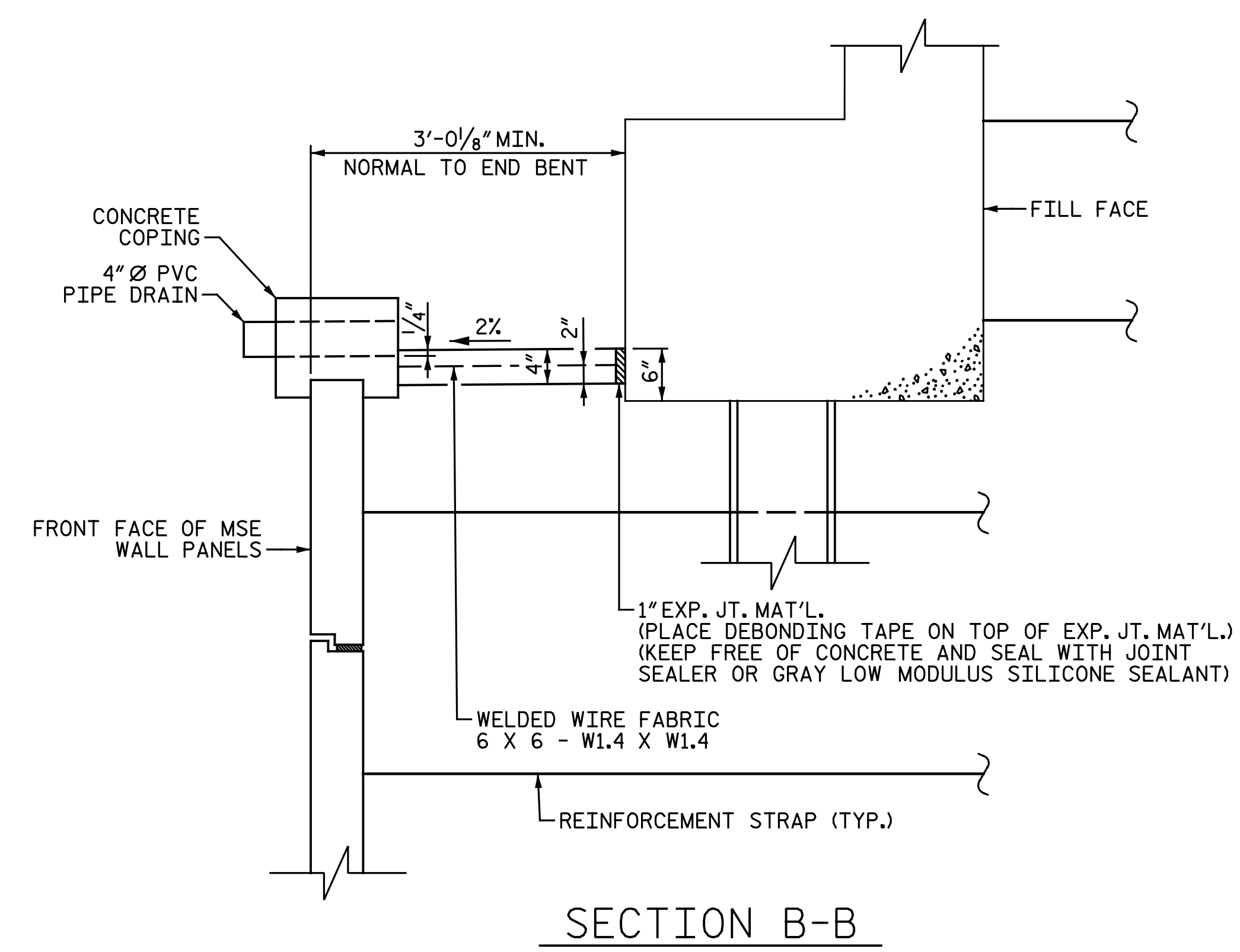


△ - DIMENSION TO BE FIELD ADJUSTED AS REQUIRED TO MATCH MSE WALL.

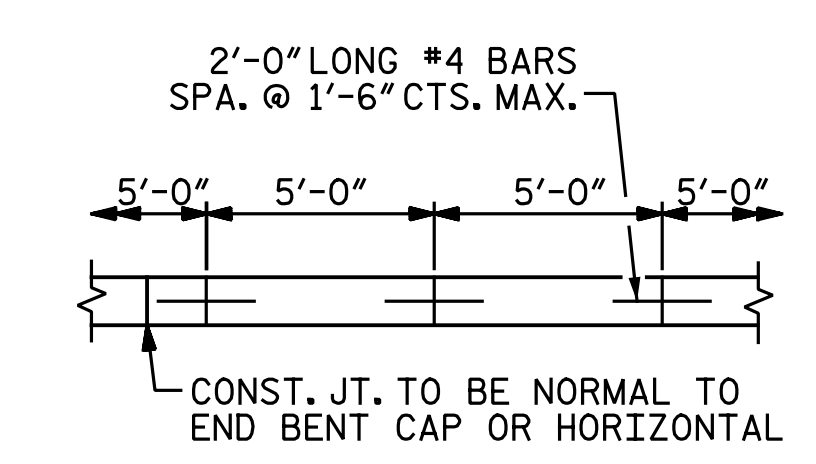


PLAN AT END BENT 2

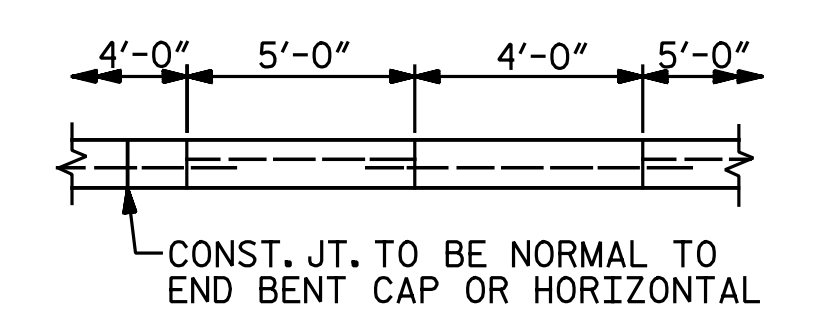
DETAIL "B"



SECTION B-B

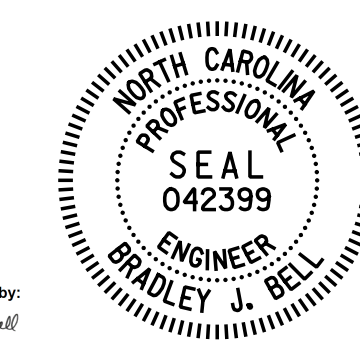


POURING DETAIL



OPTIONAL POURING DETAIL  
POUR A 4'-0" STRIP FIRST

PROJECT NO. I-5878  
HARNETT COUNTY  
STATION: 1002+79.68 -LREV-  
SHEET 2 OF 2



Designed by:  
4/22/2021

DOCUMENT NOT CONSIDERED FINAL  
UNLESS ALL SIGNATURES COMPLETED

**Michael Baker International**  
Michael Baker Engineering  
8000 Regency Parkway, Suite 600  
Cary, North Carolina 27518  
NC License No.: F-1084

STATE OF NORTH CAROLINA DEPARTMENT OF TRANSPORTATION RALEIGH					
SLOPE PROTECTION DETAILS END BENT 2					
REVISIONS					
NO.	BY:	DATE:	NO.	BY:	DATE:
1			3		
2			4		
SHEET NO. S2-31					TOTAL SHEETS 34

DRAWN BY : C. E. MAYHEW DATE : 7-15-19  
CHECKED BY : B. J. BELL DATE : 8-28-19