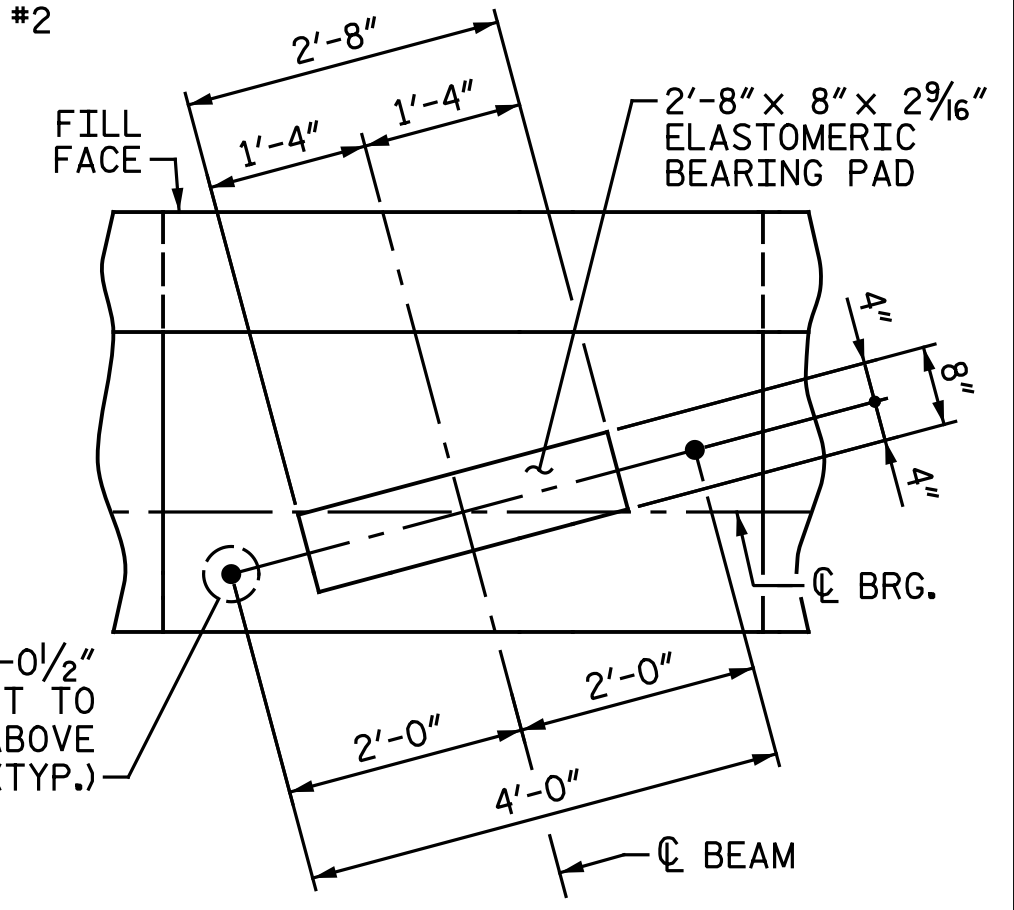
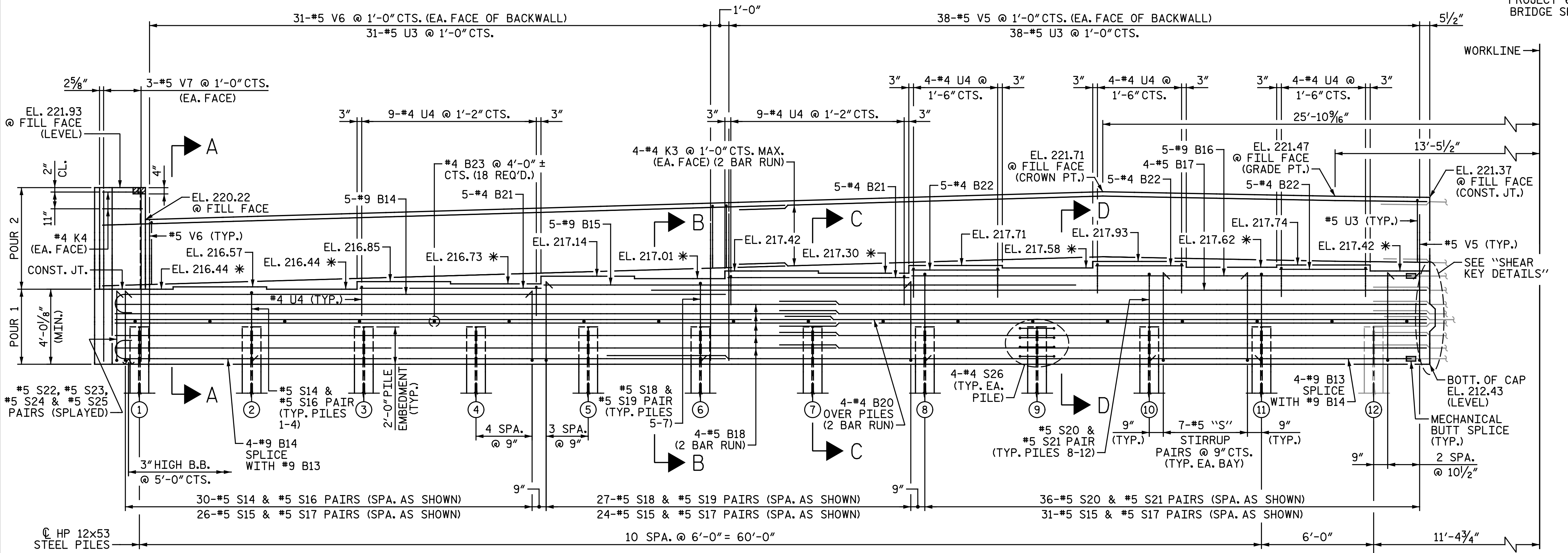


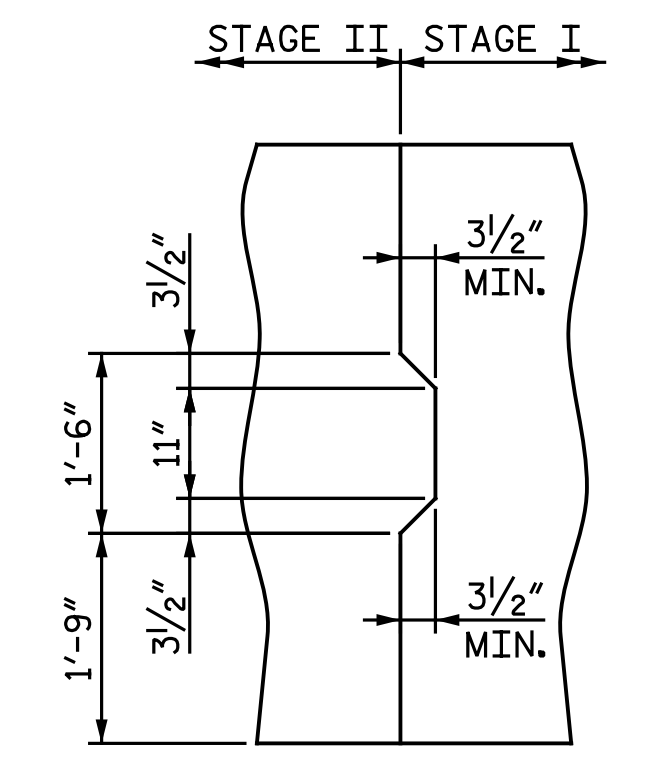
PLAN - STAGE II



DETAIL "A"
(TYP. EA. BRIDGE SEAT)



ELEVATION - STAGE II



SHEAR KEY DETAILS

*FOR LOCATION OF ELEVATIONS BETWEEN BRIDGE SEAT BUILD-UPS, SEE "SECTION A-A" ON "END BENT 2 DETAILS" SHEET.

NOTES:

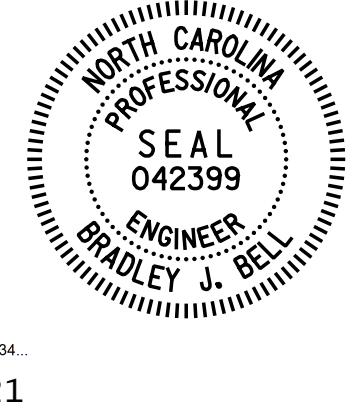
- FOR "BEAM SEAT DETAILS", SEE "END BENT 2 STAGE I" SHEET.
- FOR "SECTION A-A", "PARTIAL SECTION B-B", "PARTIAL SECTION C-C" AND "PARTIAL SECTION D-D", SEE "END BENT 2 DETAILS" SHEET.
- STIRRUPS & "U" BARS IN CAP MAY BE SHIFTED AS NECESSARY TO CLEAR ANCHOR BOLTS.
- BACKWALL SHALL BE PLACED BEFORE APPLYING THE EPOXY PROTECTIVE COATING.
- THE TOP SURFACE AREAS OF THE END BENT CAP SHALL BE CURED IN ACCORDANCE WITH THE STANDARD SPECIFICATIONS EXCEPT THE MEMBRANE CURING COMPOUND METHOD SHALL NOT BE USED.

- THE TOP SURFACE OF THE CAP EXCEPT THE BRIDGE SEAT BUILD-UPS SHALL BE SLOPED TRANSVERSELY FROM THE FILL FACE TO THE BACK FACE AT A RATE OF 2%.
- THE CONCRETE IN THE HATCHED AREA OF THE WING SHALL BE POURED AFTER THE BARRIER RAIL IS CAST IF SLIP FORMING IS USED.
- FOR MSE RETAINING WALLS, SEE SPECIAL PROVISIONS.
- FOR LOCATION & DETAILS OF MSE RETAINING WALLS AND PILE SLEEVES, SEE MSE WALL PLANS.
- LENGTH OF CAP SHALL BE FIELD ADJUSTED AS REQUIRED TO PROVIDE 1" EXPANSION JOINT MATERIAL AS SHOWN BETWEEN THE CAP AND MSE WALL COPING.

MIN. SPLICE LENGTHS	
BAR SIZE	UNCOATED
#4	2'-5"
#5	3'-0"
#9	6'-3"

DRAWN BY: M. D. MAYHEW DATE: 8-14-19
 CHECKED BY: B. J. BELL DATE: 9-17-19

PROJECT NO. I-5878
 HARNETT COUNTY
 STATION: 1002+79.68 -LREV-



DOCUMENT NOT CONSIDERED FINAL
 UNLESS ALL SIGNATURES COMPLETED

Michael Baker International
 Michael Baker Engineering
 8000 Regency Parkway, Suite 600
 Cary, North Carolina 27518
 NC License No.: F-1084

SHEET 2 OF 3

STATE OF NORTH CAROLINA DEPARTMENT OF TRANSPORTATION RALEIGH					
SUBSTRUCTURE					
END BENT 2 STAGE II					
REVISIONS					
NO.	BY:	DATE:	NO.	BY:	DATE:
1			3		
2			4		

SHEET NO. S2-28
 TOTAL SHEETS 34