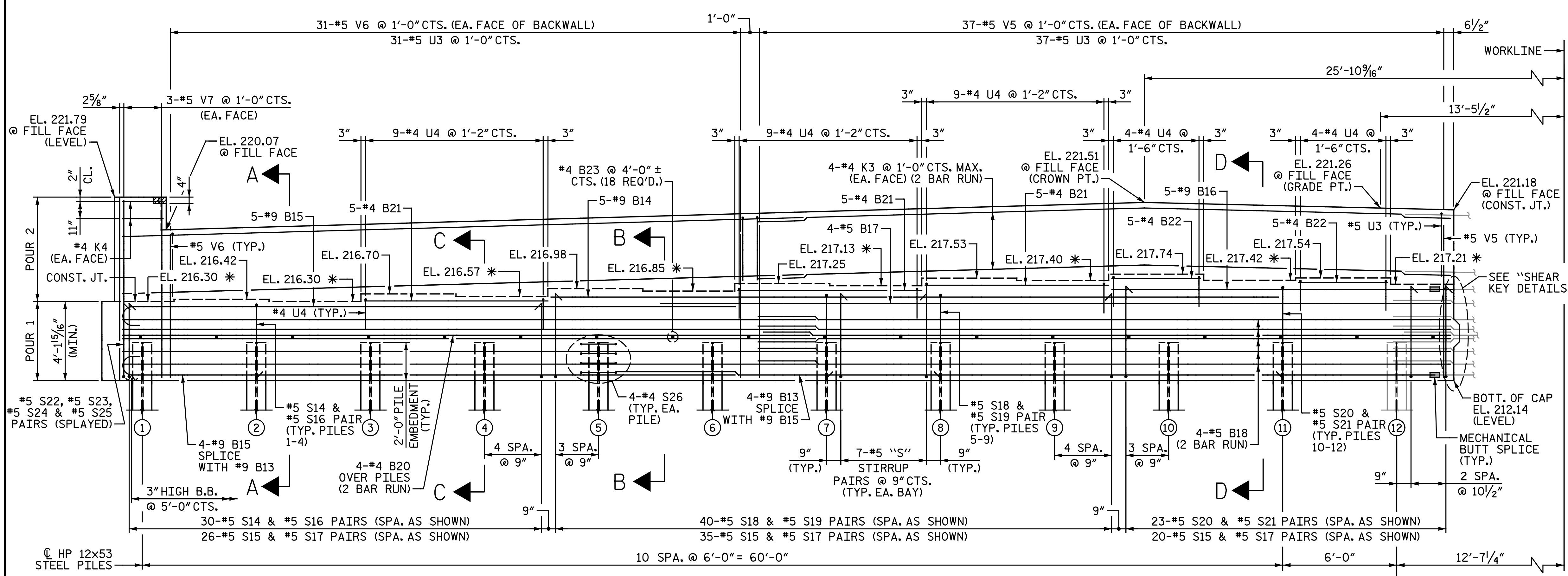


PLAN - STAGE II



ELEVATION - STAGE II

*FOR LOCATION OF ELEVATIONS BETWEEN BRIDGE SEAT BUILD-UPS, SEE "SECTION A-A" ON "END BENT 1 DETAILS" SHEET.

NOTES:

FOR "BEAM SEAT DETAILS", SEE "END BENT 1 STAGE I" SHEET.

FOR "SECTION A-A", "PARTIAL SECTION B-B", "PARTIAL SECTION C-C", AND "PARTIAL SECTION D-D", SEE "END BENT 1 DETAILS" SHEET.

STIRRUPS & "U" BARS IN CAP MAY BE SHIFTED AS NECESSARY TO CLEAR ANCHOR BOLTS.

BACKWALL SHALL BE PLACED BEFORE APPLYING THE EPOXY PROTECTIVE COATING.

THE TOP SURFACE AREAS OF THE END BENT CAP SHALL BE CURED IN ACCORDANCE WITH THE STANDARD SPECIFICATIONS EXCEPT THE MEMBRANE CURING COMPOUND METHOD SHALL NOT BE USED.

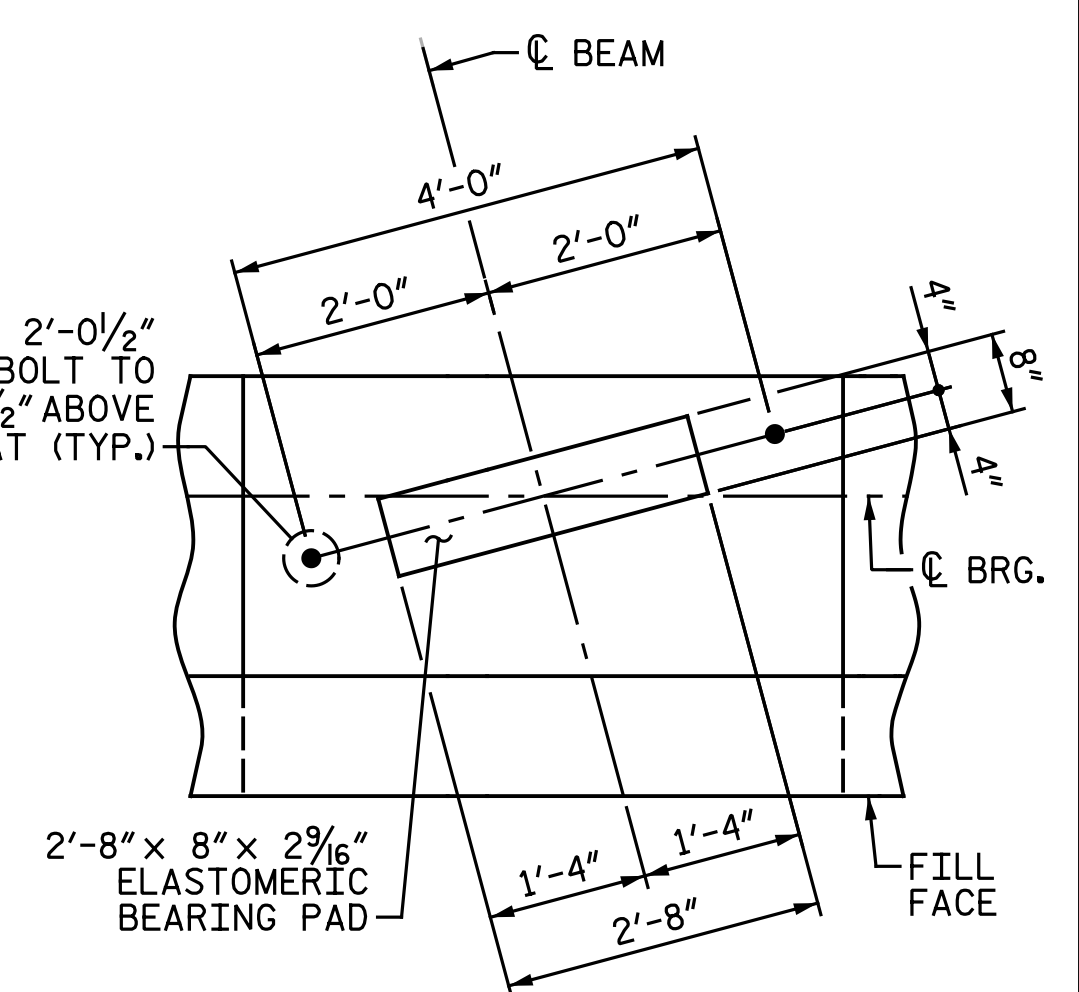
THE TOP SURFACE OF THE CAP EXCEPT THE BRIDGE SEAT BUILD-UPS SHALL BE SLOPED TRANSVERSELY FROM THE FILL FACE TO THE BACK FACE AT A RATE OF 2%.

THE CONCRETE IN THE HATCHED AREA OF THE WING SHALL BE POURED AFTER THE BARRIER RAIL IS CAST IF SLIP FORMING IS USED.

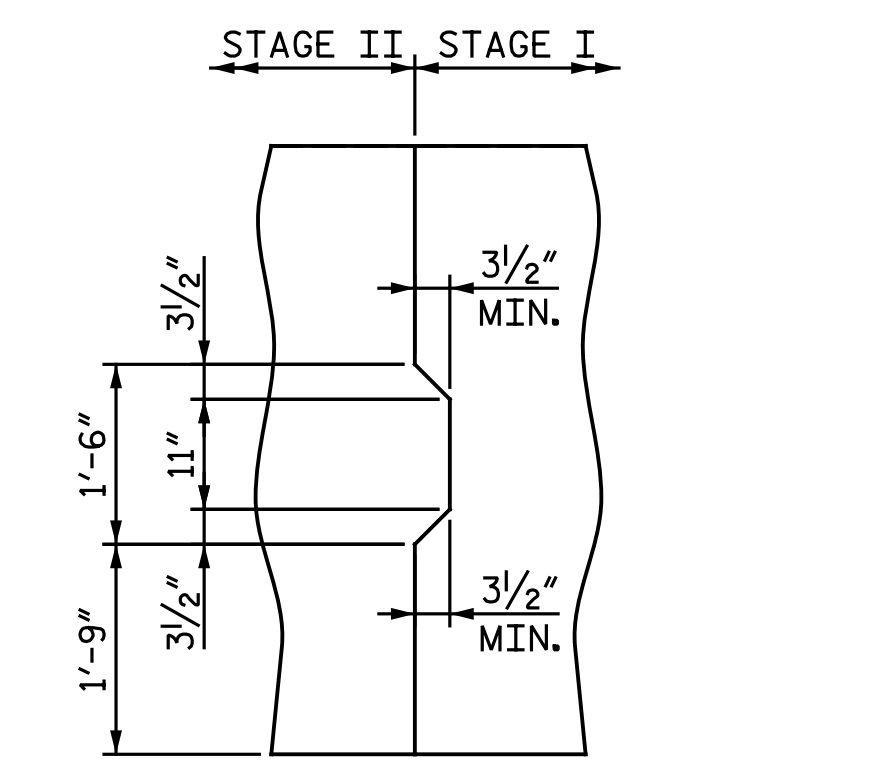
FOR MSE RETAINING WALLS, SEE SPECIAL PROVISIONS.

FOR LOCATION & DETAILS OF MSE RETAINING WALLS AND PILE SLEEVES, SEE MSE RETAINING WALL PLANS.

LENGTH OF CAP SHALL BE FIELD ADJUSTED AS REQUIRED TO PROVIDE 1" EXPANSION JOINT MATERIAL AS SHOWN BETWEEN THE CAP AND MSE WALL COPING.



DETAIL "A"
(TYP. EA. BRIDGE SEAT)



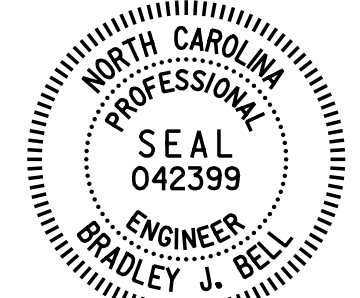
SHEAR KEY DETAILS

PROJECT NO. I-5878
HARNETT COUNTY
 STATION: 1002+79.68 -LREV-

SHEET 2 OF 3

MIN. SPLICE LENGTHS	
BAR SIZE	UNCOATED
#4	2'-5"
#5	3'-0"
#9	6'-3"

DRAWN BY: M. D. MAYHEW DATE: 8-20-19
 CHECKED BY: B. J. BELL DATE: 9-17-19



Designed by:
 4/22/2021

DOCUMENT NOT CONSIDERED FINAL
 UNLESS ALL SIGNATURES COMPLETED

Michael Baker
 INTERNATIONAL

Michael Baker Engineering
 8000 Regency Parkway, Suite 600
 Cary, North Carolina 27518
 NC License No.: F-1084

STATE OF NORTH CAROLINA
 DEPARTMENT OF TRANSPORTATION
 RALEIGH
 SUBSTRUCTURE
 END BENT 1
 STAGE II

REVISIONS						SHEET NO. S2-25
NO.	BY:	DATE:	NO.	BY:	DATE:	
1			3			TOTAL SHEETS
2			4			34