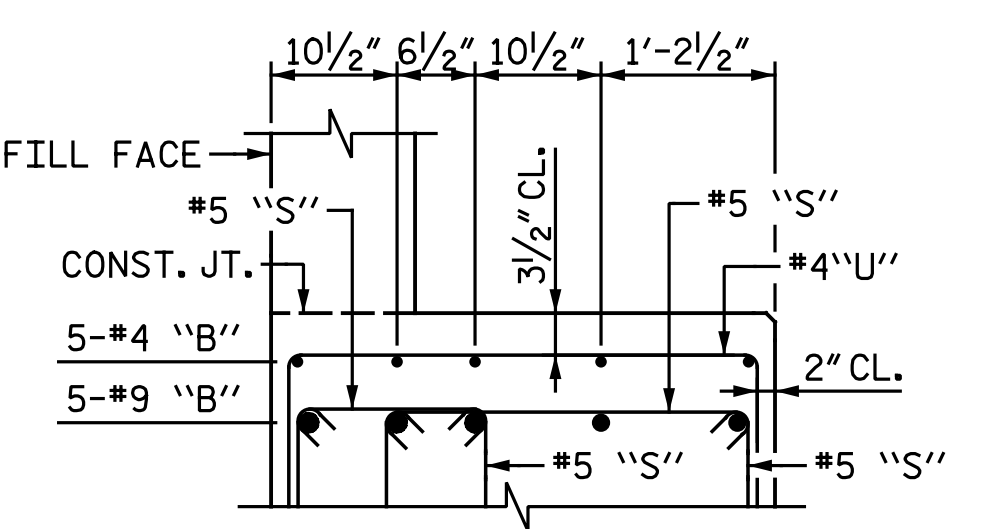
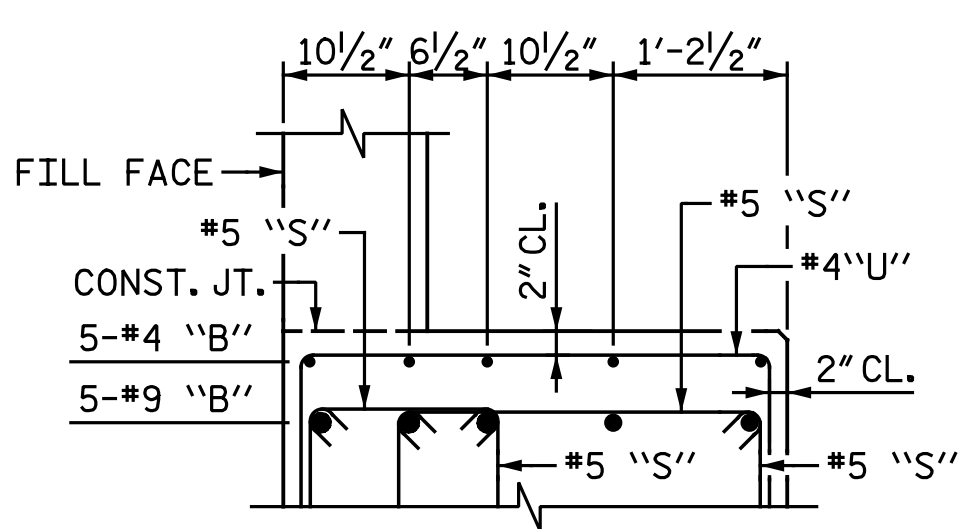


STAGE II PILE TO BE DRIVEN WITH STAGE I PILES

\* FOR LOCATION OF ELEVATIONS BETWEEN BRIDGE SEAT BUILD-UPS, SEE "SECTION A-A" ON "END BENT 1 DETAILS" SHEET.

MIN. SPLICE LENGTHS	
BAR SIZE	UNCOATED
#4	2'-5"
#5	3'-0"
#9	6'-3"



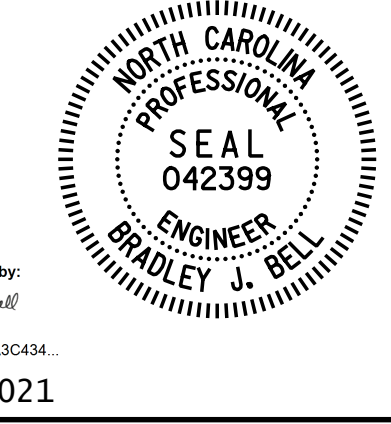
**NOTES:**

FOR NOTES, SEE "END BENT 1 STAGE II" SHEET.

FOR "DETAIL A", SEE "END BENT 1 STAGE II" SHEET.

FOR "SHEAR KEY DETAILS", SEE "END BENT 1 STAGE II" SHEET.

FOR STAGE II BEAM SEAT LOCATIONS, SEE "END BENT 1 STAGE II" SHEET.



PROJECT NO. I-5878

HARNETT COUNTY

STATION: 1002+79.68 -LREV-

SHEET 1 OF 3

STATE OF NORTH CAROLINA  
DEPARTMENT OF TRANSPORTATION  
RALEIGH

**SUBSTRUCTURE**

**END BENT 1**

**STAGE I**

DOCUMENT NOT CONSIDERED FINAL  
UNLESS ALL SIGNATURES COMPLETED

NO.	BY:	DATE:	REVISIONS		SHEET NO.
			NO.	DATE:	
1			3		S2-24 TOTAL SHEETS 34
2			4		

DRAWN BY: M. D. MAYHEW DATE: 8-20-19

CHECKED BY: B. J. BELL DATE: 8-28-19

**Michael Baker International**

Michael Baker Engineering  
8000 Regency Parkway, Suite 600  
Cary, North Carolina 27518  
NC License No.: F-1084