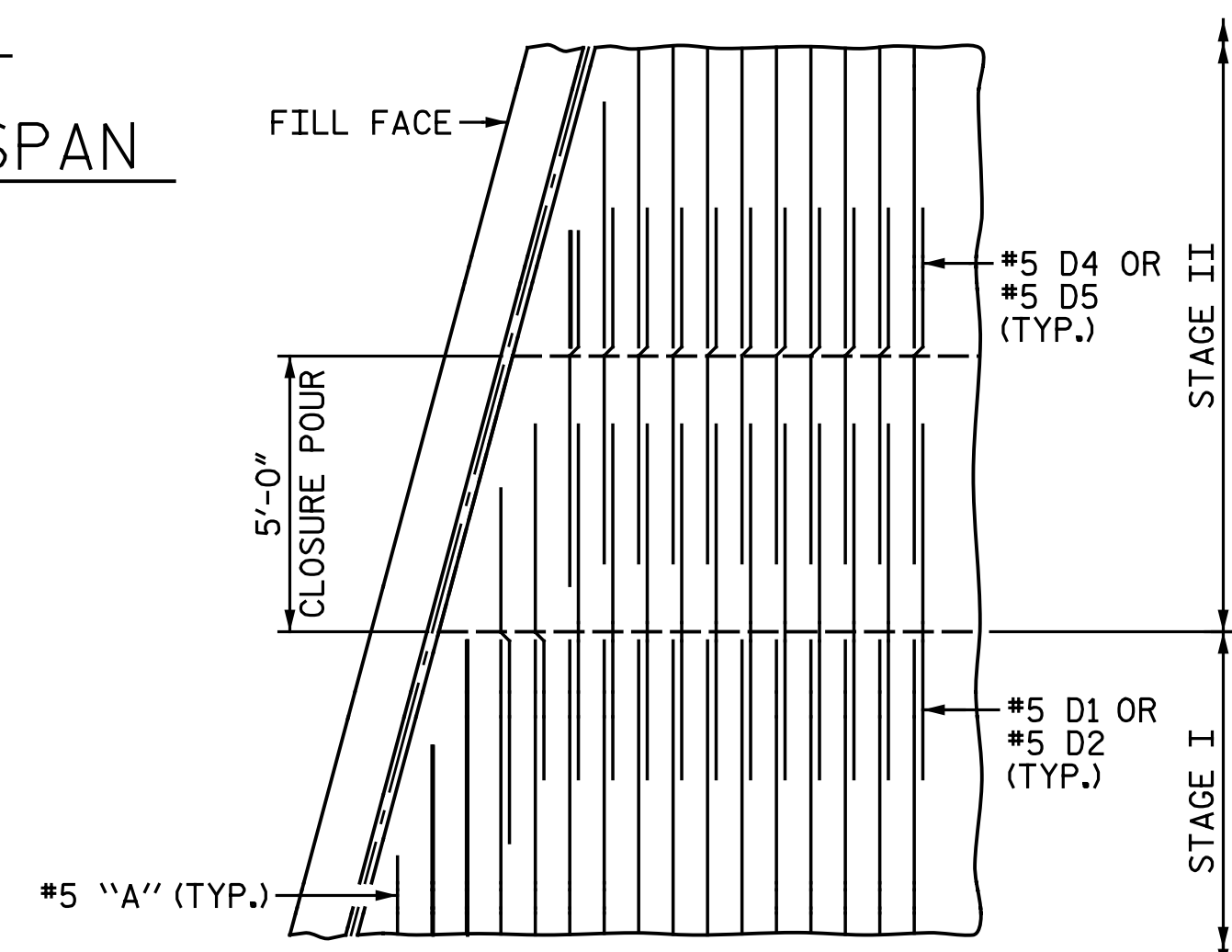


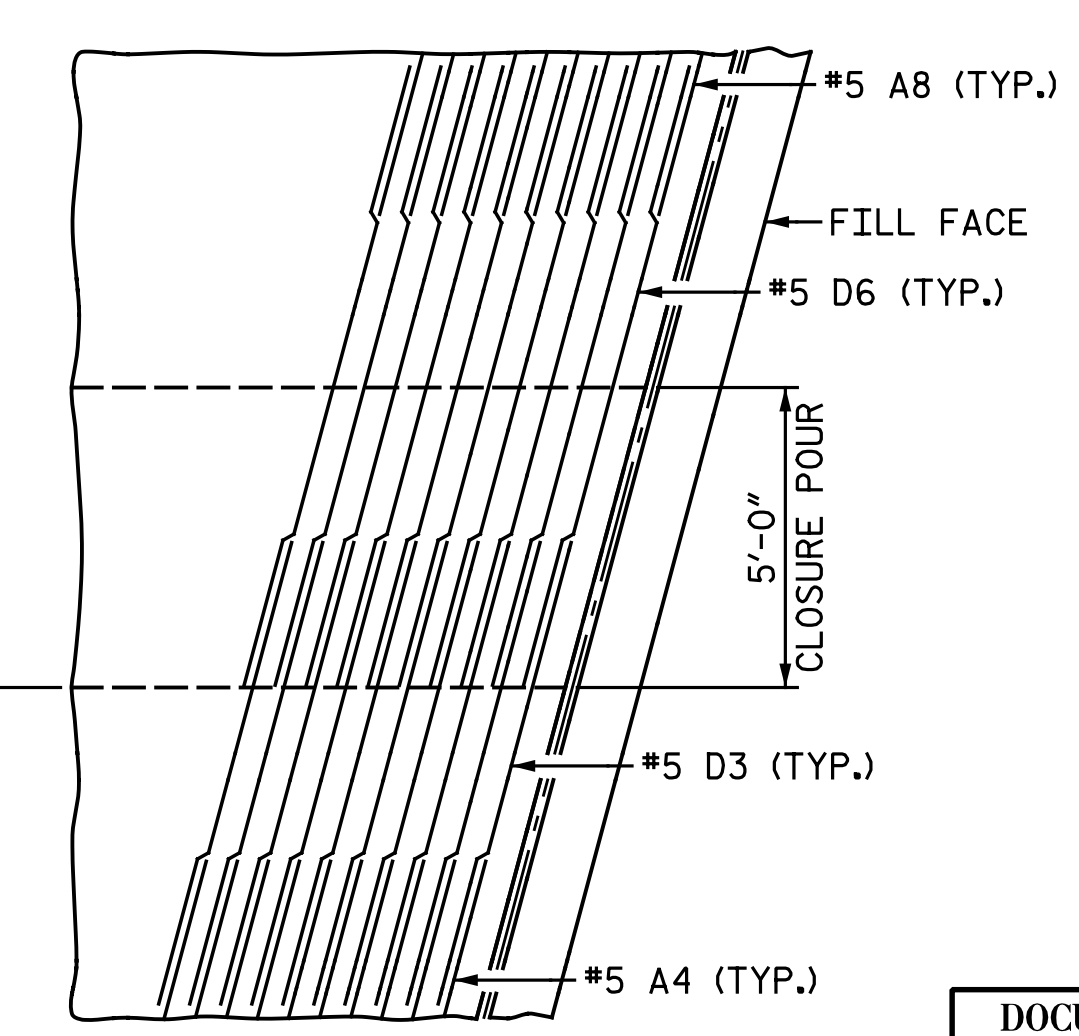
SPAN A
PLAN OF SPAN

* #5 A8 BARS TO BE PLACED PARALLEL TO SKEW & BELOW B3 BARS

SPlice LENGTHS		
BAR SIZE	EPOXY COATED	UNCOATED
#4	2'-0"	1'-9"
#5	2'-6"	2'-2"



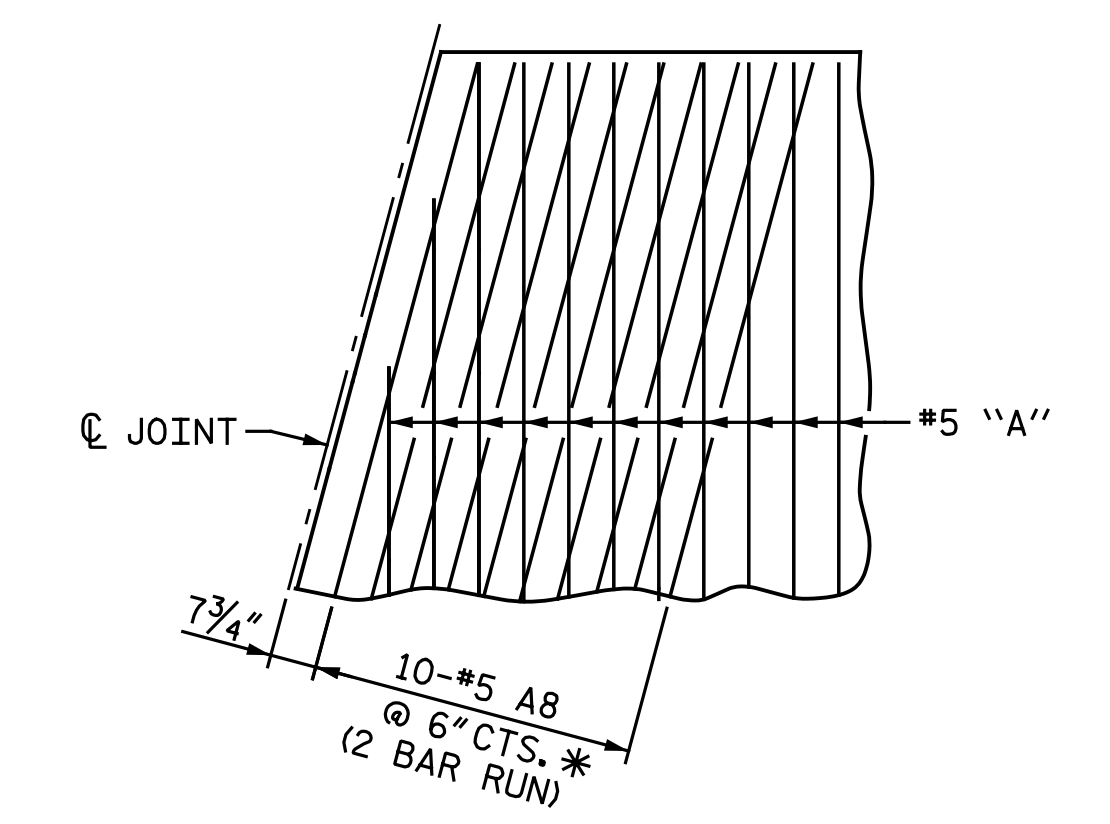
ONLY TRANSVERSE #5 "A" DECK BARS & #5 "D" DOWELS SHOWN. LAYOUT AT END BENT 2 SIMILAR.



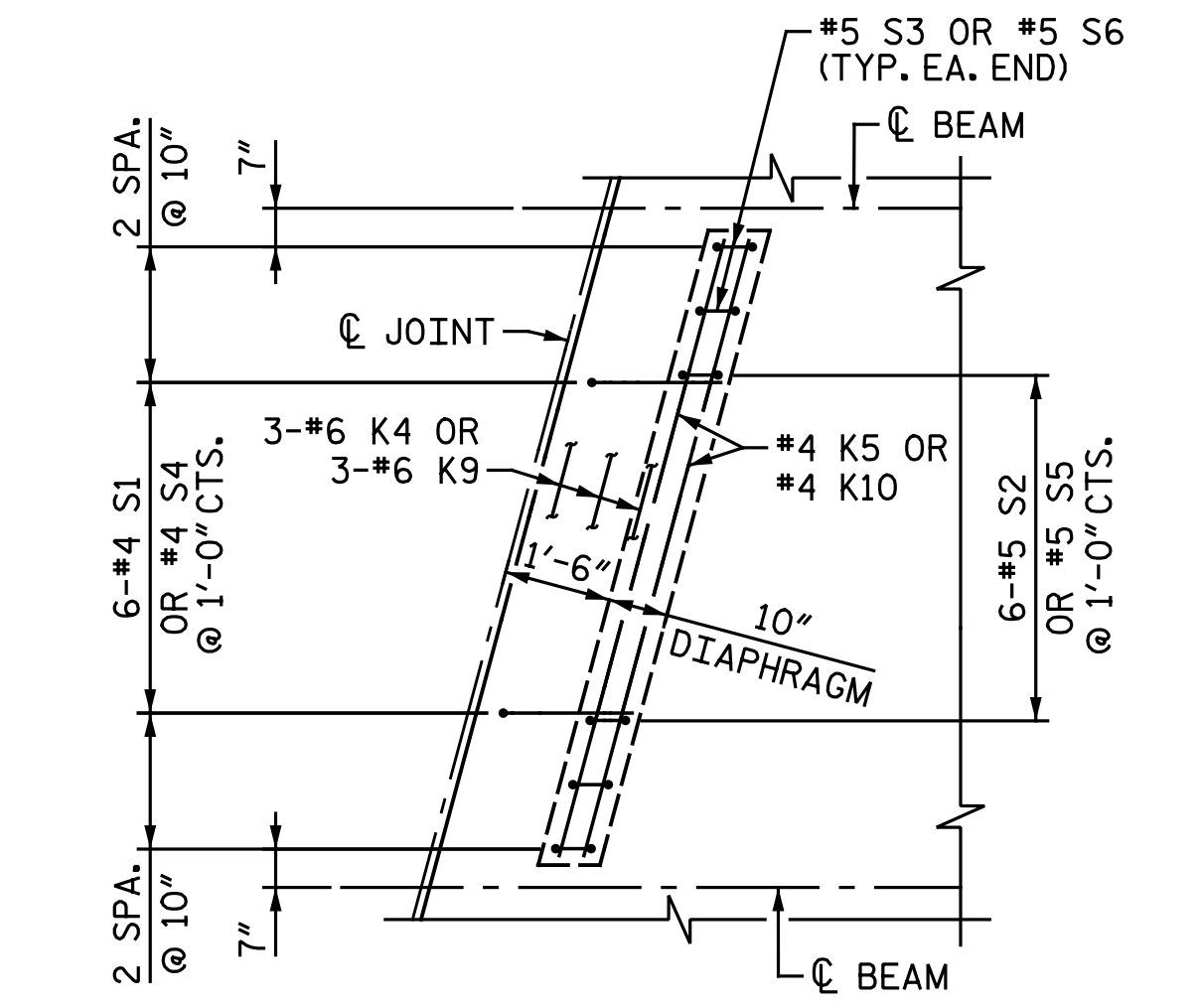
ONLY SKEWED #5 "A" DECK BARS & #5 "D" DOWELS SHOWN. LAYOUT AT END BENT 1 SIMILAR.

DETAIL "D"

NOTES:
 FOR REINFORCING STEEL IN CONCRETE BARRIER RAIL, SEE "CONCRETE BARRIER RAIL" SHEETS.
 FOR DECK POURING SEQUENCE AND LOCATION OF TRANSVERSE CONSTRUCTION JOINTS, SEE "BILL OF MATERIAL STAGE II" SHEET.
 FOR "TRANSVERSE CONSTRUCTION JOINT DETAIL", SEE "PLAN OF SPAN A STAGE I" SHEET.
 FOR "CLOSURE POUR DETAILS", SEE "TYPICAL SECTION STAGE II" SHEET.



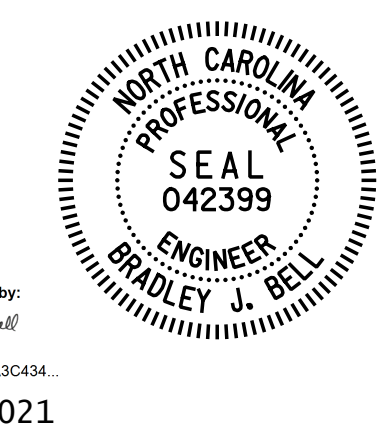
DETAIL "C"
 END BENT 1 SHOWN, END BENT 2 SIMILAR. ADDITIONAL REINFORCEMENT NOT SHOWN FOR CLARITY.



END BENT DIAPHRAGM DETAIL

END BENT 1 SHOWN, END BENT 2 SIMILAR. "K" BARS OVER BEAMS NOT SHOWN FOR CLARITY. (TYP. EA. BAY)

PROJECT NO. I-5878
HARNETT COUNTY
 STATION: 1002+79.68 -LREV-
 SHEET 2 OF 2



Designed by: *[Signature]*
 4/22/2021

DOCUMENT NOT CONSIDERED FINAL UNLESS ALL SIGNATURES COMPLETED

NO.	BY:	DATE:	REVISIONS			SHEET NO.
			NO.	BY:	DATE:	
1			3			S2-9 TOTAL SHEETS 34
2			4			

DRAWN BY: M. D. MAYHEW DATE: 7-22-19
 CHECKED BY: B. J. BELL DATE: 9-24-19

Michael Baker International
 Michael Baker Engineering
 8000 Regency Parkway, Suite 600
 Cary, North Carolina 27518
 NC License No.: F-1084