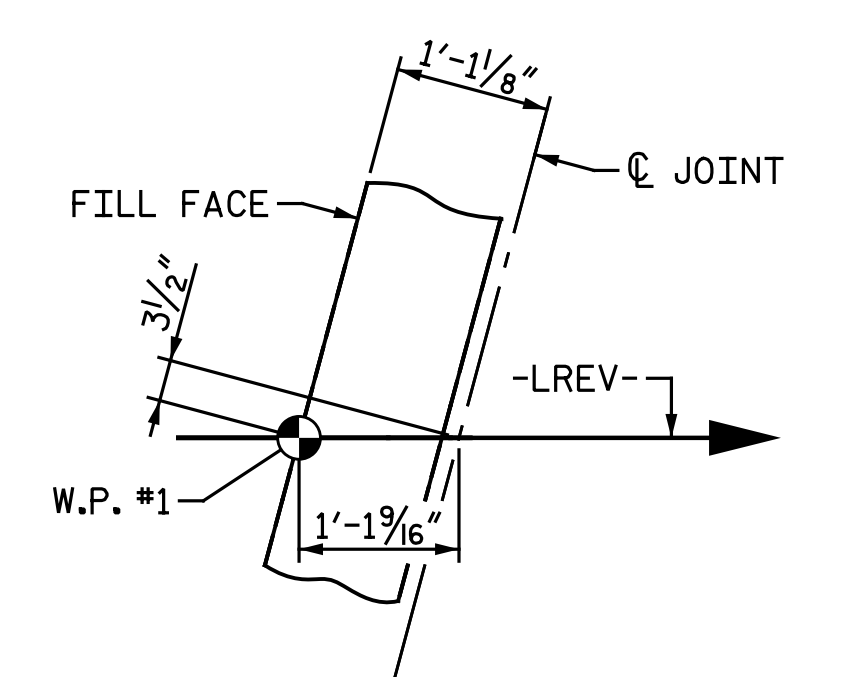
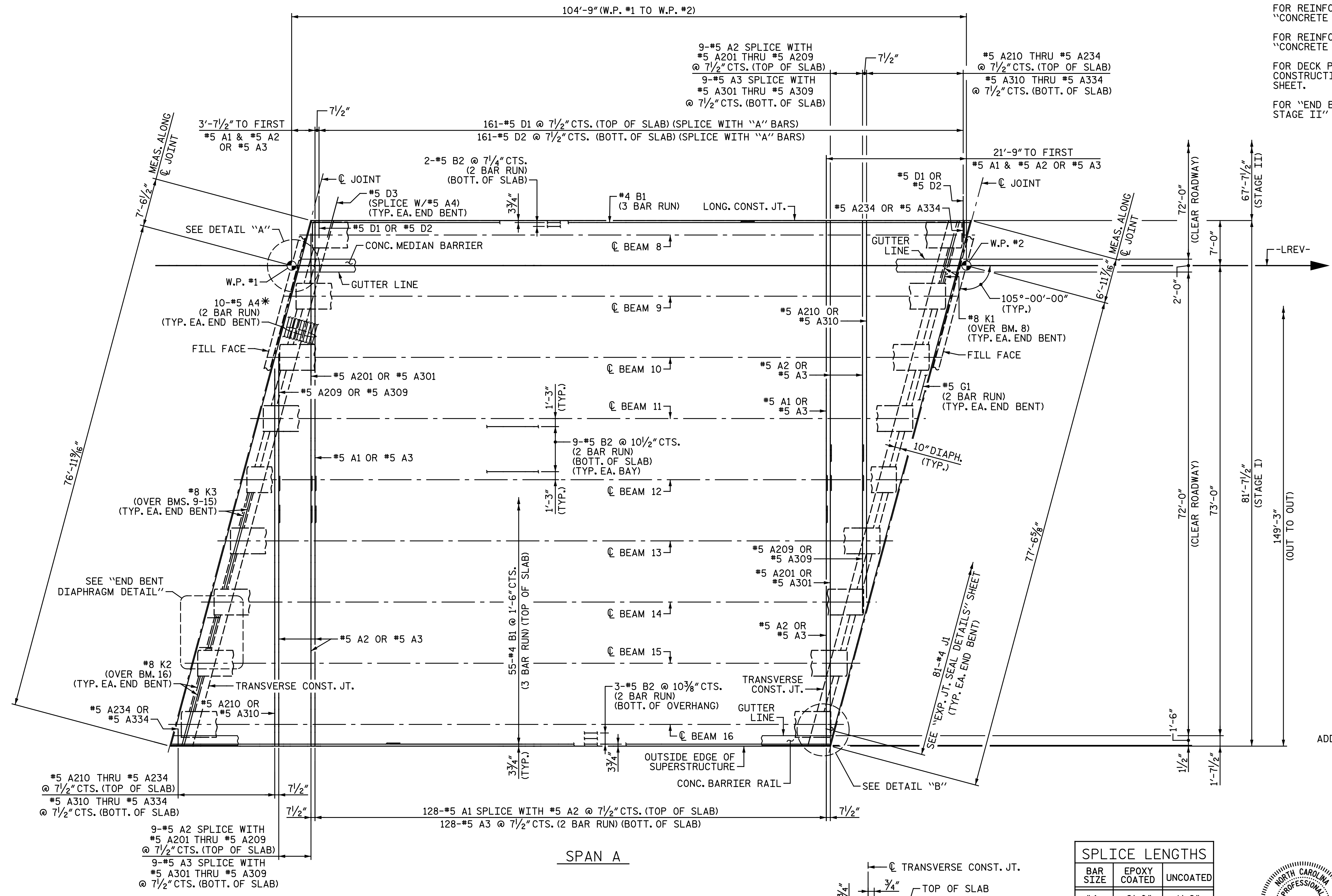
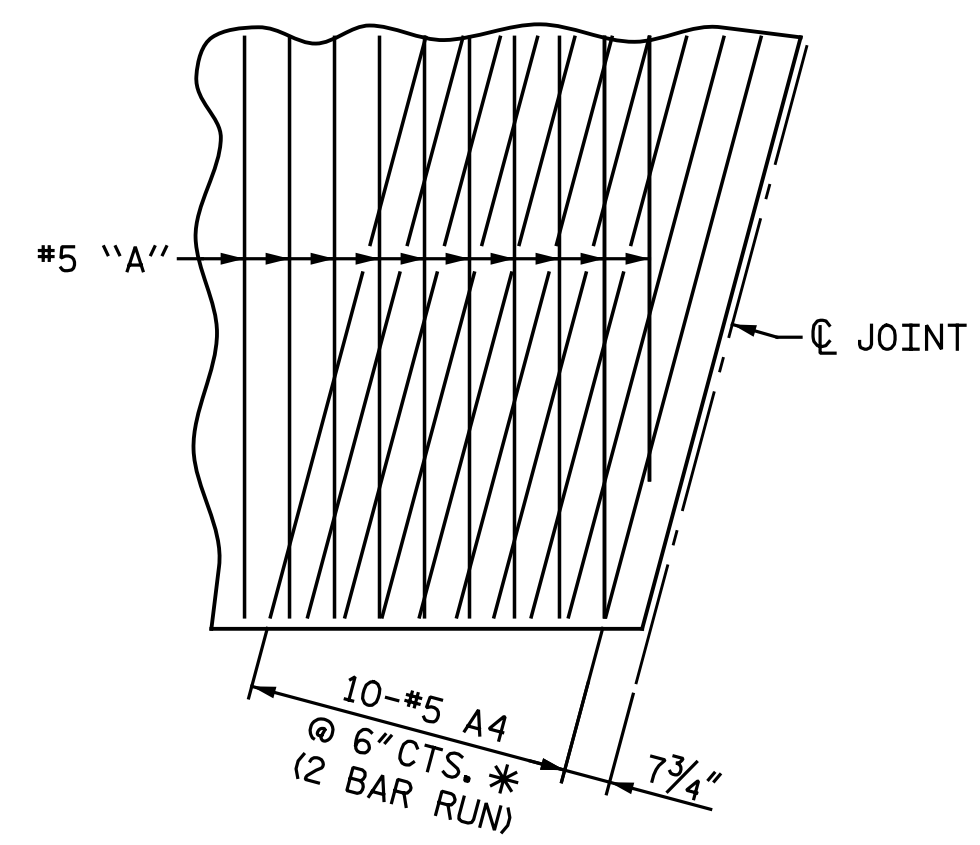


**NOTES:**  
 FOR REINFORCING STEEL IN CONCRETE BARRIER RAIL, SEE "CONCRETE BARRIER RAIL" SHEETS.  
 FOR REINFORCING STEEL IN CONCRETE MEDIAN BARRIER, SEE "CONCRETE MEDIAN BARRIER" SHEET.  
 FOR DECK POURING SEQUENCE AND LOCATION OF TRANSVERSE CONSTRUCTION JOINTS, SEE "BILL OF MATERIAL STAGE I" SHEET.  
 FOR "END BENT DIAPHRAGM DETAIL", SEE "PLAN OF SPAN A STAGE II" SHEET.

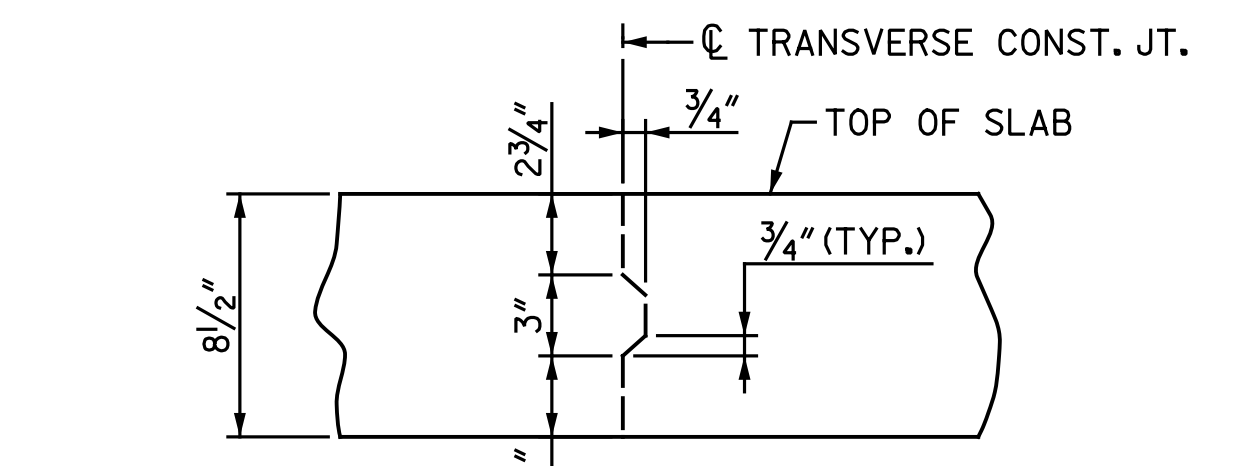


DETAIL "A"  
SIMILAR AT W.P. #2



DETAIL "B"  
END BENT 2 SHOWN, END BENT 1 SIMILAR. ADDITIONAL REINFORCEMENT NOT SHOWN FOR CLARITY.

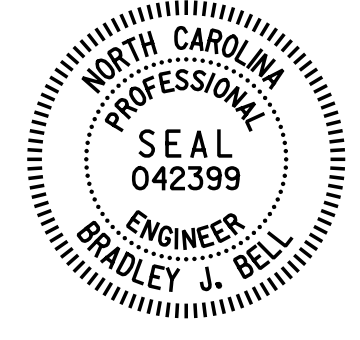
PLAN OF SPAN



TRANSVERSE CONST. JT. DETAIL

REINFORCING STEEL IN SLAB NOT SHOWN. REINFORCING STEEL SHALL BE CONTINUOUS THROUGH JOINT.

SPLICE LENGTHS		
BAR SIZE	EPOXY COATED	UNCOATED
#4	2'-0"	1'-9"
#5	2'-6"	2'-2"



Designed by: [Signature]  
 4/22/2021

DOCUMENT NOT CONSIDERED FINAL UNLESS ALL SIGNATURES COMPLETED

<b>Michael Baker International</b>		Michael Baker Engineering 8000 Regency Parkway, Suite 600 Cary, North Carolina 27518 NC License No.: F-1084	
REVISIONS			
NO.	BY:	DATE:	DESCRIPTION:
1			
2			
SHEET NO. S2-8			
TOTAL SHEETS 34			

PROJECT NO. I-5878  
 HARNETT COUNTY  
 STATION: 1002+79.68 -LREV-

STATE OF NORTH CAROLINA  
 DEPARTMENT OF TRANSPORTATION  
 RALEIGH  
 SUPERSTRUCTURE  
 PLAN OF SPAN A  
 STAGE I

DRAWN BY: M. D. MAYHEW DATE: 6-25-19  
 CHECKED BY: B. J. BELL DATE: 8-3-19

\* #5 A4 BARS TO BE PLACED PARALLEL TO SKEW & BELOW B1 BARS