

AT INTERMEDIATE DIAPHRAGM

AT END BENT DIAPHRAGM

TYPICAL SECTION - STAGE I

NOTES:

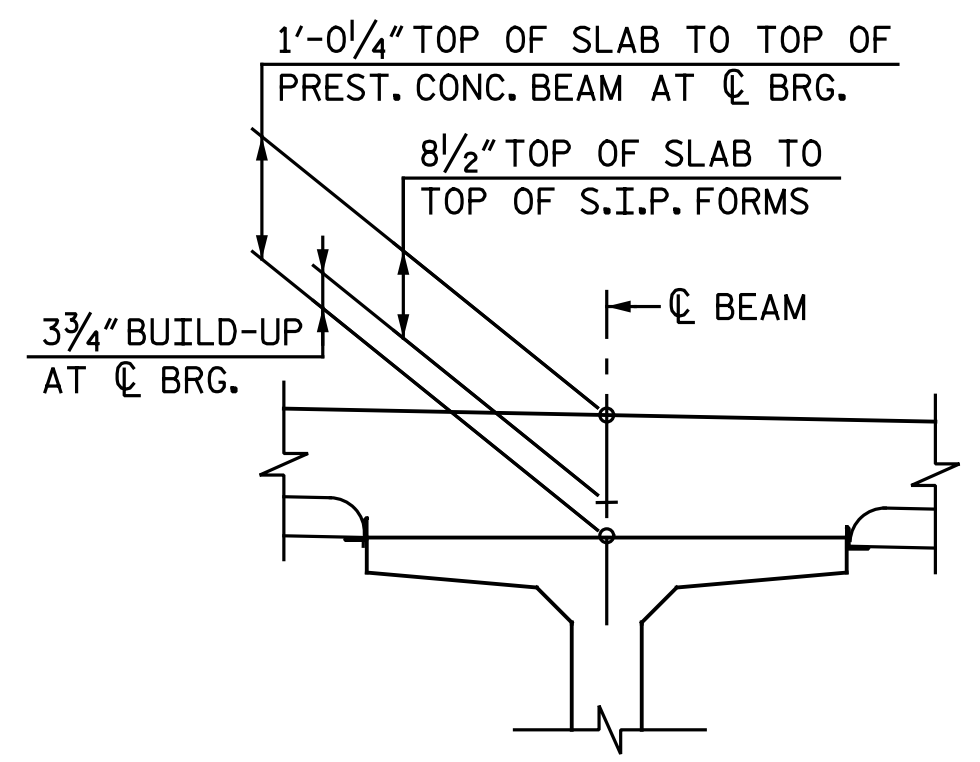
PROVIDE 1/4" HIGH BEAM BOLSTERS UPPER AT 4'-0" CTS. ATOP THE METAL STAY-IN-PLACE FORMS TO SUPPORT THE BOTTOM MAT OF "A" BARS. WHEN USING REMOVABLE FORMS, PROVIDE CONTINUOUS HIGH CHAIRS FOR METAL DECK (C.H.C.M.) @ 4'-0" CTS. WITH A HEIGHT TO SUPPORT THE BOTTOM MAT OF "A" BARS A CLEAR DISTANCE OF 2 1/2" ABOVE THE TOP OF THE REMOVABLE FORM.

LONGITUDINAL STEEL MAY BE SHIFTED SLIGHTLY, AS NECESSARY, TO AVOID INTERFERENCE WITH STIRRUPS IN PRESTRESSED CONCRETE BEAMS AND TO FACILITATE INSTALLATION OF CONCRETE BARRIER RAIL AND CONCRETE MEDIAN BARRIER REINFORCEMENT.

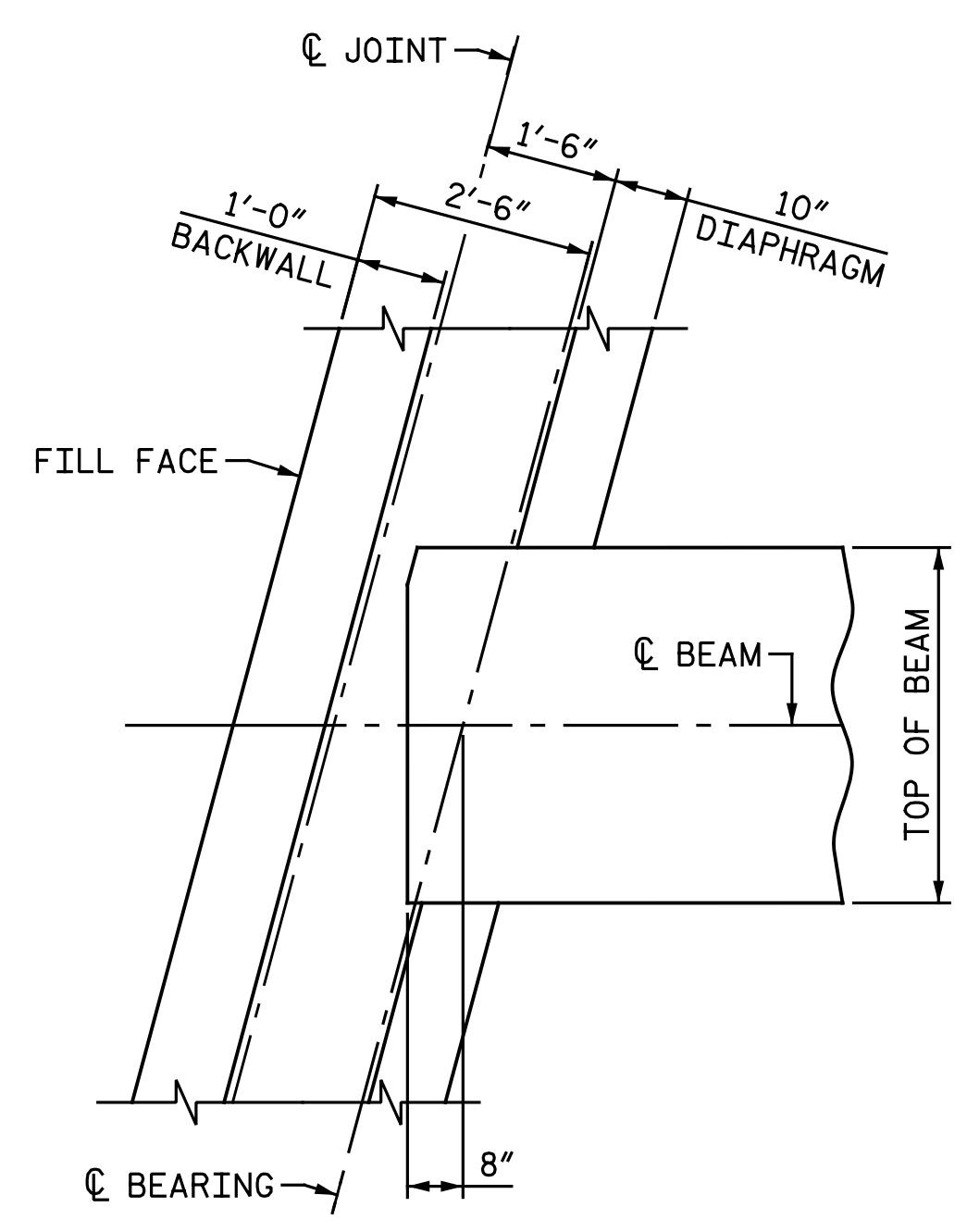
PREVIOUSLY CAST CONCRETE IN THE SPAN SHALL HAVE ATTAINED A MINIMUM COMPRESSIVE STRENGTH OF 3,000 PSI BEFORE ADDITIONAL CONCRETE IS CAST IN THE SPAN.

FOR CONCRETE BARRIER RAIL DETAILS, SEE "CONCRETE BARRIER RAIL" SHEETS.

FOR CONCRETE MEDIAN BARRIER DETAILS, SEE "CONCRETE MEDIAN BARRIER" SHEET.

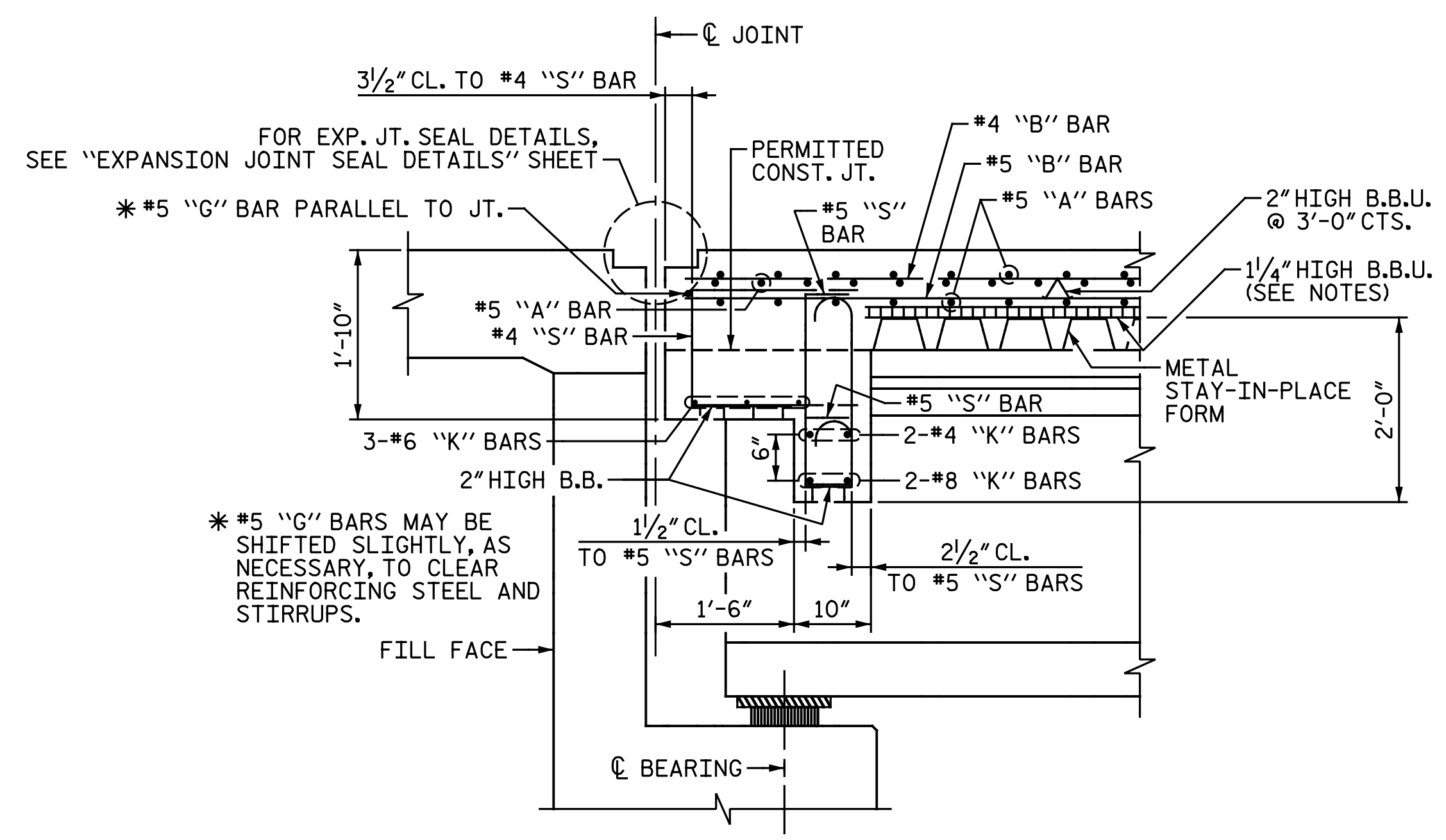


DETAIL "A"



PLAN AT END BENT DIAPHRAGM

END BENT 1 SHOWN, END BENT 2 SIMILAR



SECTION THRU END BENT DIAPHRAGM

END BENT 1 SHOWN, END BENT 2 SIMILAR

PROJECT NO. I-5878
 HARNETT COUNTY
 STATION: 1002+79.68 -LREV-

SHEET 1 OF 2



Designed by: *[Signature]*
 4/22/2021

DOCUMENT NOT CONSIDERED FINAL UNLESS ALL SIGNATURES COMPLETED

Michael Baker International
 Michael Baker Engineering
 8000 Regency Parkway, Suite 600
 Cary, North Carolina 27518
 NC License No.: F-1084

STATE OF NORTH CAROLINA
 DEPARTMENT OF TRANSPORTATION
 RALEIGH
 SUPERSTRUCTURE
 TYPICAL SECTION
 STAGE I

REVISIONS						SHEET NO. S2-6
NO.	BY:	DATE:	NO.	BY:	DATE:	
1			3			TOTAL SHEETS 34
2			4			

DRAWN BY: M. D. MAYHEW DATE: 6-25-19
 CHECKED BY: B. J. BELL DATE: 9-24-19