

PLAN @ END BENT 1

PLAN @ END BENT 2

* MEASURED NORMAL TO OUTSIDE EDGE OF APPROACH SLAB

NOTES

FOR BRIDGE APPROACH FILL INCLUDING GEOTEXTILE, MSE WALL REINFORCEMENT AND BACKFILL MATERIAL SEE ROADWAY PLANS.

GEOTEXTILE SHALL BE TYPE 1 IN ACCORDANCE WITH THE STANDARD SPECIFICATIONS SECTION 1056.

BACKFILL MATERIAL SHALL BE THE SAME MATERIAL USED IN THE MSE REINFORCED ZONE.

APPROACH SLAB SHALL NOT BE CONSTRUCTED PRIOR TO COMPLETION OF THE BRIDGE DECK.

THE JOINT SHALL BE SAWS PRIOR TO THE CASTING OF THE SIDEWALK OR PARAPET AND END POST.

AREA BETWEEN THE WINGWALL AND APPROACH SLAB SHALL BE GRADED TO DRAIN THE WATER AWAY FROM THE FILL FACE OF THE BRIDGE AND SHALL BE PAVED. SEE ROADWAY PLANS.

WITH FOAM JOINT SEAL

FOR FOAM JOINT SEALS, SEE SPECIAL PROVISIONS.

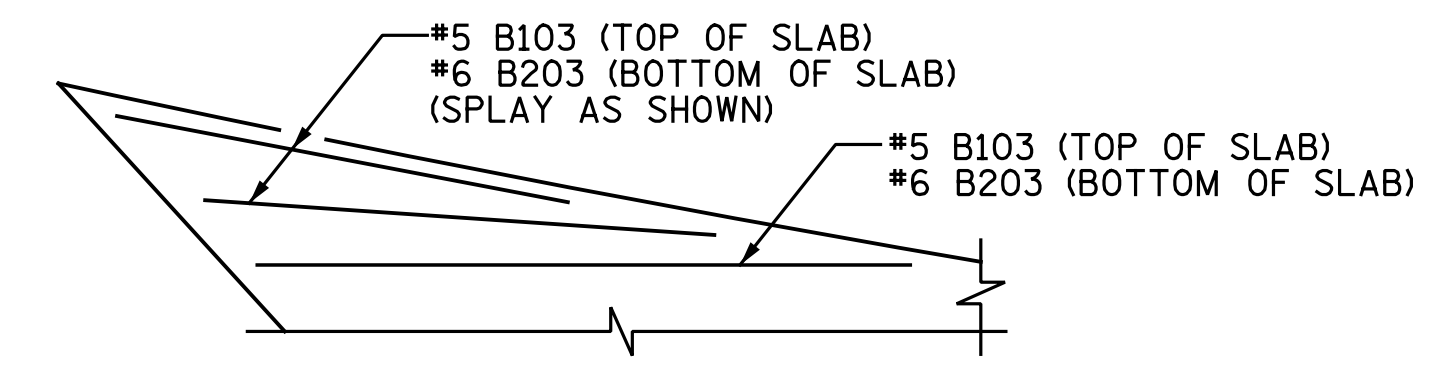
THE NOMINAL UNCOMPRESSED SEAL WIDTH OF THE FOAM JOINT SEAL SHALL BE 2".

FOR ELASTOMERIC CONCRETE, SEE SPECIAL PROVISIONS.

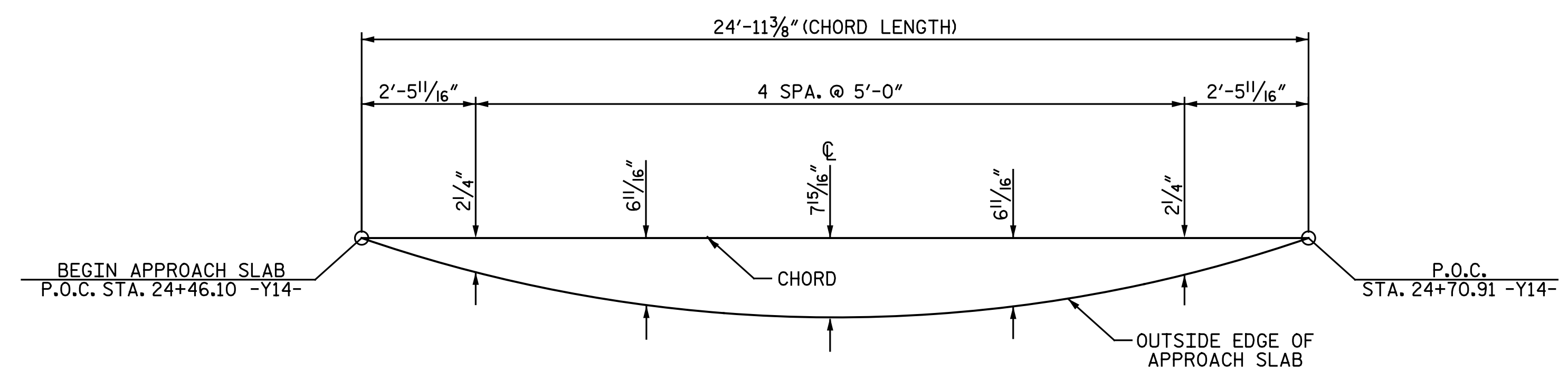
Ⓐ #5 B101 THRU B103 @ 6" CTS. (TOP OF SLAB)
#6 B201 THRU B203 @ 6" CTS. (BOTTOM OF SLAB)

Ⓑ #5 B101 (TOP OF SLAB)
#6 B201 (BOTTOM OF SLAB)

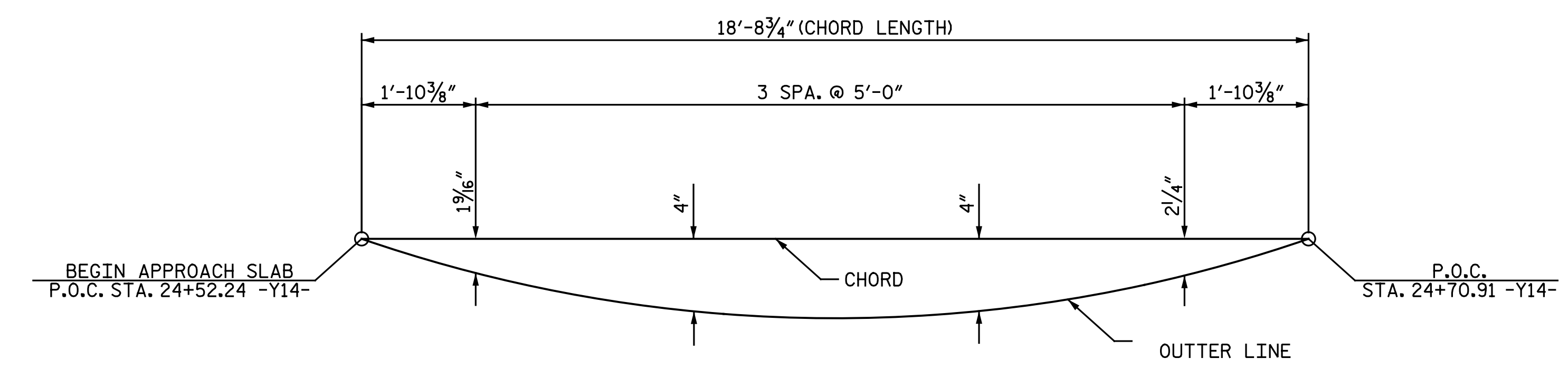
Ⓒ #5 B103 (TOP OF SLAB)
#6 B203 (BOTTOM OF SLAB)



DETAIL "A"



ARC OFFSET-LEFT EDGE OF APPROACH SLAB @ END BENT 1

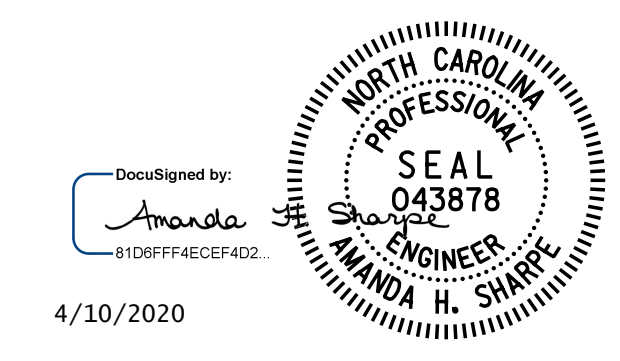


ARC OFFSET-LEFT GUTTERLINE OF APPROACH SLAB @ END BENT 1

SPLICE LENGTHS		
BAR SIZE	EPOXY COATED	UNCOATED
#4	2'-0"	1'-9"

PROJECT NO. I-5878
HARNETT COUNTY
 STATION: 26+05.28 -Y14-

SHEET 1 OF 2



STATE OF NORTH CAROLINA
 DEPARTMENT OF TRANSPORTATION
 RALEIGH

**BRIDGE APPROACH
 SLAB FOR
 FLEXIBLE PAVEMENT**

DOCUMENT NOT CONSIDERED FINAL
 UNLESS ALL SIGNATURES COMPLETED

NO.	BY:	DATE:	REVISIONS		SHEET NO.
			NO.	DATE:	
1			3		SI-33
2			4		TOTAL SHEETS 35

DRAWN BY : N. B. SPEAKS DATE : 6-25-19
 CHECKED BY : A. H. SHARPE DATE : 9-8-19

Michael Baker INTERNATIONAL
 Michael Baker Engineering
 8000 Regency Parkway, Suite 600
 Cary, North Carolina 27518
 NC License No. : F-1084