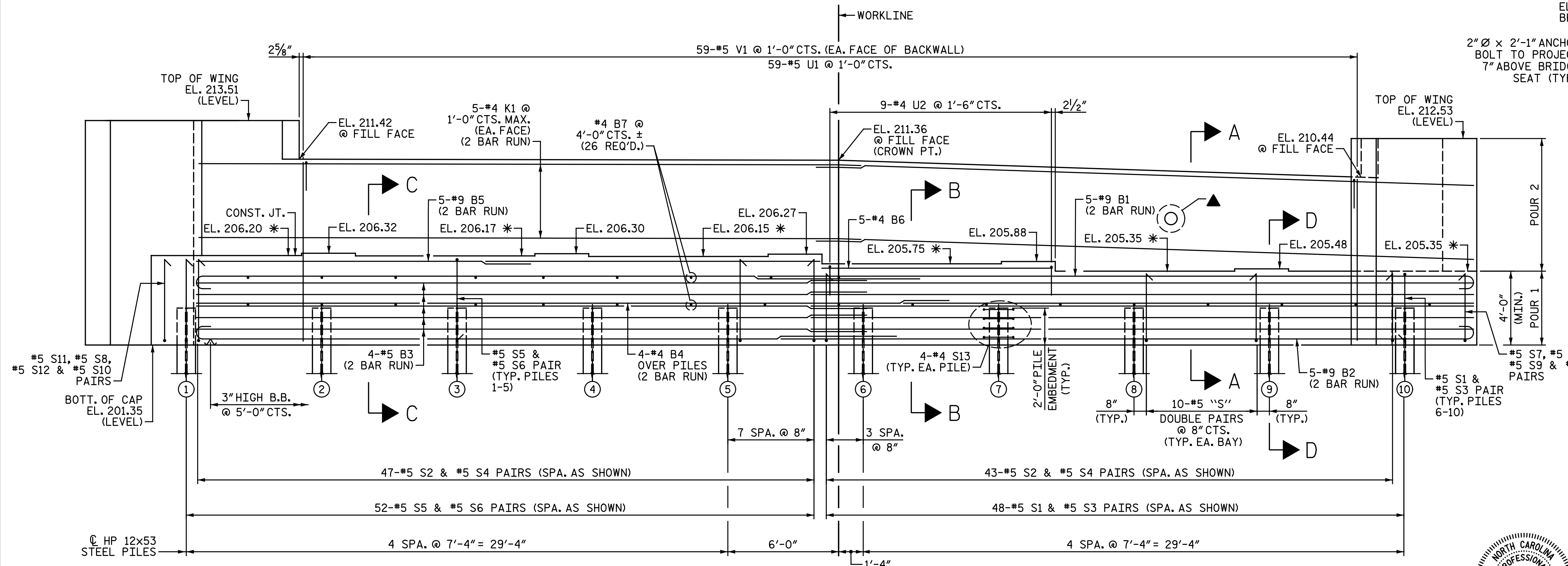


PLAN

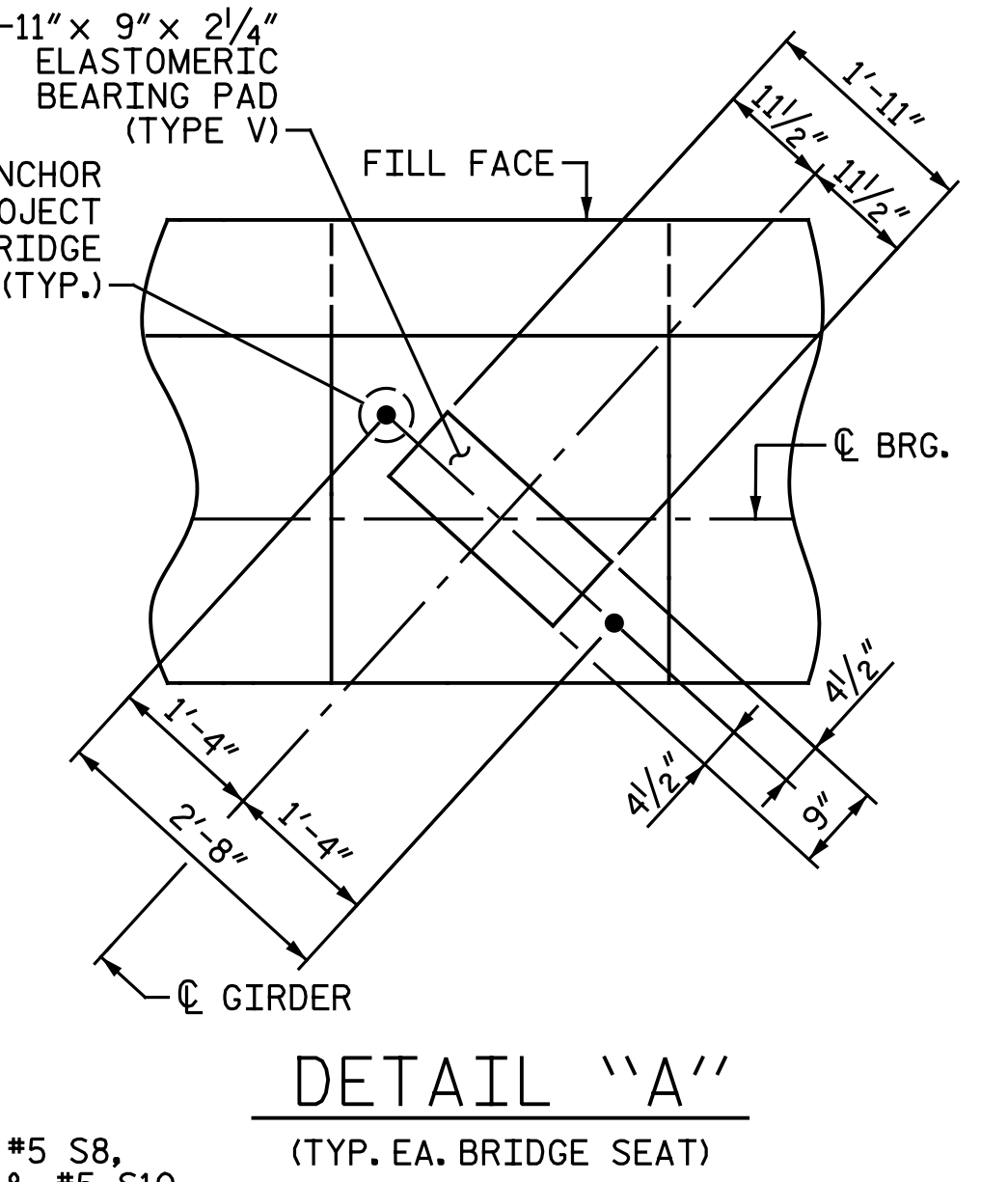
**NOTES:**  
 FOR "SECTION A-A", "PARTIAL SECTION B-B", "PARTIAL SECTION C-C", AND "PARTIAL SECTION D-D", SEE "END BENT 2 DETAILS" SHEET.  
 STIRRUPS & "U" BARS IN CAP MAY BE SHIFTED AS NECESSARY TO CLEAR ANCHOR BOLTS.  
 BACKWALL SHALL BE PLACED BEFORE APPLYING THE EPOXY PROTECTIVE COATING.  
 THE TOP SURFACE AREAS OF THE END BENT CAP SHALL BE CURED IN ACCORDANCE WITH THE STANDARD SPECIFICATIONS EXCEPT THE MEMBRANE CURING COMPOUND METHOD SHALL NOT BE USED.  
 THE TOP SURFACE OF THE CAP EXCEPT THE BRIDGE SEAT BUILDUPS SHALL BE SLOPED TRANSVERSELY FROM THE FILL FACE TO THE BACK FACE AT THE RATE OF 2%.  
 FOR MSE WALLS, SEE SPECIAL PROVISIONS.  
 FOR LOCATION OF MSE WALLS AND PILE SLEEVES, SEE MSE WALL PLANS.  
 LENGTH OF EACH WING SHALL BE FIELD ADJUSTED AS REQUIRED TO PROVIDE 1" EXPANSION JOINT MATERIAL AS SHOWN BETWEEN THIS COMPONENT AND THE MSE WALL COPING.  
 V1 & K1 BARS IN BACKWALL MAY BE SHIFTED AS NECESSARY TO CLEAR CONDUIT OPENING.



ELEVATION

\* FOR LOCATION OF ELEVATIONS BETWEEN BRIDGE SEAT BUILD-UPS, SEE "END BENT 2 DETAILS" SHEET.  
 ▲ CONDUIT OPENING. SEE DETAIL "E" ON "END BENT 1 DETAILS" SHEET.

MIN. SPLICE LENGTHS	
BAR SIZE	UNCOATED
#4	2'-5"
#5	3'-0"
#9 B1 & B5	8'-9"
#9 B2	6'-3"



DETAIL "A"  
(TYP. EA. BRIDGE SEAT)

PROJECT NO. I-5878  
 HARNETT COUNTY  
 STATION: 26+05.28 -Y14-  
 SHEET 1 OF 2



DocuSigned by:  
 Amanda H. Sharpe  
 8150FF46CECF402  
 4/10/2020

DOCUMENT NOT CONSIDERED FINAL  
 UNLESS ALL SIGNATURES COMPLETED

**Michael Baker International**  
 Michael Baker Engineering  
 8000 Regency Parkway, Suite 600  
 Cary, North Carolina 27518  
 NC License No.: F-1084

STATE OF NORTH CAROLINA DEPARTMENT OF TRANSPORTATION RALEIGH					
SUBSTRUCTURE					
END BENT 2					
REVISIONS					
NO.	BY:	DATE:	NO.	BY:	DATE:
1			3		
2			4		

SHEET NO.	SI-28
TOTAL SHEETS	35

DRAWN BY: M. D. MAYHEW DATE: 10-21-19  
 CHECKED BY: A. H. SHARPE DATE: 3-2-20