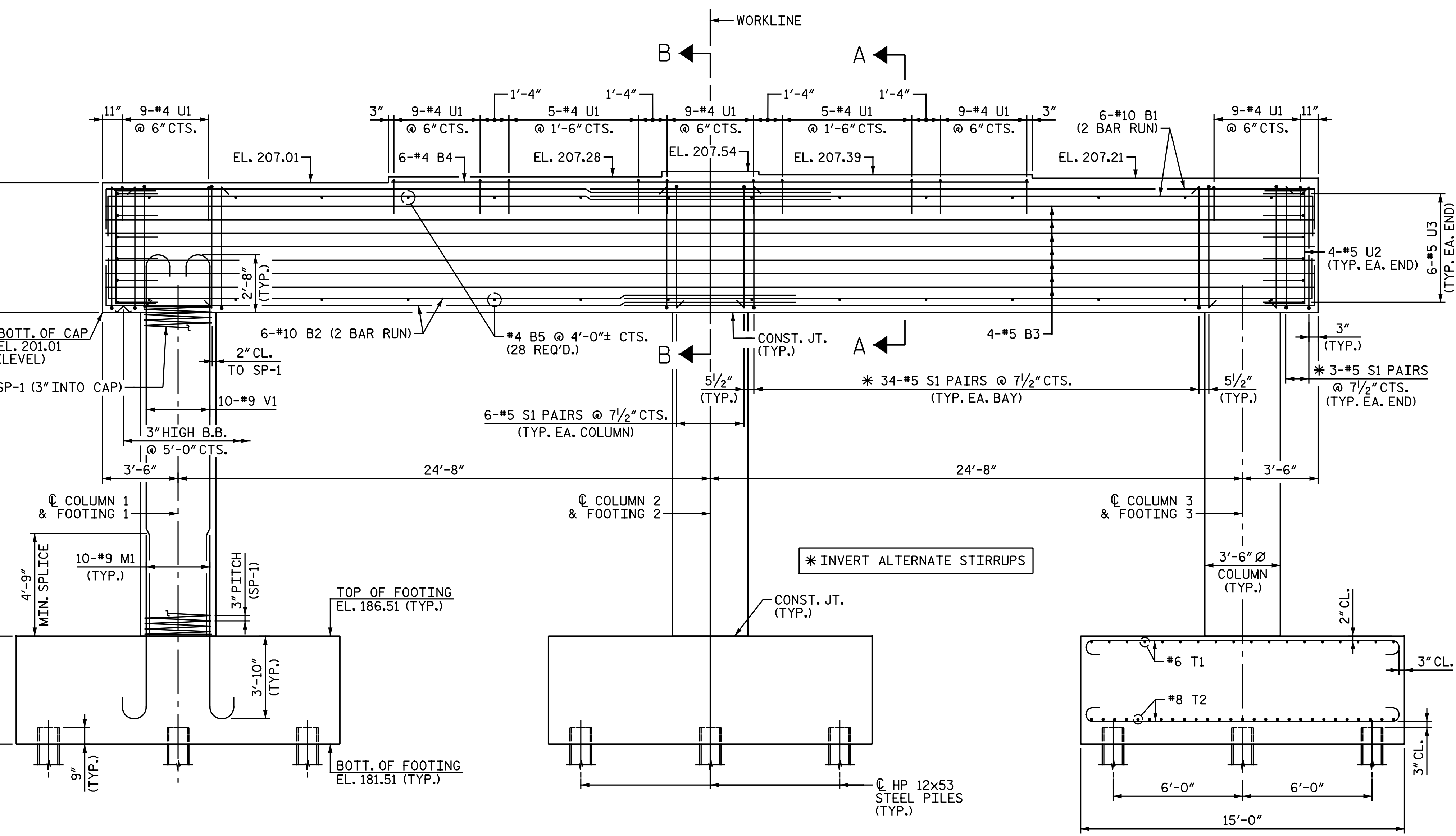
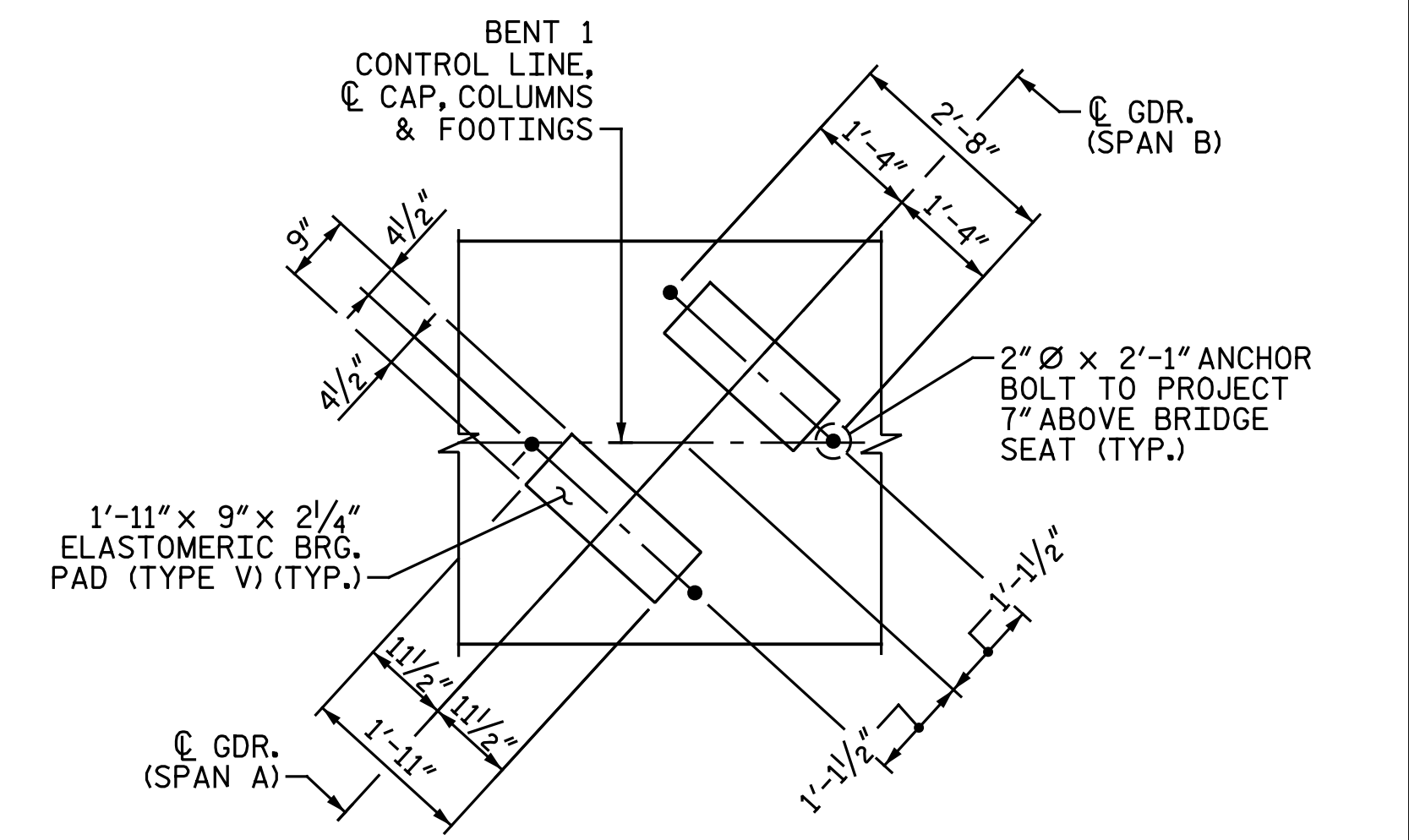


PLAN

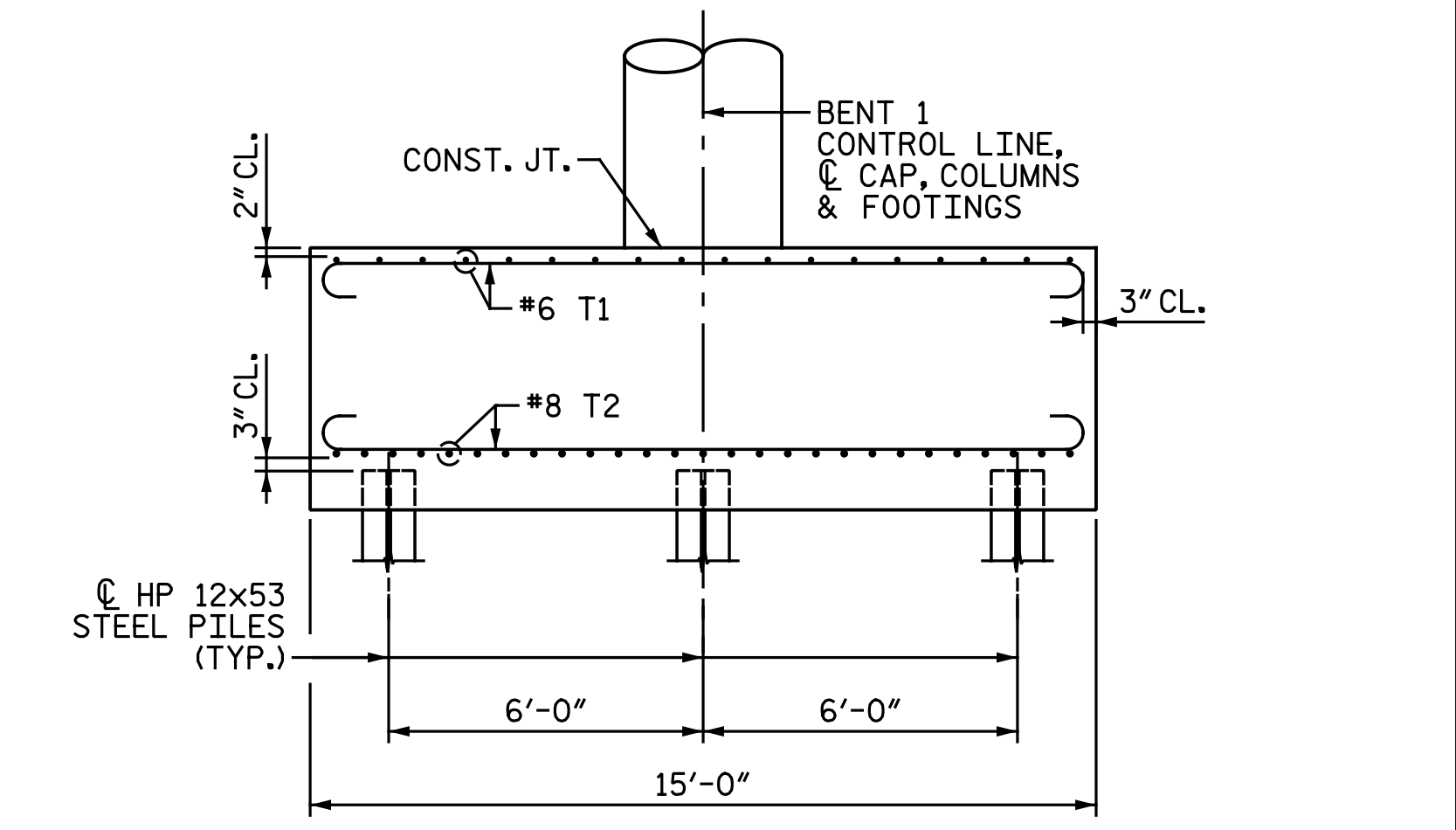


ELEVATION

NOTES:
 STIRRUPS AND "U" BARS IN CAP MAY BE SHIFTED AS NECESSARY TO CLEAR ANCHOR BOLTS AND COLUMN REINFORCING STEEL.
 FOR "SECTION A-A" AND "SECTION B-B", SEE "BENT 1 DETAILS" SHEET.
 FOR "END ELEVATION", SEE "BENT 1 DETAILS" SHEET.
 HOOKS ON "V" BARS MAY BE TURNED AS NECESSARY FOR PLACING REINFORCING STEEL.
 FOR PILE SPLICE DETAILS, SEE "END BENT 2 DETAILS" SHEET.



DETAIL "A"
(TYP. EA. BRIDGE SEAT)



PARTIAL END ELEVATION
(FOR COLUMN REINFORCING STEEL, SEE ELEVATION)

PROJECT NO. I-5878
 HARNETT COUNTY
 STATION: 26+05.28 -Y14-

MIN. SPLICE LENGTHS	
BAR SIZE	UNCOATED
#10 B1	11'-1"
#10 B2	7'-11"



4/10/2020

DOCUMENT NOT CONSIDERED FINAL
 UNLESS ALL SIGNATURES COMPLETED

STATE OF NORTH CAROLINA
 DEPARTMENT OF TRANSPORTATION
 RALEIGH
 SUBSTRUCTURE
 BENT 1

DRAWN BY : C. E. MAYHEW DATE : 9-11-19
 CHECKED BY : A. H. SHARPE DATE : 11-4-19

REINFORCING STEEL DIMENSIONS AND DETAILS ARE TYPICAL FOR EACH COLUMN AND FOOTING.
 DIMENSIONS AND PILE LOCATIONS ARE TYPICAL FOR EACH FOOTING.

NO.	BY:	DATE:	REVISIONS			SHEET NO.
			NO.	BY:	DATE:	
1			3			TOTAL SHEETS
2			4			35

Michael Baker International
 Michael Baker Engineering
 8000 Regency Parkway, Suite 600
 Cary, North Carolina 27518
 NC License No.: F-1084