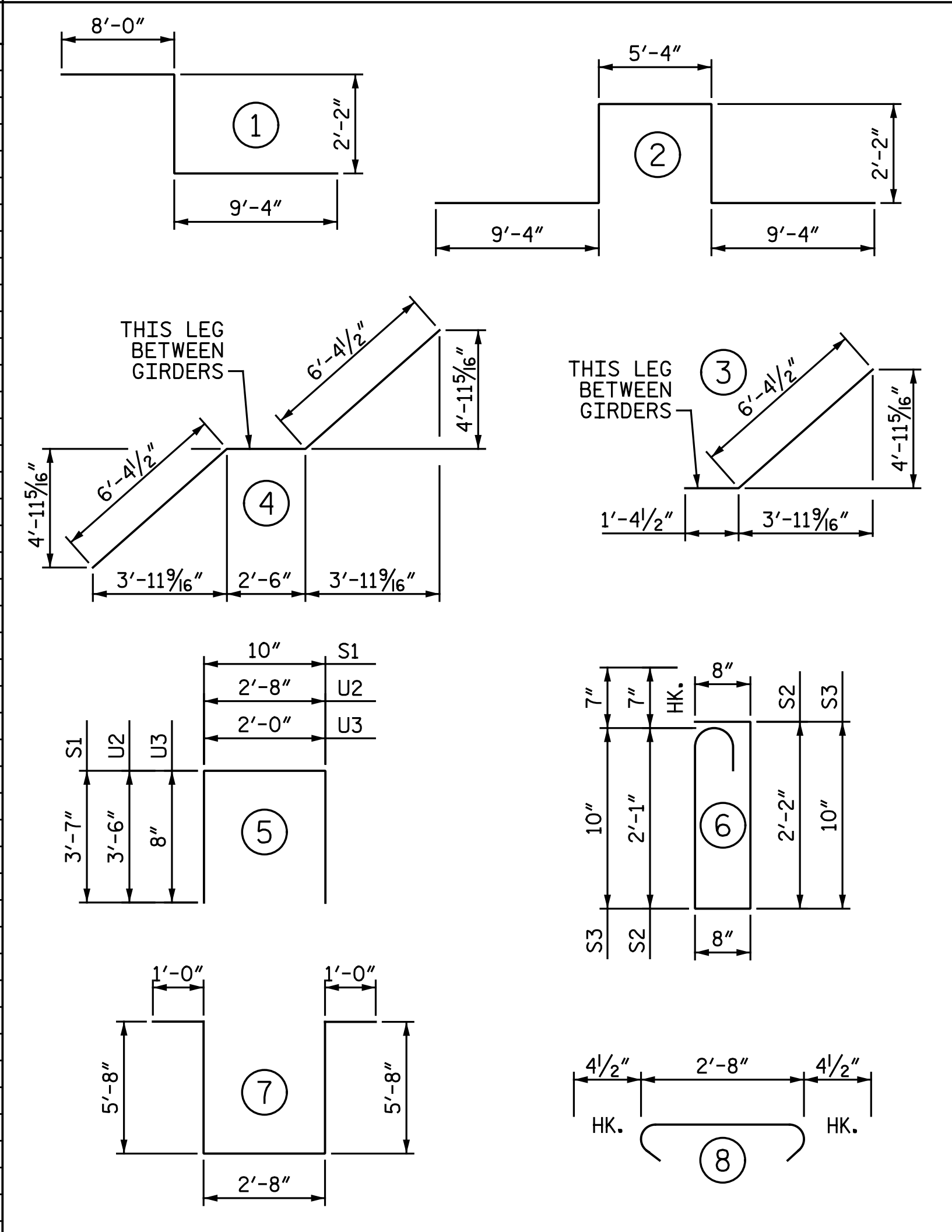


REINFORCING BAR SCHEDULE

SPANS A & B					SPANS A & B (CONT'D.)						
BAR	NO.	SIZE	TYPE	LENGTH	WEIGHT	BAR	NO.	SIZE	TYPE	LENGTH	WEIGHT
*A1	292	#5	STR.	45' - 3"	13,781	A216	2	#5	STR.	33' - 10"	71
A2	292	#5	STR.	45' - 3"	13,781	A217	2	#5	STR.	33' - 2"	69
*A3	40	#6	STR.	32' - 2"	1,933	A218	2	#5	STR.	32' - 5"	68
*A101	2	#5	STR.	44' - 9"	93	A219	2	#5	STR.	31' - 9"	66
*A102	2	#5	STR.	44' - 1"	92	A220	2	#5	STR.	31' - 1"	65
*A103	2	#5	STR.	43' - 5"	91	A221	2	#5	STR.	30' - 5"	63
*A104	2	#5	STR.	42' - 9"	89	A222	2	#5	STR.	29' - 8"	62
*A105	2	#5	STR.	42' - 0"	88	A223	2	#5	STR.	29' - 0"	60
*A106	2	#5	STR.	41' - 4"	86	A224	2	#5	STR.	28' - 4"	59
*A107	2	#5	STR.	40' - 8"	85	A225	2	#5	STR.	27' - 8"	58
*A108	2	#5	STR.	40' - 0"	83	A226	2	#5	STR.	27' - 0"	56
*A109	2	#5	STR.	39' - 4"	82	A227	2	#5	STR.	26' - 3"	55
*A110	2	#5	STR.	37' - 11"	79	A228	2	#5	STR.	25' - 7"	53
*A111	2	#5	STR.	37' - 3"	78	A229	2	#5	STR.	24' - 11"	52
*A112	2	#5	STR.	36' - 7"	76	A230	2	#5	STR.	24' - 3"	51
*A113	2	#5	STR.	35' - 10"	75	A231	2	#5	STR.	23' - 7"	49
*A114	2	#5	STR.	35' - 2"	73	A232	2	#5	STR.	22' - 10"	48
*A115	2	#5	STR.	34' - 6"	72	A233	2	#5	STR.	22' - 2"	46
*A116	2	#5	STR.	33' - 10"	71	A234	2	#5	STR.	21' - 6"	45
*A117	2	#5	STR.	33' - 2"	69	A235	2	#5	STR.	20' - 10"	43
*A118	2	#5	STR.	32' - 5"	68	A236	2	#5	STR.	20' - 1"	42
*A119	2	#5	STR.	31' - 9"	66	A237	2	#5	STR.	19' - 5"	41
*A120	2	#5	STR.	31' - 1"	65	A238	2	#5	STR.	18' - 9"	39
*A121	2	#5	STR.	30' - 5"	63	A239	2	#5	STR.	18' - 1"	38
*A122	2	#5	STR.	29' - 8"	62	A240	2	#5	STR.	17' - 5"	36
*A123	2	#5	STR.	29' - 0"	60	A241	2	#5	STR.	16' - 8"	35
*A124	2	#5	STR.	28' - 4"	59	A242	2	#5	STR.	16' - 0"	33
*A125	2	#5	STR.	27' - 8"	58	A243	2	#5	STR.	15' - 4"	32
*A126	2	#5	STR.	27' - 0"	56	A244	2	#5	STR.	14' - 8"	31
*A127	2	#5	STR.	26' - 3"	55	A245	2	#5	STR.	13' - 11"	29
*A128	2	#5	STR.	25' - 7"	53	A246	2	#5	STR.	13' - 3"	28
*A129	2	#5	STR.	24' - 11"	52	A247	2	#5	STR.	12' - 7"	26
*A130	2	#5	STR.	24' - 3"	51	A248	2	#5	STR.	11' - 11"	25
*A131	2	#5	STR.	23' - 7"	49	A249	2	#5	STR.	11' - 3"	23
*A132	2	#5	STR.	22' - 10"	48	A250	2	#5	STR.	10' - 6"	22
*A133	2	#5	STR.	22' - 2"	46	A251	2	#5	STR.	9' - 10"	21
*A134	2	#5	STR.	21' - 6"	45	A252	2	#5	STR.	9' - 2"	19
*A135	2	#5	STR.	20' - 10"	43	A253	2	#5	STR.	8' - 6"	18
*A136	2	#5	STR.	20' - 1"	42	A254	2	#5	STR.	7' - 9"	16
*A137	2	#5	STR.	19' - 5"	41	A255	2	#5	STR.	7' - 1"	15
*A138	2	#5	STR.	18' - 9"	39	A256	2	#5	STR.	6' - 5"	13
*A139	2	#5	STR.	18' - 1"	38	A257	2	#5	STR.	6' - 5"	13
*A140	2	#5	STR.	17' - 5"	36	A258	2	#5	STR.	5' - 9"	12
*A141	2	#5	STR.	16' - 8"	35	A259	2	#5	STR.	5' - 1"	11
*A142	2	#5	STR.	16' - 0"	33	A260	2	#5	STR.	4' - 4"	9
*A143	2	#5	STR.	15' - 4"	32	A261	2	#5	STR.	3' - 8"	8
*A144	2	#5	STR.	14' - 8"	31	A262	2	#5	STR.	3' - 0"	6
*A145	2	#5	STR.	13' - 11"	29	A263	2	#5	STR.	2' - 4"	5
*A146	2	#5	STR.	13' - 3"	28	*B1	124	#4	STR.	38' - 11"	3,224
*A147	2	#5	STR.	12' - 7"	26	B2	216	#5	STR.	57' - 7"	12,973
*A148	2	#5	STR.	11' - 11"	25	*B3	93	#6	STR.	27' - 5"	3,830
*A149	2	#5	STR.	11' - 3"	23	*B4	60	#6	STR.	39' - 6"	3,560
*A150	2	#5	STR.	10' - 6"	22	*B5	72	#4	STR.	39' - 0"	1,876
*A151	2	#5	STR.	9' - 10"	21	*G1	4	#5	STR.	31' - 11"	133
*A152	2	#5	STR.	9' - 2"	19	*G2	448	#4	STR.	8' - 6"	2,544
*A153	2	#5	STR.	8' - 6"	18	*K1	8	#8	1	19' - 6"	417
*A154	2	#5	STR.	7' - 9"	16	*K2	12	#8	2	28' - 4"	908
*A155	2	#5	STR.	7' - 1"	15	*K3	16	#5	STR.	11' - 4"	189
*A156	2	#5	STR.	6' - 5"	13	*K4	24	#6	STR.	7' - 3"	261
*A157	2	#5	STR.	6' - 5"	13	K5	32	#4	STR.	11' - 4"	242
*A158	2	#5	STR.	5' - 9"	12	K6	8	#4	STR.	7' - 3"	39
*A159	2	#5	STR.	5' - 1"	11	K7	8	#4	STR.	8' - 5"	45
*A160	2	#5	STR.	4' - 4"	9	K8	10	#4	3	7' - 9"	52
*A161	2	#5	STR.	3' - 8"	8	K9	15	#4	4	15' - 3"	153
*A162	2	#5	STR.	3' - 0"	6	K10	16	#4	STR.	3' - 8"	39
*A163	2	#5	STR.	2' - 4"	5						
A201	2	#5	STR.	44' - 9"	93	*S1	48	#4	5	8' - 0"	257
A202	2	#5	STR.	44' - 1"	92	*S2	48	#5	6	6' - 3"	313
A203	2	#5	STR.	43' - 5"	91	*S3	32	#5	6	3' - 11"	131
A204	2	#5	STR.	42' - 9"	89	S4	144	#4	8	3' - 5"	329
A205	2	#5	STR.	42' - 0"	88						
A206	2	#5	STR.	41' - 4"	86	U1	24	#4	7	16' - 0"	257
A207	2	#5	STR.	40' - 8"	85	U2	8	#4	5	9' - 8"	52
A208	2	#5	STR.	40' - 0"	83	*U3	128	#4	5	3' - 4"	285
A209	2	#5	STR.	39' - 4"	82						
A210	2	#5	STR.	37' - 11"	79						
A211	2	#5	STR.	37' - 3"	78						
A212	2	#5	STR.	36' - 7"	76						
A213	2	#5	STR.	35' - 10"	75						
A214	2	#5	STR.	35' - 2"	73						
A215	2	#5	STR.	34' - 6"	72						

BAR TYPES



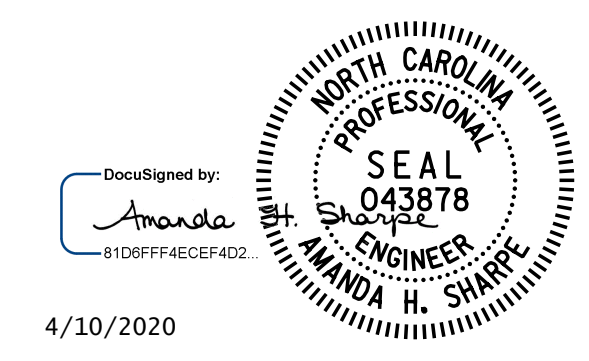
ALL BAR DIMENSIONS ARE OUT TO OUT

—SUPERSTRUCTURE BILL OF MATERIAL—

	CLASS AA CONCRETE (CU. YDS.)	REINFORCING STEEL (LBS.)	EPOXY COATED REINFORCING STEEL (LBS.)
SPANS A & B		30,989	36,669
POUR 1	159.2		
POUR 2	202.1		
SIDEWALKS	78.3		***
TOTALS **	439.6	30,989	36,669

** QUANTITIES FOR THREE BAR METAL RAIL ARE NOT INCLUDED
*** QUANTITIES INCLUDED WITH SPAN TOTALS

PROJECT NO. I-5878
HARNETT COUNTY
STATION: 26+05.28 -Y14-

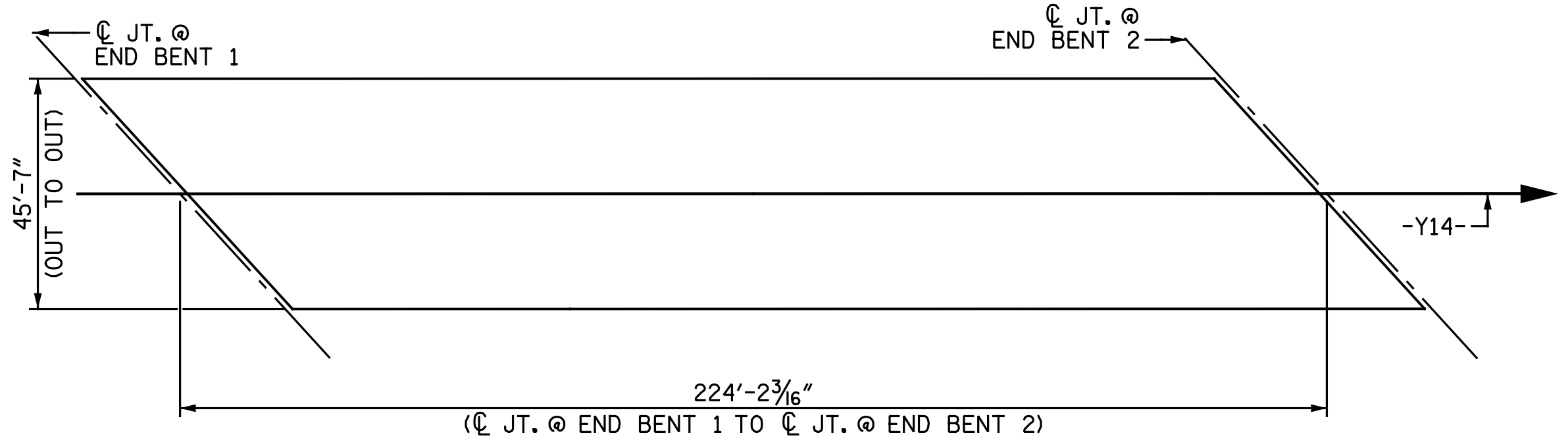


4/10/2020

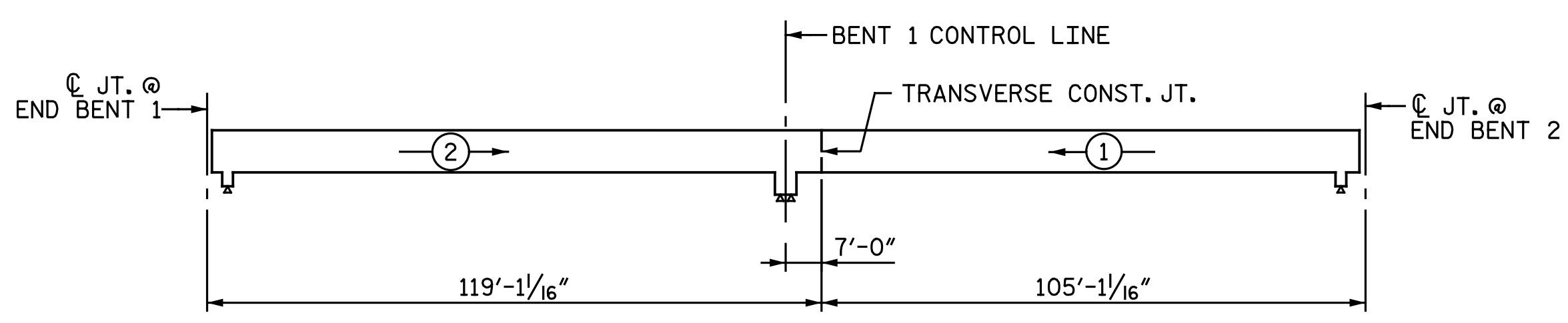
DOCUMENT NOT CONSIDERED FINAL
UNLESS ALL SIGNATURES COMPLETED

STATE OF NORTH CAROLINA
DEPARTMENT OF TRANSPORTATION
RALEIGH
SUPERSTRUCTURE
BILL OF MATERIAL

REVISIONS						SHEET NO.	
NO.	BY:	DATE:	NO.	BY:	DATE:	SI-22	
1			3			TOTAL SHEETS	
2			4			35	

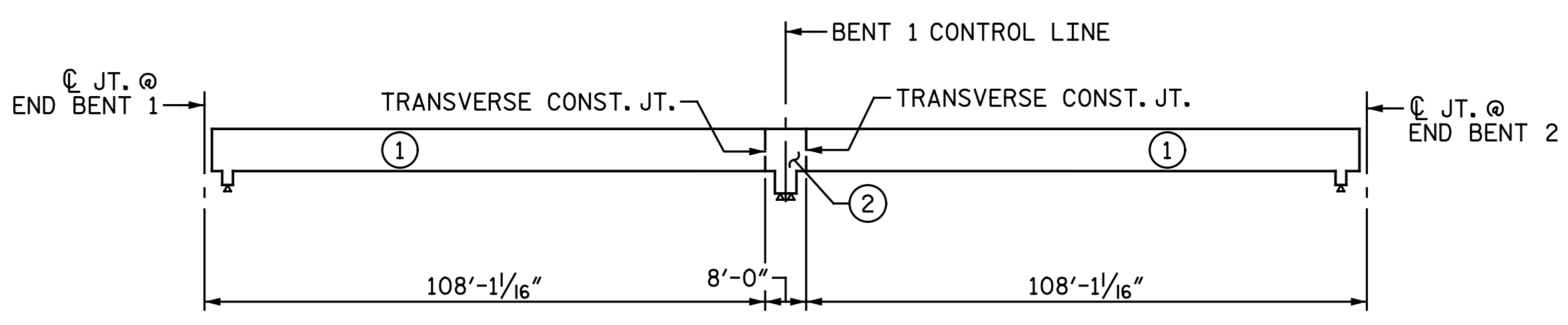


LAYOUT FOR COMPUTING AREA OF REINFORCED CONCRETE DECK SLAB
(SQ. FT. = 10,219)



POURING SEQUENCE

⊙ DENOTES POUR NUMBER AND DIRECTION



OPTIONAL POURING SEQUENCE

⊙ DENOTES POUR NUMBER

GROOVING BRIDGE FLOORS

APPROACH SLABS	1,367	SQ.FT.
BRIDGE DECK	6,449	SQ.FT.
TOTAL	7,816	SQ.FT.

DRAWN BY : C. E. MAYHEW DATE : 11-11-19
CHECKED BY : A. H. SHARPE DATE : 12-23-19

Michael Baker International
Michael Baker Engineering
8000 Regency Parkway, Suite 600
Cary, North Carolina 27518
NC License No. : F-1084