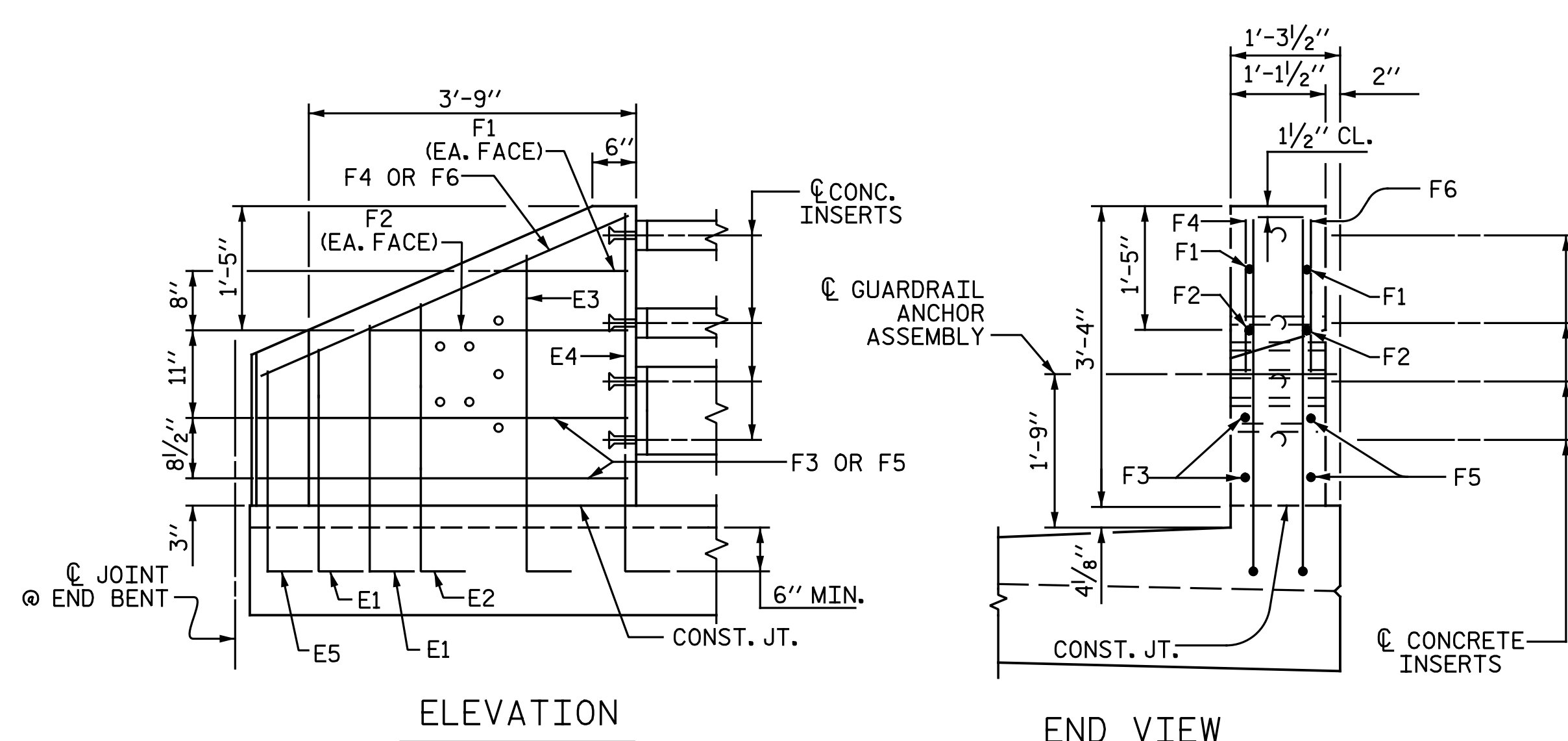
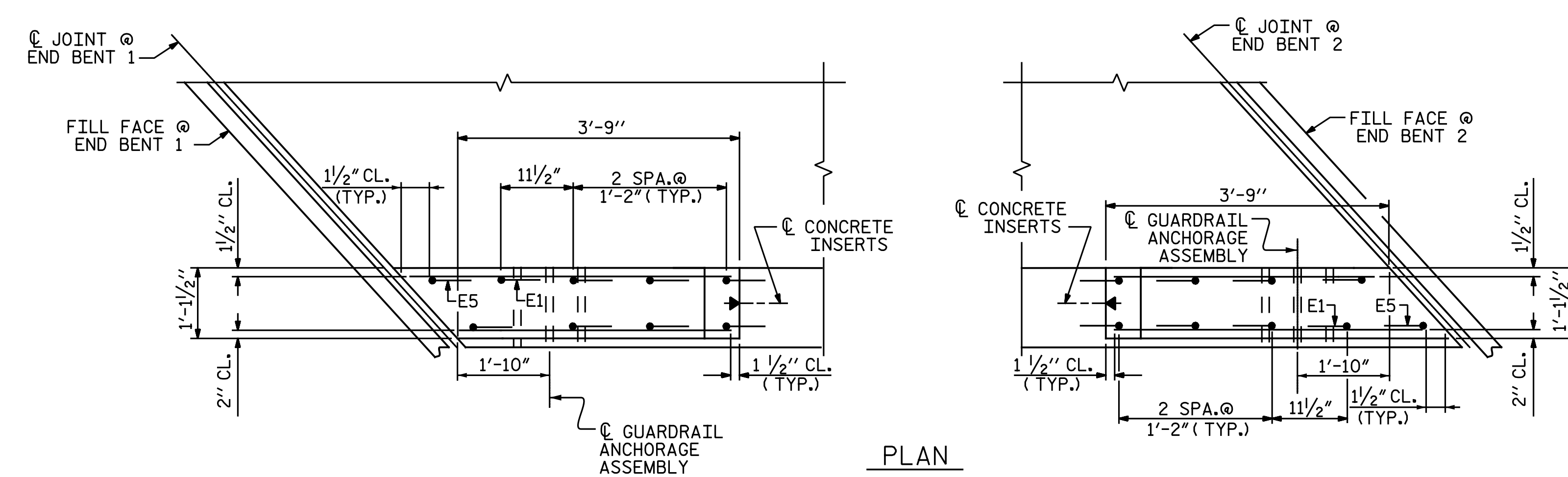


PLAN OF RAIL POST SPACING
RIGHT SIDE SHOWN, LEFT SIDE SIMILAR BY ROTATION.



ELEVATION
END VIEW

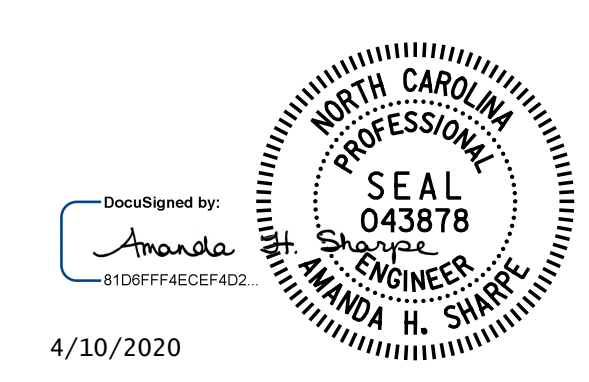


PLAN
END POST DETAILS

BILL OF MATERIAL					
ONE END POST (4 REQ'D)					
BILL FOR ONE END POST					
BAR	NO.	SIZE	TYPE	LENGTH	WEIGHT
*E1	2	#7	1	3' - 5"	14
*E2	2	#7	1	4' - 0"	16
*E3	2	#7	1	4' - 7"	19
*E4	2	#7	1	5' - 0"	20
*E5	1	#7	1	3' - 3"	7
*F1	2	#6	STR.	1' - 10"	6
*F2	2	#6	STR.	3' - 4"	10
*F3	2	#6	STR.	4' - 3"	13
*F4	1	#6	STR.	4' - 8"	7
*F5	2	#6	STR.	3' - 8"	11
*F6	1	#6	STR.	3' - 9"	6
* EPOXY COATED REINFORCING STEEL				LBS.	129
CLASS AA CONCRETE				C.Y.	0.5
BAR TYPE					
ALL BAR DIMENSIONS ARE OUT TO OUT.					

NOTES:
 FOR DETAIL OF GUARDRAIL ANCHOR ASSEMBLY, SEE "GUARDRAIL ANCHORAGE DETAILS FOR METAL RAILS" SHEET 3 OF 3.
 FOR DETAILS OF CONCRETE INSERT, SEE "3 BAR METAL RAIL" SHEET 3 OF 3.
 ALL REINFORCING STEEL IN SIDEWALK AND END POSTS SHALL BE EPOXY COATED.
 NO ADDITIONAL PAYMENT SHALL BE MADE FOR THE CONCRETE END POSTS AS THIS IS CONSIDERED INCIDENTAL TO THE CONSTRUCTION OF THE 3 BAR METAL RAIL.

PROJECT NO. I-5878
HARNETT COUNTY
 STATION: 26+05.28 -Y14-



STATE OF NORTH CAROLINA
 DEPARTMENT OF TRANSPORTATION
 RALEIGH
 SUPERSTRUCTURE
 RAIL POST SPACINGS
 AND
 END OF RAIL DETAILS

DOCUMENT NOT CONSIDERED FINAL
 UNLESS ALL SIGNATURES COMPLETED

REVISIONS						SHEET NO.
NO.	BY:	DATE:	NO.	BY:	DATE:	SI-19
1			3			TOTAL SHEETS
2			4			35

DRAWN BY : N. B. SPEAKS DATE : 6-28-19
 CHECKED BY : A. H. SHARPE DATE : 10-17-19

Michael Baker International
 Michael Baker Engineering
 8000 Regency Parkway, Suite 600
 Cary, North Carolina 27518
 NC License No. : F-1084