

- DEBONDING LEGEND**
- FULLY BONDED STRANDS
 - ◻ STRANDS DEBONDED FOR 4'-0" FROM END OF GIRDER
 - ◐ STRANDS DEBONDED FOR 12'-0" FROM END OF GIRDER

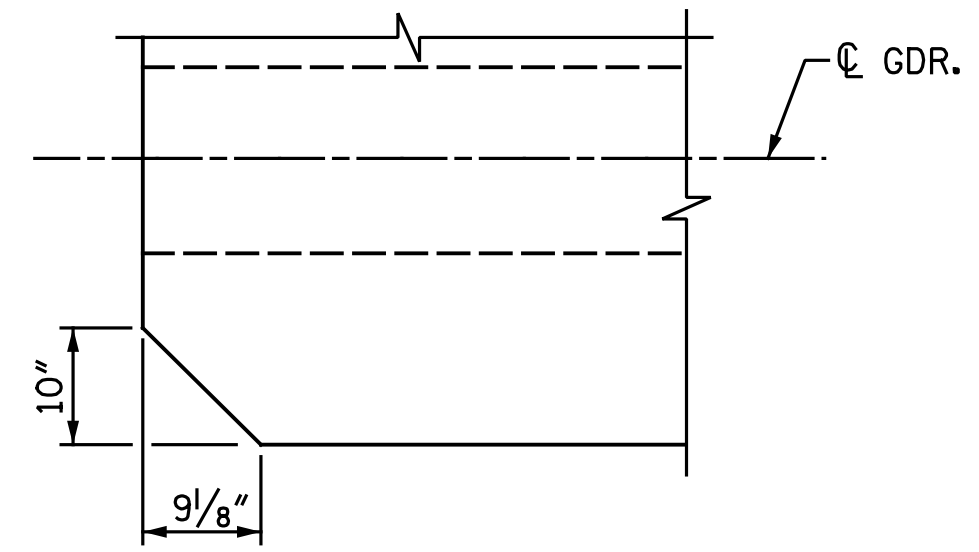
0.6" Ø L. R. GRADE 270 STRANDS						
AREA (SQ. INCHES)	ULTIMATE STRENGTH (LBS. PER STRAND)	APPLIED PRESTRESS (LBS. PER STRAND)				
0.217	58,600	43,950				
REINFORCING STEEL FOR ONE GDR						
BAR NUMBER	SIZE	TYPE	LENGTH	WEIGHT		
S1	176	#4	1	6'-0"	705	
S2	48	#5	1	6'-0"	300	
S3	12	#4	2	8'-5"	67	
S4	96	#4	3	3'-0"	192	
S5	1	#5	2	9'-10"	10	
S6	224	#5	4	4'-3"	993	
GIRDER 3	S6	224	#5	4	4'-4"	1,012
GIRDER 4 & 5	S6	224	#5	4	4'-7"	1,071
	*S7	10	#5	STR.	3'-8"	38
	S8	2	#5	2	9'-0"	19
	S9	27	#5	STR.	3'-3"	92
	S10	1	#3	STR.	1'-10"	1
GIRDER 1 & 5	S11	8	#5	5	10'-0"	83
GIRDER 2, 3 & 4	S11	16	#5	5	10'-0"	167
GIRDER 1 & 5	S12	16	#4	STR.	8'-0"	86
GIRDER 2, 3 & 4	S13	16	#4	STR.	16'-7"	177

* NOTE: S7 BARS SHALL BE BENT BEFORE SHIPMENT. HEAT BENDING SHALL NOT BE ALLOWED.

QUANTITIES FOR ONE GIRDER			
	REINFORCING STEEL	9,000 PSI CONCRETE	0.6" Ø L.R. STRANDS
	LB.	C.Y.	No.
GIRDER 1	2,586	21.8	44
GIRDER 2	2,761	21.8	44
GIRDER 3	2,780	21.8	44
GIRDER 4	2,839	21.8	44
GIRDER 5	2,664	21.8	44

GIRDERS REQUIRED		
NUMBER	LENGTH	TOTAL LENGTH
5	110.29'	551.46'

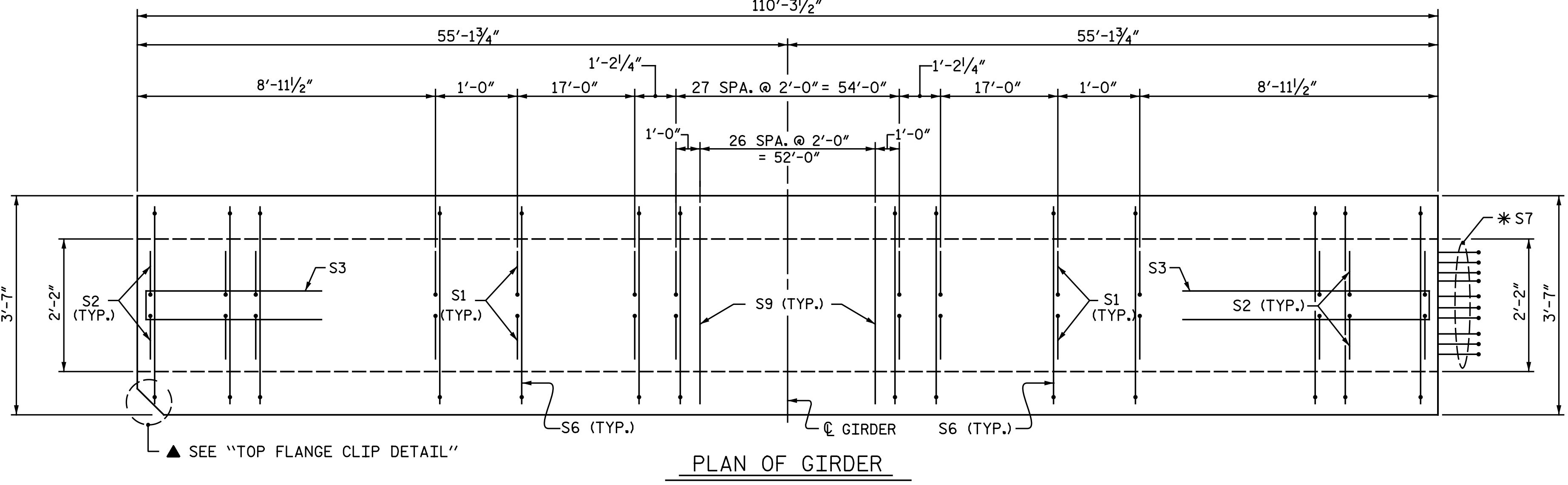
NOTE:
FOR "PARTIAL ELEVATION" SEE PRESTRESSED CONCRETE GIRDER CONTINUOUS FOR LIVE LOAD DETAILS SHEET.



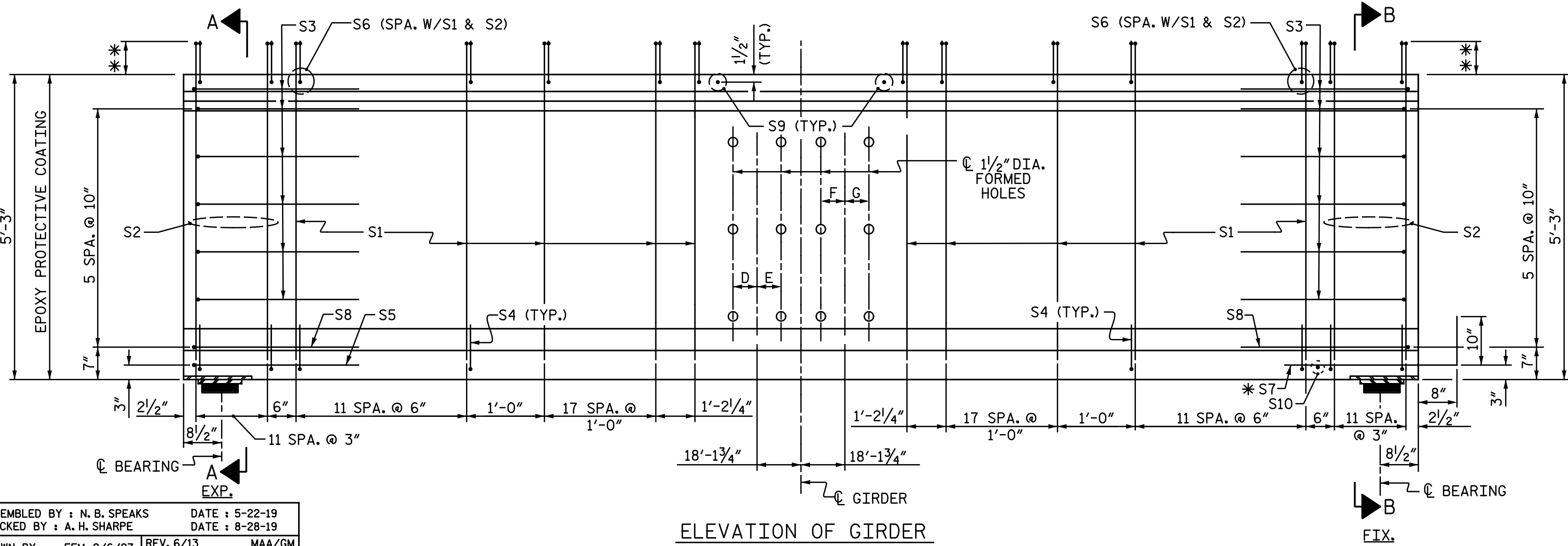
TOP FLANGE CLIP DETAIL
▲ HORIZONTAL LEG OF FIRST 3 S6 BARS CAN BE TRIMMED TO FIT.

FORMED HOLE LOCATIONS				
GIRDER	"D"	"E"	"F"	"G"
1	N/A	4'-3/8"	N/A	4'-3/8"
2, 3 & 4	4'-3/8"	4'-3/8"	4'-3/8"	4'-3/8"
5	4'-3/8"	N/A	4'-3/8"	N/A

** BAR PROJECTION	
GIRDER	PROJECTION
1, 2	5"
3	6"
4, 5	6 1/2"



PLAN OF GIRDER



ELEVATION OF GIRDER

ASSEMBLED BY : N. B. SPEAKS DATE : 5-22-19
 CHECKED BY : A. H. SHARPE DATE : 8-28-19
 DRAWN BY : EEM 2/6/97 REV. 6/13 MAA/GM
 CHECKED BY : VAP 2/6/97 REV. 1/15 MAA/TMG
 REV. 12/17 MAA/THC

DOCUMENT NOT CONSIDERED FINAL
UNLESS ALL SIGNATURES COMPLETED

Michael Baker INTERNATIONAL
 Michael Baker Engineering
 8000 Regency Parkway, Suite 600
 Cary, North Carolina 27518
 NC License No. : F-1084



PROJECT NO. I-5878
HARNETT COUNTY
 STATION: 26+05.28 -Y14-

STATE OF NORTH CAROLINA
 DEPARTMENT OF TRANSPORTATION
 RALEIGH
 STANDARD
 63" PRESTRESSED CONCRETE
 MODIFIED BULB TEE
 CONTINUOUS FOR LIVE LOAD
 SPAN A

REVISIONS						SHEET NO. SI-II
NO.	BY:	DATE:	NO.	BY:	DATE:	
1			3			TOTAL SHEETS
2			4			35