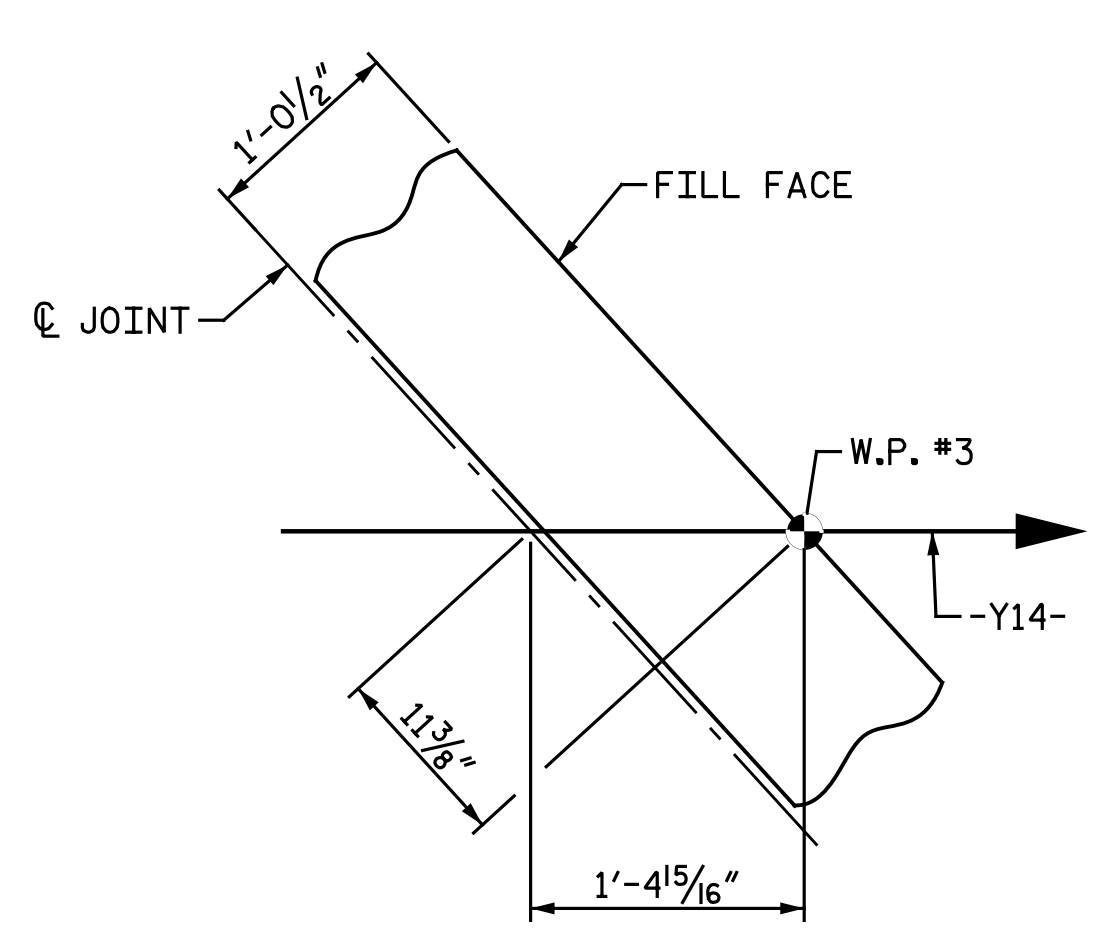
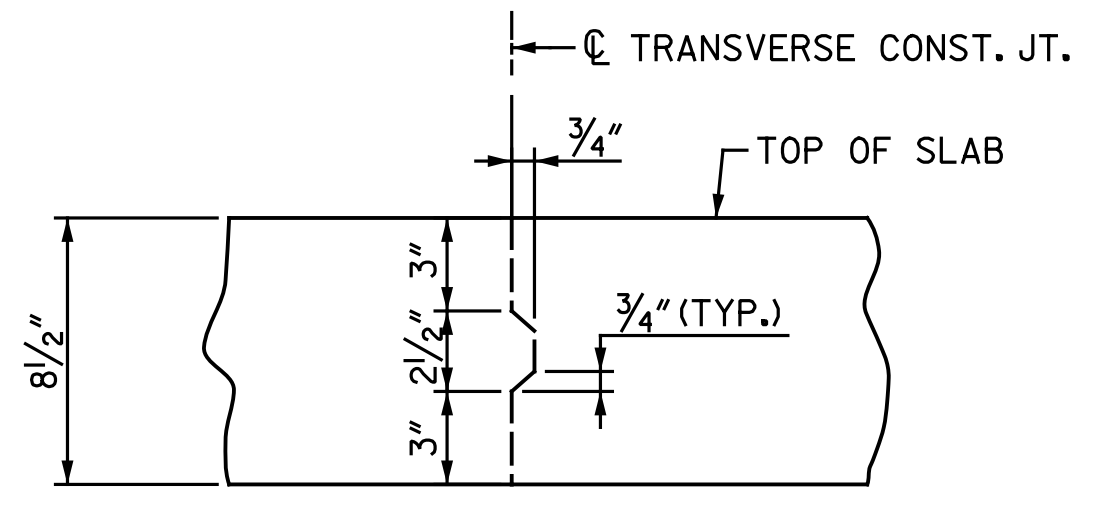
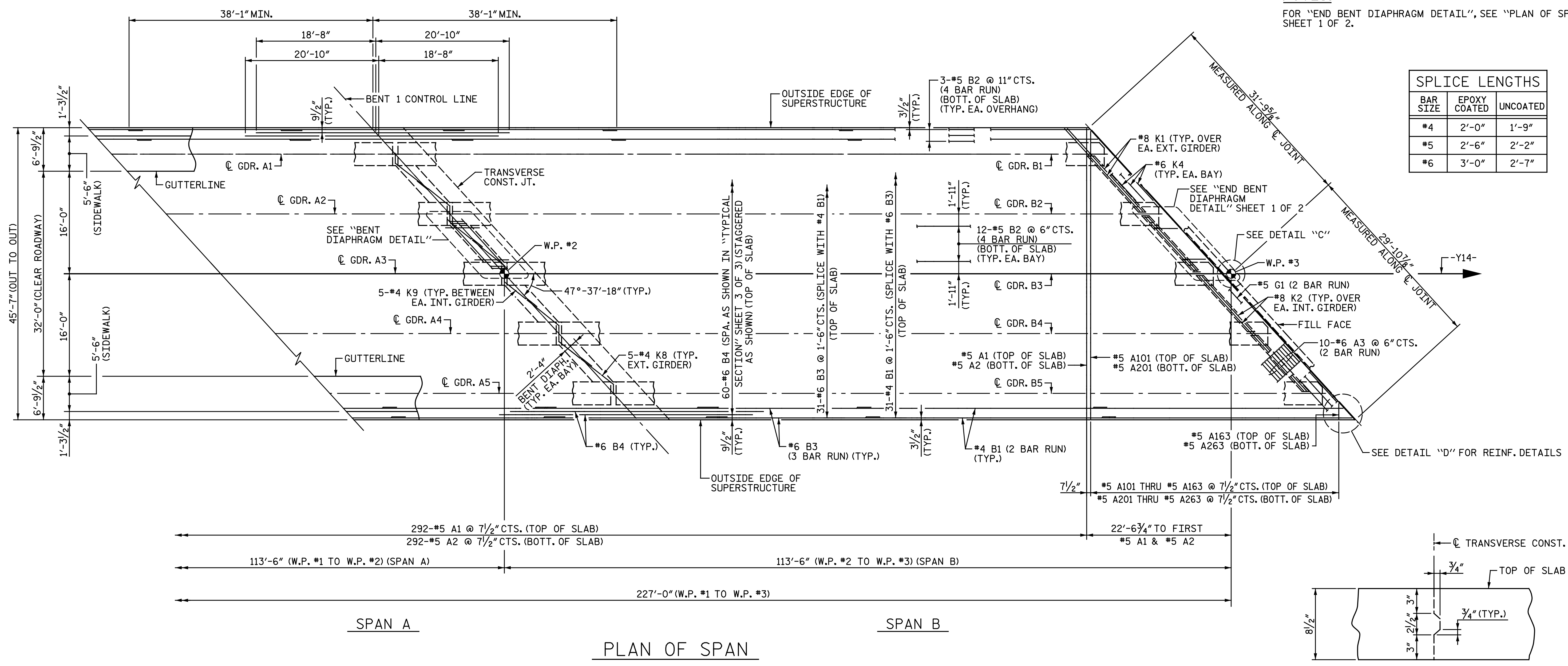
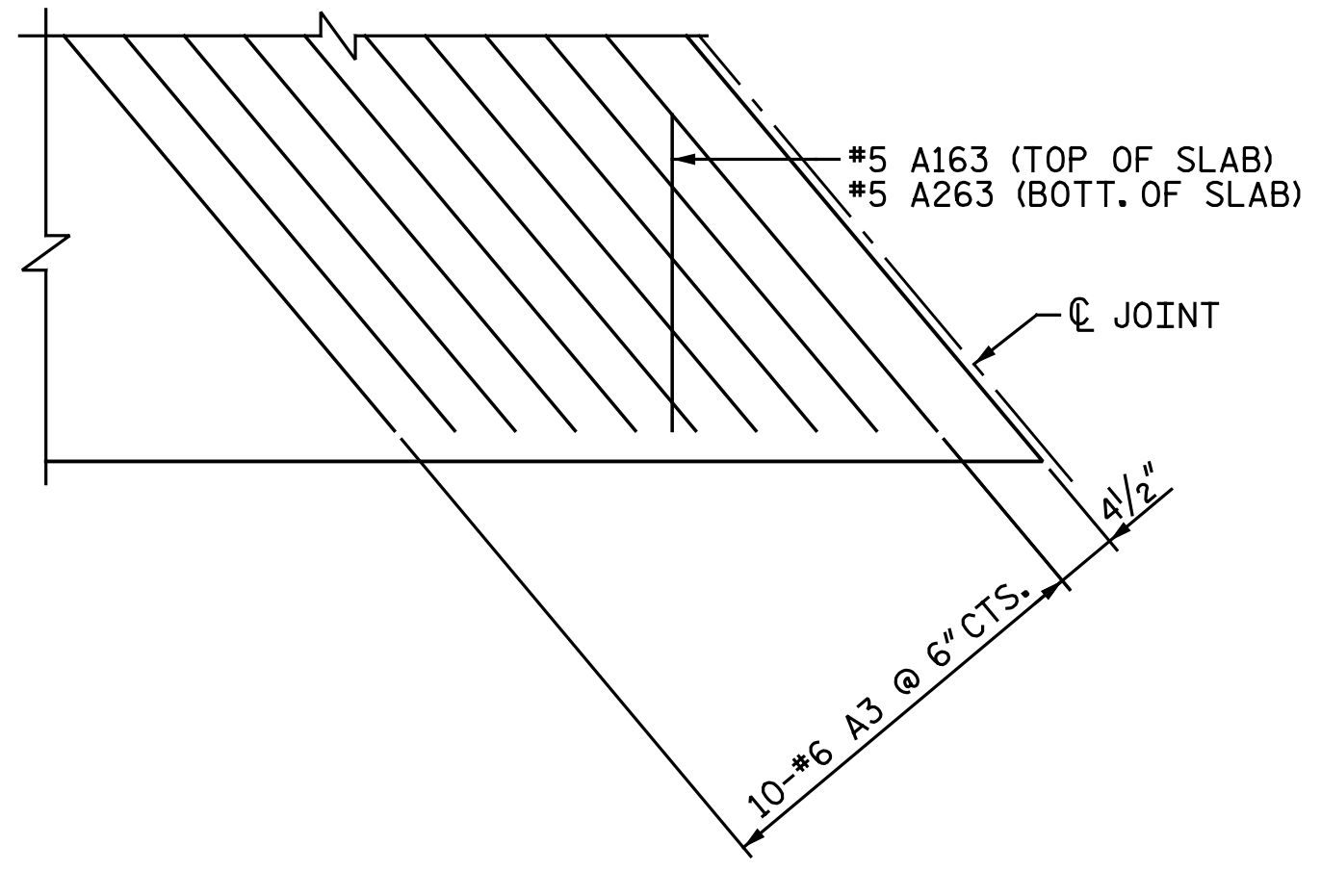


NOTES:
 FOR "END BENT DIAPHRAGM DETAIL", SEE "PLAN OF SPANS" SHEET 1 OF 2.

SPLICE LENGTHS		
BAR SIZE	EPOXY COATED	UNCOATED
#4	2'-0"	1'-9"
#5	2'-6"	2'-2"
#6	3'-0"	2'-7"

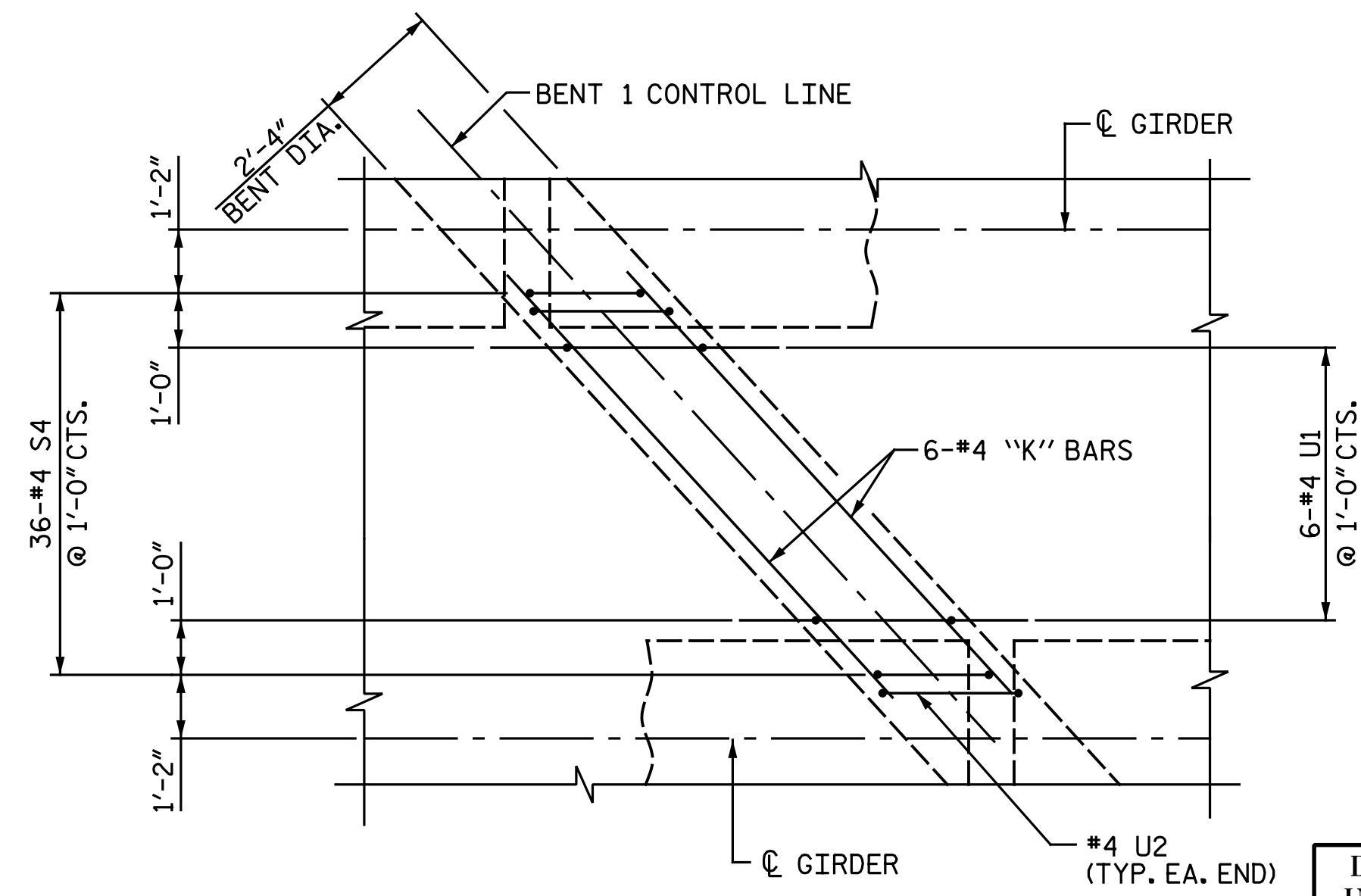


DETAIL "C"



DETAIL "D"

*#6 A3 BARS ARE TO BE PLACED PARALLEL TO SKEW, SPACED AS SHOWN, AND LOCATED BELOW B1 BARS.
 SEE ALSO "SECTION THRU END BENT DIAPHRAGM" DETAIL ON "TYPICAL SECTION" SHEET 2 OF 3.



BENT DIAPHRAGM DETAIL

K8 & K9 BARS NOT SHOWN FOR CLARITY (TYP. EA. BAY)

TRANSVERSE CONST. JT. DETAIL

REINFORCING STEEL IN SLAB NOT SHOWN.
 REINFORCING STEEL SHALL BE CONTINUOUS THROUGH JOINT.

PROJECT NO. I-5878
HARNETT COUNTY
 STATION: 26+05.28 -Y14-
 SHEET 2 OF 2

DocuSigned by:
 Amanda
 81D6FFF4E0EF4D2
 4/10/2020



STATE OF NORTH CAROLINA
 DEPARTMENT OF TRANSPORTATION
 RALEIGH
 SUPERSTRUCTURE
 PLAN OF SPANS

DOCUMENT NOT CONSIDERED FINAL
 UNLESS ALL SIGNATURES COMPLETED

NO.	BY:	DATE:	REVISIONS			SHEET NO.
			NO.	BY:	DATE:	
1			3			SI-9
2			4			TOTAL SHEETS 35

DRAWN BY: W. D. MCGREADY DATE: 09-11-19
 CHECKED BY: A. H. SHARPE DATE: 3-2-20