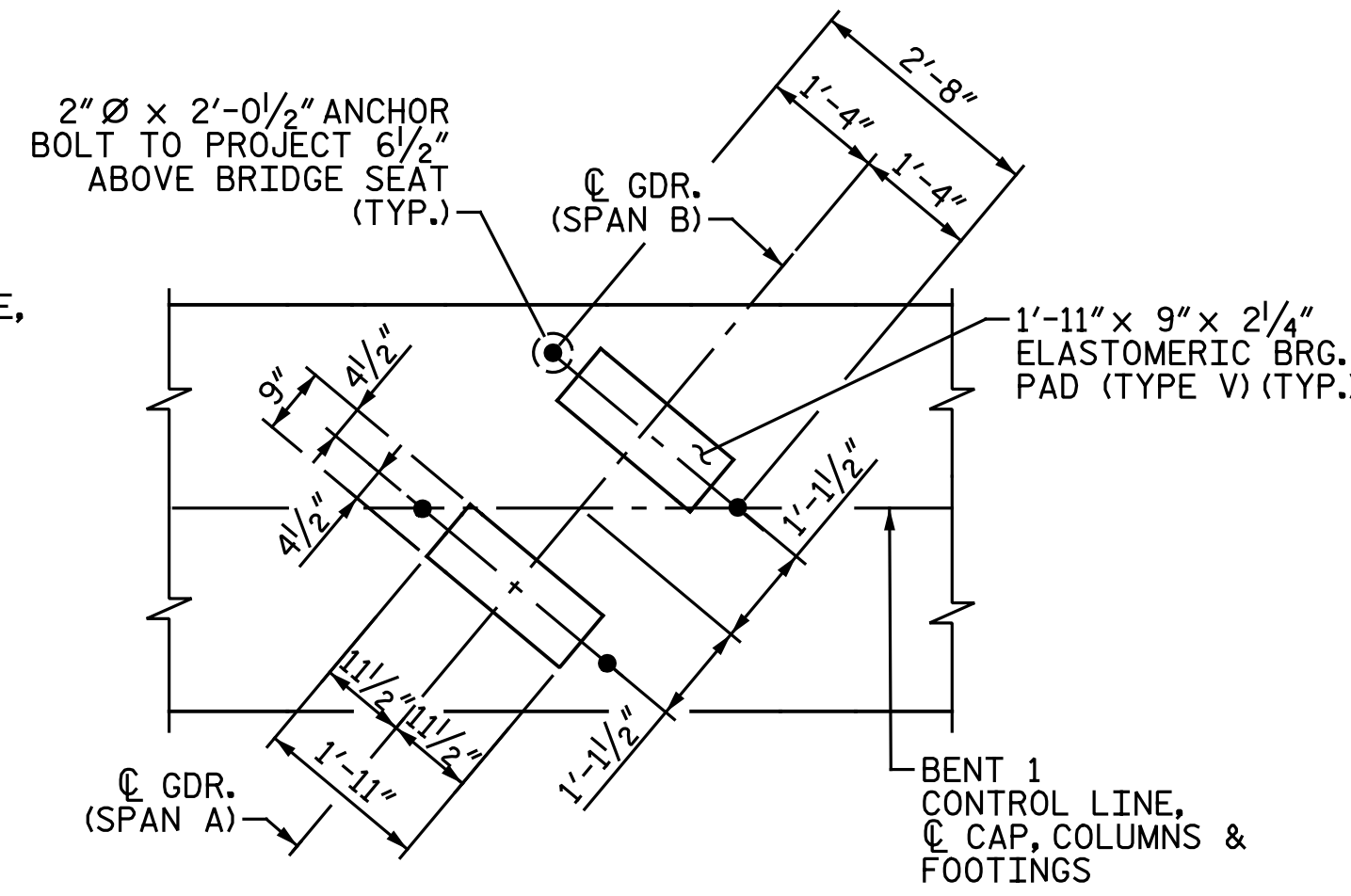
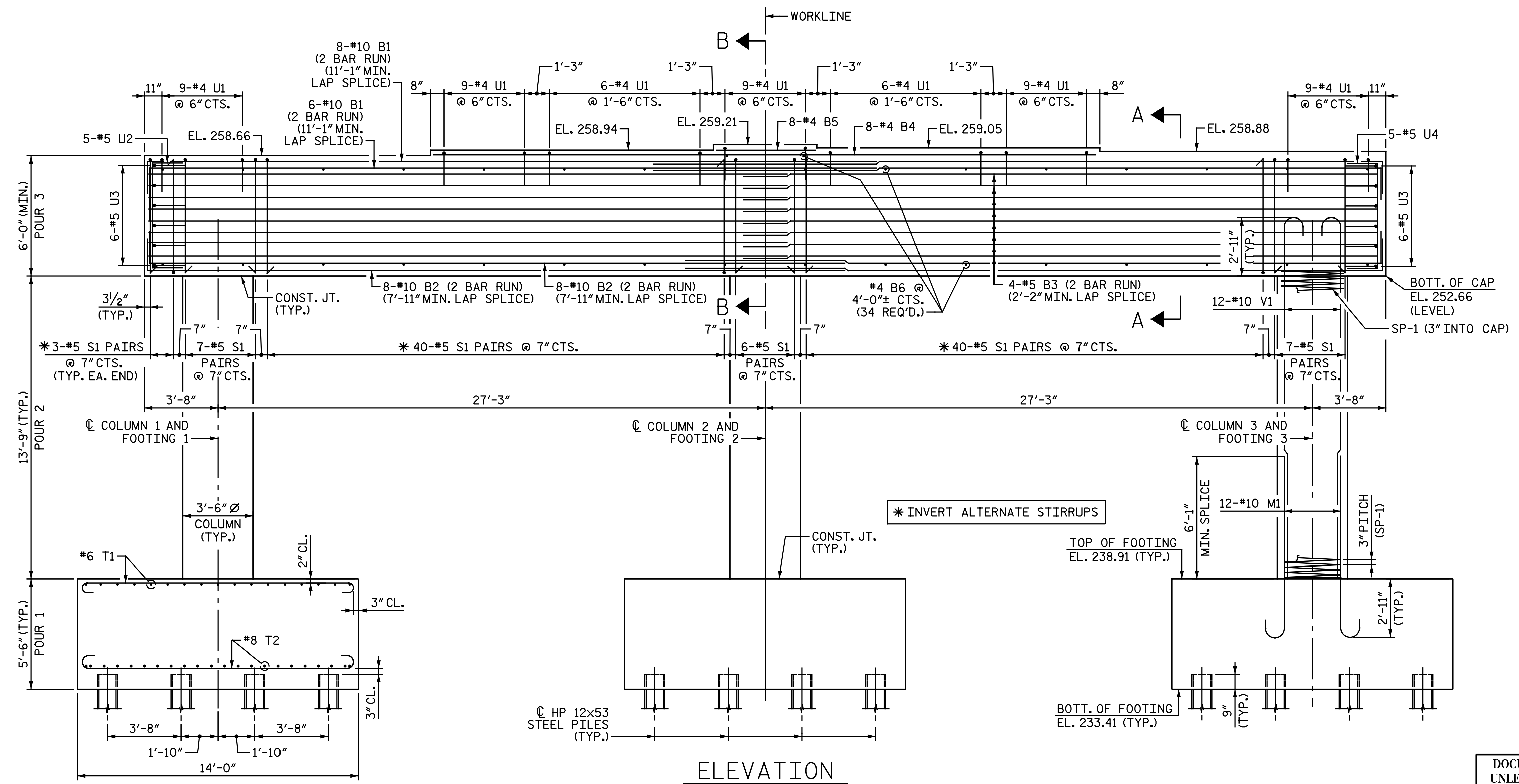


PLAN

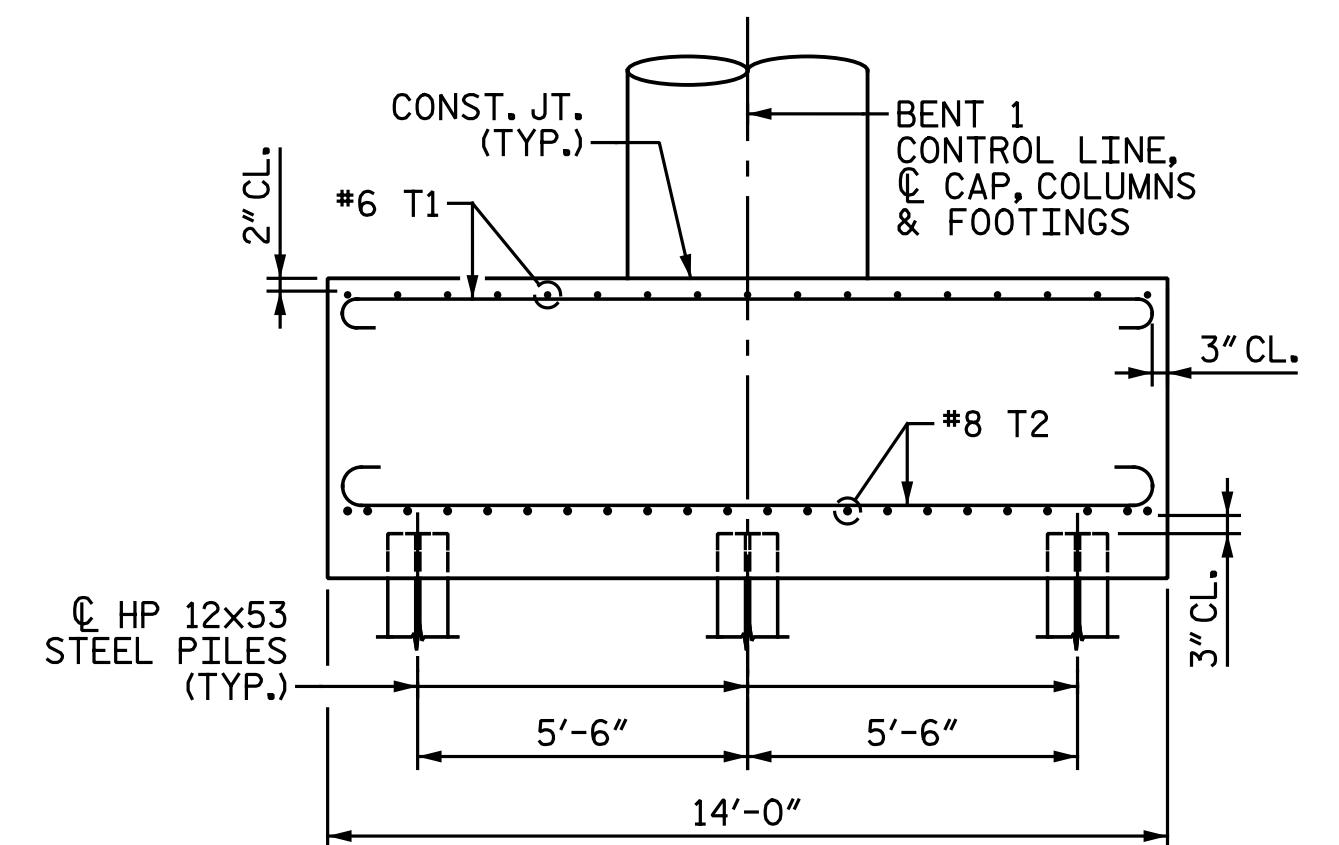
NOTES:
 STIRRUPS AND "U" BARS IN CAP MAY BE SHIFTED AS NECESSARY TO CLEAR ANCHOR BOLTS AND COLUMN REINFORCING STEEL.
 FOR "SECTION A-A" AND "SECTION B-B", SEE "BENT 1 DETAILS" SHEET.
 HOOKS ON "V" BARS MAY BE TURNED AS NECESSARY FOR PLACING REINFORCING STEEL.
 FOR PILE SPlice DETAILS, SEE "END BENT 2 DETAILS" SHEET.



DETAIL "A"
 (TYP. EA. BRIDGE SEAT)

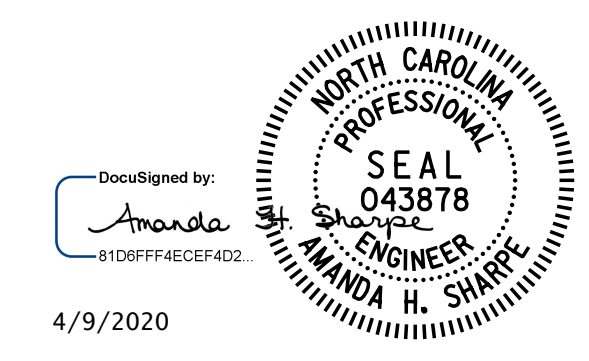


ELEVATION



PARTIAL END ELEVATION
 (FOR COLUMN REINFORCING STEEL, SEE ELEVATION)

PROJECT NO. I-5883
HARNETT COUNTY
 STATION: 26+80.73 -Y17-



STATE OF NORTH CAROLINA
 DEPARTMENT OF TRANSPORTATION
 RALEIGH
 SUBSTRUCTURE
 BENT 1

DRAWN BY: M. D. MAYHEW DATE: 11-12-19
 CHECKED BY: A. H. SHARPE DATE: 12-3-19

REINFORCING STEEL DIMENSIONS AND DETAILS ARE TYPICAL FOR EACH COLUMN AND FOOTING.
 DIMENSIONS AND PILE LOCATIONS ARE TYPICAL FOR EACH FOOTING.

DOCUMENT NOT CONSIDERED FINAL
 UNLESS ALL SIGNATURES COMPLETED

NO.	BY:	DATE:	REVISIONS			SHEET NO.
			NO.	BY:	DATE:	
1			3			TOTAL SHEETS
2			4			33

Michael Baker International
 Michael Baker Engineering
 8000 Regency Parkway, Suite 600
 Cary, North Carolina 27518
 NC License No.: F-1084