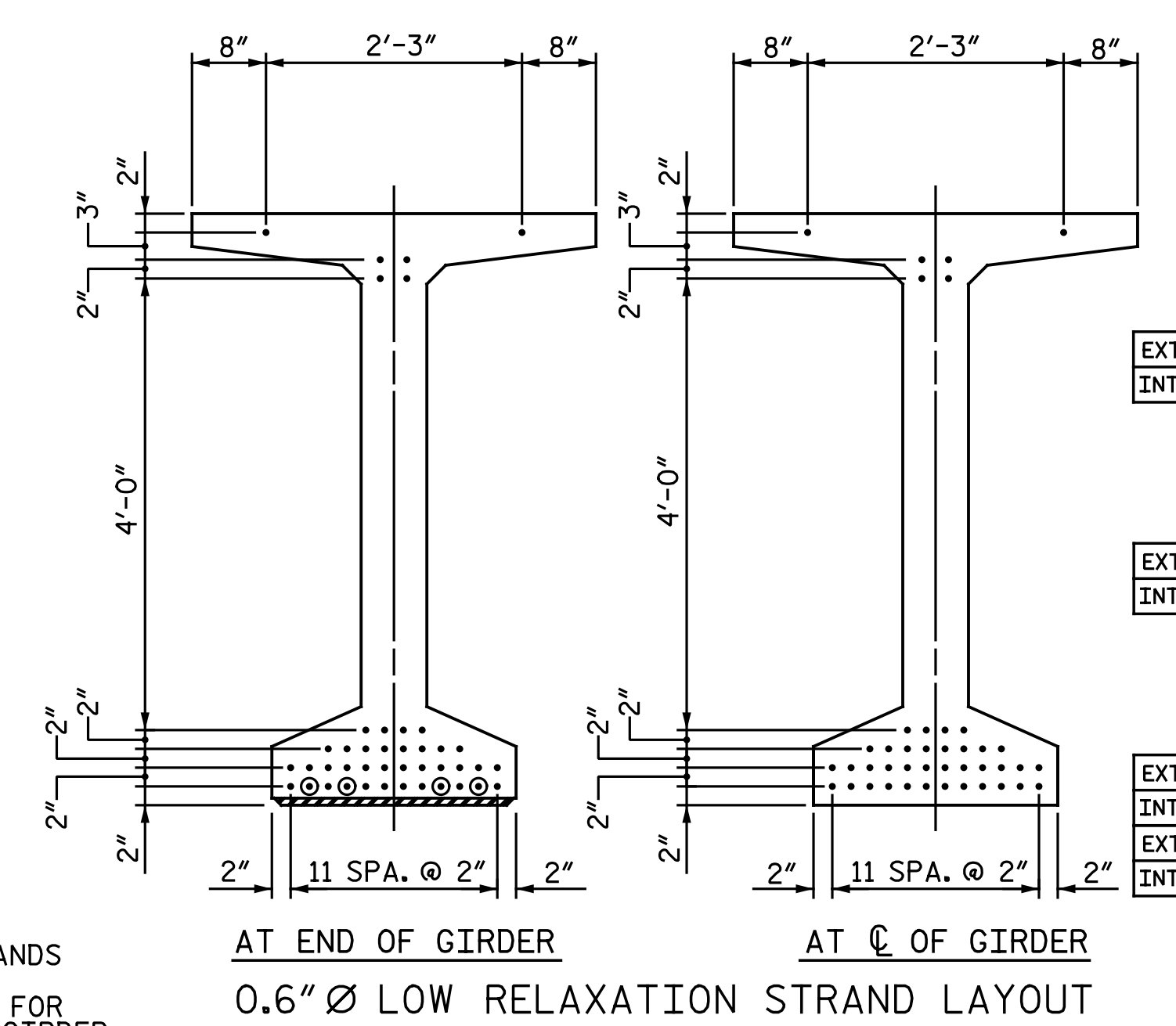


1/2" Ø FORMED HOLE. SEE ELEVATION FOR LOCATION. FOR DIM. "A", "B" & "C" SEE "INTERMEDIATE STEEL DIAPHRAGMS" SHEET.

- DEBONDING LEGEND
- FULLY BONDED STRANDS
  - STRANDS DEBONDED FOR 8'-0" FROM END OF GIRDER



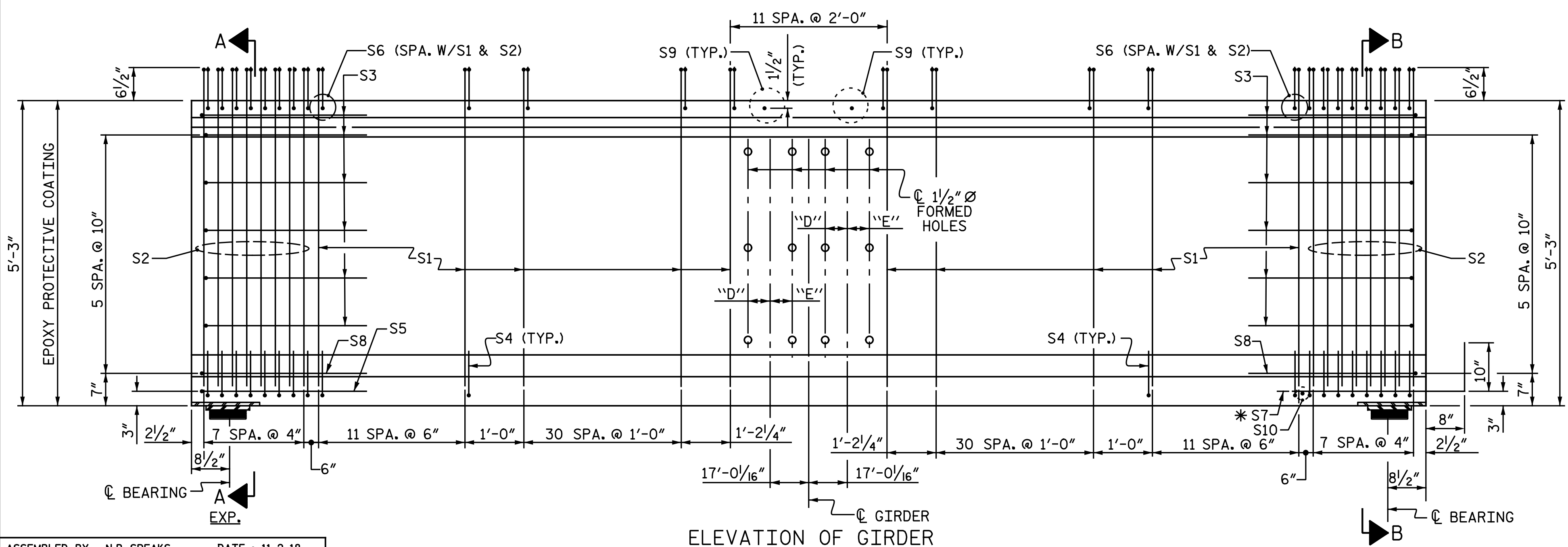
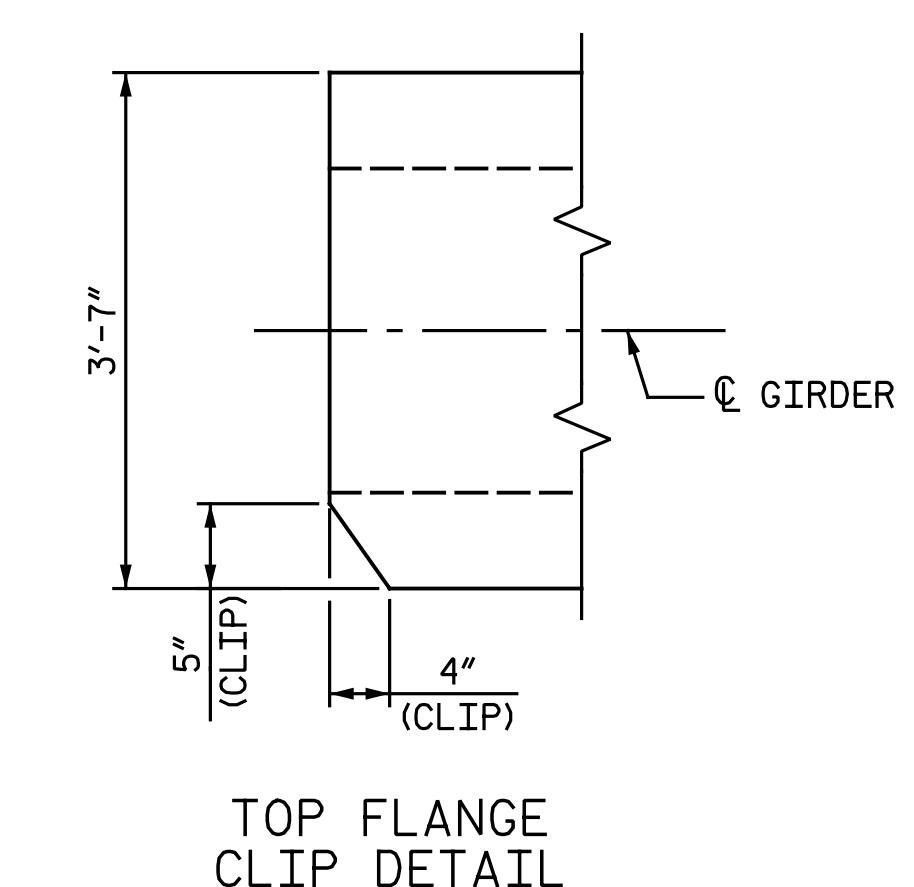
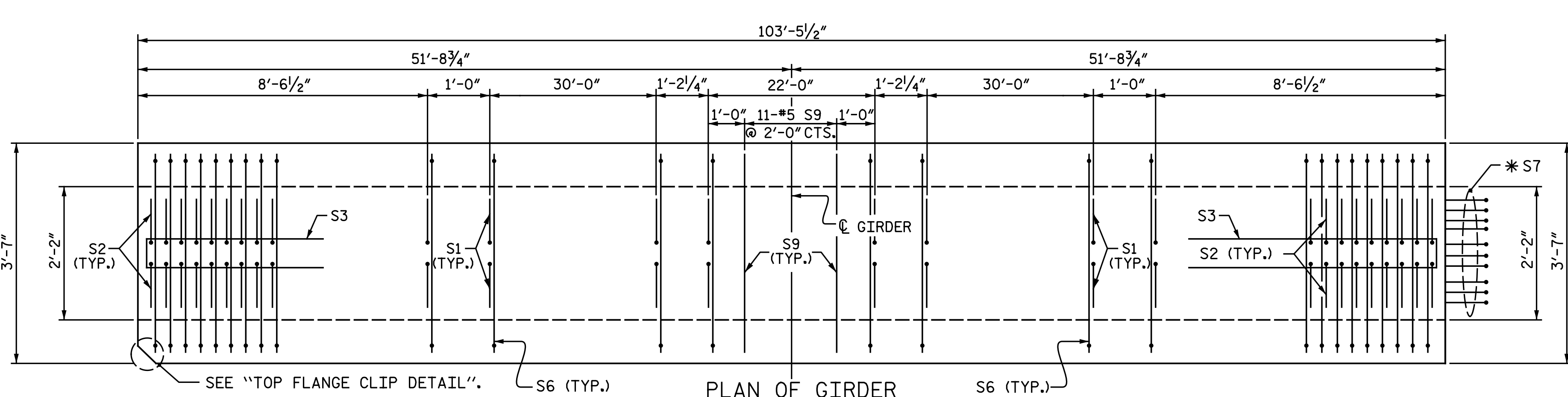
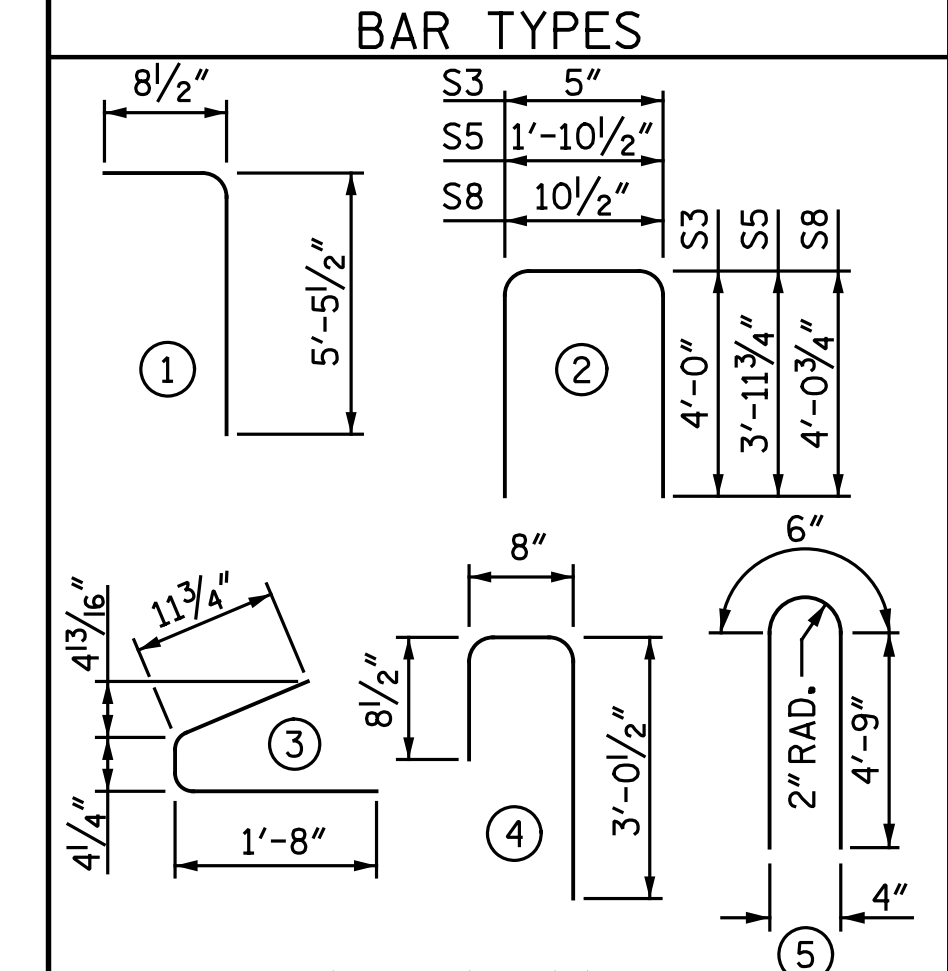
0.6" Ø L. R. GRADE 270 STRANDS

AREA (SQUARE INCHES)	ULTIMATE STRENGTH (LBS. PER STRAND)	APPLIED PRESTRESS (LBS. PER STRAND)
0.217	58,600	43,950

REINFORCING STEEL FOR ONE GDR

BAR	NUMBER	SIZE	TYPE	LENGTH	WEIGHT
EXTERIOR GDR. S1	196	#4	1	6'-2"	807
INTERIOR GDR. S1	196	#4	1	6'-2"	807
S2	32	#6	1	6'-2"	296
S3	12	#4	2	8'-5"	67
S4	80	#4	3	3'-0"	160
S5	1	#5	2	9'-10"	10
EXTERIOR GDR. S6	228	#5	4	4'-5"	1,050
INTERIOR GDR. S6	228	#5	4	4'-5"	1,050
*S7	10	#5	STR	3'-8"	38
S8	2	#5	2	9'-0"	19
S9	11	#5	STR	3'-3"	37
S10	1	#3	STR	1'-10"	1
EXTERIOR GDR. S11	8	#5	5	10'-0"	83
INTERIOR GDR. S11	16	#5	5	10'-0"	167
EXTERIOR GDR. S12	16	#4	STR	8'-0"	86
INTERIOR GDR. S13	16	#4	STR	17'-0"	182

\* NOTE: S7 BARS SHALL BE BENT BEFORE SHIPMENT. HEAT BENDING SHALL NOT BE ALLOWED.



FORMED HOLE LOCATIONS

GIRDER	"D"	"E"
1	N/A	4'-6"
2	4'-6"	4'-6"
3	4'-6"	4'-6"
4	4'-6"	4'-6"
5	4'-6"	N/A

QUANTITIES FOR ONE GIRDER

	REINFORCING STEEL		8,500 PSI CONCRETE	0.6" Ø L.R. STRANDS
	LB.	C.Y.		No.
EXTERIOR GIRDER	2,654	20.5		42
INTERIOR GIRDER	2,834	20.5		42

GIRDERS REQUIRED

SPAN	NUMBER	LENGTH	TOTAL LENGTH
A	5	103.46'	517.29'
B	5	103.46'	517.29'
TOTAL	10	103.46'	1034.58'

PROJECT NO. I-5883  
 HARNETT COUNTY  
 STATION: 26+80.73 -Y17-

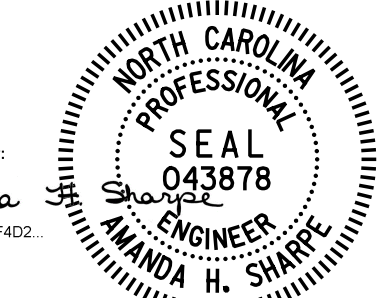
ASSEMBLED BY : N.B. SPEAKS DATE : 11-2-18  
 CHECKED BY : A.H. SHARPE DATE : 11-5-18  
 DRAWN BY : EEM 2/6/97 REV. 6/13 MAA/GM  
 CHECKED BY : VAP 2/6/97 REV. 1/15 MAA/TMG  
 REV. 12/17 MAA/THC

(SEE PARTIAL ELEVATION ON "PRESTRESSED CONCRETE GIRDER CONTINUOUS FOR LIVE LOAD DETAILS" SHEET FOR ADDITIONAL "S" BARS)  
 (SPAN A SHOWN, SPAN B SIMILAR BY ROTATION)

DOCUMENT NOT CONSIDERED FINAL UNLESS ALL SIGNATURES COMPLETED

**Michael Baker INTERNATIONAL**

Michael Baker Engineering  
 8000 Regency Parkway, Suite 600  
 Cary, North Carolina 27518  
 NC License No. : F-1084



STATE OF NORTH CAROLINA  
 DEPARTMENT OF TRANSPORTATION  
 RALEIGH

STANDARD  
 63" PRESTRESSED CONCRETE MODIFIED BULB TEE CONTINUOUS FOR LIVE LOAD

SPANS A & B

REVISIONS					SHEET NO.
NO.	BY:	DATE:	NO.	BY:	DATE:
1			3		
2			4		

TOTAL SHEETS: 33