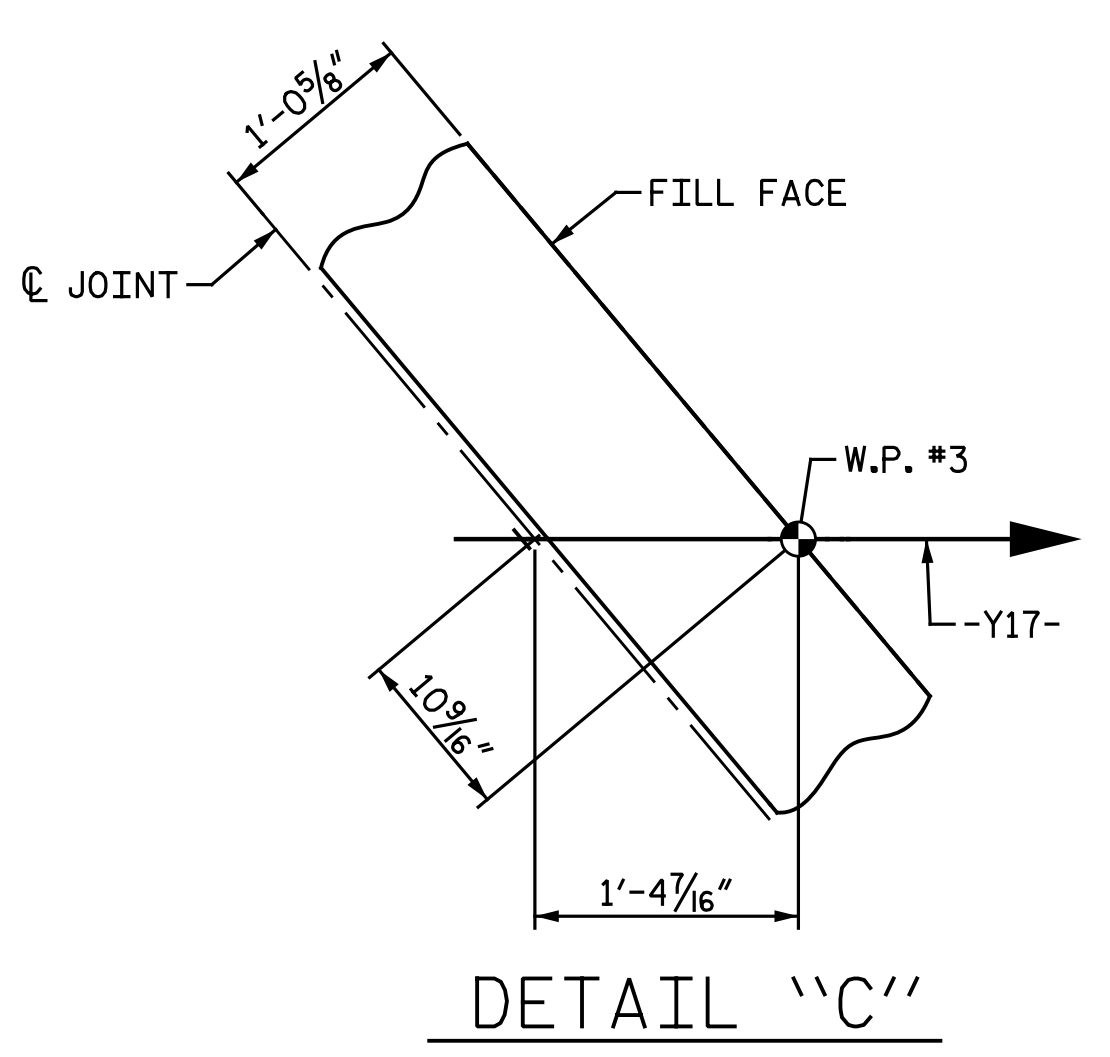


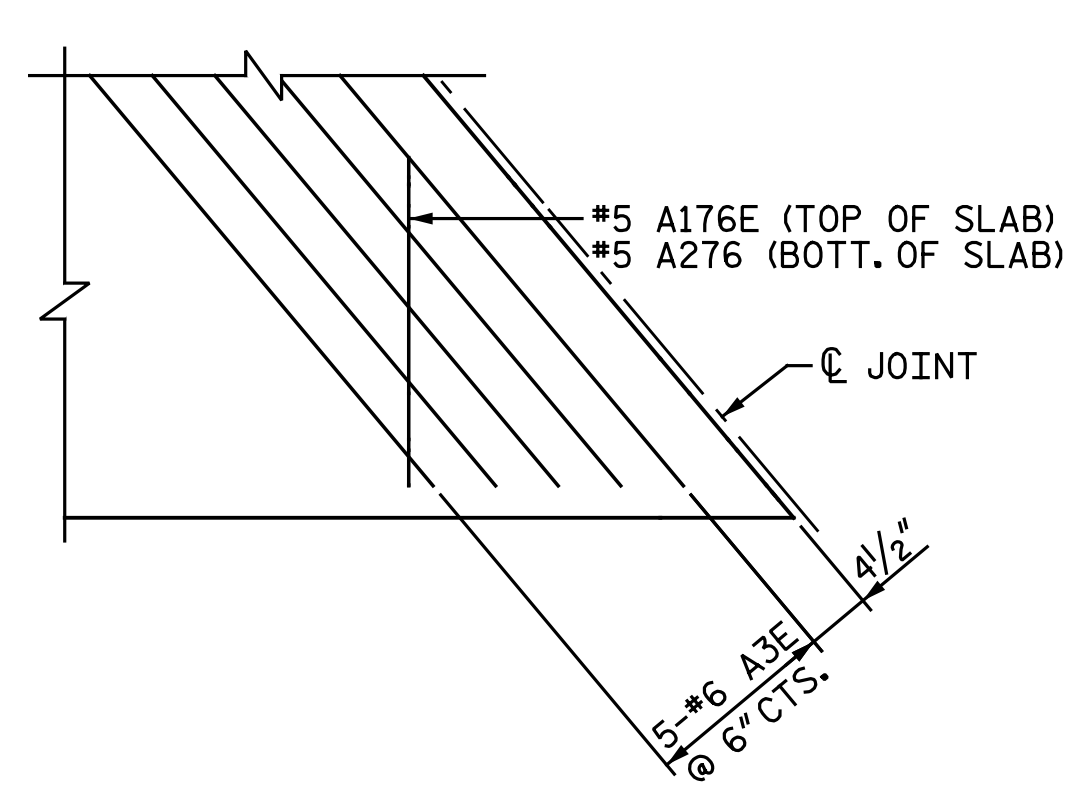
- NOTES:**
- Ⓐ 33-#4 B1E @ 1'-6" CTS. (SPLICE WITH #6 B3E) (TOP OF SLAB)
 - Ⓑ 33-#6 B3E @ 1'-6" CTS. (SPLICE WITH #4 B1E) (TOP OF SLAB)
 - Ⓒ 64-#6 B4E (SPA. AS SHOWN IN "TYPICAL SECTION" SHEET 3 OF 3) (STAGGERED AS SHOWN) (TOP OF SLAB)



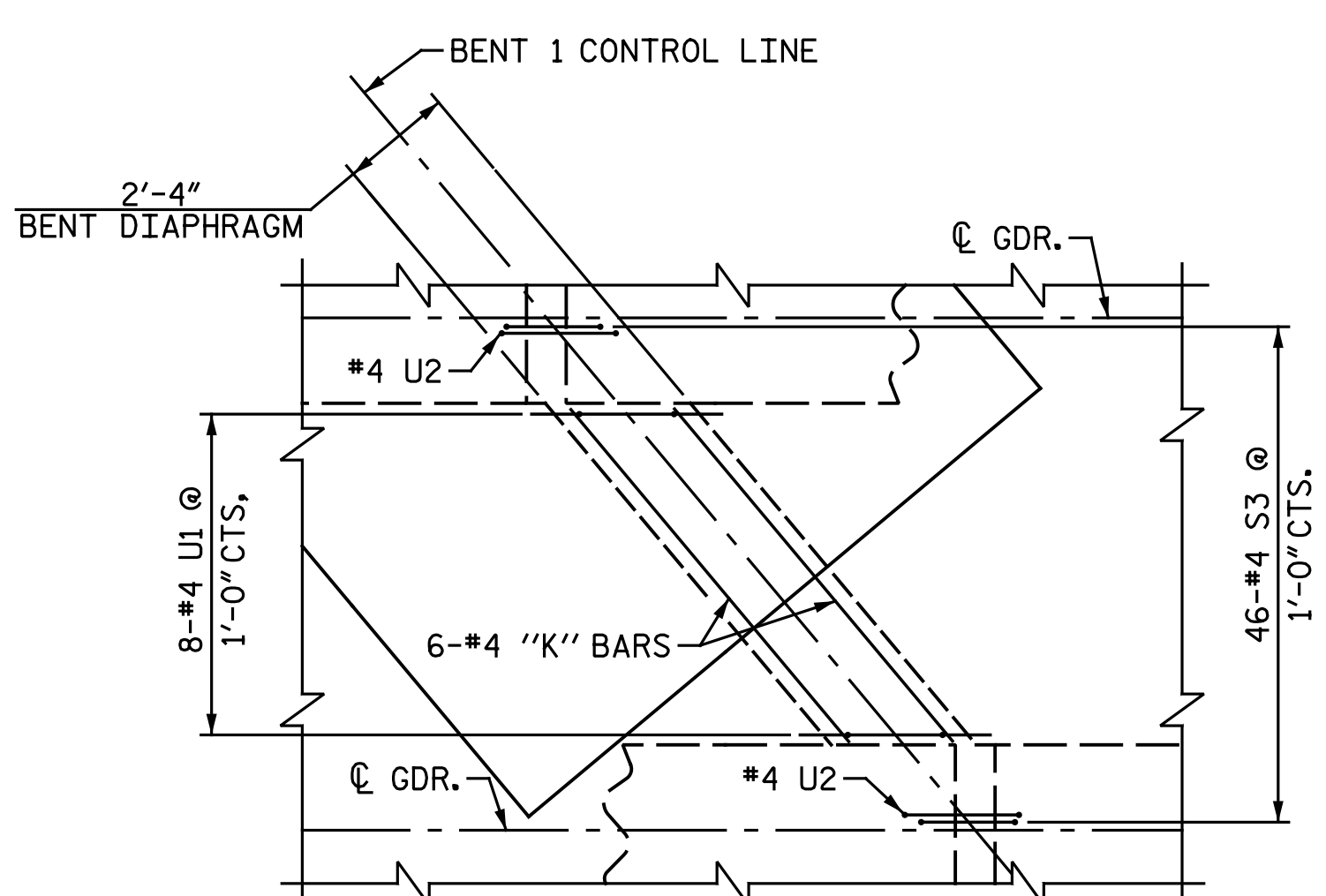
SPAN A
SPAN B
PLAN OF SPAN

SPLICE LENGTHS		
BAR SIZE	EPOXY COATED	UNCOATED
#4	2'-0"	1'-9"
#5	2'-6"	2'-2"
#6	3'-0"	2'-7"

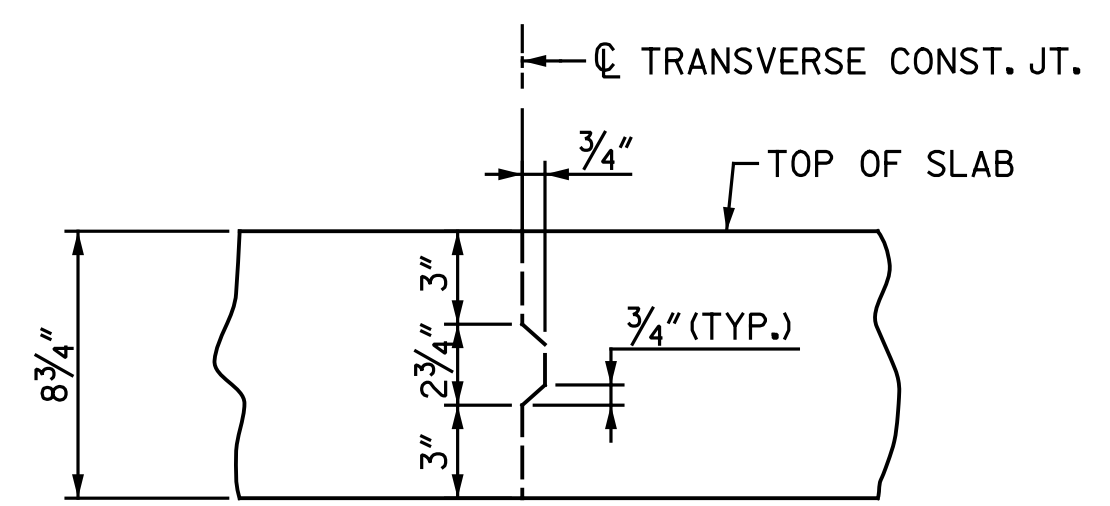
PROJECT NO. I-5883
HARNETT COUNTY
 STATION: 26+80.73 -Y17-
 SHEET 2 OF 2



DETAIL "D"

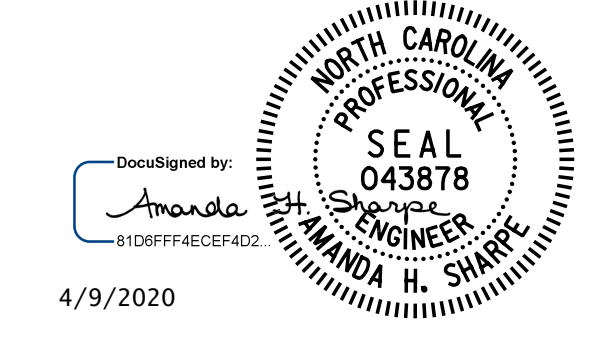


BENT DIAPHRAGM DETAIL
 K8 & K9 BARS NOT SHOWN FOR CLARITY (TYP. EA. BAY)



TRANSVERSE CONST. JT. DETAIL

REINFORCING STEEL IN SLAB NOT SHOWN.
 REINFORCING STEEL SHALL BE CONTINUOUS THROUGH JOINT.



4/9/2020

* #6 A3E BARS ARE TO BE PLACED PARALLEL TO SKEW, SPACED AS SHOWN, AND LOCATED BELOW B1E BARS.
 SEE ALSO "SECTION THRU END BENT DIAPHRAGM" DETAIL ON "TYPICAL SECTION" SHEET 2 OF 3.

DRAWN BY : C. E. MAYHEW DATE : 8-31-18
 CHECKED BY : A. H. SHARPE DATE : 11-8-18

DOCUMENT NOT CONSIDERED FINAL
 UNLESS ALL SIGNATURES COMPLETED

REVISIONS						SHEET NO. S2-9
NO.	BY:	DATE:	NO.	BY:	DATE:	
1			3			TOTAL SHEETS
2			4			33

Michael Baker International
 Michael Baker Engineering
 8000 Regency Parkway, Suite 600
 Cary, North Carolina 27518
 NC License No. : F-1084