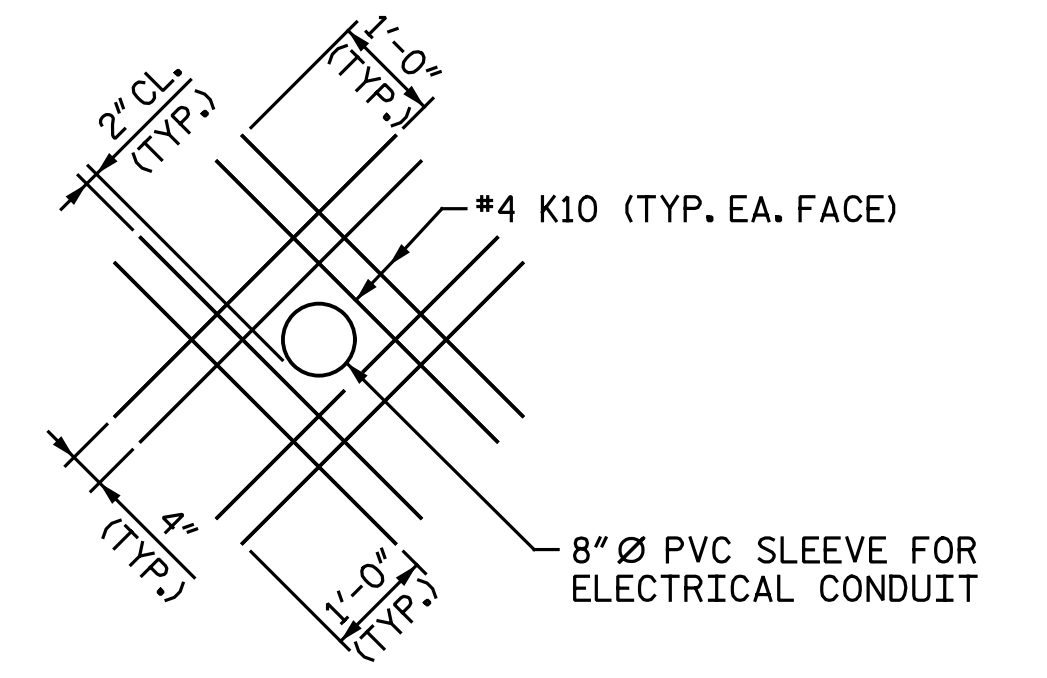
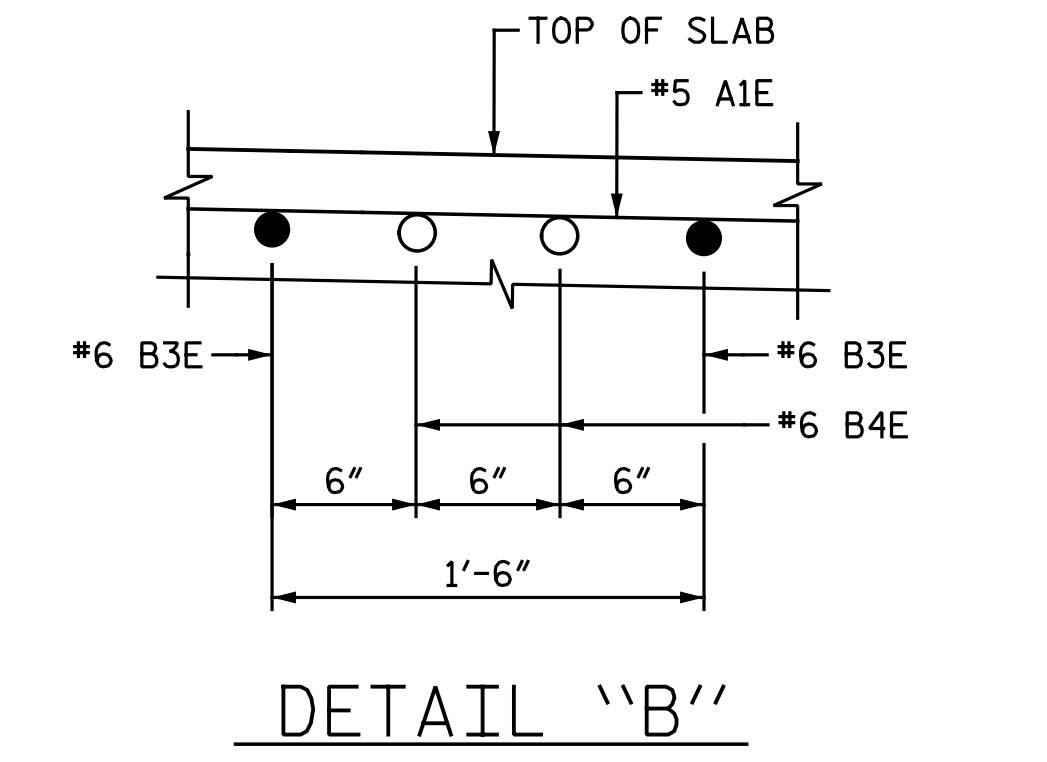


TYPICAL SECTION AT BENT DIAPHRAGM

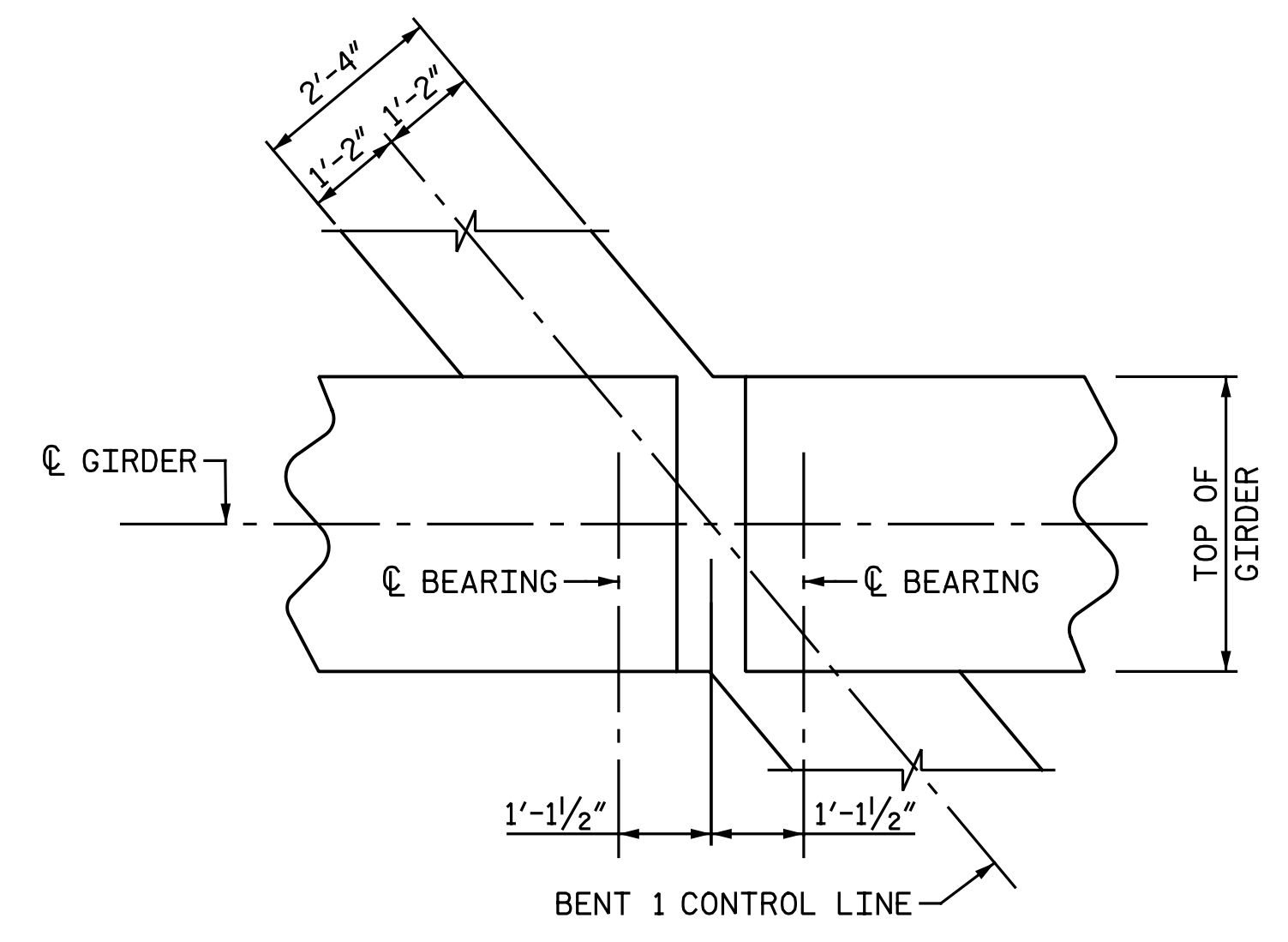
** FOR ELECTRICAL CONDUIT SYSTEM FOR SIGNALS, SEE "ELECTRICAL CONDUIT SYSTEM FOR SIGNALS" SHEET.



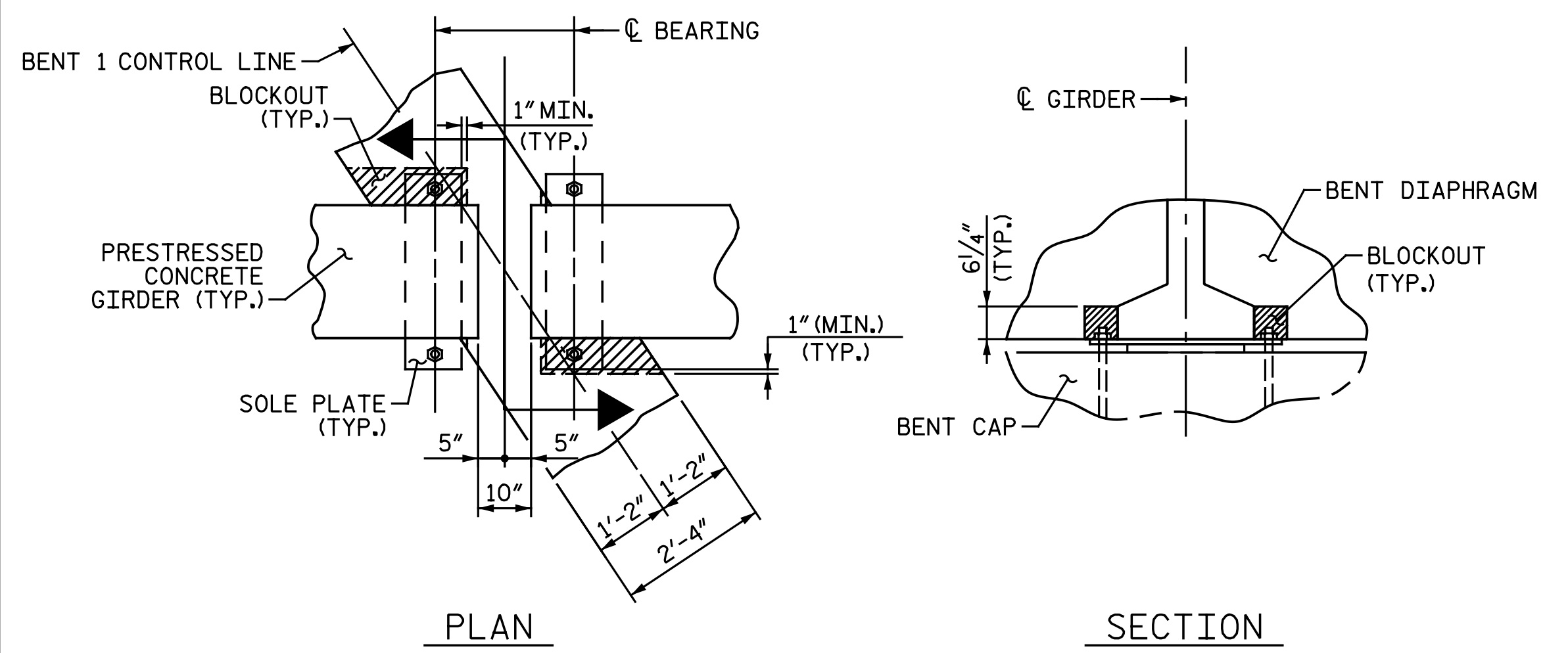
DETAIL "E"
THE PVC SLEEVE THROUGH THE DIAPHRAGM SHALL BE LOCATED BY THE ENGINEER.



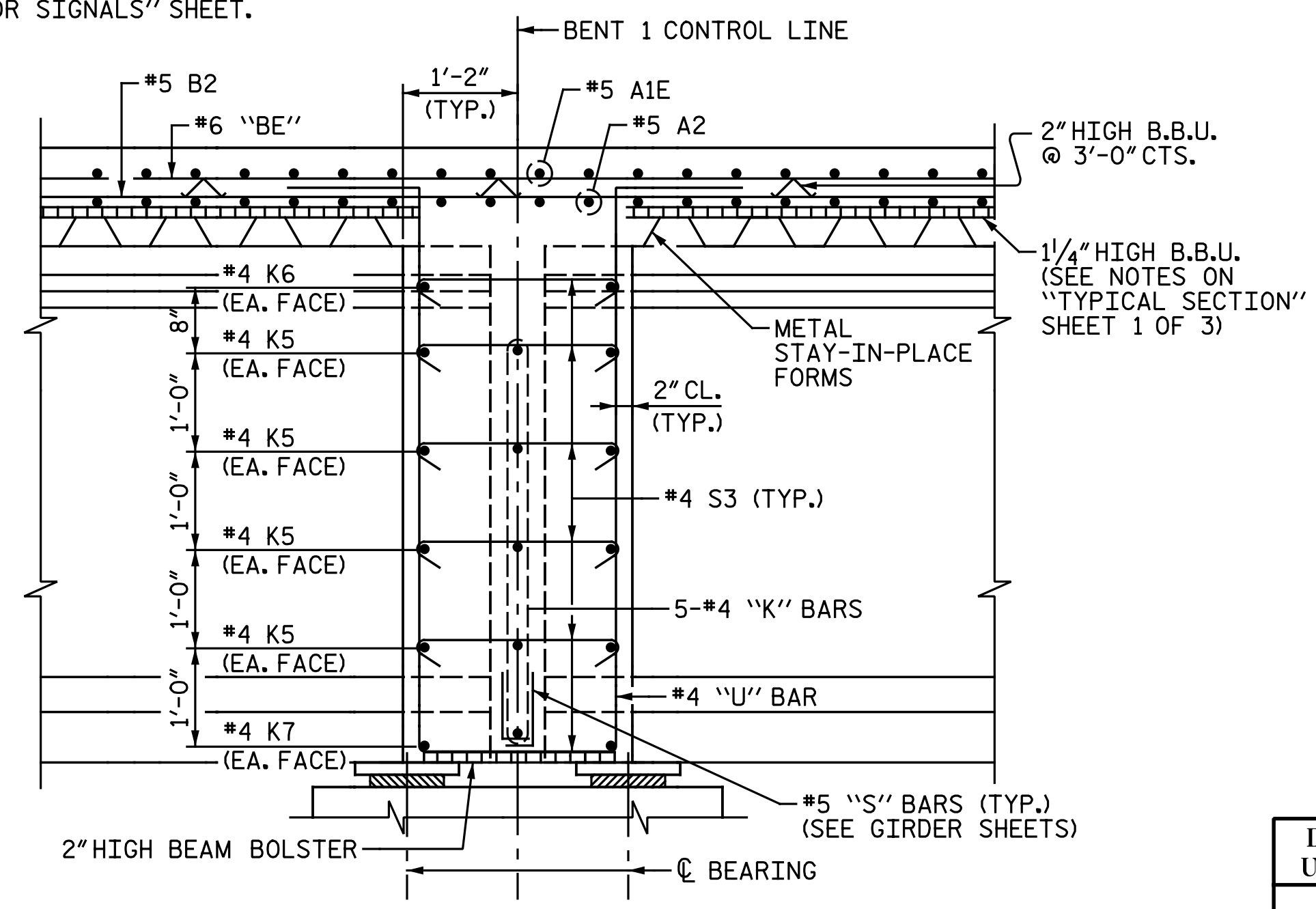
DETAIL "B"



PLAN AT BENT DIAPHRAGM



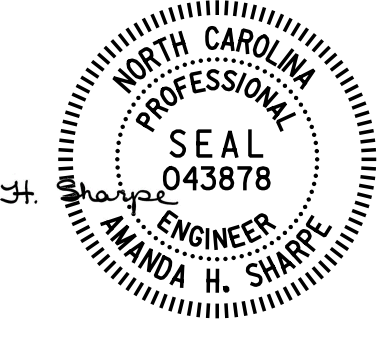
PLAN
SECTION
BENT DIAPHRAGM BLOCKOUT DETAIL



SECTION THRU BENT DIAPHRAGM

PROJECT NO. I-5883
HARNETT COUNTY
STATION: 26+80.73 -Y17-
SHEET 3 OF 3

DocuSigned by:
Amanda H. Sharpe
4/9/2020



STATE OF NORTH CAROLINA
DEPARTMENT OF TRANSPORTATION
RALEIGH
SUPERSTRUCTURE
TYPICAL SECTION

DRAWN BY: C. E. MAYHEW DATE: 1-10-19
CHECKED BY: A. H. SHARPE DATE: 1-10-19

DOCUMENT NOT CONSIDERED FINAL
UNLESS ALL SIGNATURES COMPLETED

NO.	BY:	DATE:	REVISIONS		SHEET NO.
			NO.	DATE:	
1			3		S2-7
2			4		TOTAL SHEETS 33