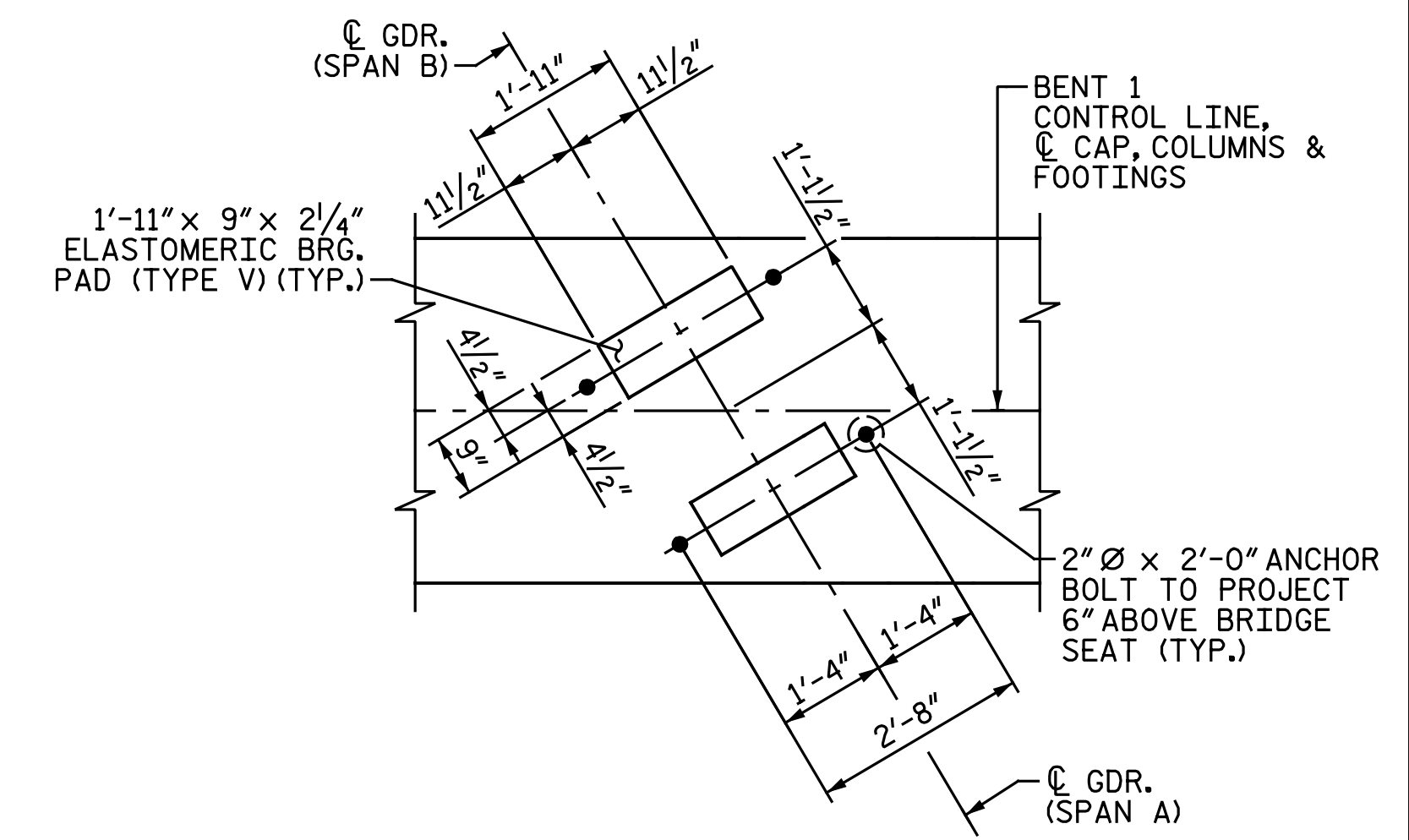
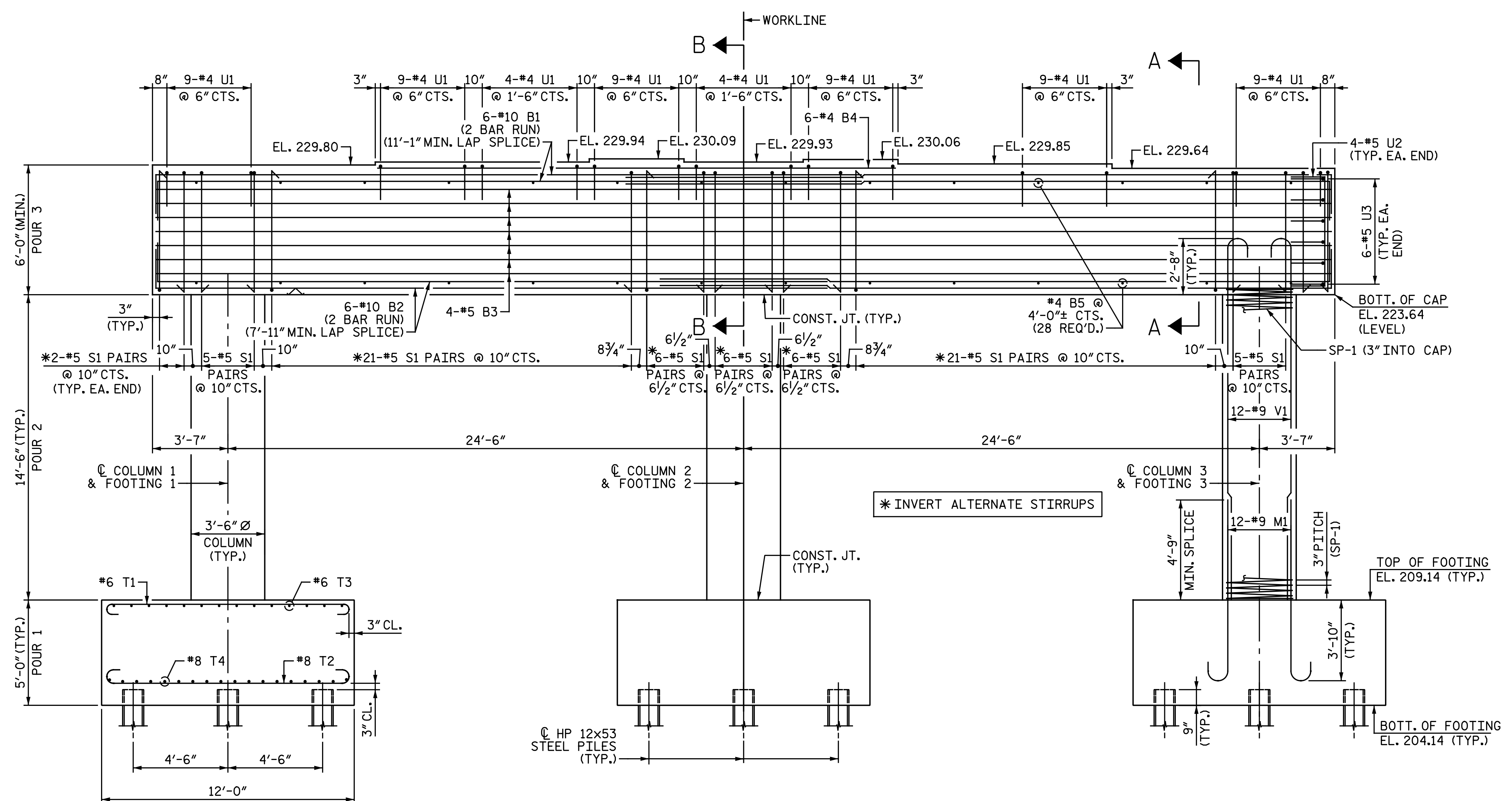


PLAN

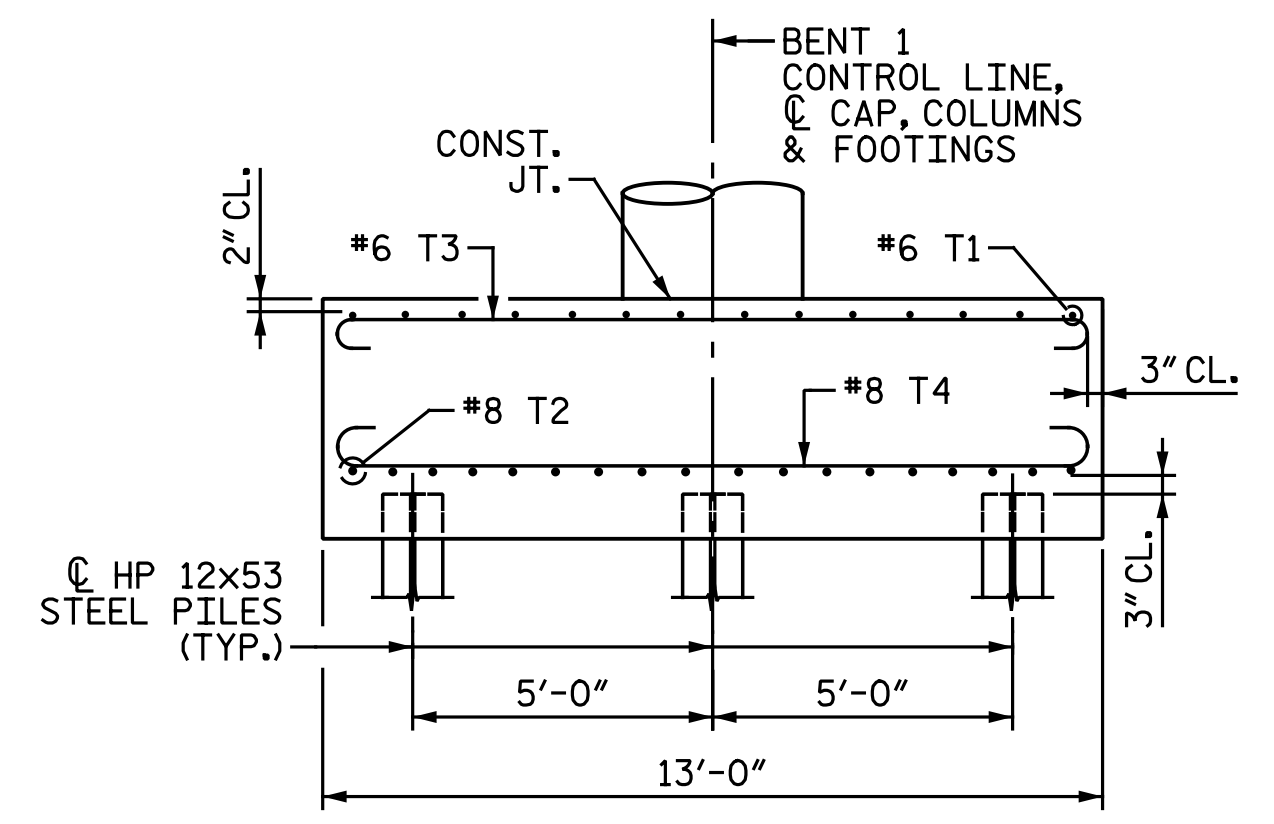
NOTES:
 STIRRUPS AND "U" BARS IN CAP MAY BE SHIFTED AS NECESSARY TO CLEAR ANCHOR BOLTS AND COLUMN REINFORCING STEEL.
 FOR "SECTION A-A", "SECTION B-B", SEE "BENT 1 DETAILS" SHEET 2 OF 2.
 HOOKS ON "V" BARS MAY BE TURNED AS NECESSARY FOR PLACING REINFORCING STEEL.
 FOR PILE SPLICE DETAILS, SEE "END BENT 2 DETAILS" SHEET.



DETAIL "A"
(TYP. EA. BRIDGE SEAT)

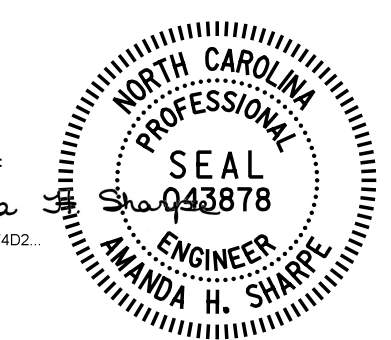


ELEVATION



PARTIAL END ELEVATION
(FOR COLUMN REINFORCING STEEL, SEE ELEVATION)

PROJECT NO. I-5883
 HARNETT COUNTY
 STATION: 27+09.19 -Y16-



STATE OF NORTH CAROLINA
 DEPARTMENT OF TRANSPORTATION
 RALEIGH
 SUBSTRUCTURE
 BENT 1

DRAWN BY: M. D. MAYHEW DATE: 2-1-20
 CHECKED BY: A. H. SHARPE DATE: 3-27-20

REINFORCING STEEL DIMENSIONS AND DETAILS ARE TYPICAL FOR EACH COLUMN AND FOOTING.
 DIMENSIONS AND PILE LOCATIONS ARE TYPICAL FOR EACH FOOTING.

DOCUMENT NOT CONSIDERED FINAL
 UNLESS ALL SIGNATURES COMPLETED

Michael Baker INTERNATIONAL Michael Baker Engineering 8000 Regency Parkway, Suite 600 Cary, North Carolina 27518 NC License No.: F-1084	REVISIONS						SHEET NO. SI-25 TOTAL SHEETS 35
	NO.	BY:	DATE:	NO.	BY:	DATE:	
	1			3			
	2			4			