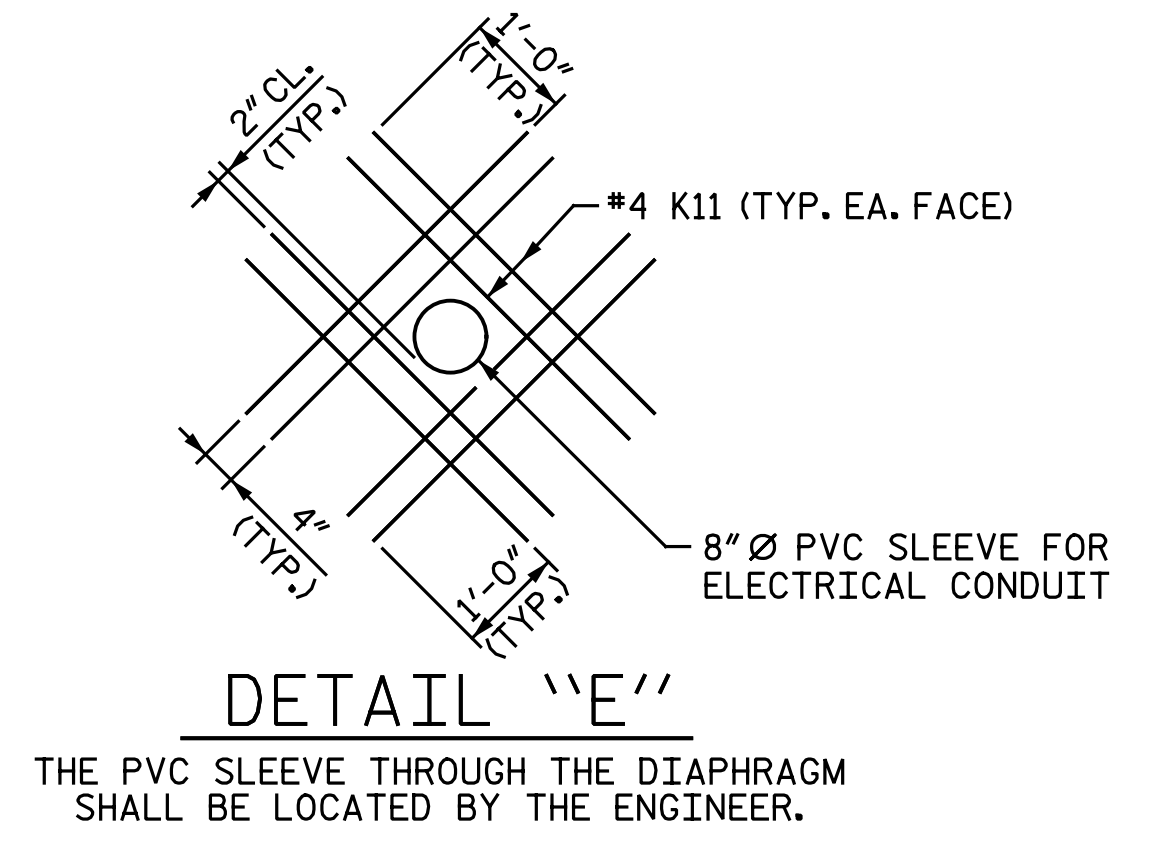
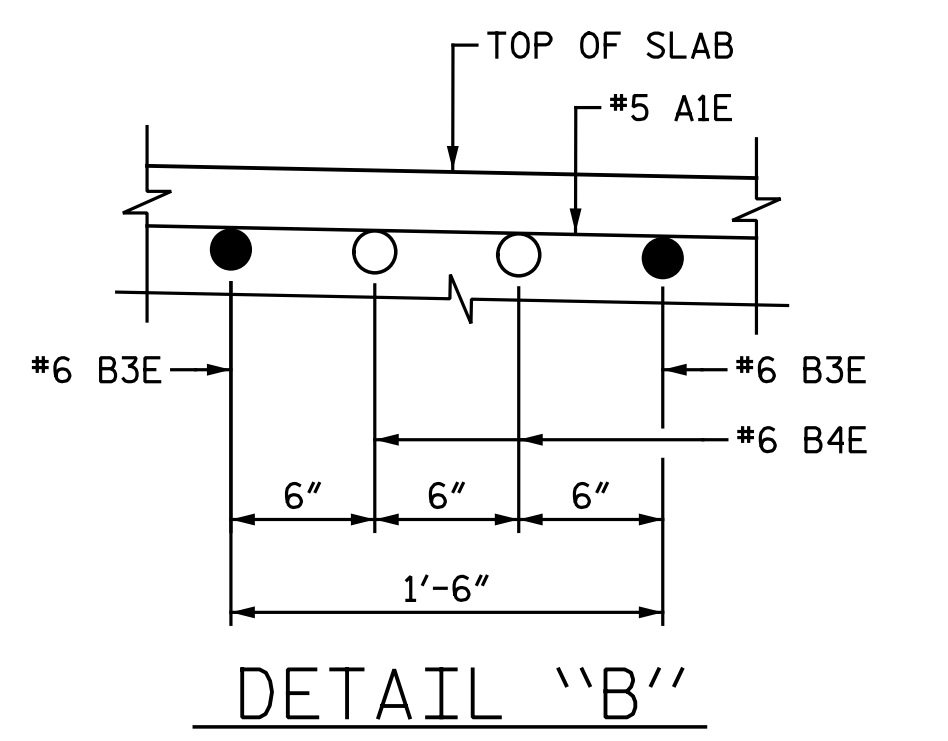


TYPICAL SECTION @ BENT DIAPHRAGM

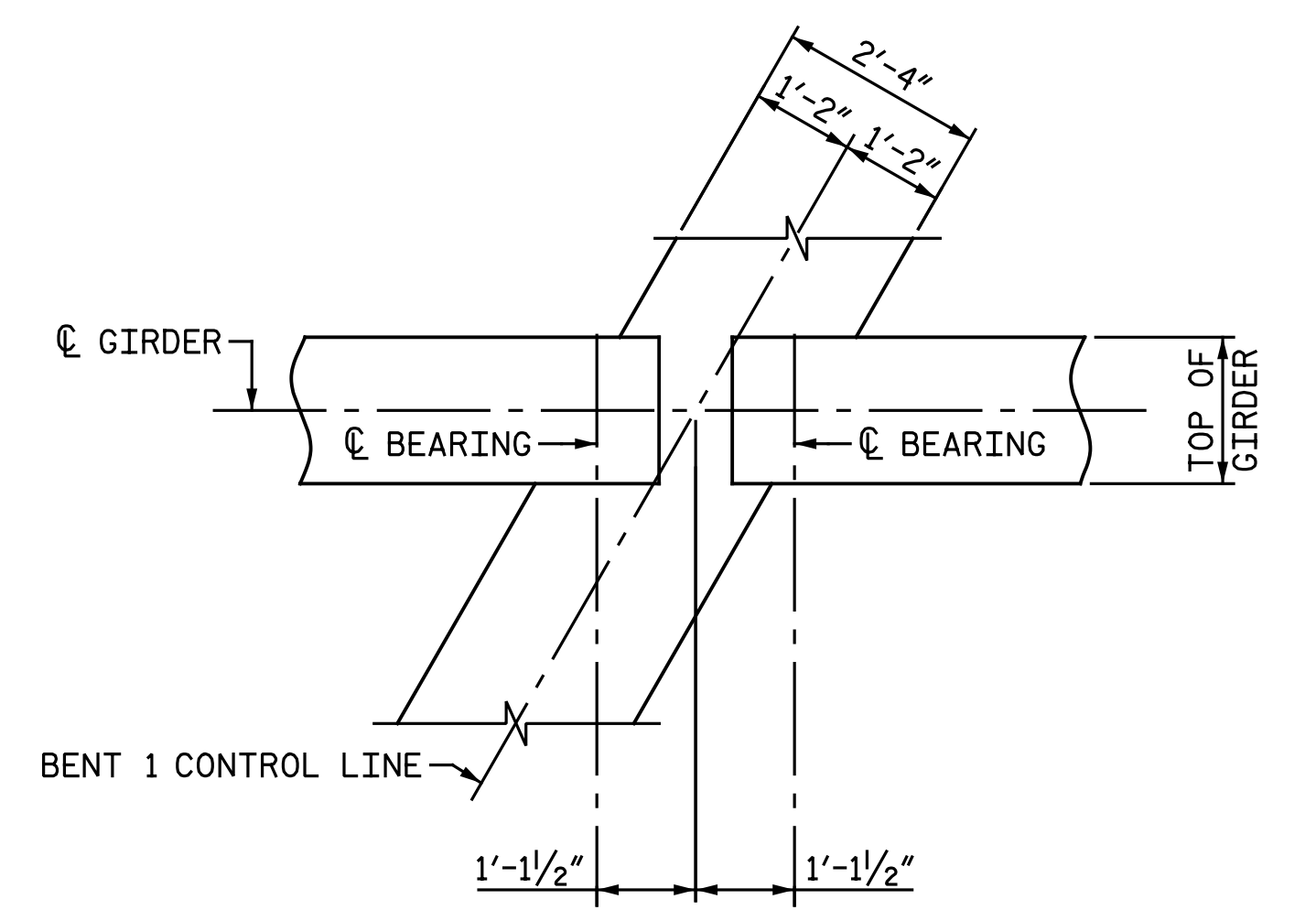
** FOR ELECTRICAL CONDUIT SYSTEM FOR SIGNALS, SEE "ELECTRICAL CONDUIT SYSTEM FOR SIGNALS" SHEET.



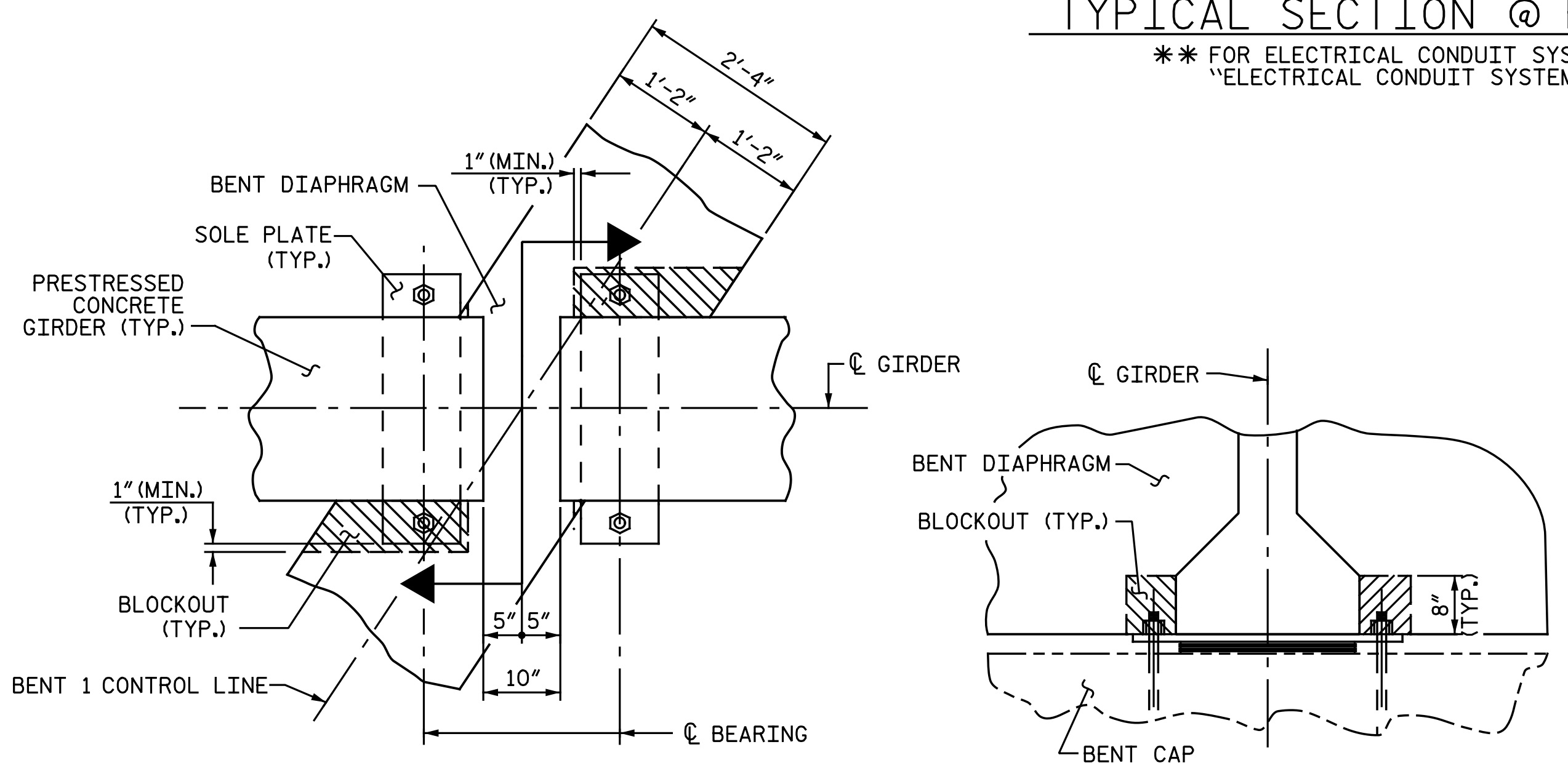
THE PVC SLEEVE THROUGH THE DIAPHRAGM SHALL BE LOCATED BY THE ENGINEER.



DETAIL "B"

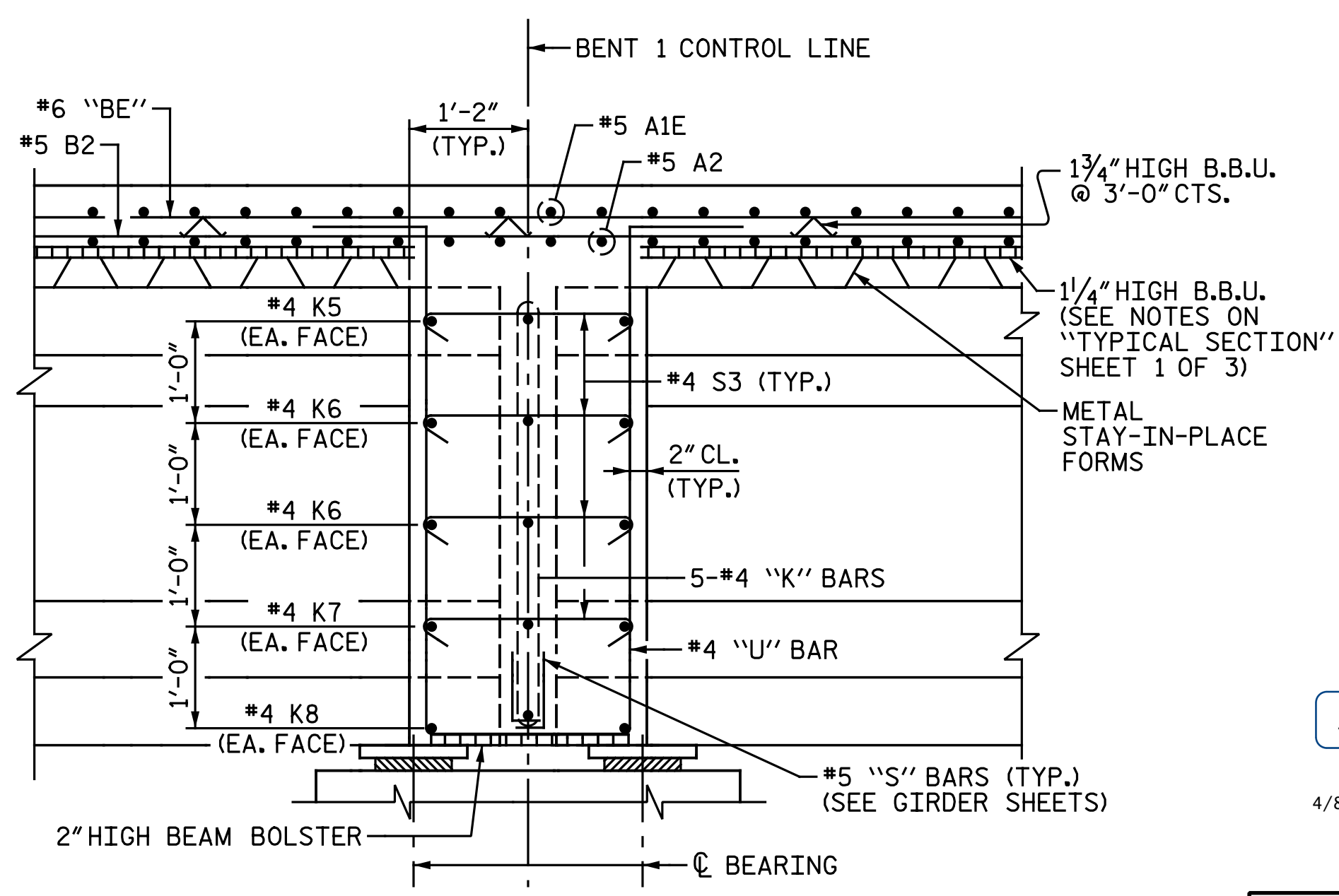


PLAN AT BENT DIAPHRAGM



PLAN SECTION

BENT DIAPHRAGM BLOCKOUT DETAIL



SECTION THROUGH BENT DIAPHRAGM

DocuSigned by:
Amanda H. Sharpe
81DFFFAECF4D2

4/8/2020



PROJECT NO. I-5883
HARNETT COUNTY
STATION: 27+09.19 -Y16-
SHEET 3 OF 3

STATE OF NORTH CAROLINA
DEPARTMENT OF TRANSPORTATION
RALEIGH
SUPERSTRUCTURE
TYPICAL SECTION

DOCUMENT NOT CONSIDERED FINAL
UNLESS ALL SIGNATURES COMPLETED

NO.	BY:	DATE:	REVISIONS		SHEET NO.
			NO.	DATE:	
1			3		SI-7
2			4		TOTAL SHEETS 35

DRAWN BY: C. E. MAYHEW DATE: 1-9-19
CHECKED BY: A. H. SHARPE DATE: 3-26-20

Michael Baker International
Michael Baker Engineering
8000 Regency Parkway, Suite 600
Cary, North Carolina 27518
NC License No.: F-1084