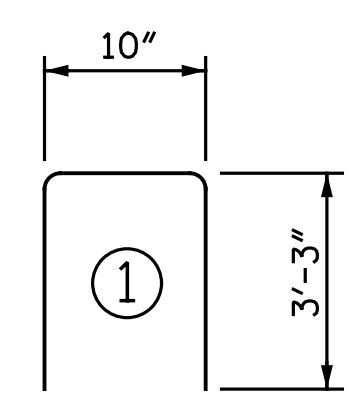


NOTES

ALL REINFORCING STEEL IN PARAPETS AND END POSTS SHALL BE EPOXY COATED.
 FOR DETAILS OF CONCRETE INSERTS IN END POSTS, SEE "RAIL POST SPACINGS AND END OF RAIL DETAILS" SHEET.
 GROOVED CONTRACTION JOINTS, 1/2" IN DEPTH, SHALL BE TOOLED IN ALL EXPOSED FACES OF THE PARAPET AND END POSTS AND IN ACCORDANCE WITH ARTICLE 825-10(B) OF THE STANDARD SPECIFICATIONS. A CONTRACTION JOINT SHALL BE LOCATED AT EACH THIRD POINT BETWEEN PARAPET EXPANSION JOINTS. ONLY ONE CONTRACTION JOINT IS REQUIRED AT MIDPOINT OF PARAPET SEGMENTS LESS THAN 20 FEET IN LENGTH AND NO CONTRACTION JOINTS ARE REQUIRED FOR THOSE SEGMENTS LESS THAN 10 FEET IN LENGTH.
 THE #5 S1 AND S3 BARS SHALL BE INSTALLED USING AN ADHESIVE ANCHORING SYSTEM. THE YIELD LOAD FOR THE #5 BARS IS 18.6 KIPS. LEVEL TWO FIELD TESTING IS REQUIRED.

BAR TYPES



ALL BAR DIMENSIONS ARE OUT TO OUT

BILL OF MATERIAL

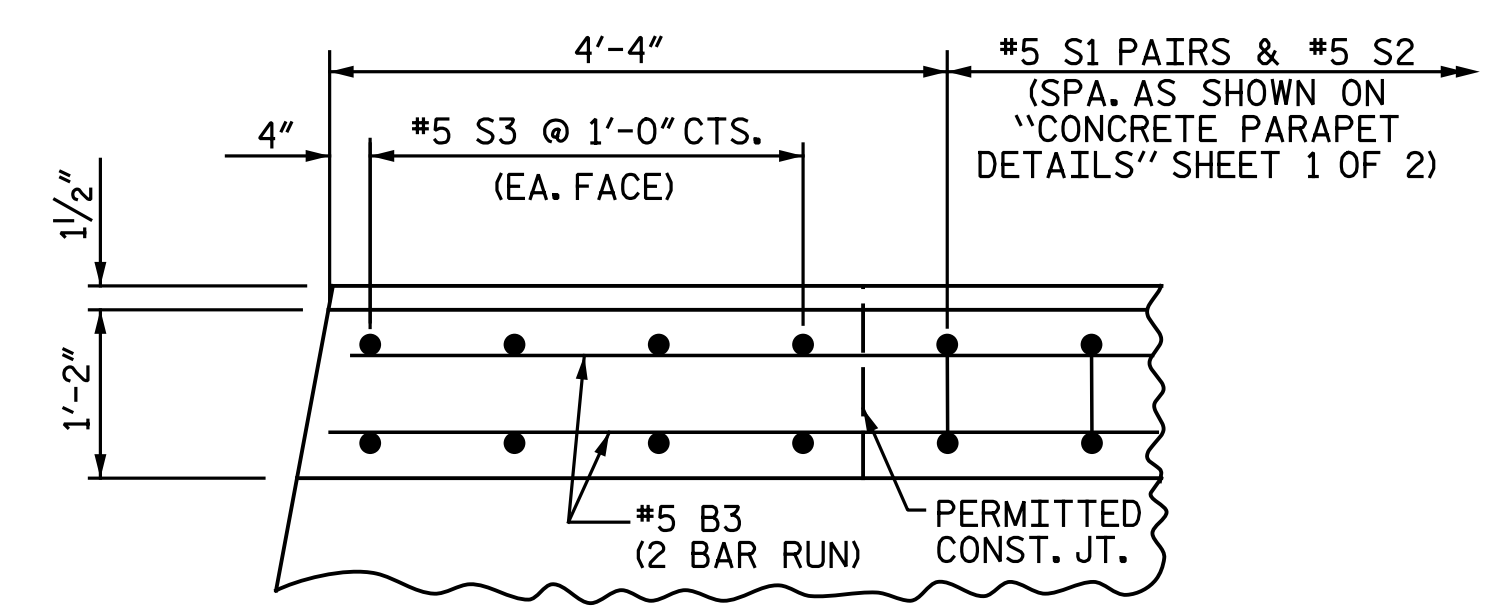
PROPOSED CONCRETE PARAPETS AND END POSTS

BAR NO.	NO.	SIZE	TYPE	LENGTH	WEIGHT
*B1	60	#5	STR.	26' - 1"	1,632
*B2	80	#5	STR.	24' - 1"	2,010
*B3	80	#5	STR.	13' - 11"	1,161
*E1	8	#7	STR.	3' - 8"	60
*E2	8	#7	STR.	4' - 1"	67
*E3	8	#7	STR.	4' - 7"	75
*E4	8	#7	STR.	5' - 1"	83
*E5	8	#7	STR.	5' - 5"	89
*F1	8	#6	STR.	1' - 8"	20
*F2	4	#6	STR.	3' - 0"	18
*F3	4	#6	STR.	3' - 9"	23
*F4	4	#6	STR.	3' - 2"	19
*F5	4	#6	STR.	3' - 11"	24
*S1	892	#5	STR.	3' - 6"	3,256
*S2	446	#5	1	7' - 4"	3,411
*S3	32	#5	STR.	3' - 11"	131

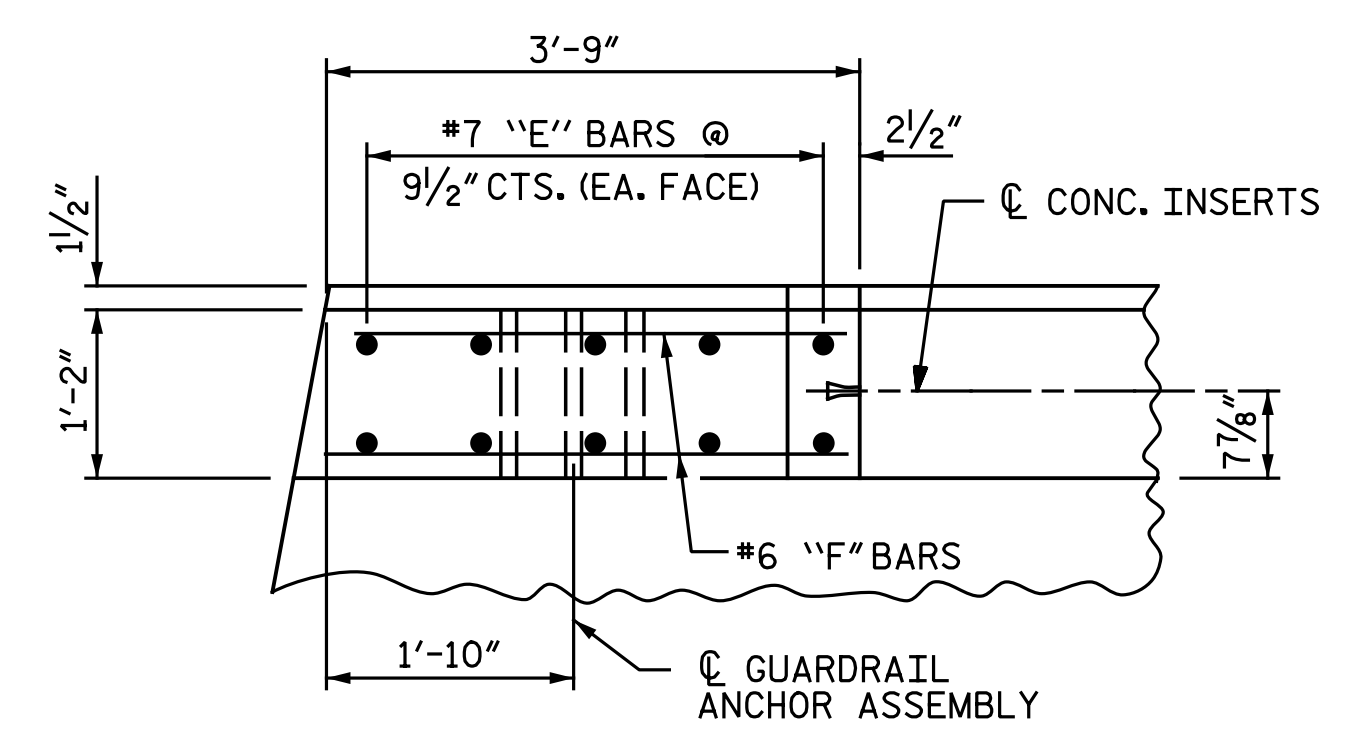
* EPOXY COATED REINFORCING STEEL LBS. 12,079

CLASS AA CONCRETE CU. YDS. 71.0

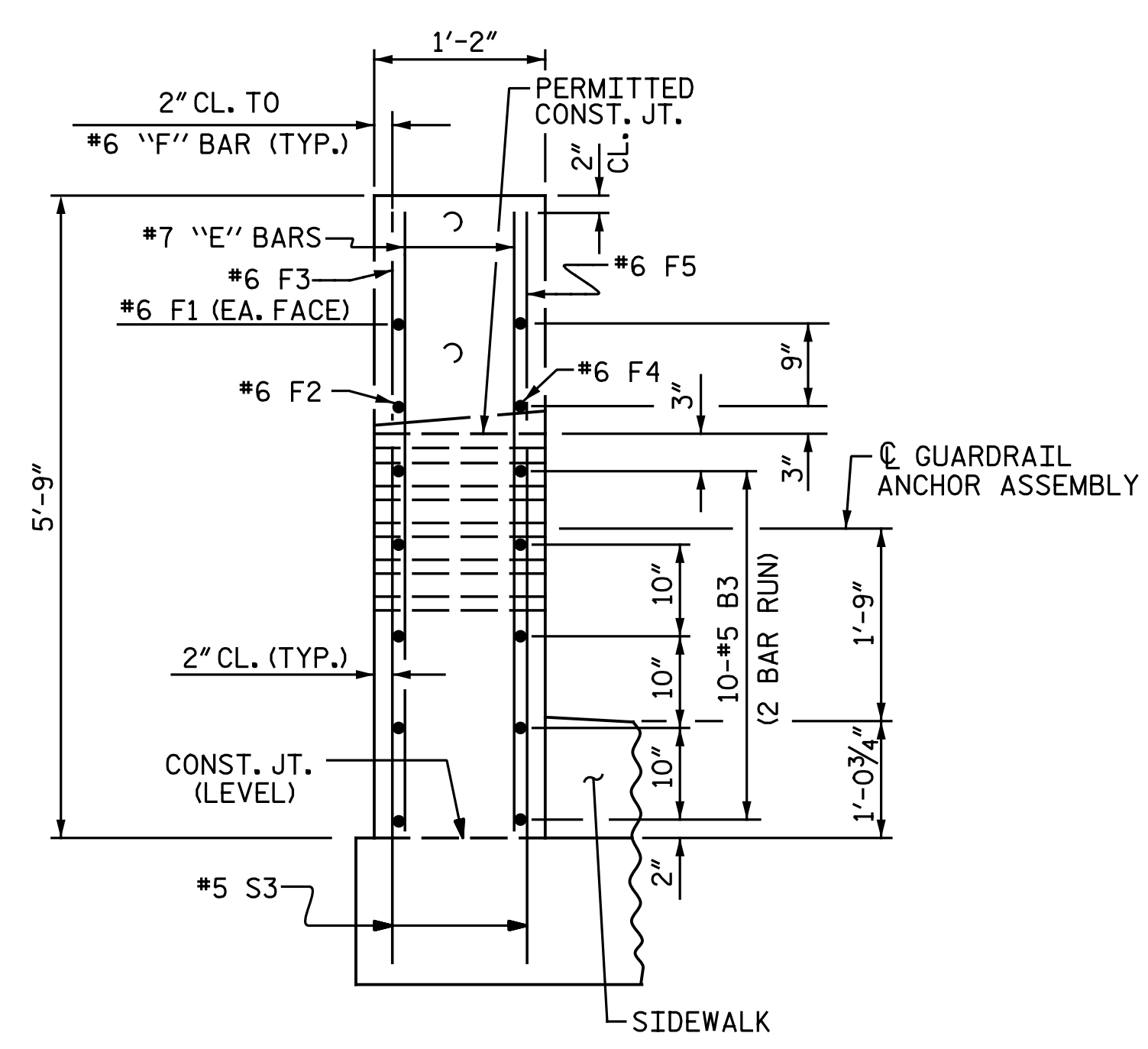
1'-2" x 3'-7" CONCRETE PARAPET LIN. FT. 453.67



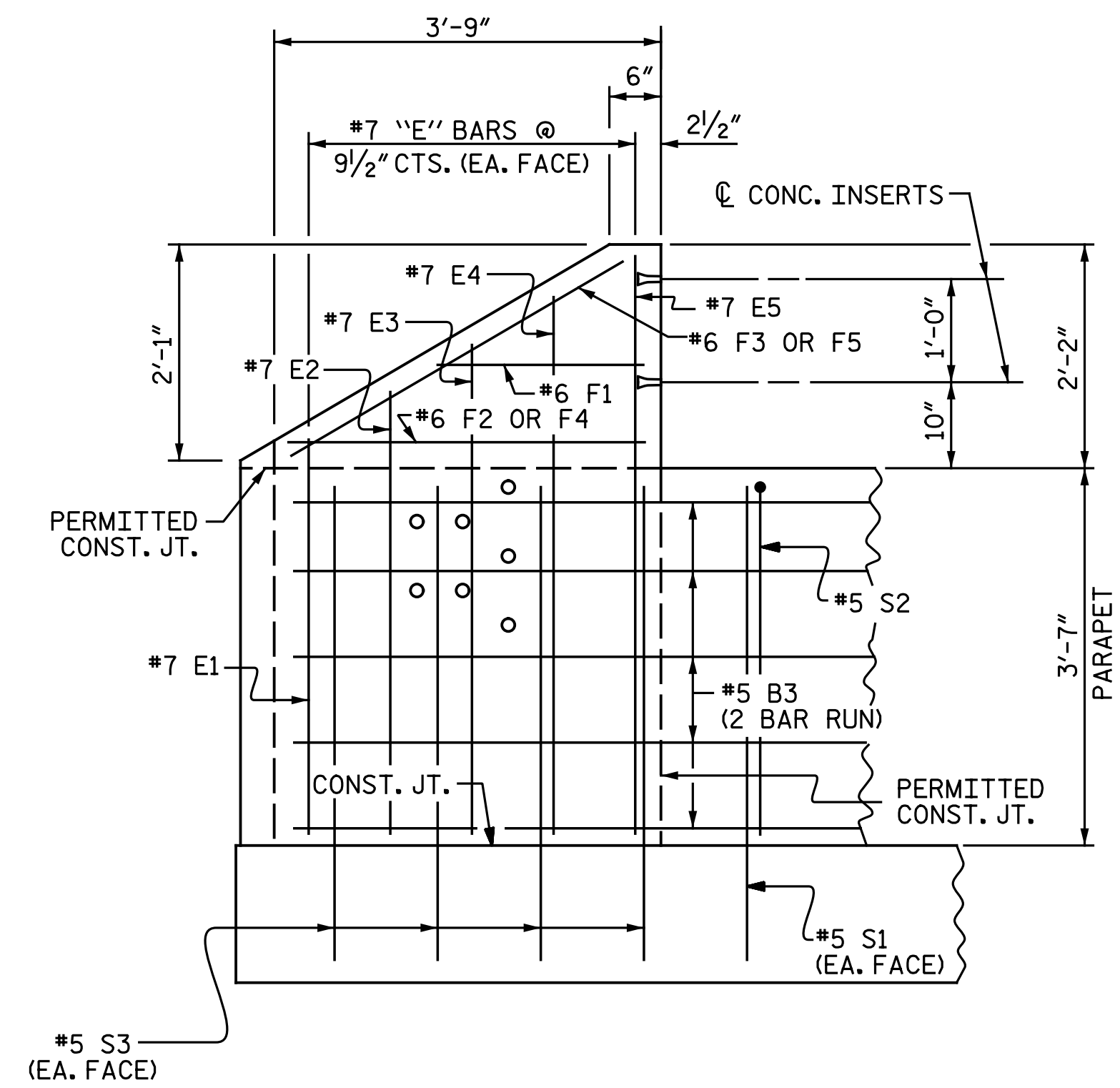
PLAN OF PARAPET



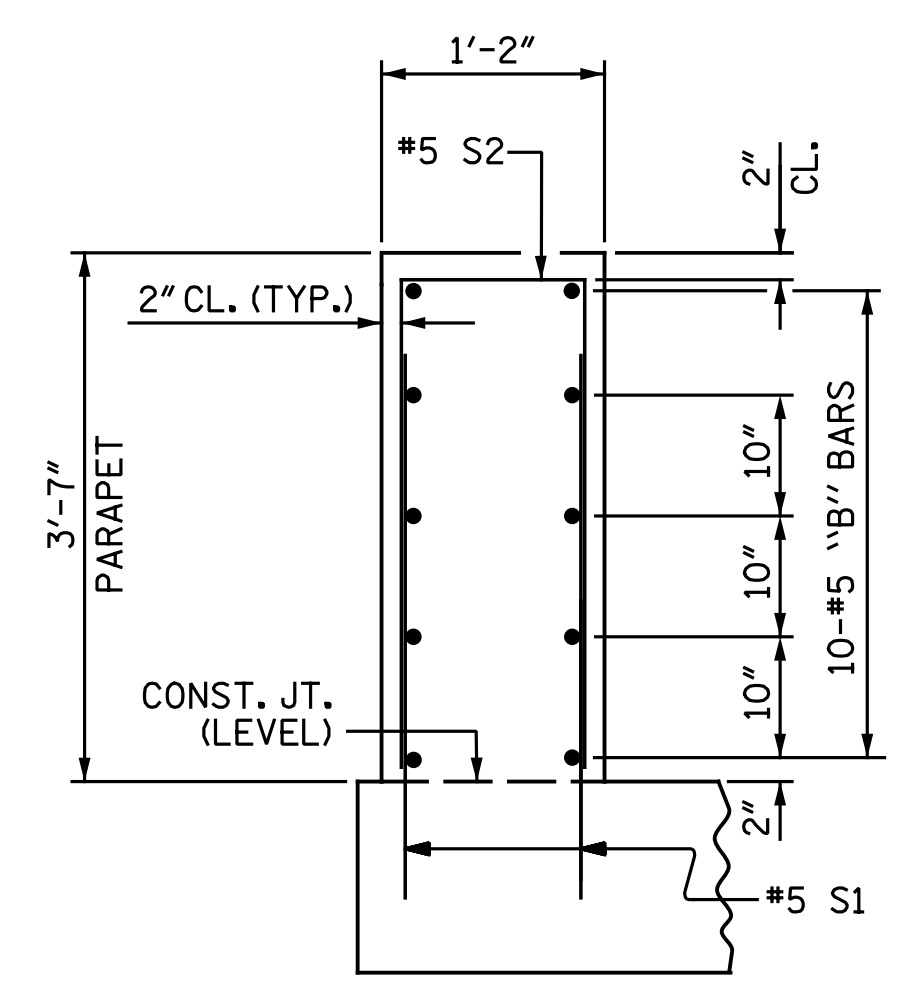
PLAN OF END POST



END VIEW



ELEVATION



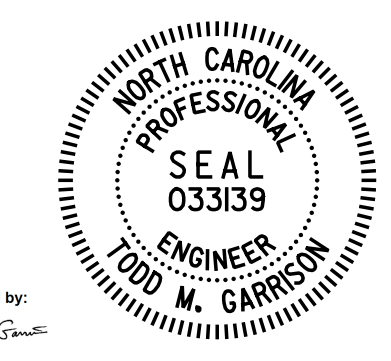
SECTION THRU PARAPET

REINFORCING STEEL IN DECK NOT SHOWN FOR CLARITY. SIDEWALK NOT SHOWN FOR CLARITY.

PARAPET AND END POST FOR TWO BAR RAIL

PROJECT NO. I-5986B
 JOHNSTON COUNTY
 STATION: 25+31.59 -Y18-

SHEET 2 OF 2



DocuSigned by:
 Todd M. Garrison
 61EAF7523943466
 4/27/2021

DOCUMENT NOT CONSIDERED FINAL UNLESS ALL SIGNATURES COMPLETED

STATE OF NORTH CAROLINA
 DEPARTMENT OF TRANSPORTATION
 RALEIGH
 CONCRETE PARAPET
 DETAILS

DRAWN BY: N. B. SPEAKS DATE: 4-29-20
 CHECKED BY: T. M. GARRISON DATE: 2-1-21

REVISIONS						SHEET NO.
NO.	BY:	DATE:	NO.	BY:	DATE:	S4-8
1			3			TOTAL SHEETS
2			4			14