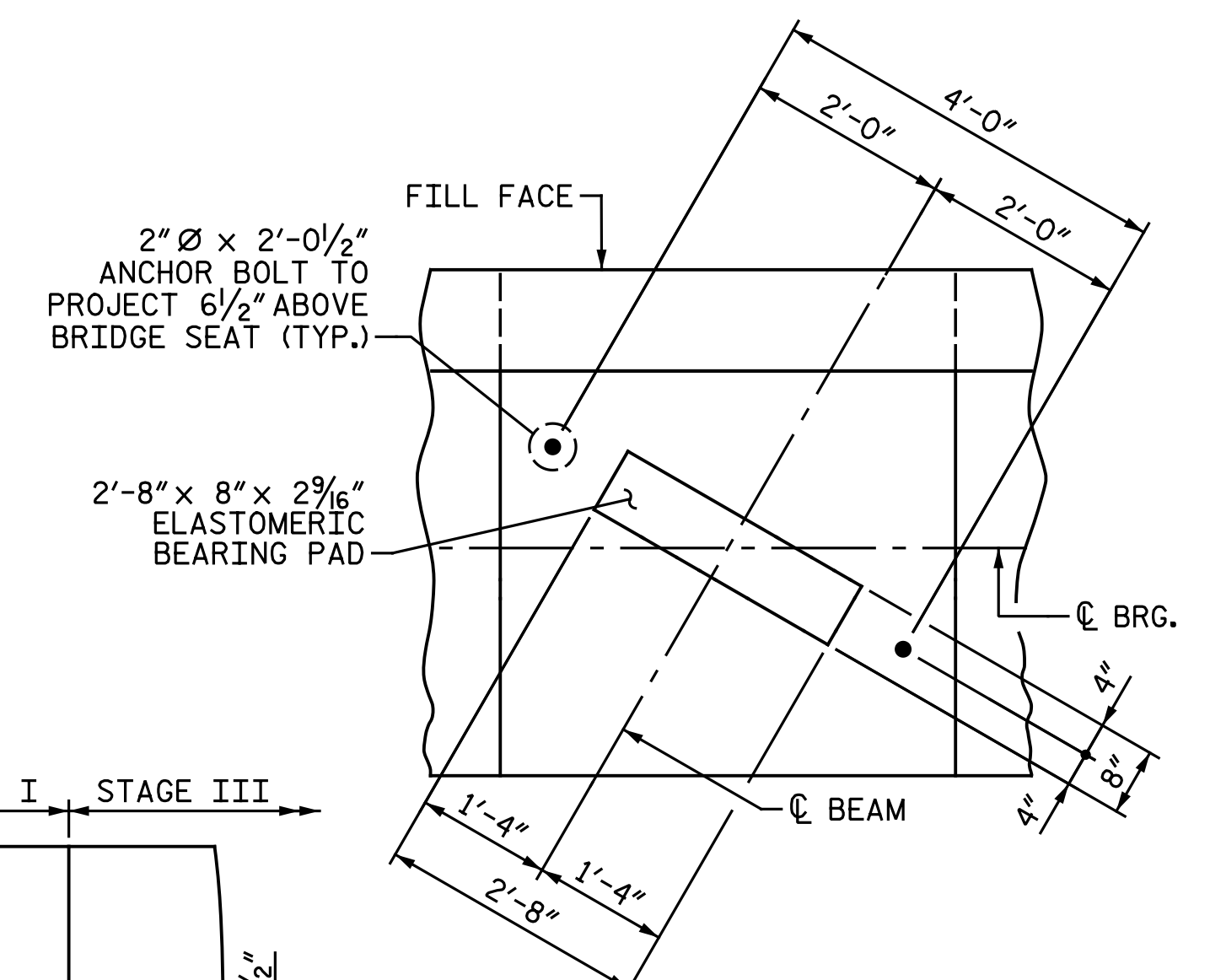
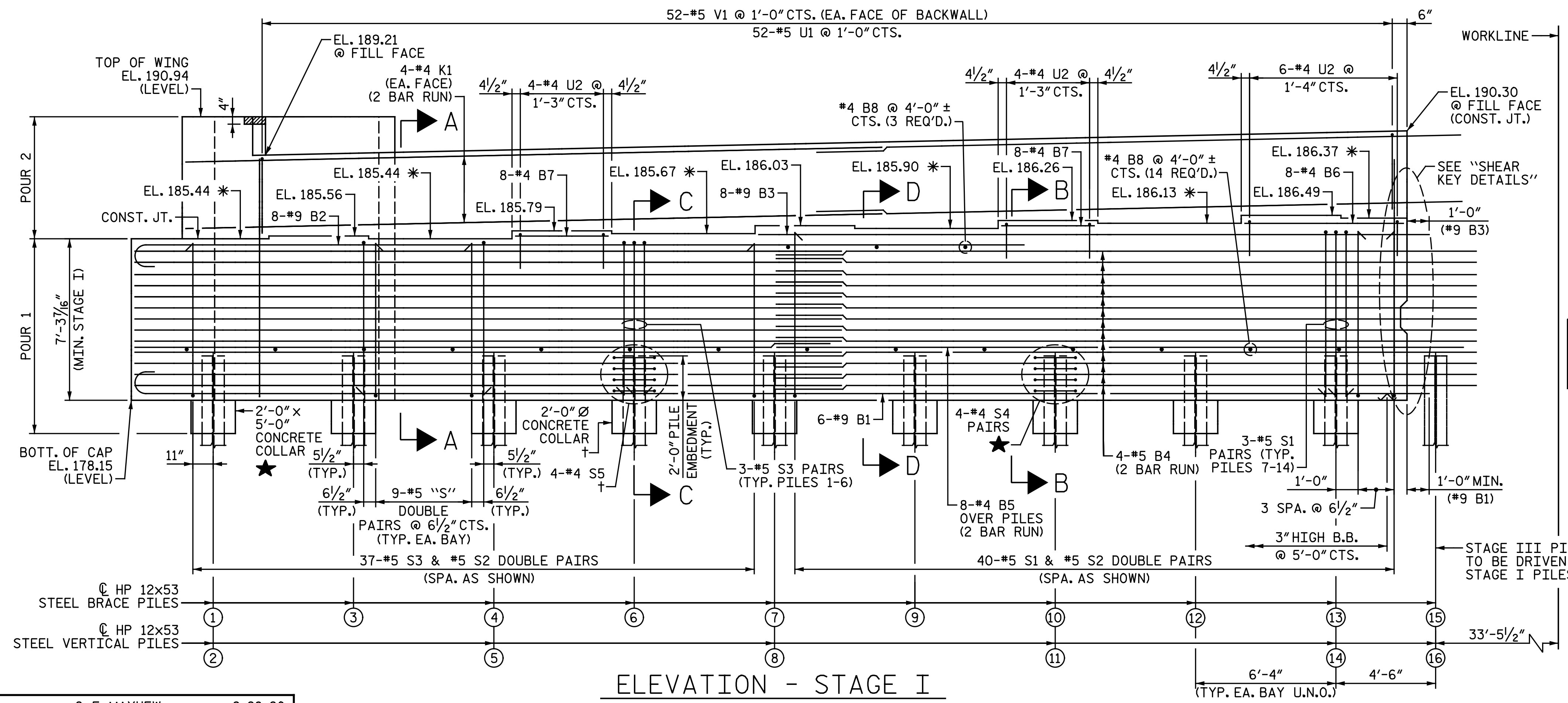


**PLAN - STAGE I**  
 FOR LOCATION OF BRACE PILE IN WING,  
 SEE "GENERAL DRAWING" SHEET 3 OF 4.

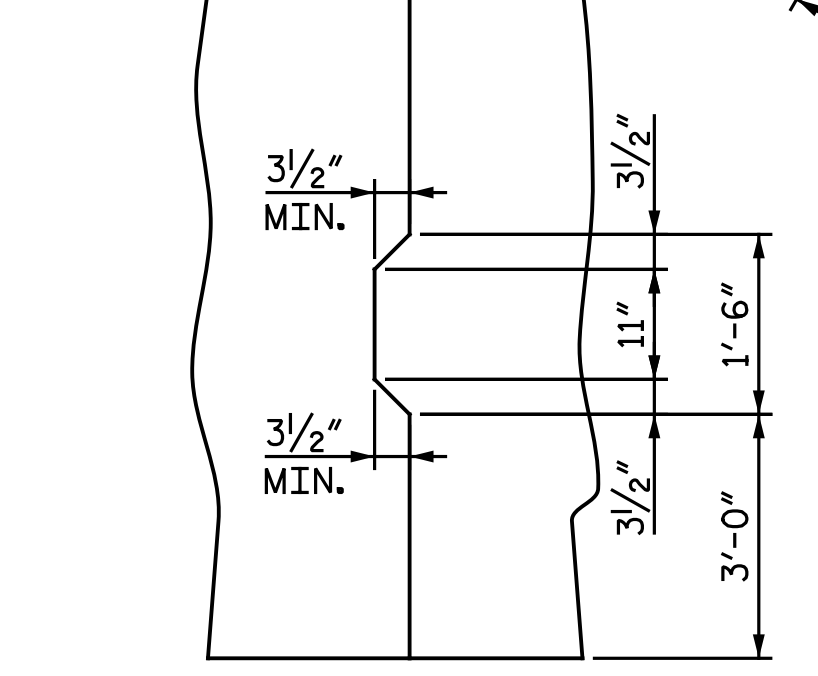
**NOTES:**  
 FOR "SECTION A-A", "PARTIAL SECTION B-B", "PARTIAL SECTION C-C", AND "PARTIAL SECTION D-D", SEE "END BENT 2 DETAILS" SHEET.  
 STIRRUPS & "U" BARS IN CAP MAY BE SHIFTED AS NECESSARY TO CLEAR ANCHOR BOLTS.  
 BACKWALL SHALL BE PLACED BEFORE APPLYING THE EPOXY PROTECTIVE COATING.  
 THE TOP SURFACE AREAS OF THE END BENT CAP SHALL BE CURED IN ACCORDANCE WITH THE STANDARD SPECIFICATIONS EXCEPT THE MEMBRANE CURING COMPOUND METHOD SHALL NOT BE USED.  
 THE TOP SURFACE OF THE CAP EXCEPT THE BRIDGE SEAT BUILD-UPS SHALL BE SLOPED TRANSVERSELY FROM THE FILL FACE TO THE BACK FACE AT A RATE OF 2%.  
 THE CONCRETE IN THE HATCHED AREA OF THE WING SHALL BE POURED AFTER THE BARRIER RAIL IS CAST IF SLIP FORMING IS USED.



**DETAIL "A"**  
 (TYP. EA. BRIDGE SEAT)



**ELEVATION - STAGE I**



**SHEAR KEY DETAILS**

SPLICE LENGTHS	
BAR SIZE	UNCOATED
#4	2'-5"
#5	3'-0"

- ★ TYP. PILES 1&2, 4&5, 7&8, 10&11, 13&14
- † TYP. PILES 3, 6, 9, 12



PROJECT NO. I-5986B  
JOHNSTON COUNTY  
 STATION: 1391+19.65 -L-  
 SHEET 1 OF 5

STATE OF NORTH CAROLINA  
 DEPARTMENT OF TRANSPORTATION  
 RALEIGH  
 SUBSTRUCTURE  
 END BENT 2  
 STAGE I

DOCUMENT NOT CONSIDERED FINAL  
 UNLESS ALL SIGNATURES COMPLETED

**Michael Baker International**  
 Michael Baker Engineering  
 8000 Regency Parkway, Suite 600  
 Cary, North Carolina 27518  
 NC License No.: F-1084

REVISIONS						SHEET NO. S3-35
NO.	BY:	DATE:	NO.	BY:	DATE:	
1			3			TOTAL SHEETS 44
2			4			

DRAWN BY: C. E. MAYHEW DATE: 2-28-20  
 CHECKED BY: J. M. GARRISON DATE: 3-4-20

\* FOR LOCATION OF ELEVATIONS BETWEEN BRIDGE SEAT BUILD-UPS, SEE "END BENT 2 DETAILS" SHEET.  
 U.N.O. DENOTES "UNLESS NOTED OTHERWISE"