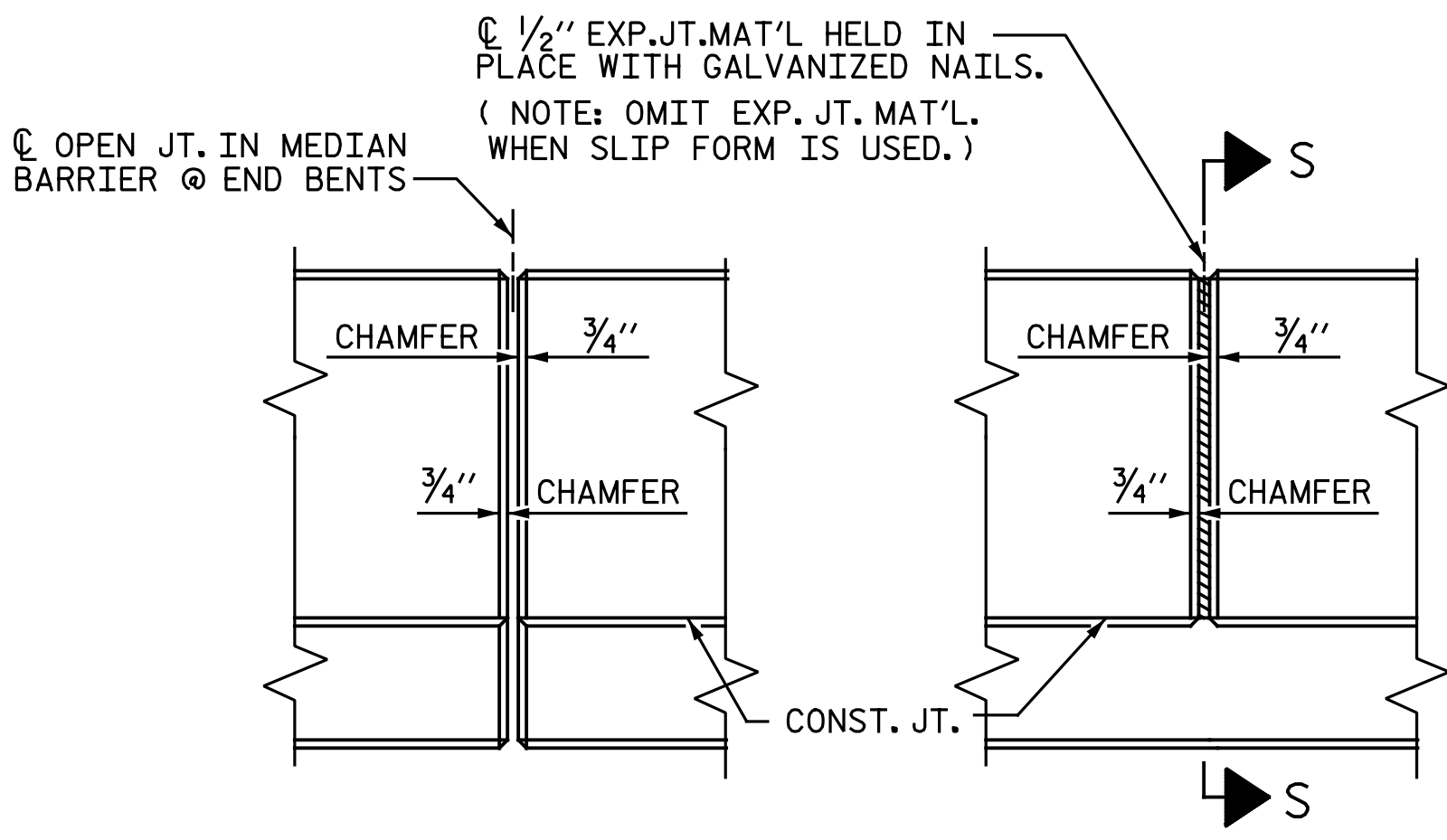


SECTION THRU MEDIAN BARRIER



ELEVATION AT EXPANSION JOINTS

MEDIAN BARRIER DETAILS

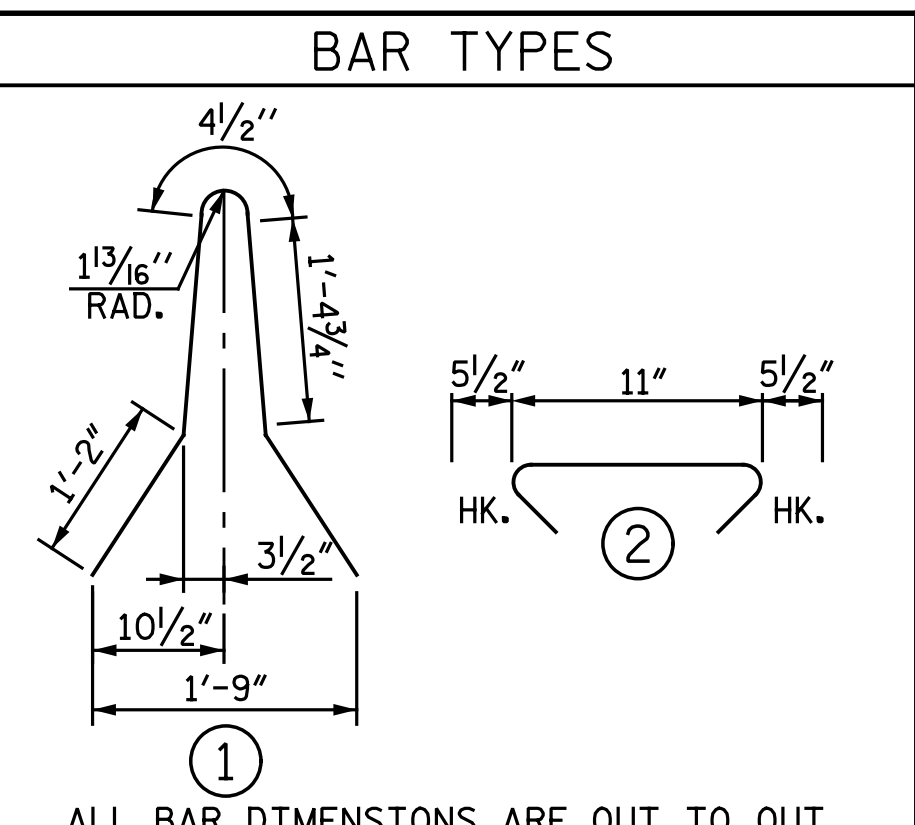
NOTES

THE CONCRETE MEDIAN BARRIER IN THE SPAN SHALL NOT BE CAST UNTIL ALL SLAB CONCRETE IN THE SPAN HAS BEEN CAST AND HAS REACHED A MINIMUM COMPRESSIVE STRENGTH OF 3,000 PSI.

ALL REINFORCING STEEL IN CONCRETE MEDIAN BARRIER SHALL BE EPOXY COATED.

GROOVED CONTRACTION JOINTS, 1/2" IN DEPTH, SHALL BE TOOLED IN ALL EXPOSED FACES OF THE CONCRETE MEDIAN BARRIER AND IN ACCORDANCE WITH ARTICLE 825-10(B) OF THE STANDARD SPECIFICATIONS. THE CONTRACTION JOINT SHALL BE LOCATED AT EACH THIRD POINT BETWEEN CONCRETE MEDIAN BARRIER EXPANSION JOINTS. ONLY ONE CONTRACTION JOINT IS REQUIRED AT MIDPOINT OF CONCRETE MEDIAN BARRIER SEGMENTS LESS THAN 20 FEET IN LENGTH AND NO CONTRACTION JOINTS ARE REQUIRED FOR THOSE SEGMENTS LESS THAN 10 FEET IN LENGTH.

THE CONTRACTOR MAY USE ADHESIVELY ANCHORED DOWELS IN PLACE OF THE #5 S2 BARS DETAILED. LEVEL 2 FIELD TESTING IS REQUIRED, AND THE YIELD LOAD OF THE DOWELS IS 19 KIPS. THE DOWELS ARE TO BE HOOKED ON ONE END WITH A PROJECTION MATCHING THAT OF THE #5 S2 BARS. THE OPPOSITE END IS TO BE STRAIGHT AND EMBEDDED 6" INTO THE DECK SLAB.



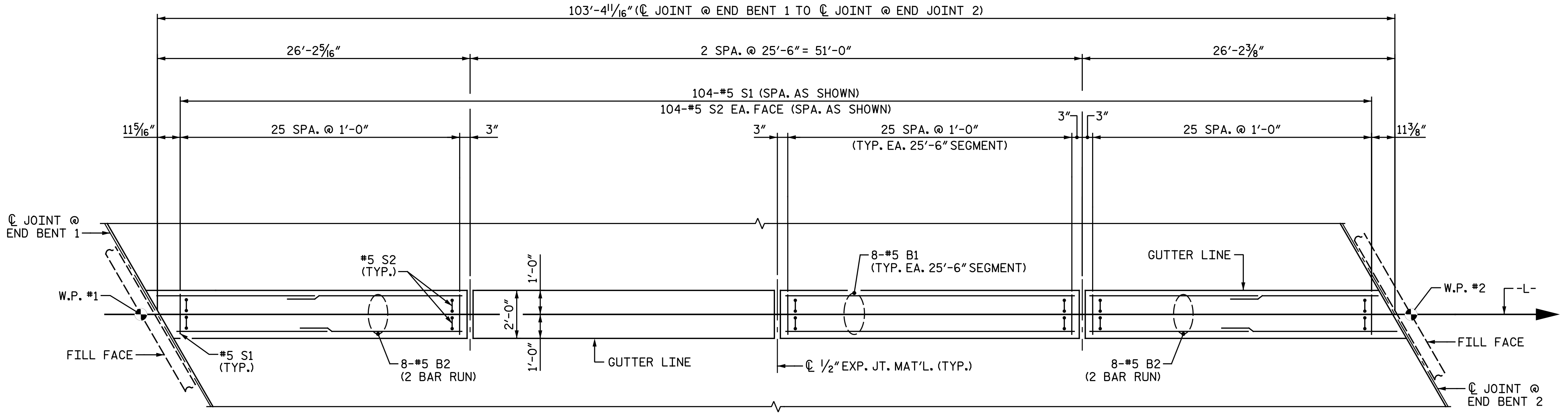
ALL BAR DIMENSIONS ARE OUT TO OUT

BILL OF MATERIAL FOR CONCRETE MEDIAN BARRIER ONLY

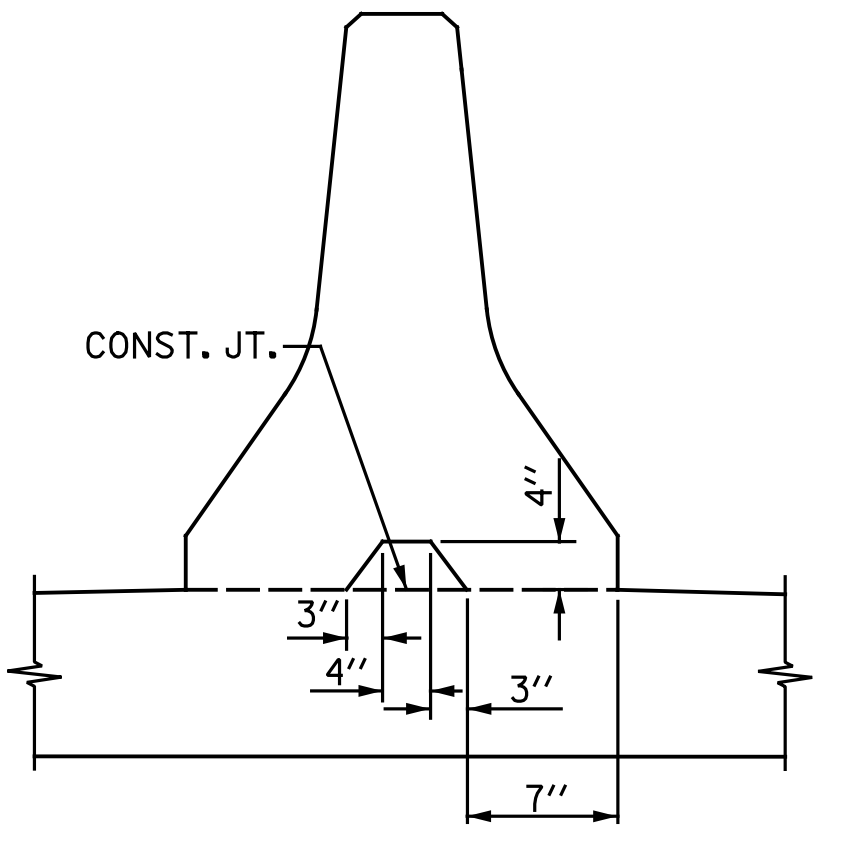
STAGE III					
BAR	NO.	SIZE	TYPE	LENGTH	WEIGHT
*B1	16	#5	STR.	25' - 1"	419
*B2	32	#5	STR.	14' - 11"	498
*S1	104	#5	1	5' - 6"	597
*S2	208	#5	2	1' - 10"	398

*EPOXY COATED REINFORCING STEEL	LBS.	1,912
CLASS AA CONCRETE	CU. YDS.	10.6
CONCRETE MEDIAN BARRIER LIN. FT.		103.39

QUANTITIES DO NOT INCLUDE CONCRETE MEDIAN BARRIERS ON THE APPROACH SLABS. FOR MEDIAN BARRIERS ON THE APPROACH SLABS, SEE "BRIDGE APPROACH SLAB DETAILS" SHEET.

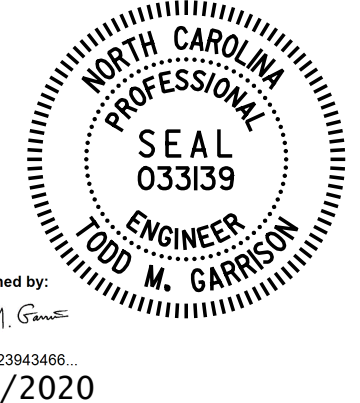


SPAN A PLAN OF CONCRETE MEDIAN BARRIER



SECTION S-S AT DAM IN OPEN JOINT (THIS IS TO BE USED ONLY WHEN SLIP FORM IS USED)

SPLICE LENGTH	
BAR SIZE	EPOXY COATED
#5	3'-5"



DOCUMENT NOT CONSIDERED FINAL UNLESS ALL SIGNATURES COMPLETED

**Michael Baker INTERNATIONAL**  
 Michael Baker Engineering  
 8000 Regency Parkway, Suite 600  
 Cary, North Carolina 27518  
 NC License No.: F-1084

PROJECT NO. I-5986B  
 JOHNSTON COUNTY  
 STATION: 1391+19.65 -L-

STATE OF NORTH CAROLINA  
 DEPARTMENT OF TRANSPORTATION  
 RALEIGH  
 SUPERSTRUCTURE  
 CONCRETE MEDIAN BARRIER

REVISIONS						SHEET NO.
NO.	BY:	DATE:	NO.	BY:	DATE:	
1			3			TOTAL SHEETS
2			4			44

DRAWN BY: N. B. SPEAKS DATE: 8-5-19  
 CHECKED BY: J. M. GARRISON DATE: 3-11-20