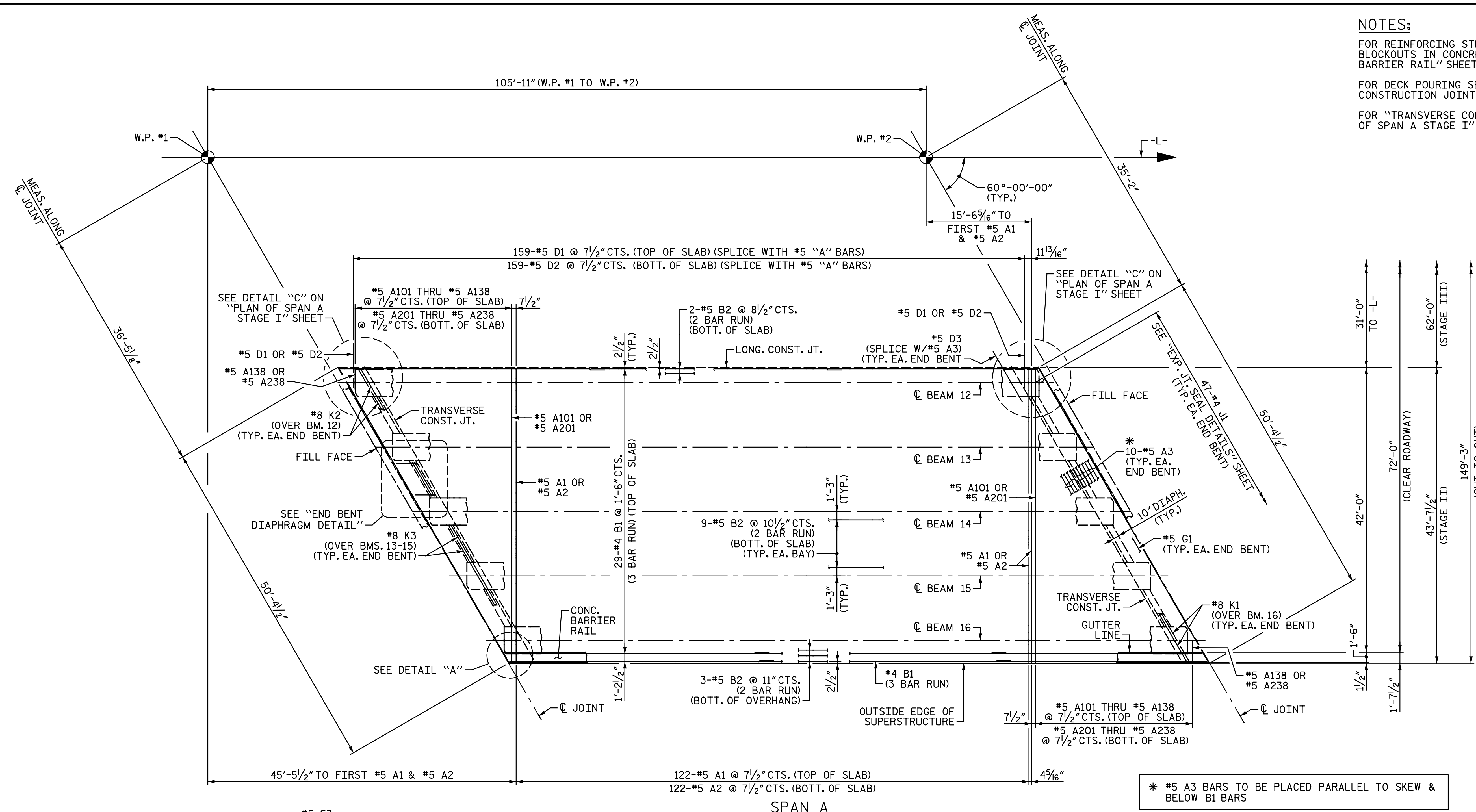


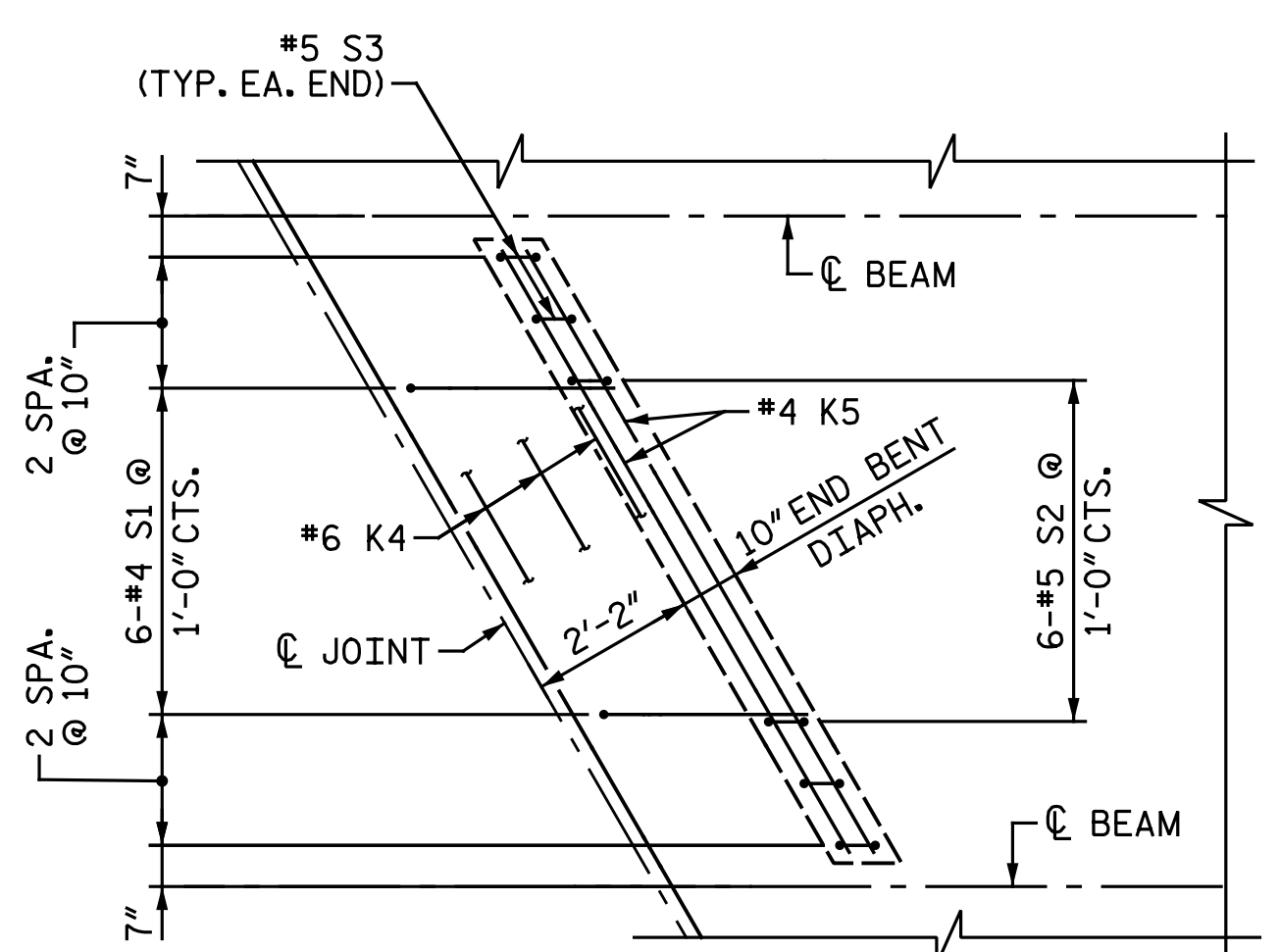
**NOTES:**  
 FOR REINFORCING STEEL AND LOCATION OF TEMPORARY DRAIN BLOCKOUTS IN CONCRETE BARRIER RAIL, SEE "CONCRETE BARRIER RAIL" SHEET.  
 FOR DECK POURING SEQUENCE AND LOCATION OF TRANSVERSE CONSTRUCTION JOINTS, SEE "BILL OF MATERIAL" SHEETS.  
 FOR "TRANSVERSE CONSTRUCTION JOINT DETAIL", SEE "PLAN OF SPAN A STAGE I" SHEET.



SPAN A  
 PLAN OF SPAN

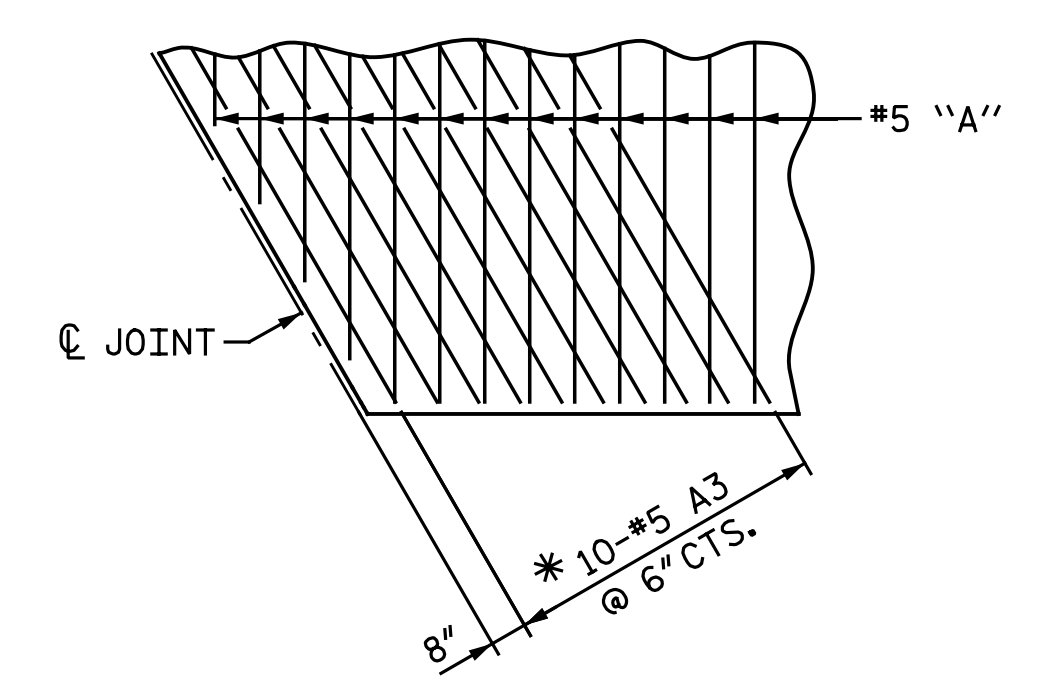
SPLICE LENGTHS		
BAR SIZE	EPOXY COATED	UNCOATED
#4	2'-0"	1'-9"
#5	2'-6"	2'-2"

\* #5 A3 BARS TO BE PLACED PARALLEL TO SKEW & BELOW B1 BARS



END BENT DIAPHRAGM DETAIL

END BENT 1 SHOWN, END BENT 2 SIMILAR.  
 #8 "K" BARS OVER BEAMS NOT SHOWN FOR CLARITY. (TYP. EA. BAY)



DETAIL "A"

END BENT 1 SHOWN, END BENT 2 SIMILAR.  
 ADDITIONAL REINFORCEMENT NOT SHOWN FOR CLARITY.



DocuSigned by:  
 Todd M. Garrison  
 01EAF7523943466  
 4/30/2020

DOCUMENT NOT CONSIDERED FINAL  
 UNLESS ALL SIGNATURES COMPLETED

**Michael Baker International**  
 Michael Baker Engineering  
 8000 Regency Parkway, Suite 600  
 Cary, North Carolina 27518  
 NC License No.: F-1084

PROJECT NO. I-5986B  
 JOHNSTON COUNTY  
 STATION: 1391+19.65 -L-  
 SHEET 2 OF 3

STATE OF NORTH CAROLINA  
 DEPARTMENT OF TRANSPORTATION  
 RALEIGH  
 SUPERSTRUCTURE  
 PLAN OF SPAN A  
 STAGE II

REVISIONS						SHEET NO.
NO.	BY:	DATE:	NO.	BY:	DATE:	S3-I3
1			3			TOTAL SHEETS
2			4			44

DRAWN BY: C. E. MAYHEW DATE: 11-20-19  
 CHECKED BY: J. M. GARRISON DATE: 4-20-20