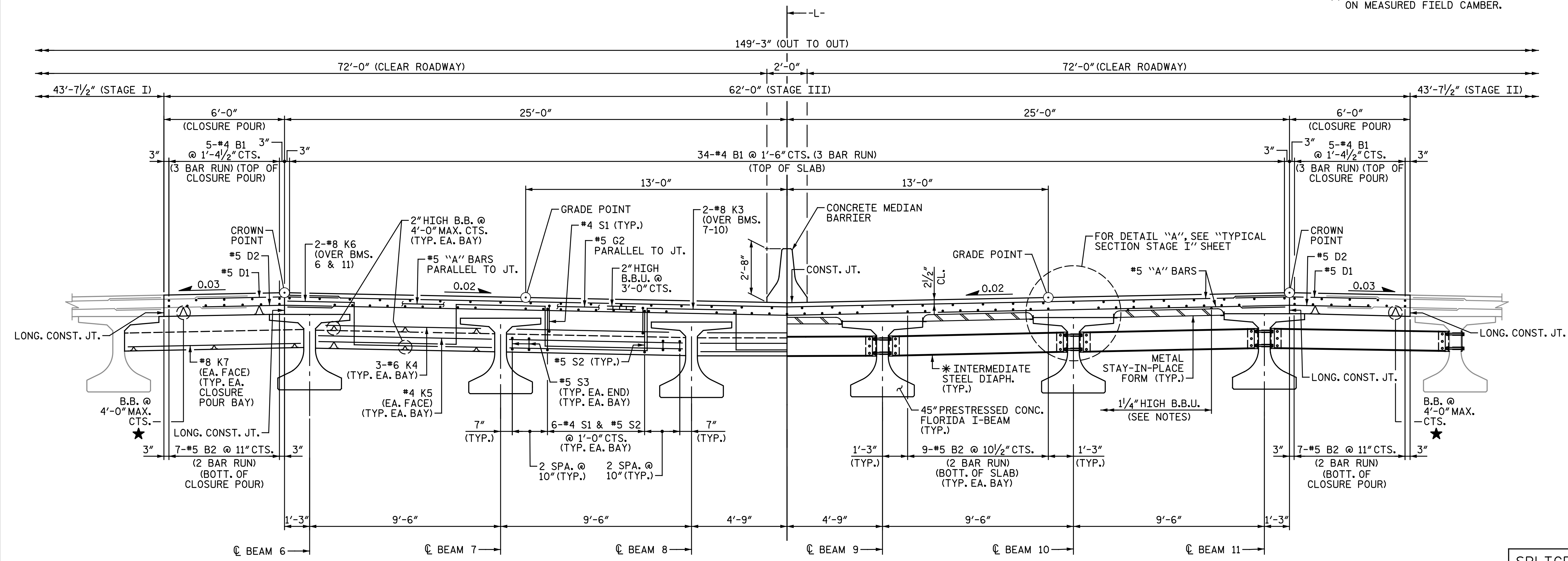


NOTES:
 FOR "PLAN AT END BENT DIAPHRAGM", SEE "TYPICAL SECTION STAGE I" SHEET.
 FOR "SECTION THRU END BENT DIAPHRAGM", SEE "TYPICAL SECTION STAGE I" SHEET.
 FOR ADDITIONAL NOTES, SEE "TYPICAL SECTION STAGE I" SHEET.
 * FOR DETAILS OF INTERMEDIATE DIAPHRAGMS, SEE "INTERMEDIATE STEEL DIAPHRAGMS FOR 45" FLORIDA I-BEAMS" SHEET.
 ★ B.B. HEIGHTS IN CLOSURE POUR BAYS TO BE DETERMINED BASED ON MEASURED FIELD CAMBER.



AT END BENT DIAPHRAGM

AT INTERMEDIATE DIAPHRAGM

TYPICAL SECTION - STAGE III
 (DIAPHRAGM REINFORCEMENT DENOTED AS TYP. EA. BAY ALSO TYP. EA. CLOSURE POUR BAY)

SPLICE LENGTHS		
BAR SIZE	EPOXY COATED	UNCOATED
#5	2'-6"	2'-2"

PROJECT NO. I-5986B
JOHNSTON COUNTY
 STATION: 1391+19.65 -L-
 SHEET 3 OF 3



DocuSigned by:
 Todd M. Garrison
 01EAF7523943466
 4/30/2020

DOCUMENT NOT CONSIDERED FINAL
 UNLESS ALL SIGNATURES COMPLETED

Michael Baker International
 Michael Baker Engineering
 8000 Regency Parkway, Suite 600
 Cary, North Carolina 27518
 NC License No.: F-1084

STATE OF NORTH CAROLINA
 DEPARTMENT OF TRANSPORTATION
 RALEIGH
 SUPERSTRUCTURE
 TYPICAL SECTION
 STAGE III

REVISIONS						SHEET NO. S3-II
NO.	BY:	DATE:	NO.	BY:	DATE:	
1			3			TOTAL SHEETS 44
2			4			

DRAWN BY: C. E. MAYHEW DATE: 8-22-19
 CHECKED BY: J. M. GARRISON DATE: 4-18-20