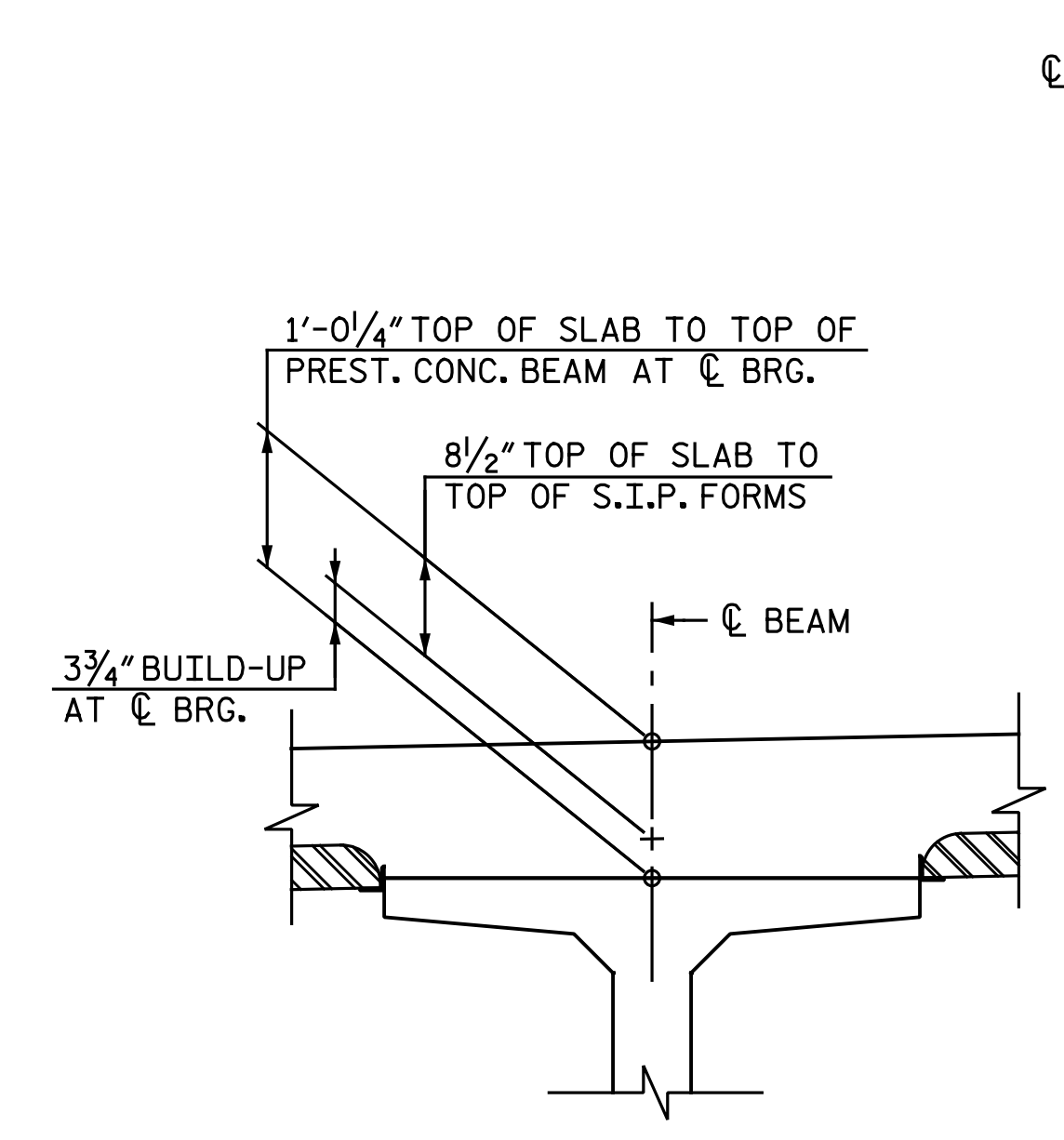


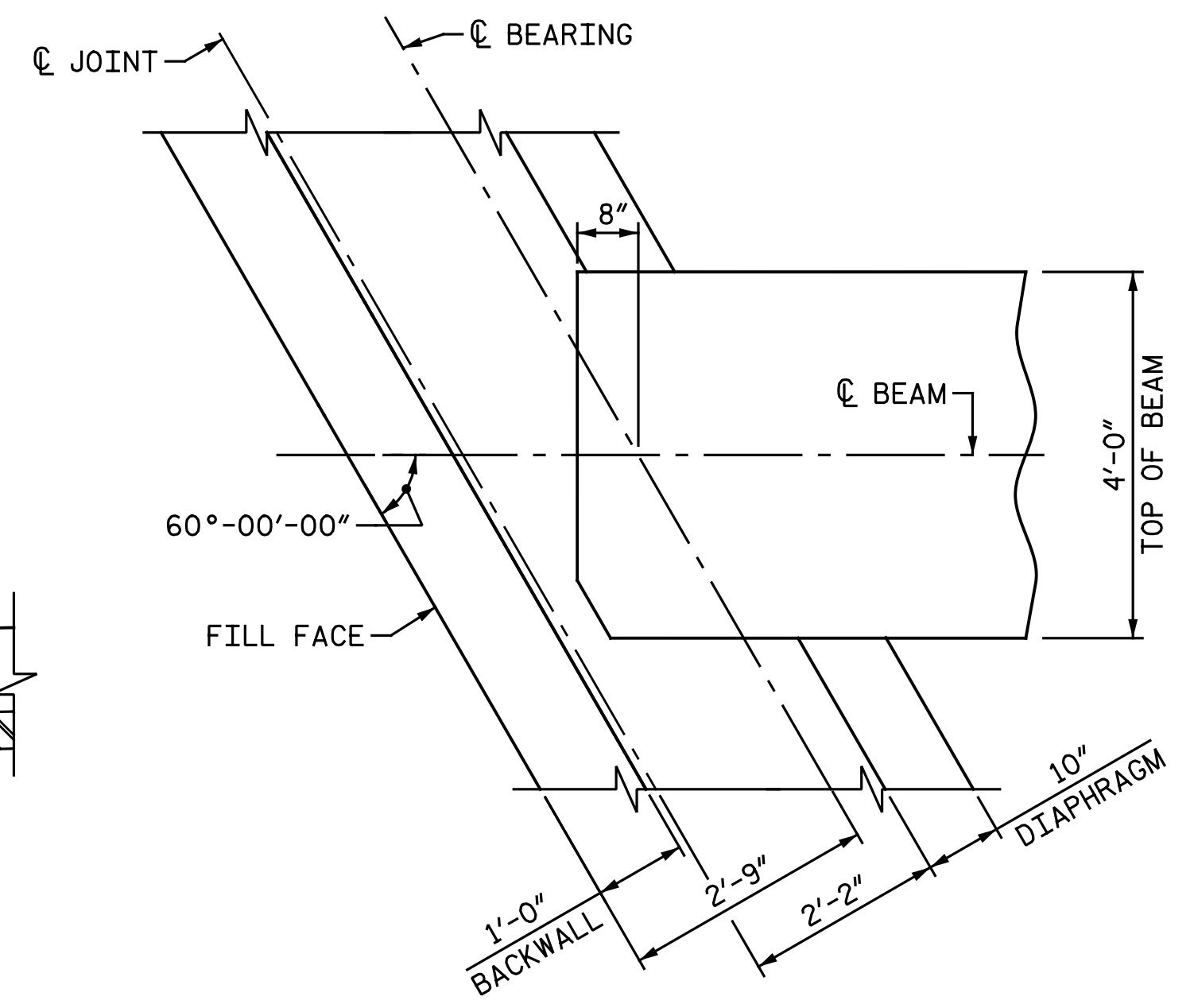
AT END BENT DIAPHRAGM AT INTERMEDIATE DIAPHRAGM

TYPICAL SECTION - STAGE I

(DOWELS SHALL BE SPLICED TO TOP AND BOTTOM SLAB REINFORCING STEEL)

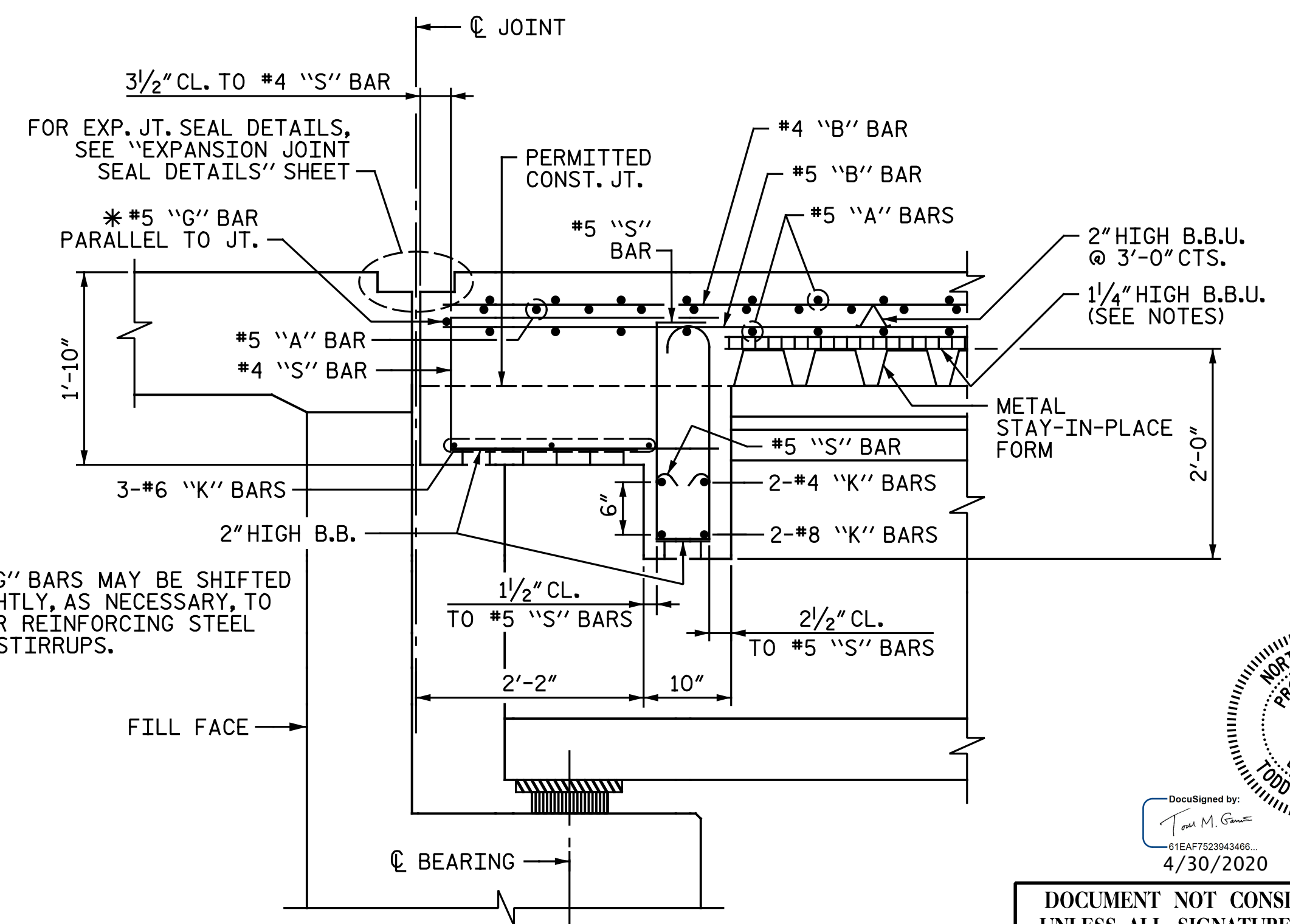


DETAIL "A"



PLAN AT END BENT DIAPHRAGM

END BENT 1 SHOWN, END BENT 2 SIMILAR



SECTION THRU END BENT DIAPHRAGM

END BENT 1 SHOWN, END BENT 2 SIMILAR

NOTES:

PROVIDE 1/4" HIGH BEAM BOLSTERS UPPER AT 4'-0" CTS. ATOP THE METAL STAY-IN-PLACE FORMS TO SUPPORT THE BOTTOM MAT OF "A" BARS. WHEN USING REMOVABLE FORMS, PROVIDE CONTINUOUS HIGH CHAIRS FOR METAL DECK (C.H.C.M.) @ 4'-0" CTS. WITH A HEIGHT TO SUPPORT THE BOTTOM MAT OF "A" BARS A CLEAR DISTANCE OF 2 1/2" ABOVE THE TOP OF THE REMOVABLE FORM.

LONGITUDINAL STEEL MAY BE SHIFTED SLIGHTLY, AS NECESSARY, TO AVOID INTERFERENCE WITH STIRRUPS IN PRESTRESSED CONCRETE BEAMS AND TO FACILITATE INSTALLATION OF CONCRETE BARRIER RAIL AND CONCRETE MEDIAN BARRIER REINFORCEMENT.

FOR CONCRETE BARRIER RAIL DETAILS, INCLUDING TEMPORARY DRAIN BLOCKOUTS, SEE "CONCRETE BARRIER RAIL" SHEET.

FOR CONCRETE MEDIAN BARRIER DETAILS, SEE "CONCRETE MEDIAN BARRIER" SHEET.

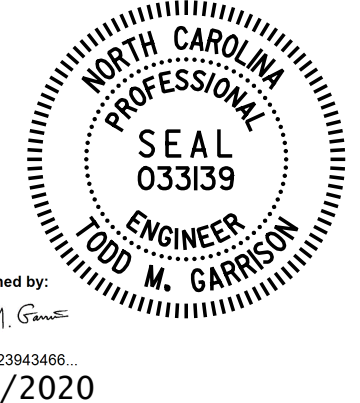
PREVIOUSLY CAST CONCRETE IN A SPAN SHALL HAVE ATTAINED A MINIMUM COMPRESSIVE STRENGTH OF 3,000 PSI BEFORE ADDITIONAL CONCRETE IS CAST IN THE SPAN.

SEE TRAFFIC CONTROL PLANS FOR LOCATIONS AND PAY LIMITS OF THE ANCHORED PORTABLE CONCRETE BARRIERS.

* FOR DETAILS OF INTERMEDIATE DIAPHRAGMS, SEE "INTERMEDIATE STEEL DIAPHRAGMS FOR 45" FLORIDA I-BEAMS" SHEET.

PROJECT NO. I-5986B
JOHNSTON COUNTY
 STATION: 1391+19.65 -L-

SHEET 1 OF 3



STATE OF NORTH CAROLINA
 DEPARTMENT OF TRANSPORTATION
 RALEIGH
 SUPERSTRUCTURE
 TYPICAL SECTION
 STAGE I

DOCUMENT NOT CONSIDERED FINAL
 UNLESS ALL SIGNATURES COMPLETED

NO.	BY:	DATE:	REVISIONS			SHEET NO.
			NO.	BY:	DATE:	
1			3			S3-9 TOTAL SHEETS 44
2			4			

DRAWN BY: C. E. MAYHEW DATE: 8-22-19
 CHECKED BY: J. M. GARRISON DATE: 4-17-20

Michael Baker International
 Michael Baker Engineering
 8000 Regency Parkway, Suite 600
 Cary, North Carolina 27518
 NC License No.: F-1084