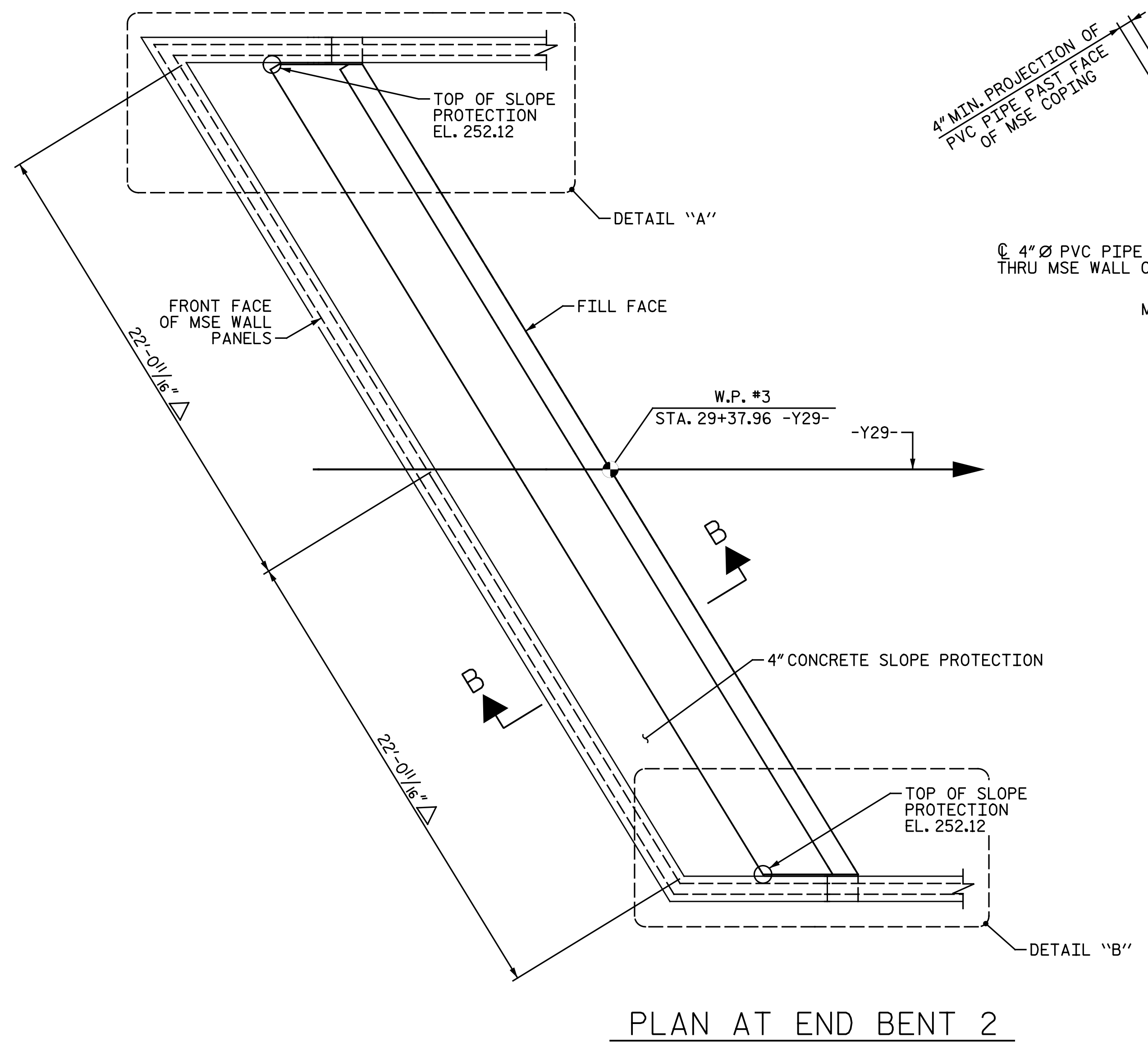
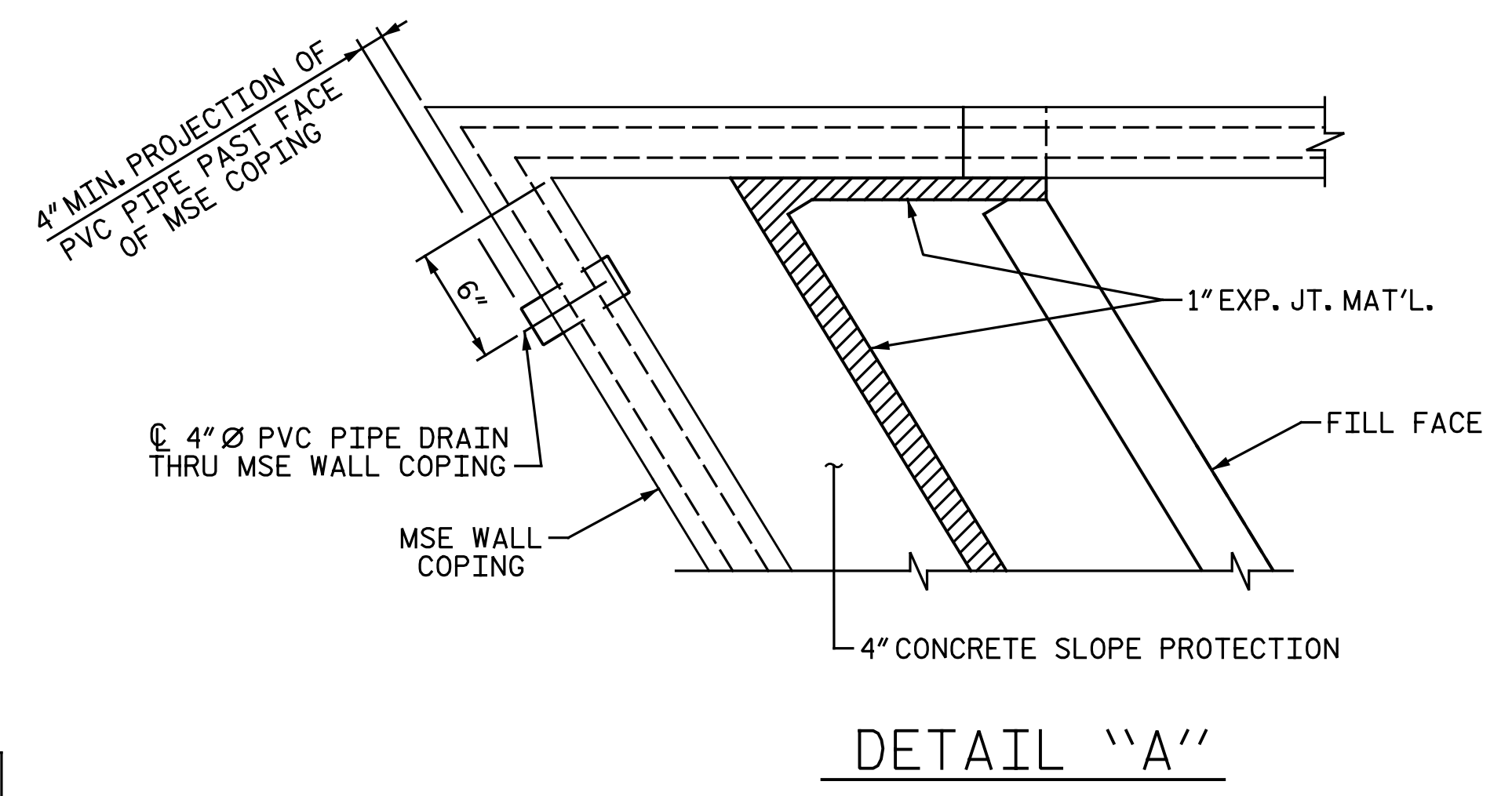


**NOTE:**  
SEE NOTES ON "SLOPE PROTECTION DETAILS" SHEET 1 OF 2.

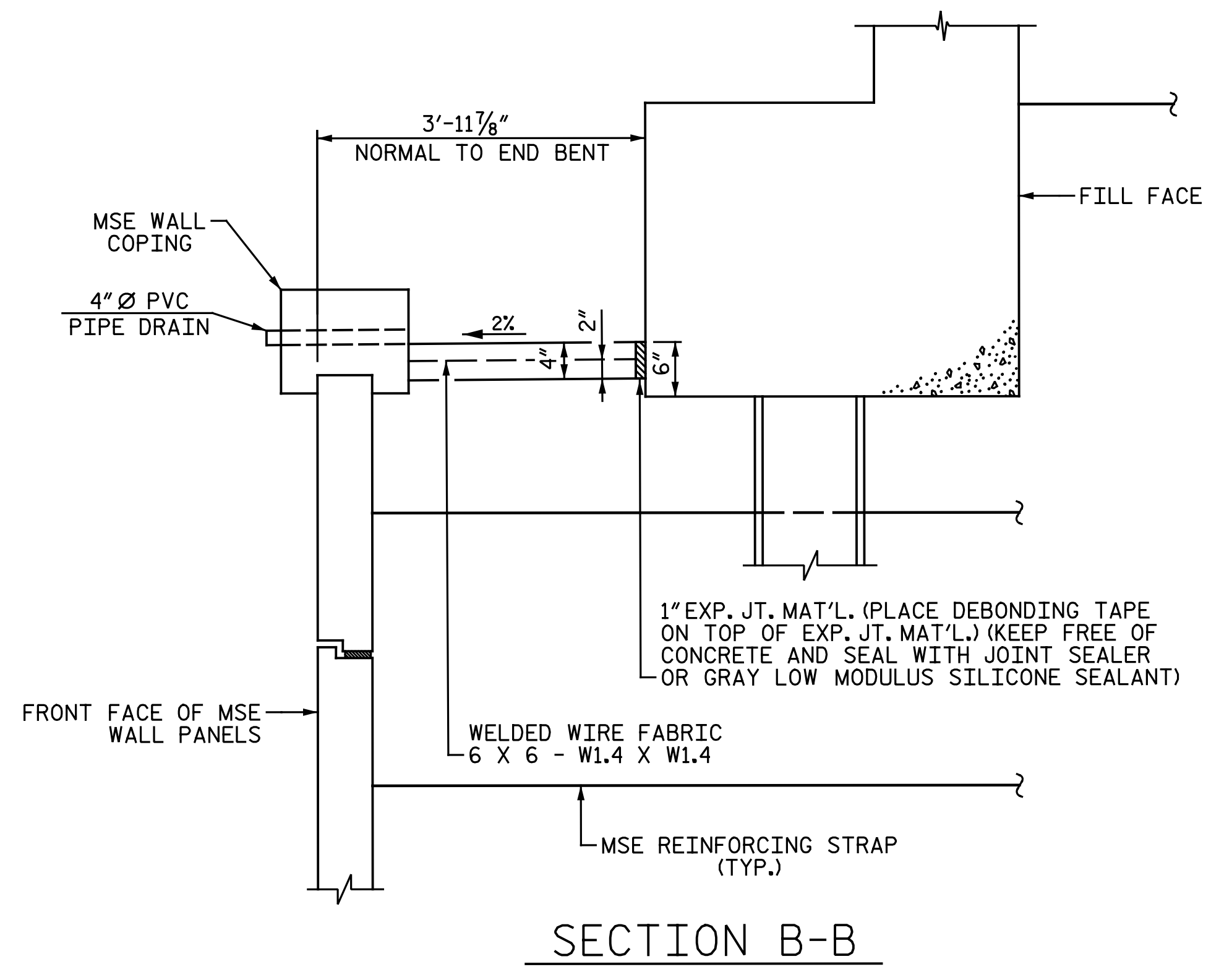


**PLAN AT END BENT 2**

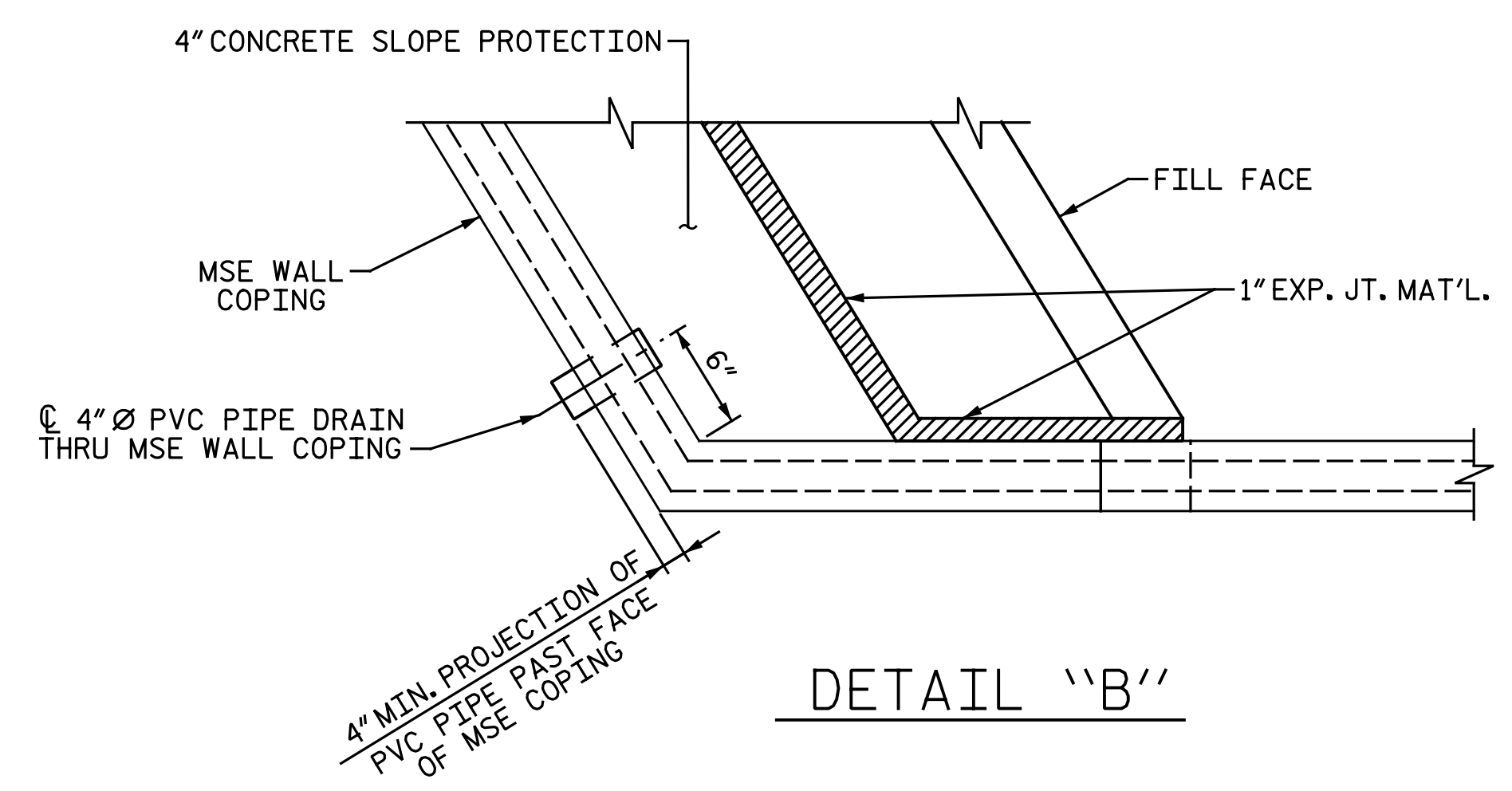
△ DIMENSION TO BE ADJUSTED AS REQUIRED IN FIELD TO MATCH MSE WALL.



**DETAIL "A"**



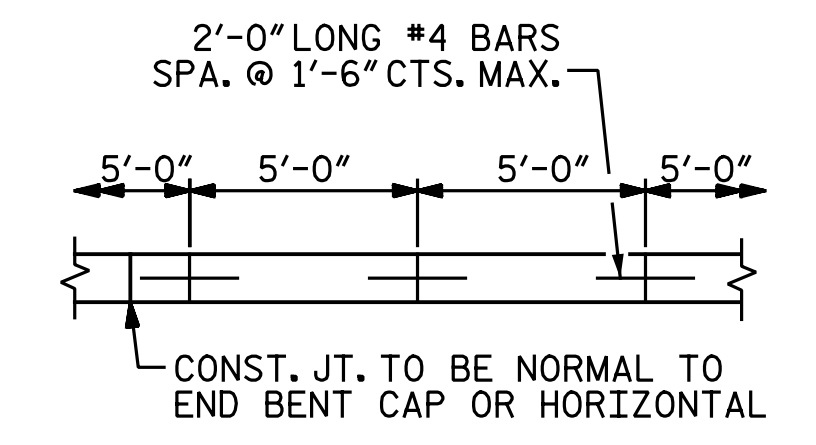
**SECTION B-B**



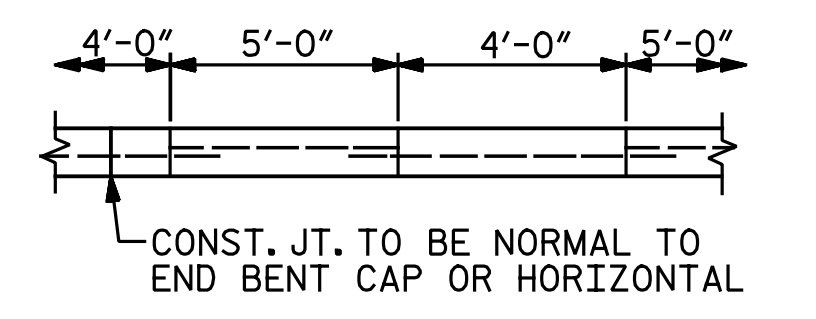
**DETAIL "B"**

BRIDGE @ STA. 28+39.21 -Y29-	4 INCH SLOPE PROTECTION	* WELDED WIRE FABRIC 60 INCHES WIDE
	SQUARE YARDS	APPROX. L.F.
END BENT 2	15	27

\* QUANTITY SHOWN IS BASED ON 5' POURS.



**POURING DETAIL**

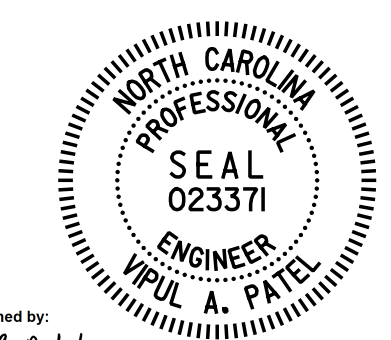


**OPTIONAL POURING DETAIL**

POUR A 4'-0" STRIP FIRST.

PROJECT NO. I-5986B  
JOHNSTON COUNTY  
STATION: 28+39.21 -Y29-

SHEET 2 OF 2



DocuSigned by:  
*Vipul A Patel*  
4/13/2020

DOCUMENT NOT CONSIDERED FINAL  
UNLESS ALL SIGNATURES COMPLETED

REVISIONS						SHEET NO.
NO.	BY:	DATE:	NO.	BY:	DATE:	S2-26
1			3			TOTAL SHEETS
2			4			28

DRAWN BY : N. B. SPEAKS DATE : 8-2-19  
CHECKED BY : V. A. PATEL DATE : 1-27-20

**Michael Baker INTERNATIONAL**  
Michael Baker Engineering  
8000 Regency Parkway, Suite 600  
Cary, North Carolina 27518  
NC License No.: F-1084