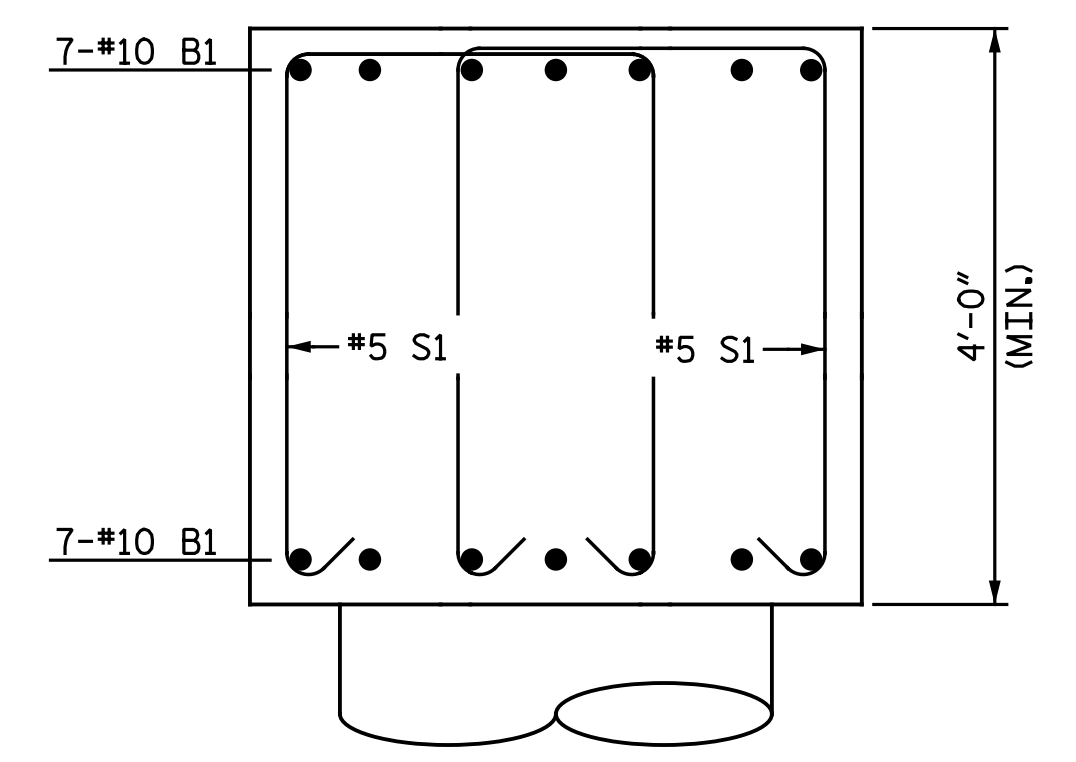
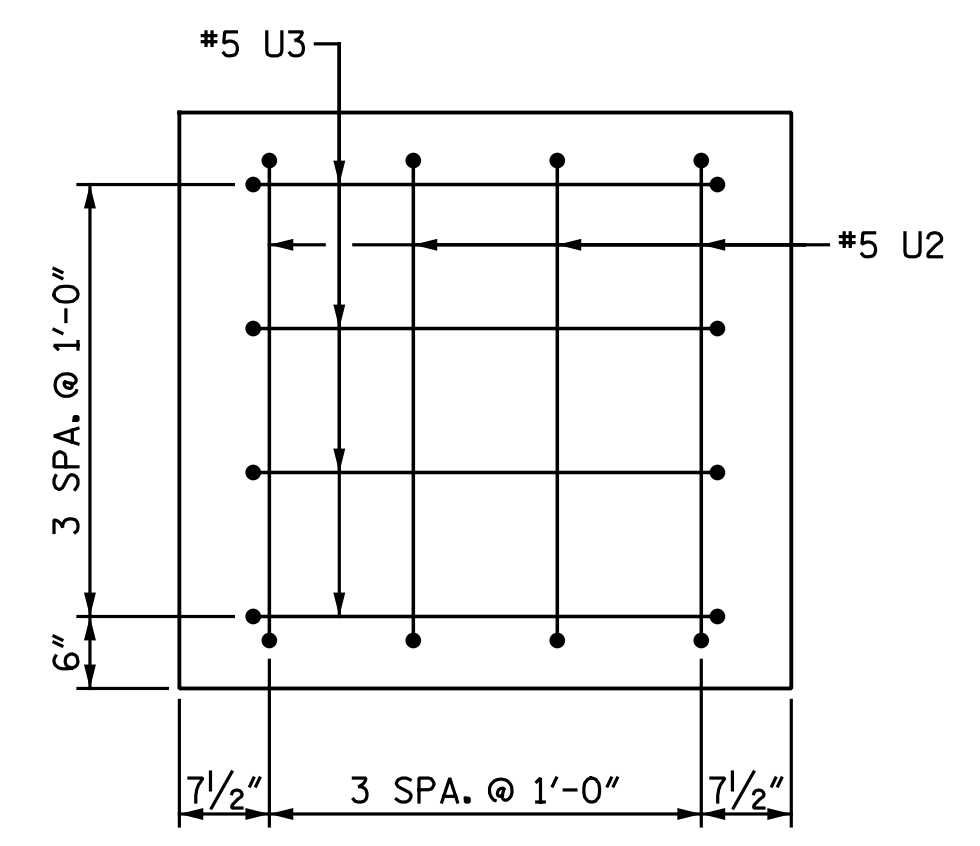


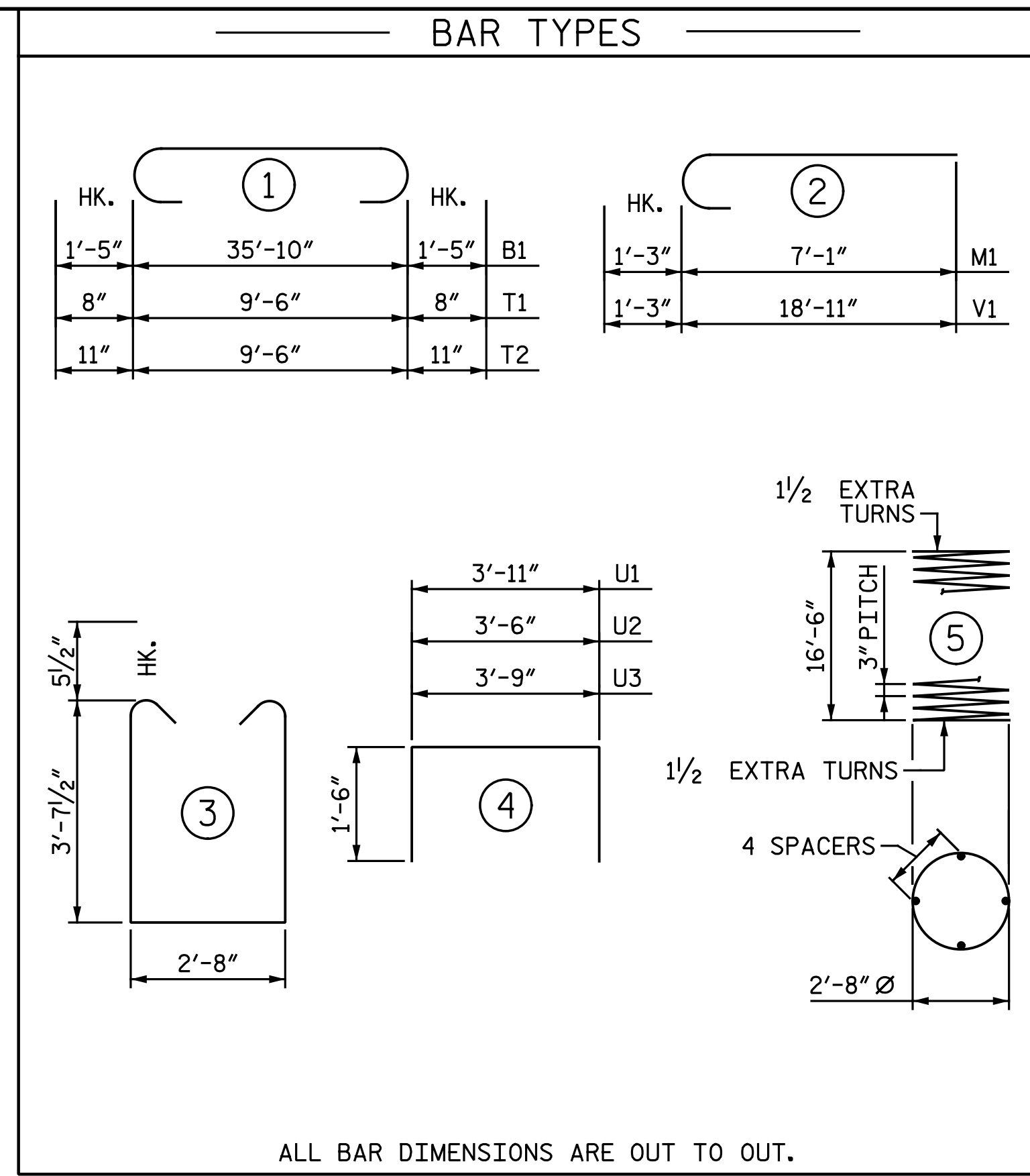
**SECTION A-A**  
\* INVERT ALTERNATE STIRRUPS



**SECTION B-B**  
ONLY #9 B1 & #5 S1 SHOWN FOR CLARITY.  
(TYP. EA. COLUMN)

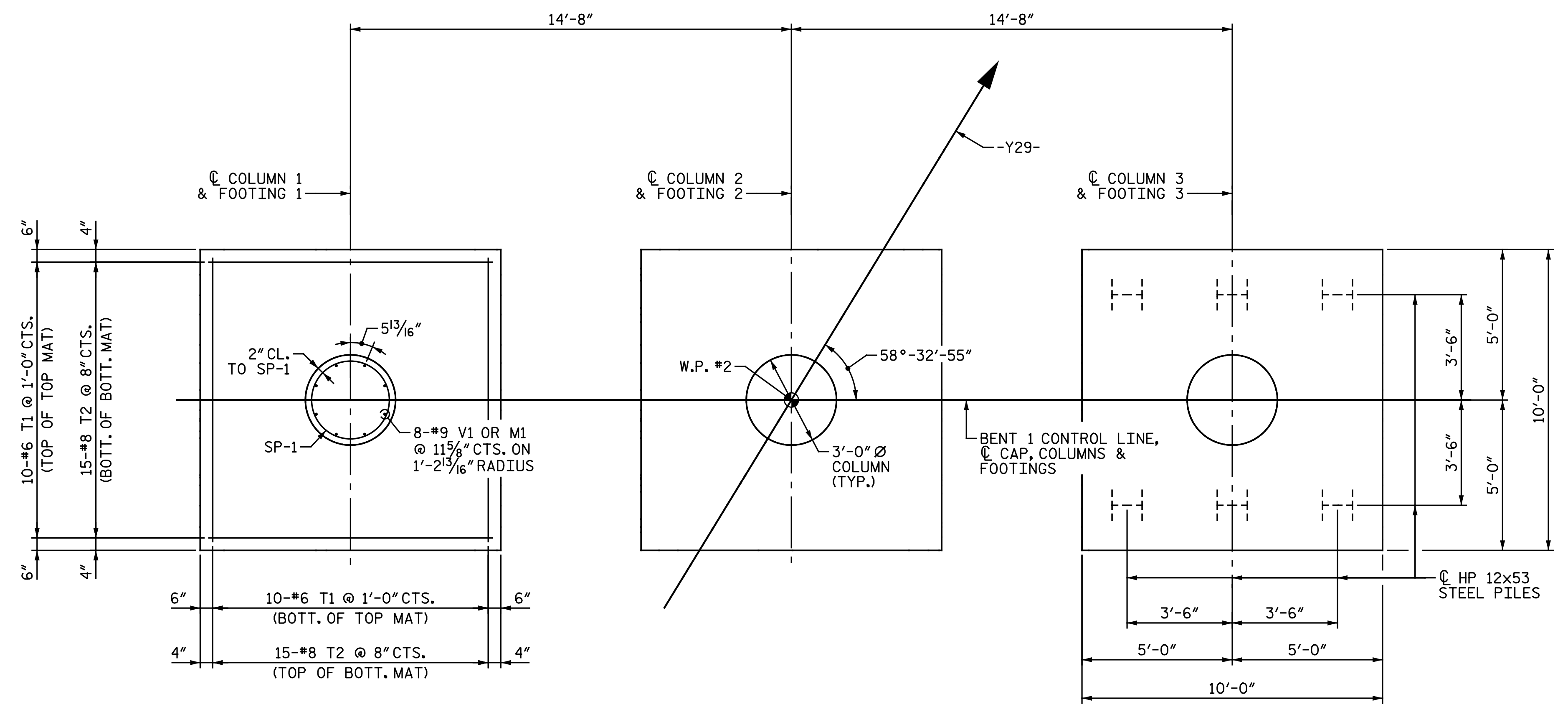


**END VIEW**  
(TYP. EA. END)



ALL BAR DIMENSIONS ARE OUT TO OUT.  
\* THE SP-1 SPIRAL REINFORCING STEEL SHALL BE W20 OR D20 COLD DRAWN WIRE OR #4 PLAIN OR DEFORMED BAR.

BILL OF MATERIAL					
BENT 1					
BAR	NO.	SIZE	TYPE	LENGTH	WEIGHT
B1	14	#10	1	38' - 8"	2,329
B2	20	#5	STR.	36' - 0"	751
B3	14	#4	STR.	4' - 2"	39
M1	24	#9	2	8' - 4"	680
S1	122	#5	3	10' - 10"	1,378
T1	60	#6	1	10' - 10"	976
T2	90	#8	1	11' - 4"	2,723
U1	36	#4	4	6' - 11"	166
U2	8	#5	4	6' - 6"	54
U3	8	#5	4	6' - 9"	56
V1	24	#9	2	20' - 2"	1,646
REINFORCING STEEL				LBS.	10,798
SP-1				LBS.	1,141
SPIRAL COLUMN REINFORCING STEEL				LBS.	1,141
CLASS A CONCRETE					
POUR 1 - FOOTINGS				C.Y.	38.9
POUR 2 - COLUMNS				C.Y.	12.8
POUR 3 - CAP				C.Y.	23.5
TOTAL CLASS A CONCRETE				C.Y.	75.2
FOUNDATION EXCAVATION FOR BENT				LUMP SUM	
PILE DRIVING EQUIPMENT SETUP FOR HP 12x53 STEEL PILES				EA.	18
HP 12x53 STEEL PILES					
NO. 18				LIN. FT.	1,170
PILE REDRIVES				EA.	9

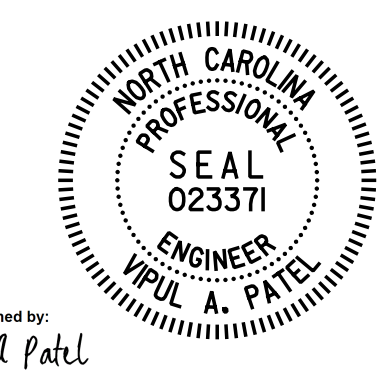


**PLAN OF COLUMNS & FOOTINGS**

REINFORCING STEEL DIMENSIONS AND DETAILS ARE TYPICAL FOR EACH COLUMN AND FOOTING.

DIMENSIONS AND PILE LOCATIONS ARE TYPICAL FOR EACH FOOTING.

PROJECT NO. I-5986B  
JOHNSTON COUNTY  
STATION: 28+39.21 -Y29-



STATE OF NORTH CAROLINA  
DEPARTMENT OF TRANSPORTATION  
RALEIGH  
SUBSTRUCTURE  
**BENT 1 DETAILS**

DOCUMENT NOT CONSIDERED FINAL  
UNLESS ALL SIGNATURES COMPLETED

**Michael Baker INTERNATIONAL**  
Michael Baker Engineering  
8000 Regency Parkway, Suite 600  
Cary, North Carolina 27518  
NC License No.: F-1084

REVISIONS						SHEET NO.
NO.	BY:	DATE:	NO.	BY:	DATE:	S2-21
1			3			TOTAL SHEETS
2			4			28

DRAWN BY : C. E. MAYHEW DATE : 10-11-19  
CHECKED BY : V. A. PATEL DATE : 12-30-19