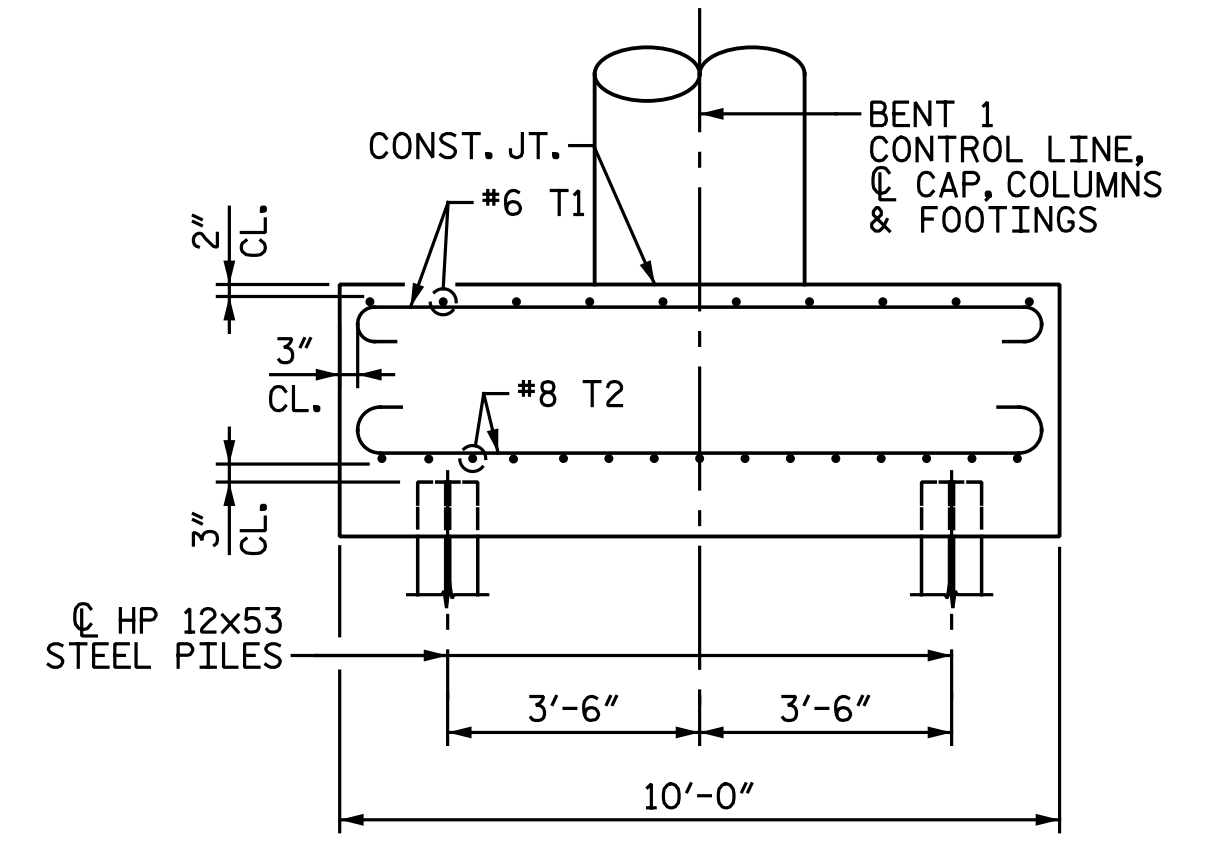
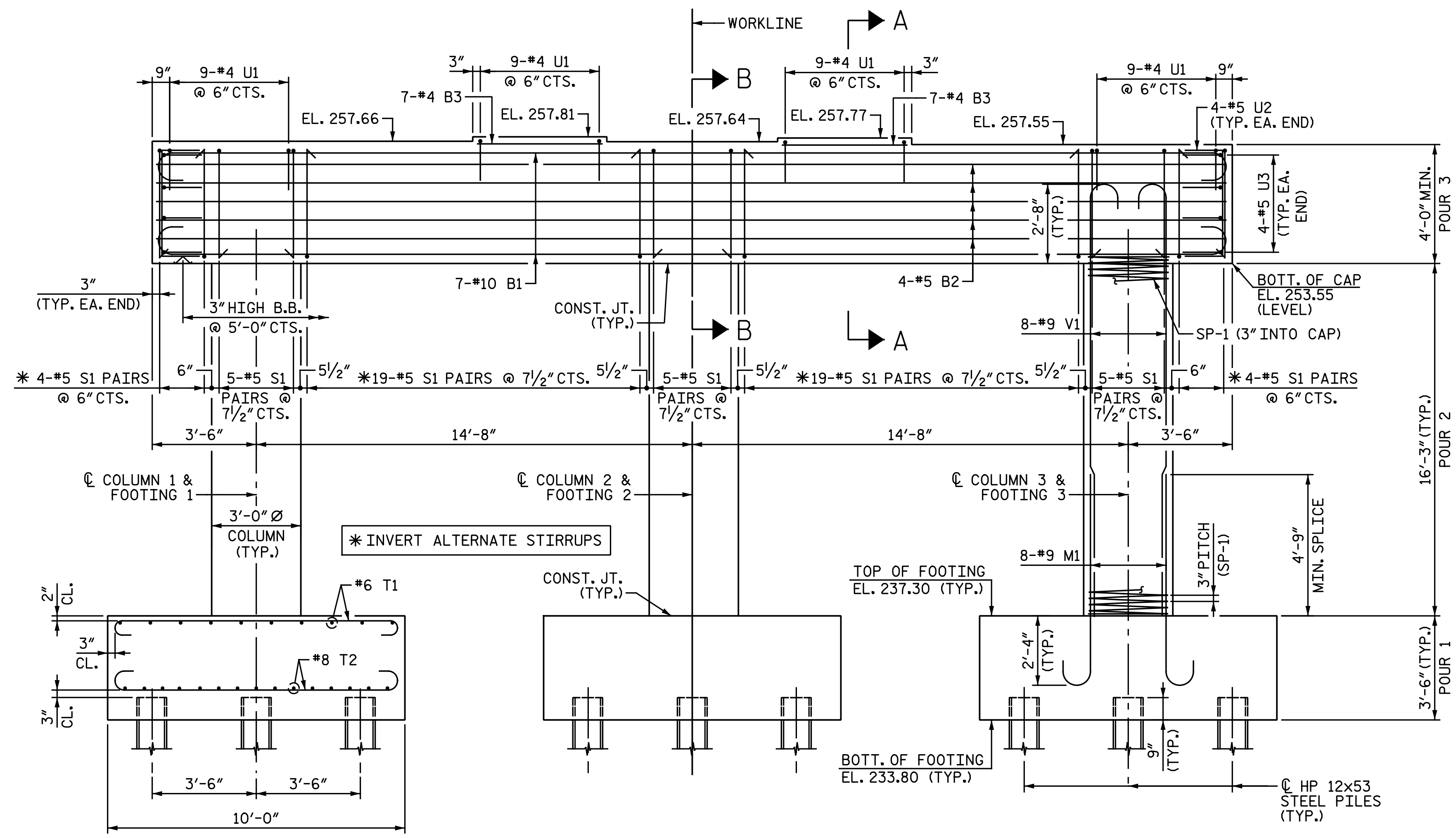
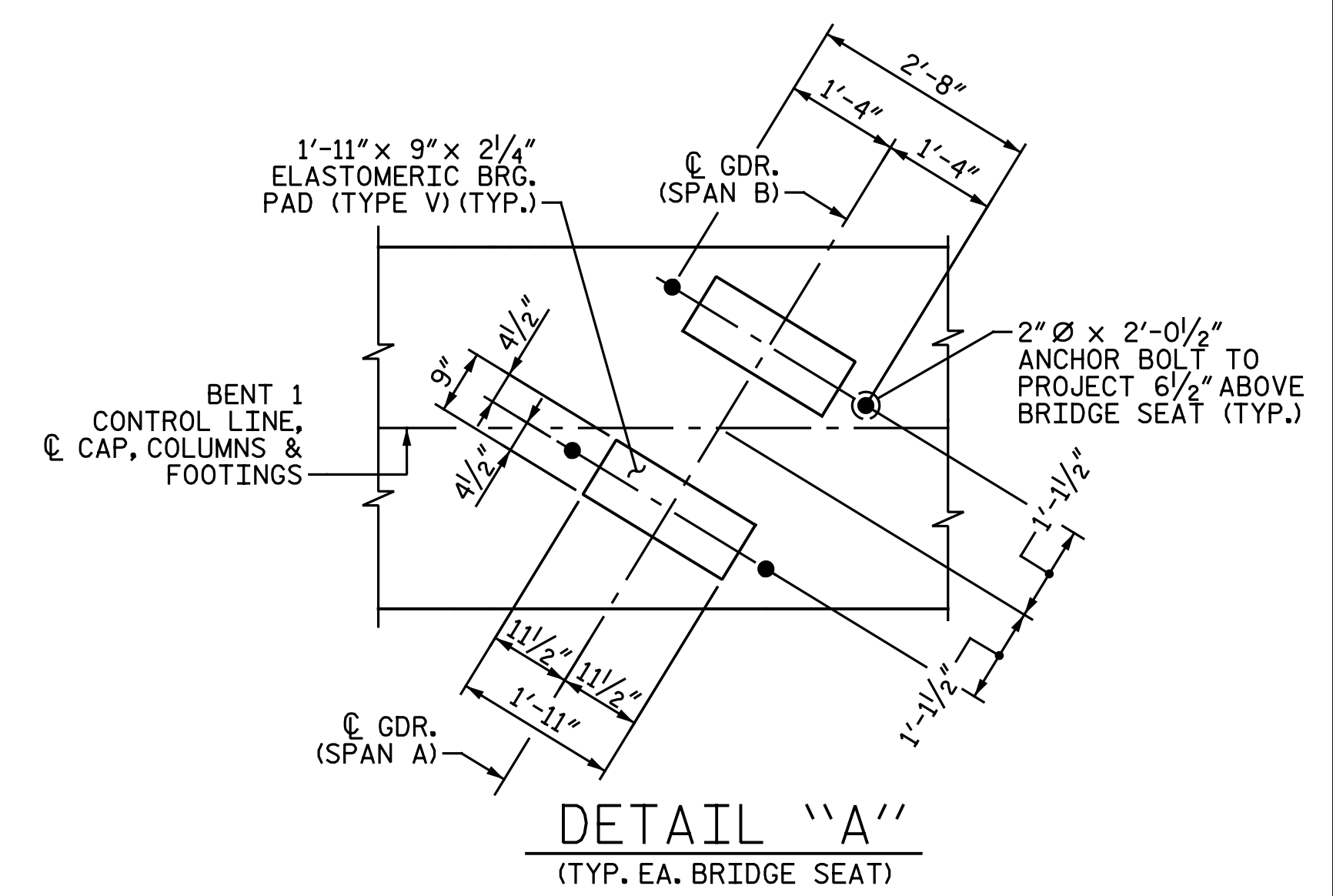


**NOTES:**  
 STIRRUPS AND "U" BARS IN CAP MAY BE SHIFTED AS NECESSARY TO CLEAR ANCHOR BOLTS AND COLUMN REINFORCING STEEL.  
 FOR "SECTION A-A" AND "SECTION B-B", SEE "BENT 1 DETAILS" SHEET.  
 HOOKS ON "V" BARS MAY BE TURNED AS NECESSARY FOR PLACING REINFORCING STEEL.  
 FOR PILE SPLICE DETAILS, SEE "END BENT 2 DETAILS" SHEET.

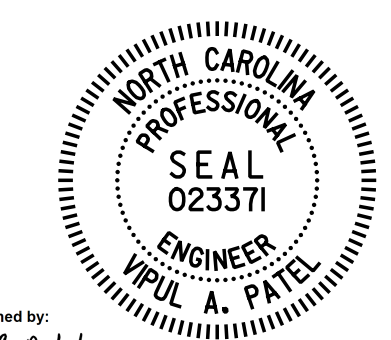


**ELEVATION**

REINFORCING STEEL DIMENSIONS AND DETAILS ARE TYPICAL FOR EACH COLUMN AND FOOTING. DIMENSIONS AND PILE LOCATIONS ARE TYPICAL FOR EACH FOOTING.

**PARTIAL END ELEVATION**  
 (FOR COLUMN REINFORCING STEEL, SEE ELEVATION)

PROJECT NO. I-5986B  
JOHNSTON COUNTY  
 STATION: 28+39.21 -Y29-



DocuSigned by:  
 Vipul A Patel  
 4/13/2020

DOCUMENT NOT CONSIDERED FINAL  
 UNLESS ALL SIGNATURES COMPLETED

<b>Michael Baker INTERNATIONAL</b>	Michael Baker Engineering 8000 Regency Parkway, Suite 600 Cary, North Carolina 27518 NC License No.: F-1084		REVISIONS			SHEET NO. S2-20 TOTAL SHEETS 28
	NO.	BY:	DATE:	NO.	BY:	
1				3		
2				4		

DRAWN BY: C. E. MAYHEW DATE: 11-12-19  
 CHECKED BY: V. A. PATEL DATE: 1-27-20