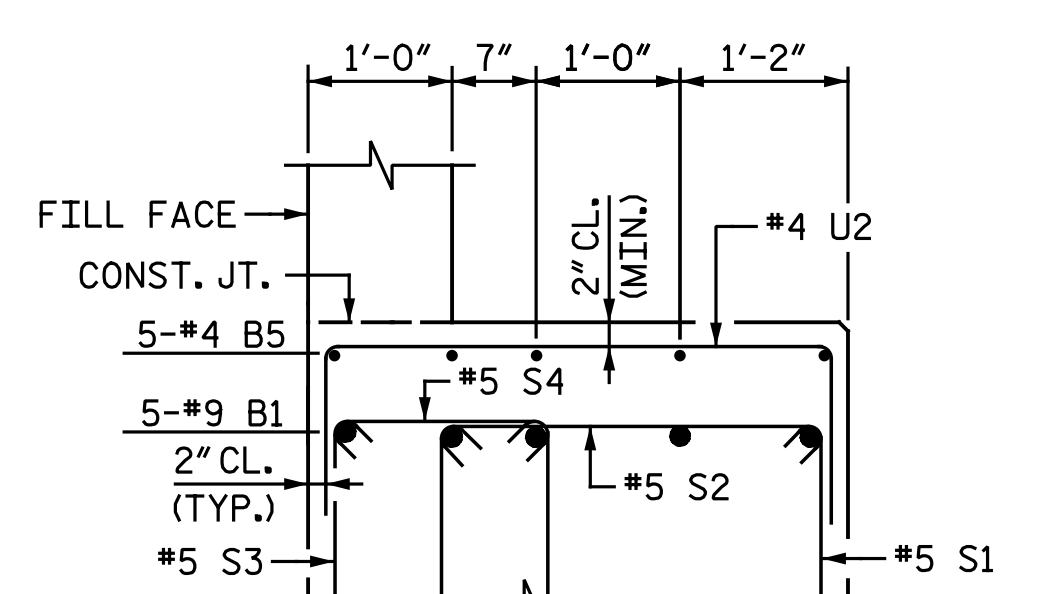
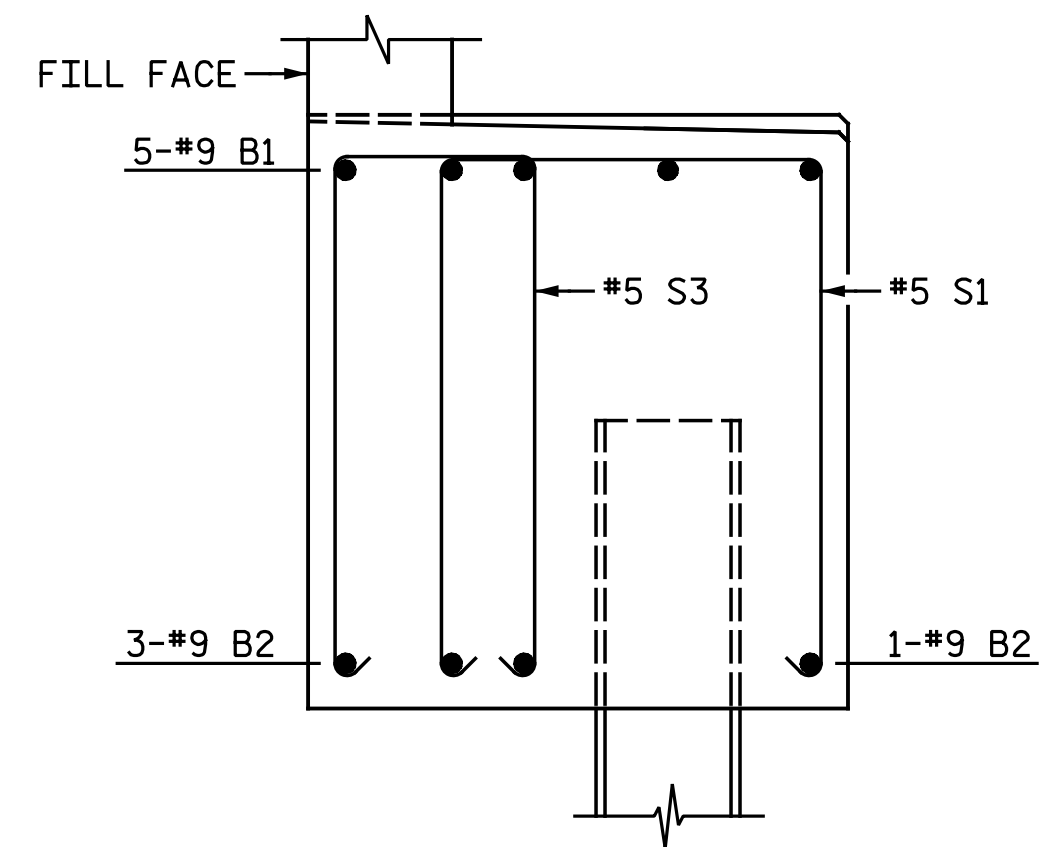


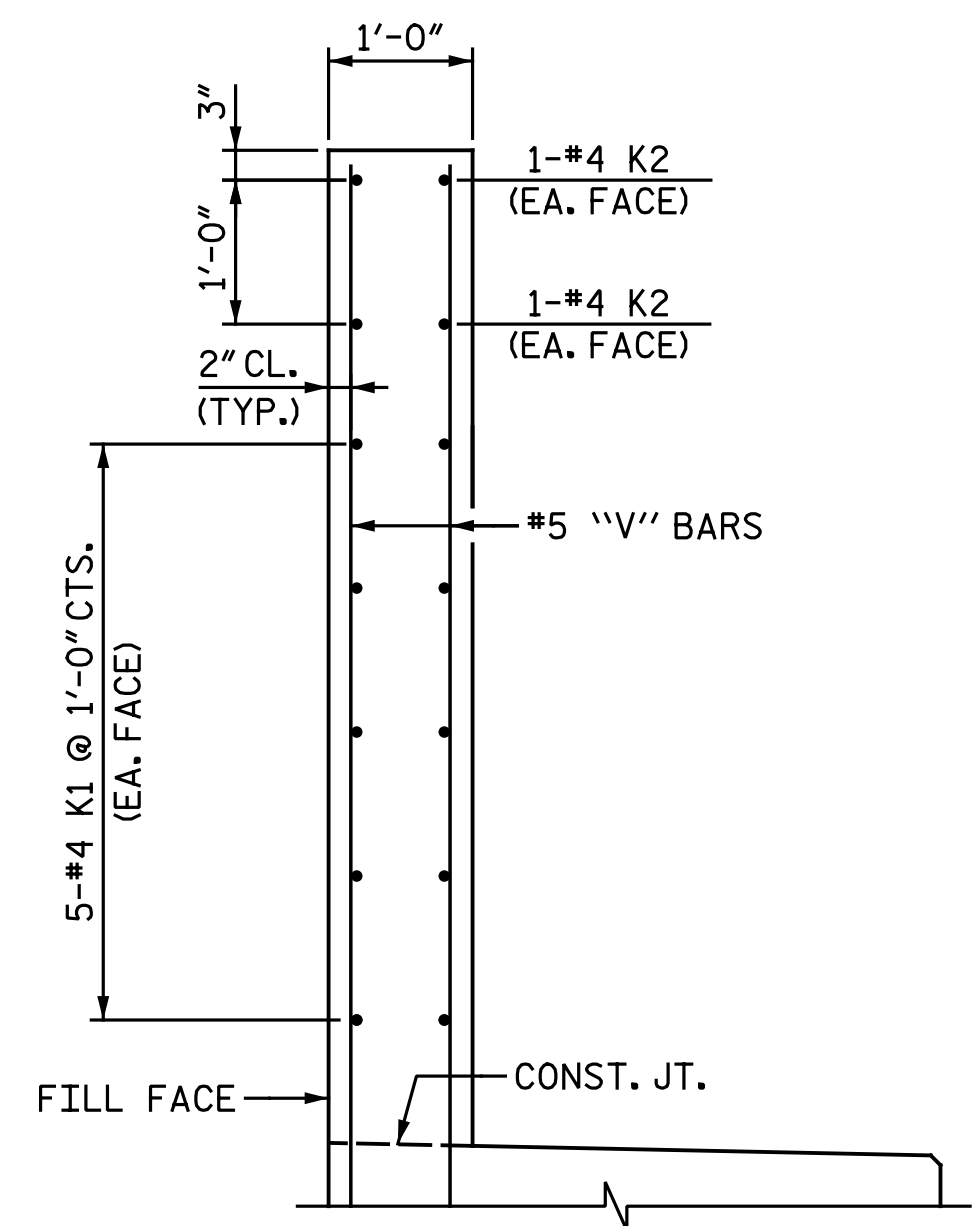
SECTION A-A



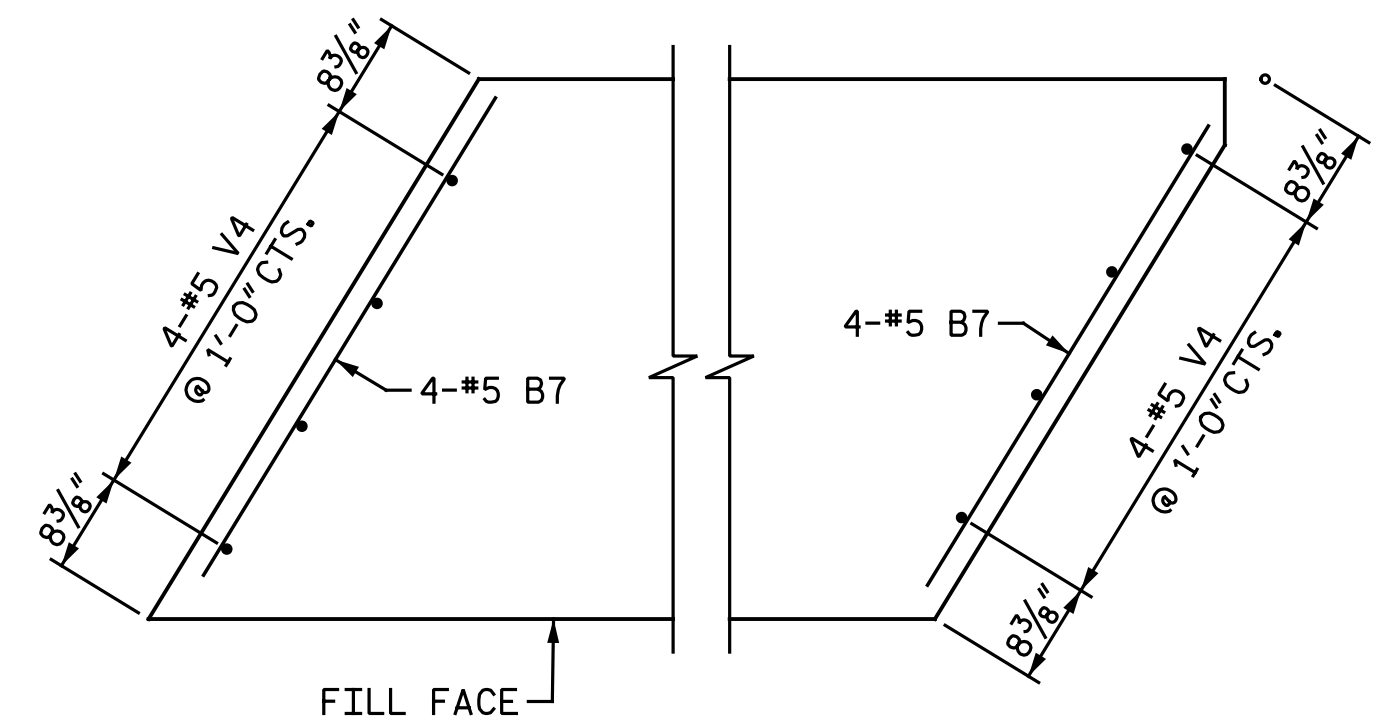
PARTIAL SECTION B-B  
V1 BARS NOT SHOWN FOR CLARITY.



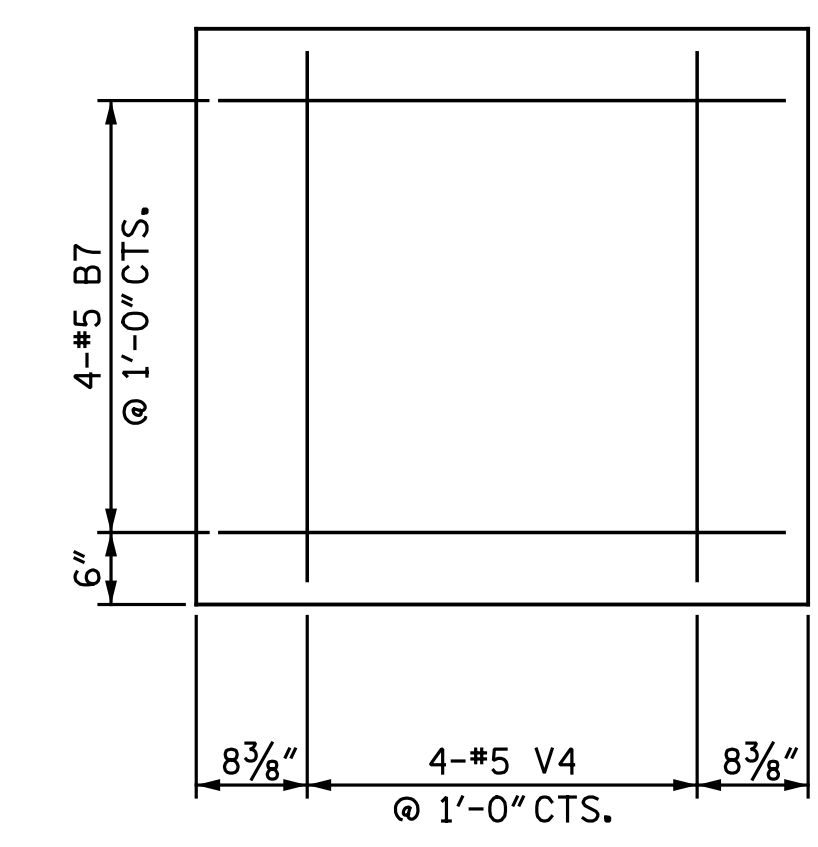
PARTIAL SECTION C-C  
ONLY B1, B2, S1 & S3 BARS SHOWN FOR CLARITY.



PARTIAL SECTION D-D

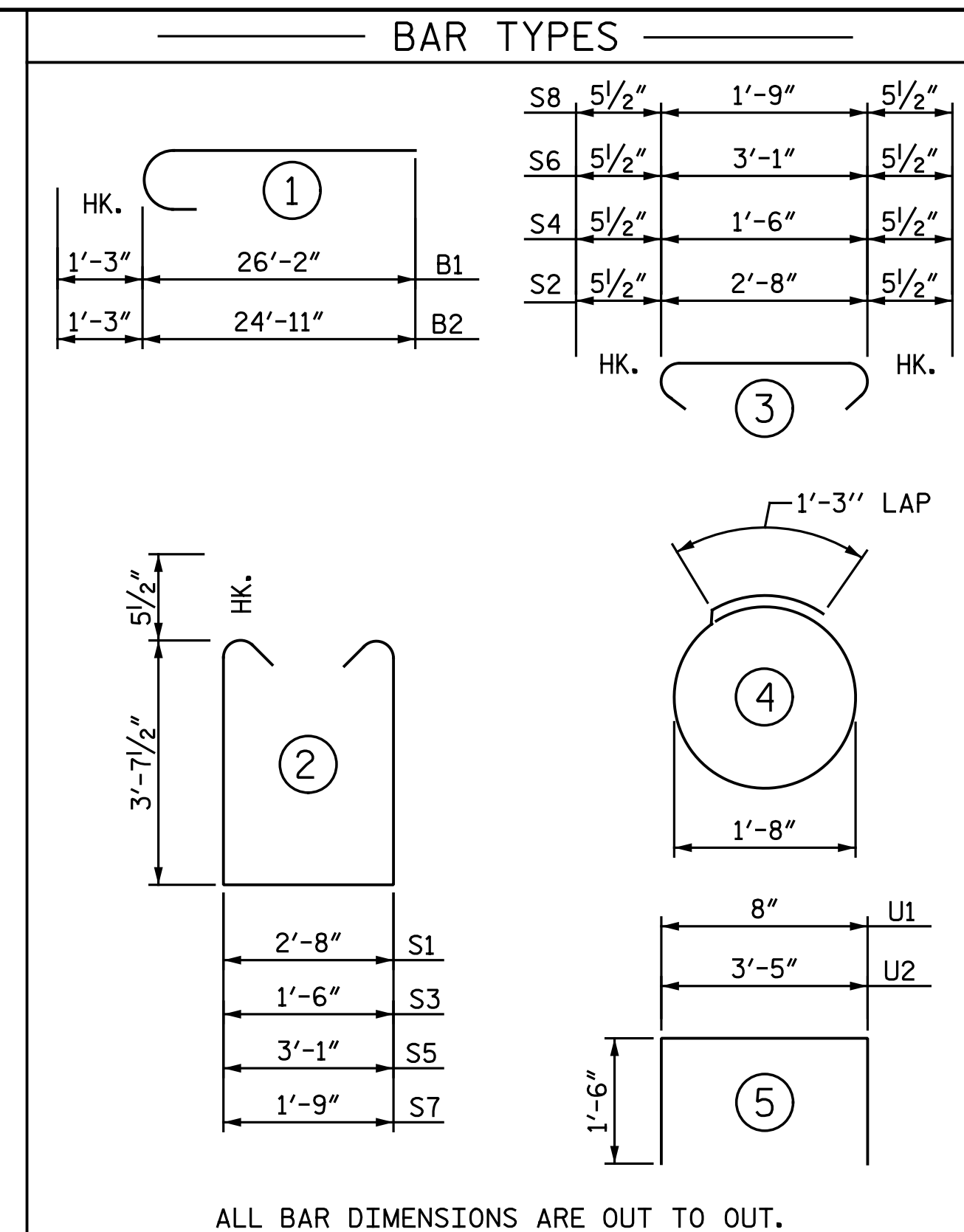


PLAN



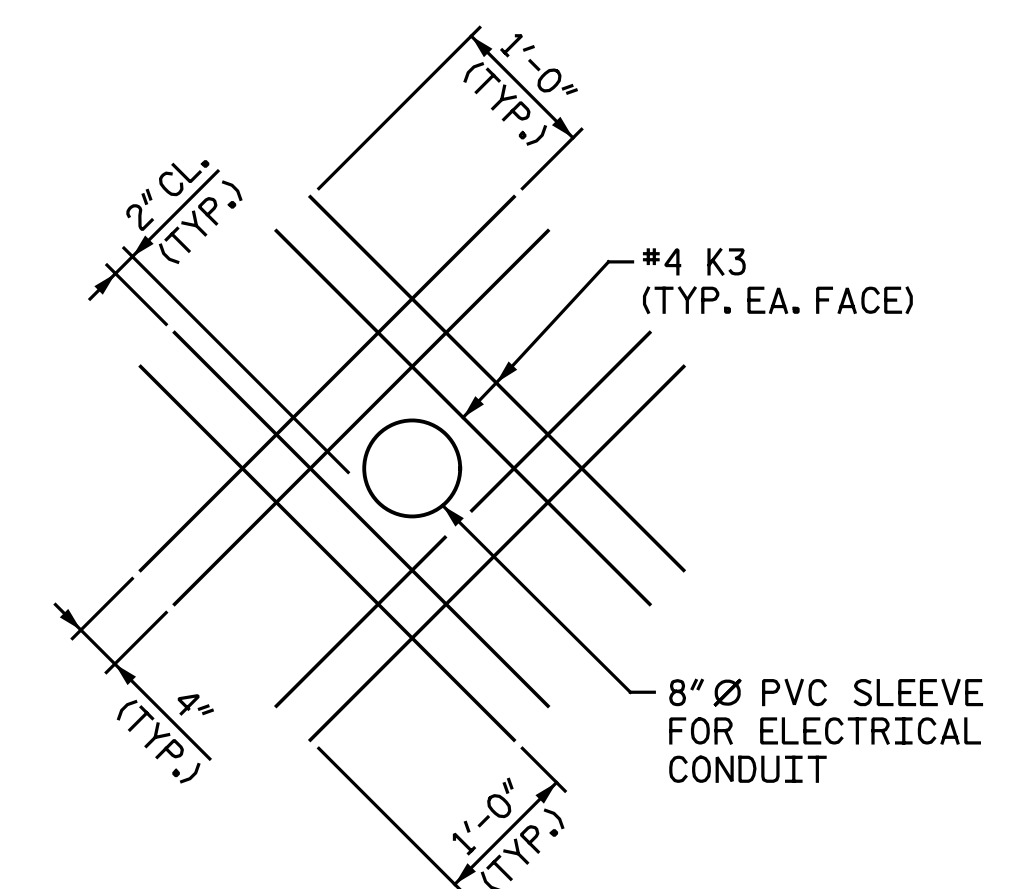
END VIEW

END OF CAP



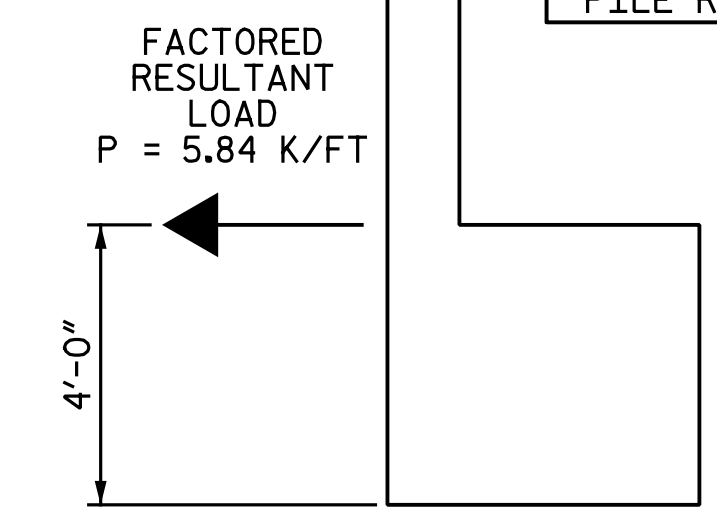
ALL BAR DIMENSIONS ARE OUT TO OUT.

BILL OF MATERIAL					
END BENT 1					
BAR	NO.	SIZE	TYPE	LENGTH	WEIGHT
B1	10	#9	1	27' - 5"	932
B2	8	#9	1	26' - 2"	712
B3	40	#5	STR.	23' - 4"	973
B4	8	#4	STR.	23' - 0"	123
B5	5	#4	STR.	23' - 6"	78
B6	11	#4	STR.	3' - 5"	25
B7	8	#5	STR.	3' - 7"	30
K1	20	#4	STR.	23' - 0"	307
K2	8	#4	STR.	3' - 1"	16
K3	16	#4	STR.	3' - 8"	39
S1	55	#5	2	10' - 10"	621
S2	48	#5	3	3' - 7"	179
S3	55	#5	2	9' - 8"	555
S4	48	#5	3	2' - 5"	121
S5	2	#5	2	11' - 3"	23
S6	2	#5	3	4' - 0"	8
S7	2	#5	2	9' - 11"	21
S8	2	#5	3	2' - 8"	6
S9	28	#4	4	6' - 6"	122
U1	37	#4	5	3' - 8"	91
U2	17	#4	5	6' - 5"	73
V1	74	#5	STR.	7' - 11"	611
V2	8	#5	STR.	9' - 7"	80
V3	8	#5	STR.	9' - 11"	83
V4	8	#5	STR.	3' - 7"	30
REINFORCING STEEL					LBS. 5,859
CLASS A CONCRETE					
POUR 1 - CAP					C.Y. 25.5
POUR 2 - BACKWALL & WINGS					C.Y. 7.8
TOTAL					C.Y. 33.3
PILE DRIVING EQUIPMENT SETUP					
FOR HP 12x53 STEEL PILES					EA. 7
HP 12x53 STEEL PILES					
NO. 7					LIN. FT. 420
PILE REDRIVES					EA. 4



DETAIL "E"

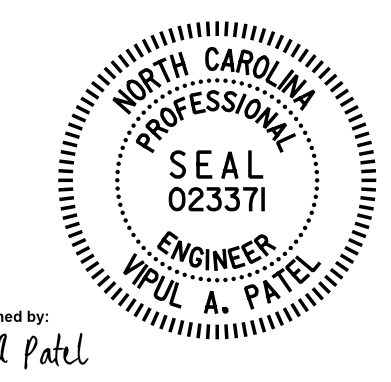
THE PVC SLEEVE THROUGH THE BACKWALL SHALL BE LOCATED BY THE ENGINEER. THE K3 BARS MAY BE SHIFTED AS NECESSARY TO CLEAR TOP OF CAP.



MSE REINFORCING STRAP LOAD DETAIL

MSE REINFORCING STRAPS SHALL BE ATTACHED TO THE END BENT CAP AND/OR BACKWALL. FOR DESIGN CRITERIA AND DETAILS, SEE MSE WALL SHEETS AND SPECIAL PROVISIONS. (END BENT 1 SHOWN, END BENT 2 SIMILAR)

PROJECT NO. I-5986B  
JOHNSTON COUNTY  
STATION: 28+39.21 -Y29-



DocuSigned by:  
Vipul A Patel  
4/13/2020

DOCUMENT NOT CONSIDERED FINAL  
UNLESS ALL SIGNATURES COMPLETED

Michael Baker International  
Michael Baker Engineering  
8000 Regency Parkway, Suite 600  
Cary, North Carolina 27518  
NC License No.: F-1084

STATE OF NORTH CAROLINA  
DEPARTMENT OF TRANSPORTATION  
RALEIGH  
SUBSTRUCTURE  
END BENT 1  
DETAILS

REVISIONS						SHEET NO.
NO.	BY:	DATE:	NO.	BY:	DATE:	
1			3			TOTAL SHEETS
2			4			28

DRAWN BY: C. E. MAYHEW DATE: 8-29-19  
CHECKED BY: V. A. PATEL DATE: 12-30-19