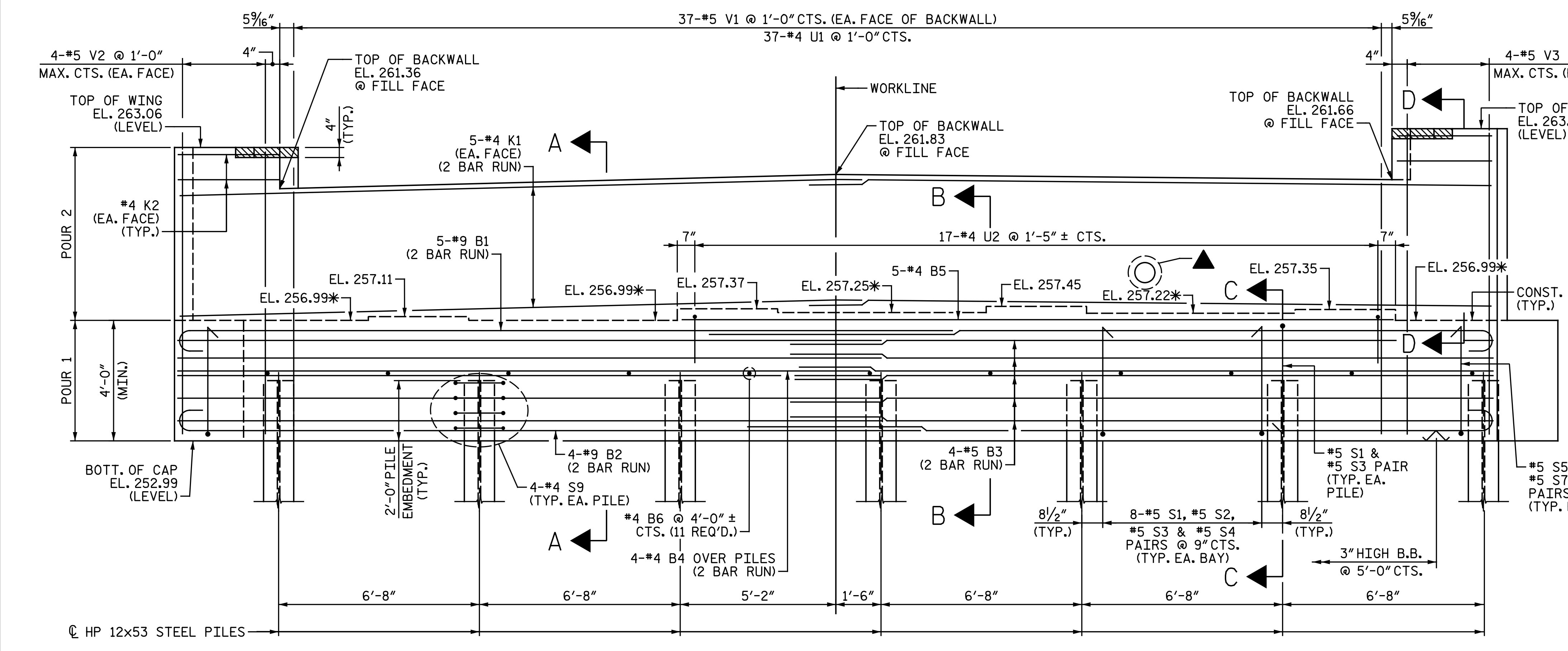


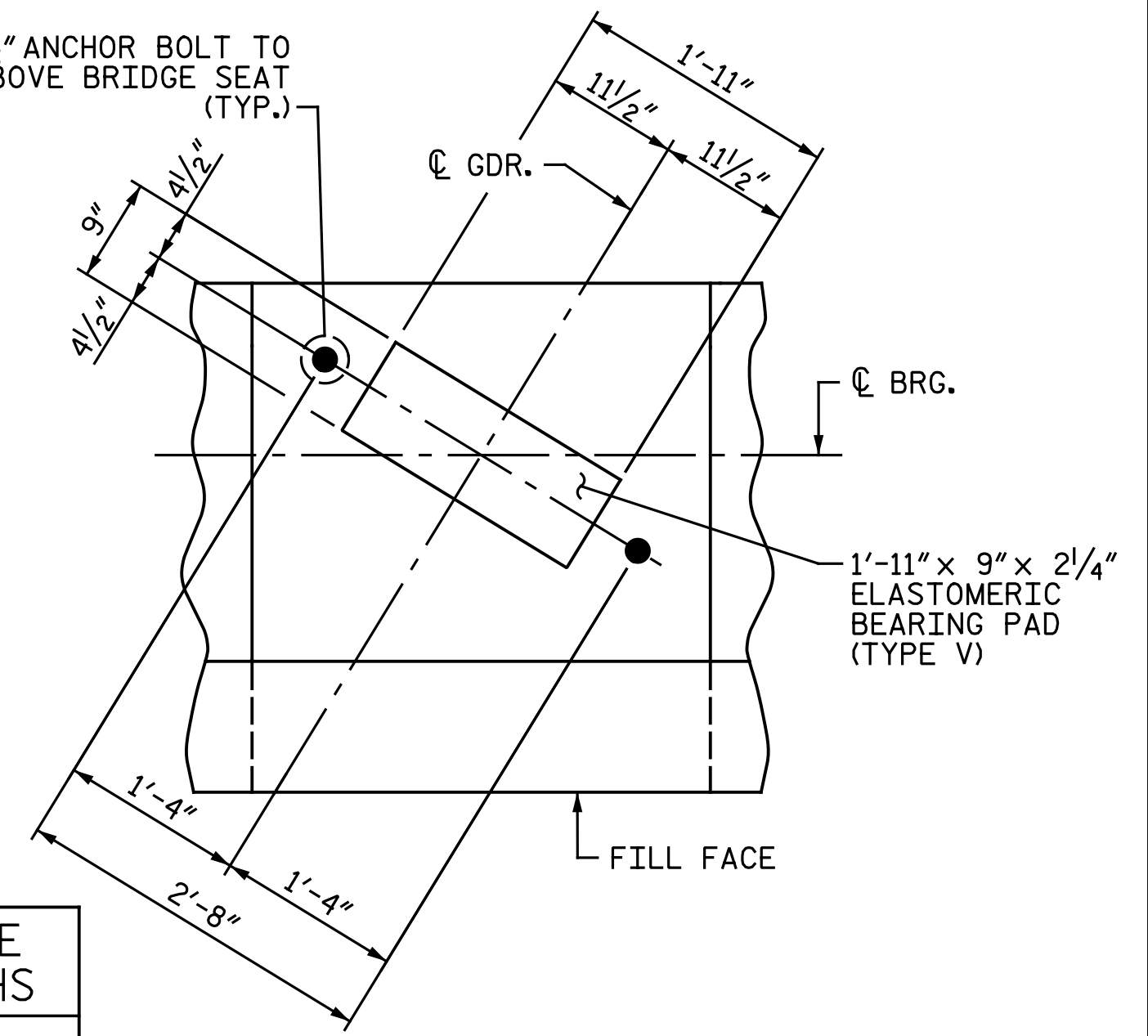
PLAN

NOTES:
 FOR "SECTION A-A", "PARTIAL SECTION B-B", "PARTIAL SECTION C-C" AND "PARTIAL SECTION D-D", SEE "END BENT 1 DETAILS" SHEET.
 STIRRUPS & U2 BARS IN CAP MAY BE SHIFTED AS NECESSARY TO CLEAR ANCHOR BOLTS.
 BACKWALL SHALL BE PLACED BEFORE APPLYING THE EPOXY PROTECTIVE COATING.
 THE TOP SURFACE AREAS OF THE END BENT CAP SHALL BE CURED IN ACCORDANCE WITH THE STANDARD SPECIFICATIONS EXCEPT THE MEMBRANE CURING COMPOUND METHOD SHALL NOT BE USED.
 THE TOP SURFACE OF THE CAP EXCEPT THE BRIDGE SEAT BUILDUPS SHALL BE SLOPED TRANSVERSELY FROM THE FILL FACE TO THE BACK FACE AT THE RATE OF 2%.
 THE CONCRETE IN THE HATCHED AREA OF THE WING SHALL BE POURED AFTER THE JOINT BETWEEN THE DECK AND THE APPROACH SLAB HAS BEEN SAWED AND THE BARRIER RAIL IS CAST IF SLIP FORMING IS USED.
 FOR MSE WALLS, SEE SPECIAL PROVISIONS.
 FOR LOCATION OF MSE WALL AND PILE SLEEVES, SEE MSE WALL PLANS.
 LENGTH OF CAP AND EACH WING SHALL BE FIELD ADJUSTED AS REQUIRED TO PROVIDE 1" EXPANSION JOINT MATERIAL AS SHOWN BETWEEN THESE COMPONENTS AND THE MSE WALL COPING.
 FOR PILE SPLICE DETAILS, SEE "END BENT 2 DETAILS" SHEET.
 V1 AND K1 BARS IN BACKWALL MAY BE SHIFTED AS NECESSARY TO CLEAR CONDUIT OPENING.



ELEVATION

2" Ø x 2'-0 1/2" ANCHOR BOLT TO PROJECT 6 1/2" ABOVE BRIDGE SEAT (TYP.)



DETAIL "A"
(TYP. EA. BRIDGE SEAT)

SPLICE LENGTHS	
BAR SIZE	UNCOATED
#4	2'-5"
#5	3'-0"
#9 B1	8'-9"
#9 B2	6'-3"

PROJECT NO. I-5986B
 JOHNSTON COUNTY
 STATION: 28+39.21 -Y29-



STATE OF NORTH CAROLINA
 DEPARTMENT OF TRANSPORTATION
 RALEIGH
 SUBSTRUCTURE
 END BENT 1

DOCUMENT NOT CONSIDERED FINAL UNLESS ALL SIGNATURES COMPLETED

NO.	BY:	DATE:	REVISIONS			SHEET NO.
			NO.	BY:	DATE:	
1			3			TOTAL SHEETS 28
2			4			

DRAWN BY: C. E. MAYHEW DATE: 7-9-19
 CHECKED BY: V. A. PATEL DATE: 1-27-20

▲ CONDUIT OPENING. SEE DETAIL "E" ON "END BENT 1 DETAILS" SHEET.
 FOR END OF CAP REINFORCEMENT, SEE END BENT 1 DETAILS SHEET.

* FOR LOCATION OF ELEVATIONS BETWEEN BRIDGE SEAT BUILD-UPS, SEE "SECTION A-A" ON "END BENT 1 DETAILS" SHEET.

Michael Baker International
 Michael Baker Engineering
 8000 Regency Parkway, Suite 600
 Cary, North Carolina 27518
 NC License No.: F-1084