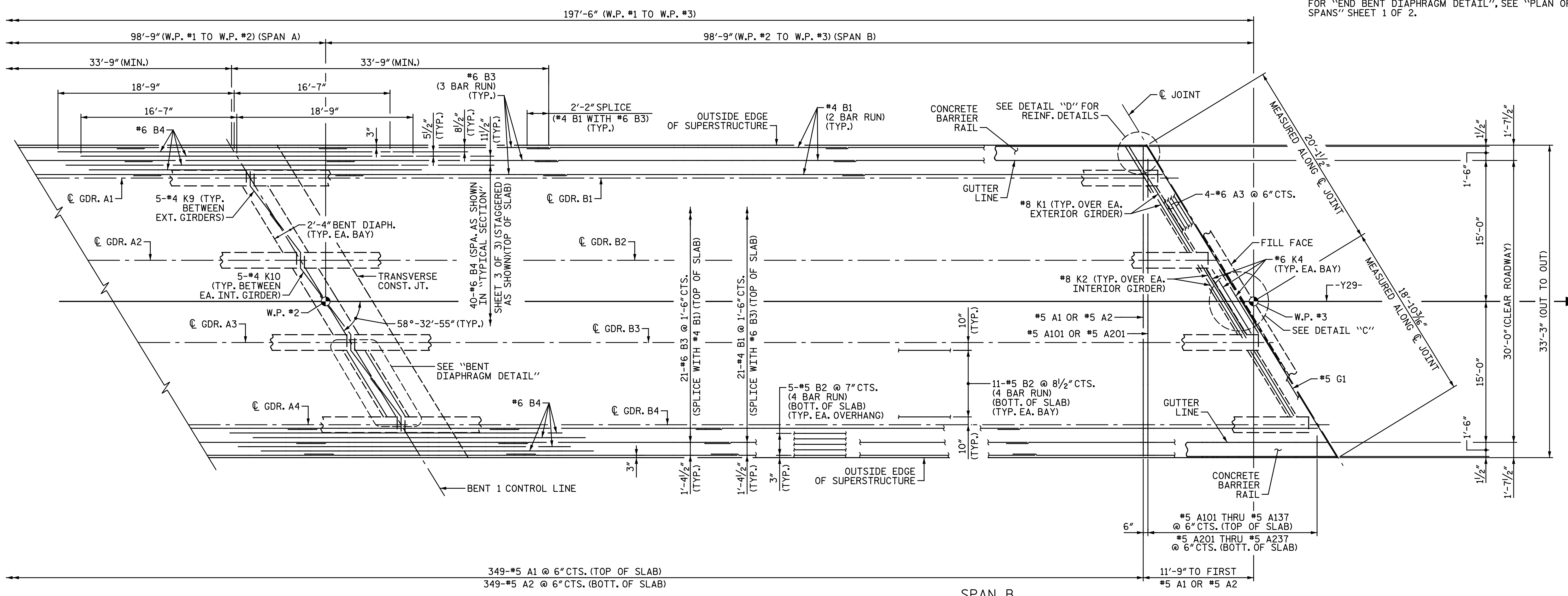


NOTES:
 FOR "END BENT DIAPHRAGM DETAIL", SEE "PLAN OF SPANS" SHEET 1 OF 2.

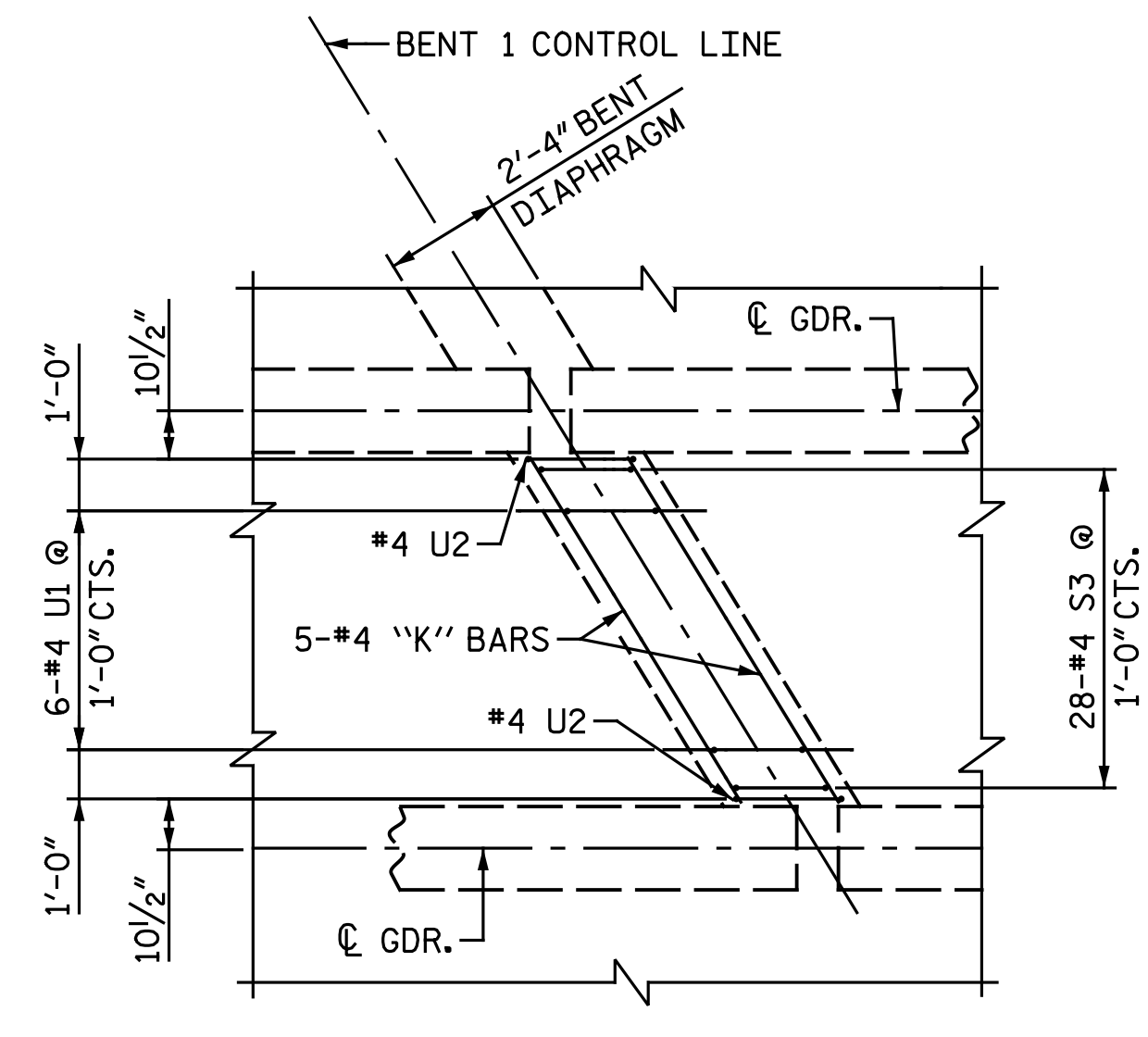
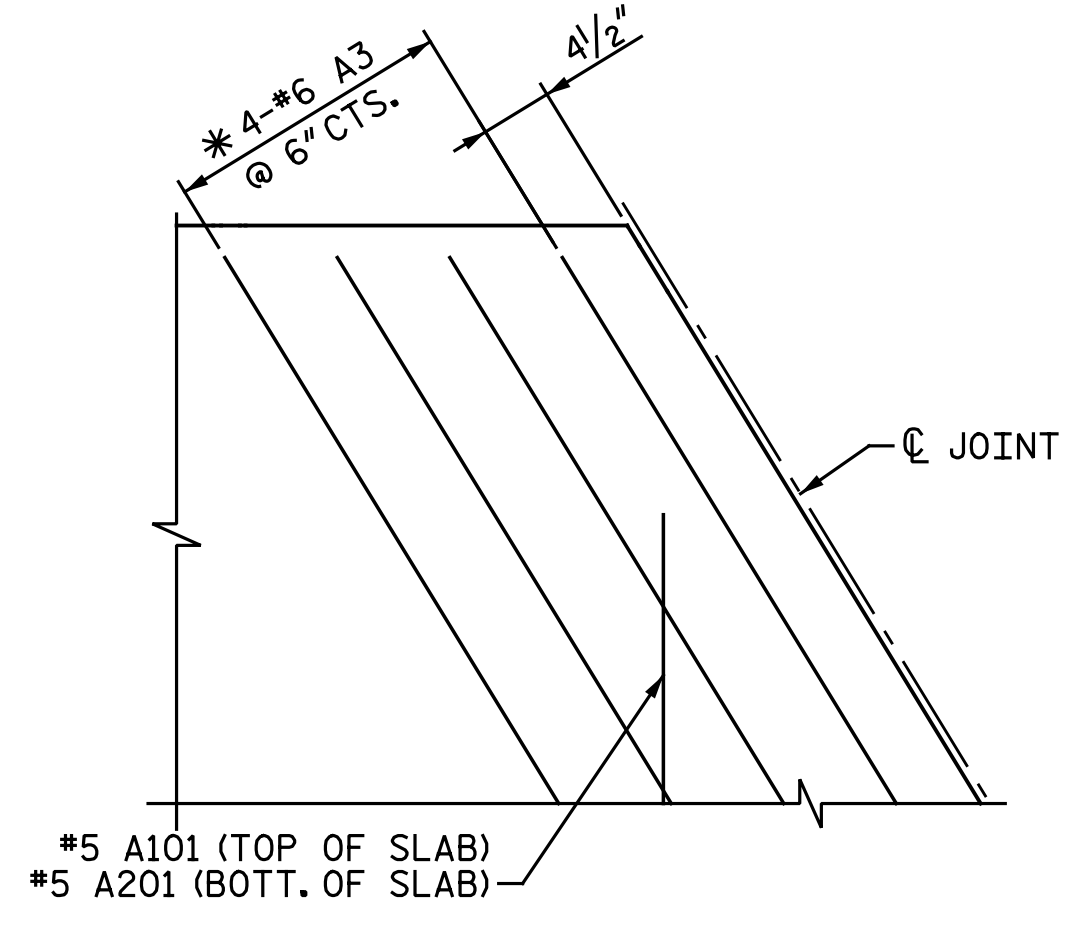
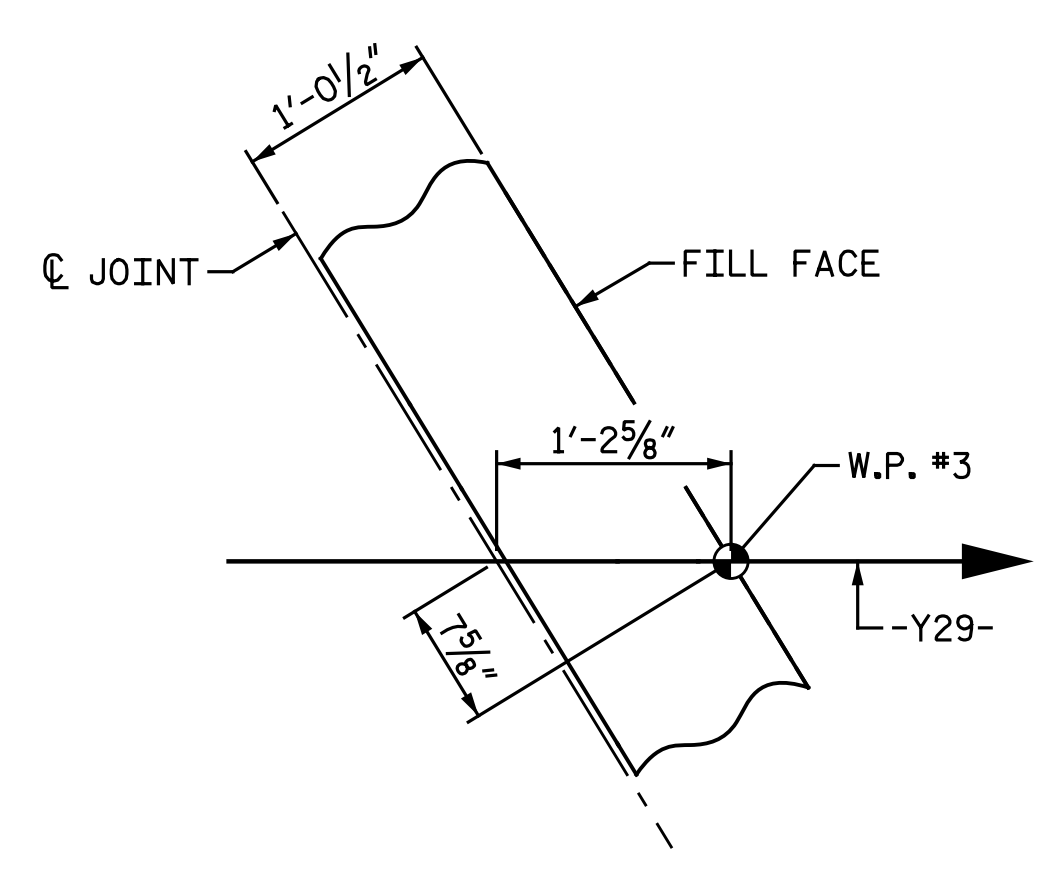
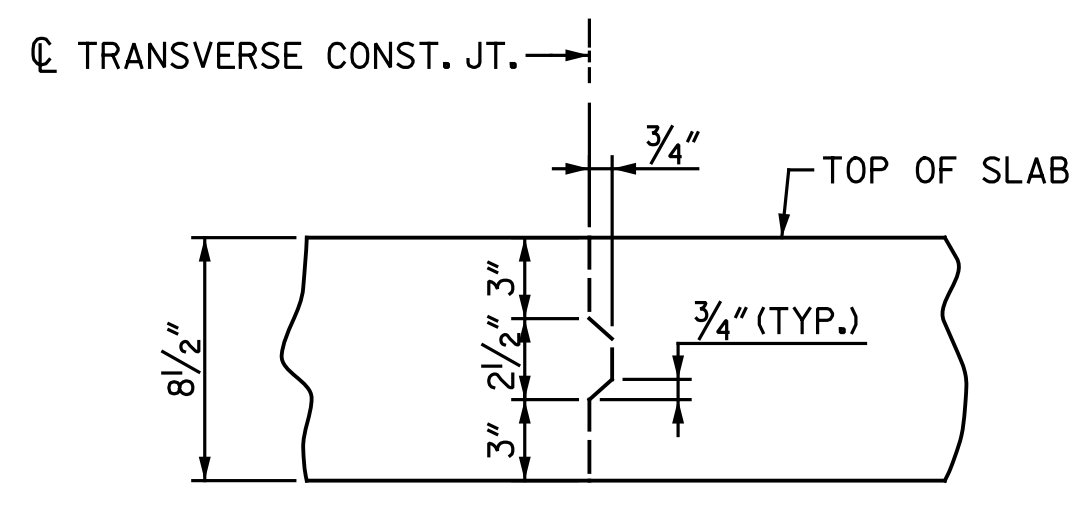


SPAN A

PLAN OF SPAN

SPAN B

| SPLICE LENGTHS | | |
|----------------|--------------|----------|
| BAR SIZE | EPOXY COATED | UNCOATED |
| #4 | 2'-0" | 1'-9" |
| #5 | 2'-6" | 2'-2" |
| #6 | 3'-0" | 2'-7" |



TRANSVERSE CONST. JT. DETAIL
 REINFORCING STEEL IN SLAB NOT SHOWN.
 REINFORCING STEEL SHALL BE CONTINUOUS THROUGH JOINT.

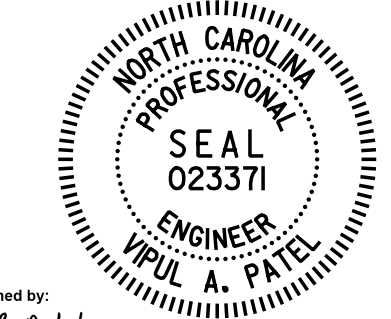
DETAIL "C"

DETAIL "D"

BENT DIAPHRAGM DETAIL
 K9 & K10 BARS NOT SHOWN FOR CLARITY (TYP. EA. BAY)

*#6 A3 BARS ARE TO BE PLACED PARALLEL TO SKEW, SPACED AS SHOWN, AND LOCATED BELOW B1 BARS. SEE ALSO "SECTION THRU END BENT DIAPHRAGM" DETAIL ON "TYPICAL SECTION" SHEET 2 OF 3.

PROJECT NO. I-5986B
 JOHNSTON COUNTY
 STATION: 28+39.21 -Y29-
 SHEET 2 OF 2



DocuSigned by:
 Vipul A. Patel
 4/13/2020

DOCUMENT NOT CONSIDERED FINAL
 UNLESS ALL SIGNATURES COMPLETED

Michael Baker International
 Michael Baker Engineering
 8000 Regency Parkway, Suite 600
 Cary, North Carolina 27518
 NC License No.: F-1084

| STATE OF NORTH CAROLINA DEPARTMENT OF TRANSPORTATION RALEIGH | | | | | |
|--|-----|-------|-----|-----|-----------------|
| SUPERSTRUCTURE | | | | | |
| PLAN OF SPANS | | | | | |
| REVISIONS | | | | | SHEET NO. |
| NO. | BY: | DATE: | NO. | BY: | DATE: |
| 1 | | | 3 | | |
| 2 | | | 4 | | |
| | | | | | S2-9 |
| | | | | | TOTAL SHEETS 28 |

DRAWN BY: P. SMITH DATE: 6-27-19
 CHECKED BY: V.A. PATEL DATE: 1-27-20