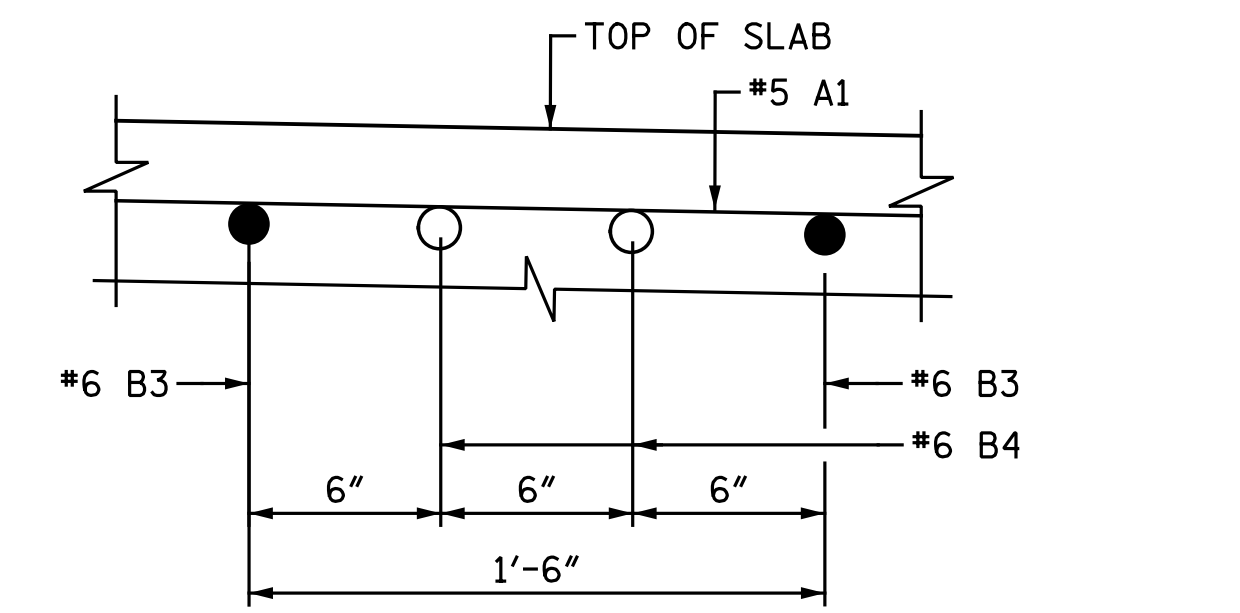
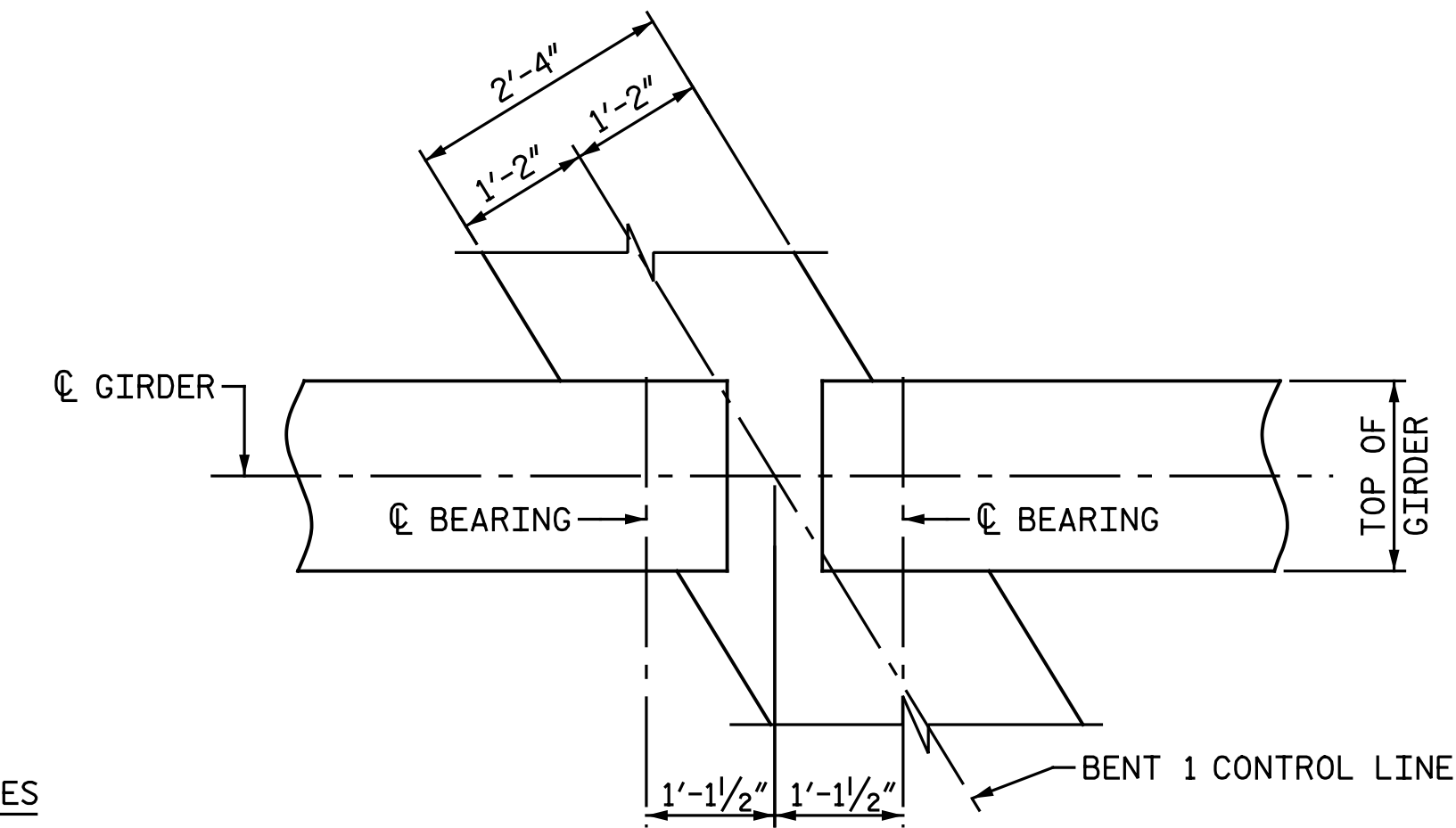


TYPICAL SECTION @ BENT DIAPHRAGM

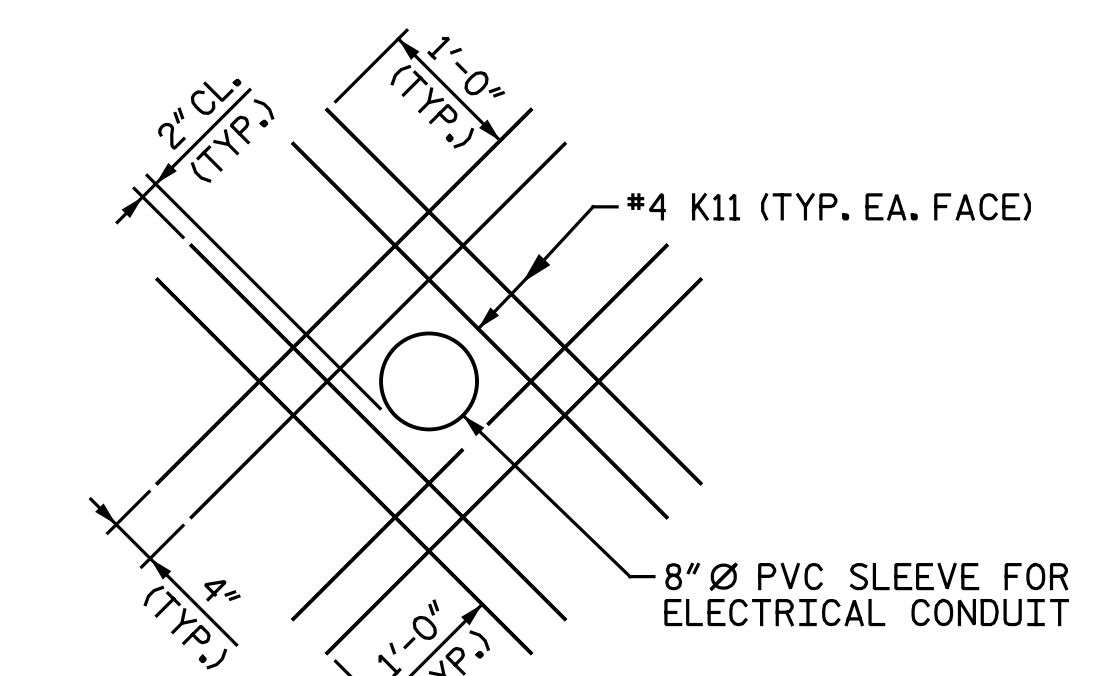
** FOR ELECTRICAL CONDUIT SYSTEM FOR SIGNALS, SEE "ELECTRICAL CONDUIT SYSTEM FOR SIGNALS" SHEET.



DETAIL "B"

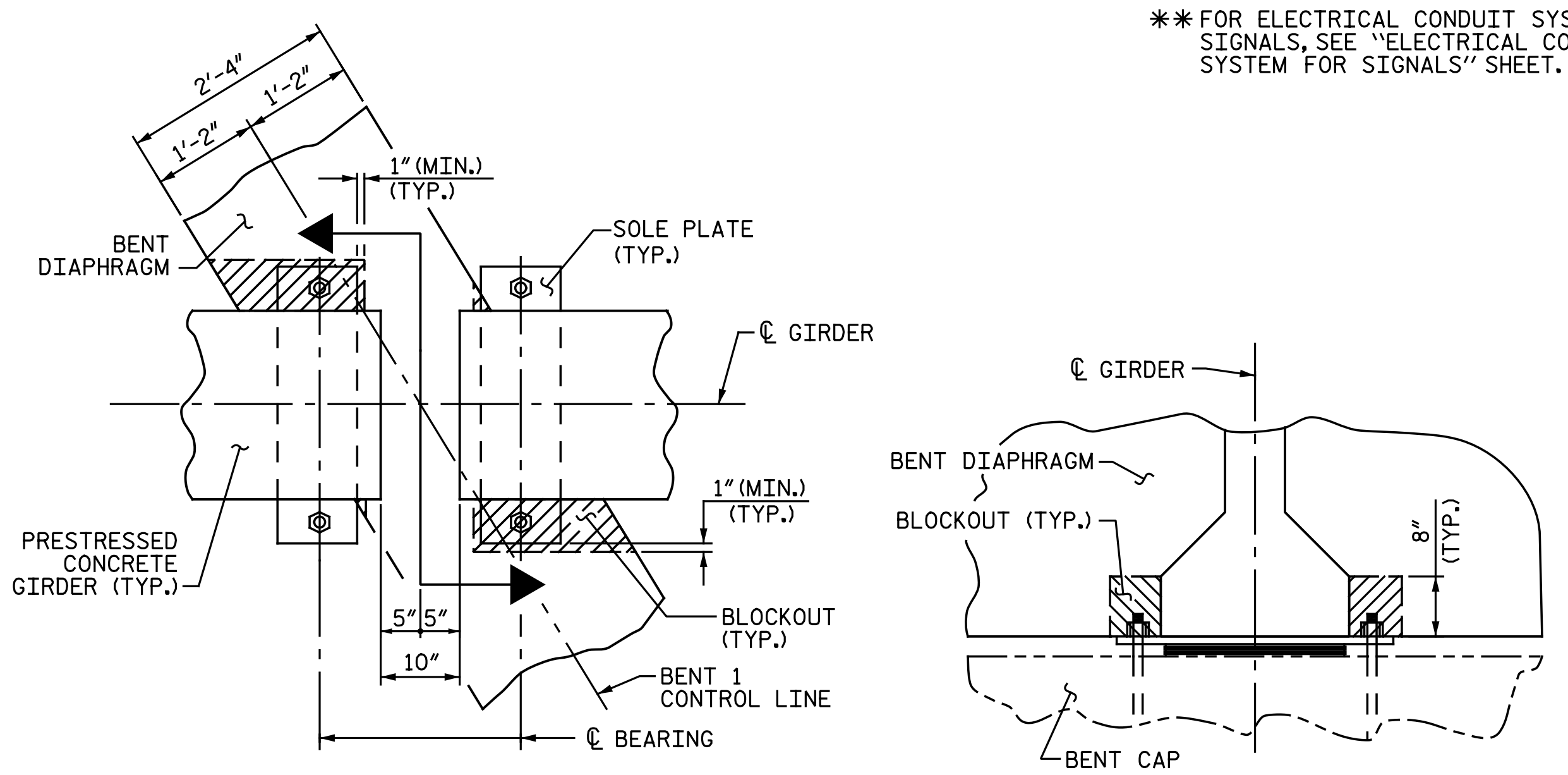


PLAN AT BENT DIAPHRAGM



DETAIL "E"

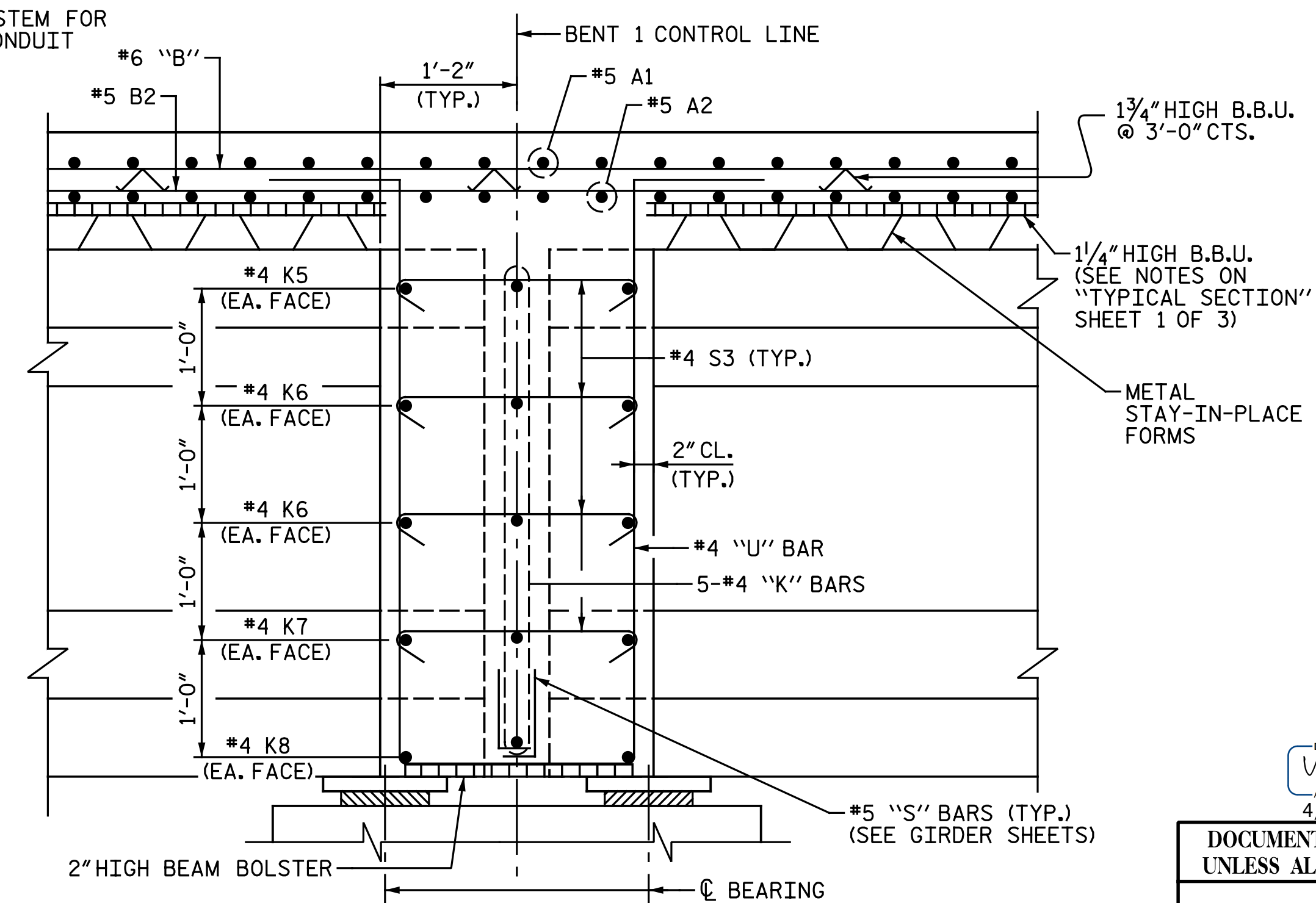
THE PVC SLEEVE THROUGH THE DIAPHRAGM SHALL BE LOCATED BY THE ENGINEER.
THE K11 BARS MAY BE CUT OR SHIFTED AS NECESSARY TO CLEAR BOTTOM OF DIAPHRAGM.



PLAN

SECTION

BENT DIAPHRAGM BLOCKOUT DETAIL



SECTION THROUGH BENT DIAPHRAGM

PROJECT NO. I-5986B
JOHNSTON COUNTY
STATION: 28+39.21 -Y29-

SHEET 3 OF 3



DocuSigned by:
Vipul A Patel
4/13/2020

DOCUMENT NOT CONSIDERED FINAL
UNLESS ALL SIGNATURES COMPLETED

| REVISIONS | | SHEET NO. | |
|-----------|------|-----------|------|
| NO. | DATE | NO. | DATE |
| 1 | | 3 | |
| 2 | | 4 | |

Michael Baker International
Michael Baker Engineering
8000 Regency Parkway, Suite 600
Cary, North Carolina 27518
NC License No.: F-1084

DRAWN BY: P. SMITH DATE: 9-25-19
CHECKED BY: V. A. PATEL DATE: 12-30-19