

NOTES

THE COST OF THE BARRIER RAIL ON THE APPROACH SLAB SHALL BE INCLUDED IN THE LINEAR FOOT CONTRACT PRICE BID FOR "CONCRETE BARRIER RAIL".

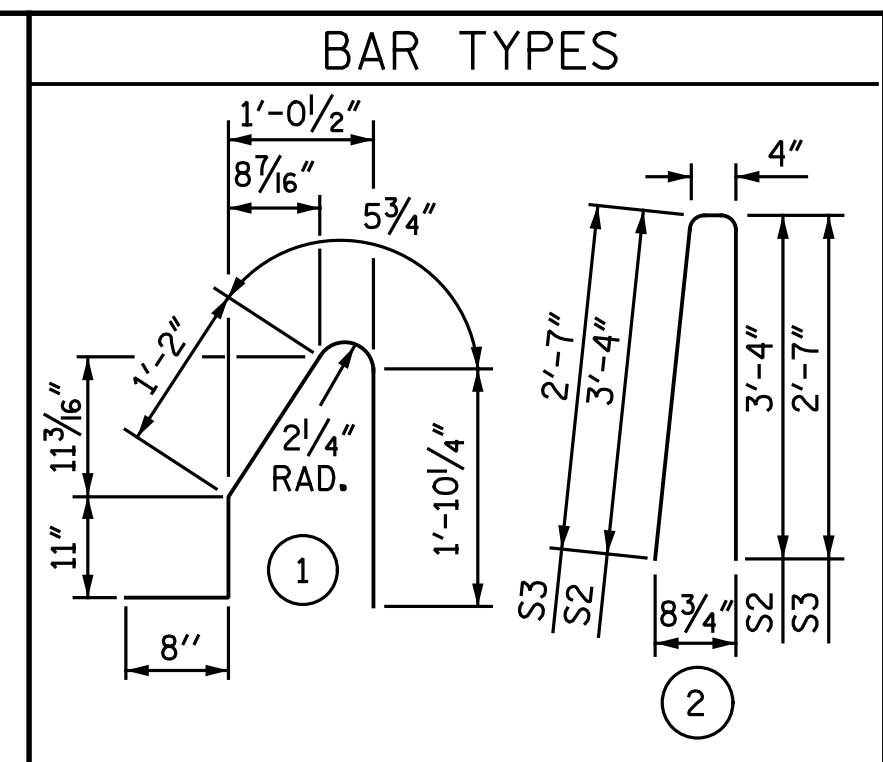
THE BARRIER RAIL ON EACH APPROACH SLAB SHALL NOT BE CAST UNTIL ALL APPROACH SLAB CONCRETE HAS BEEN CAST AND HAS REACHED A MINIMUM COMPRESSIVE STRENGTH OF 3,000 PSI.

ALL REINFORCING STEEL IN BARRIER RAILS SHALL BE EPOXY COATED.

TEMPORARY DRAIN BLOCKOUTS FOR STAGE I (LEFT AND RIGHT SIDE) CONDITIONS SHALL BE FILLED WITH APPROVED GROUT UPON COMPLETION OF STAGE II CONSTRUCTION.

TEMPORARY DRAIN BLOCKOUTS MAY BE SHIFTED SLIGHTLY, AS NECESSARY, TO AVOID INTERFERENCE WITH CONCRETE BARRIER RAIL REINFORCEMENT AND RUBRAIL ANCHORAGE.

THE COST OF THE PVC GROUT VENTS SHALL BE INCLUDED IN THE UNIT PRICE BID FOR CONCRETE BARRIER RAIL.



ALL BAR DIMENSIONS ARE OUT TO OUT

BILL OF MATERIAL

BARRIER RAIL ONLY

STAGE I (LEFT SIDE)

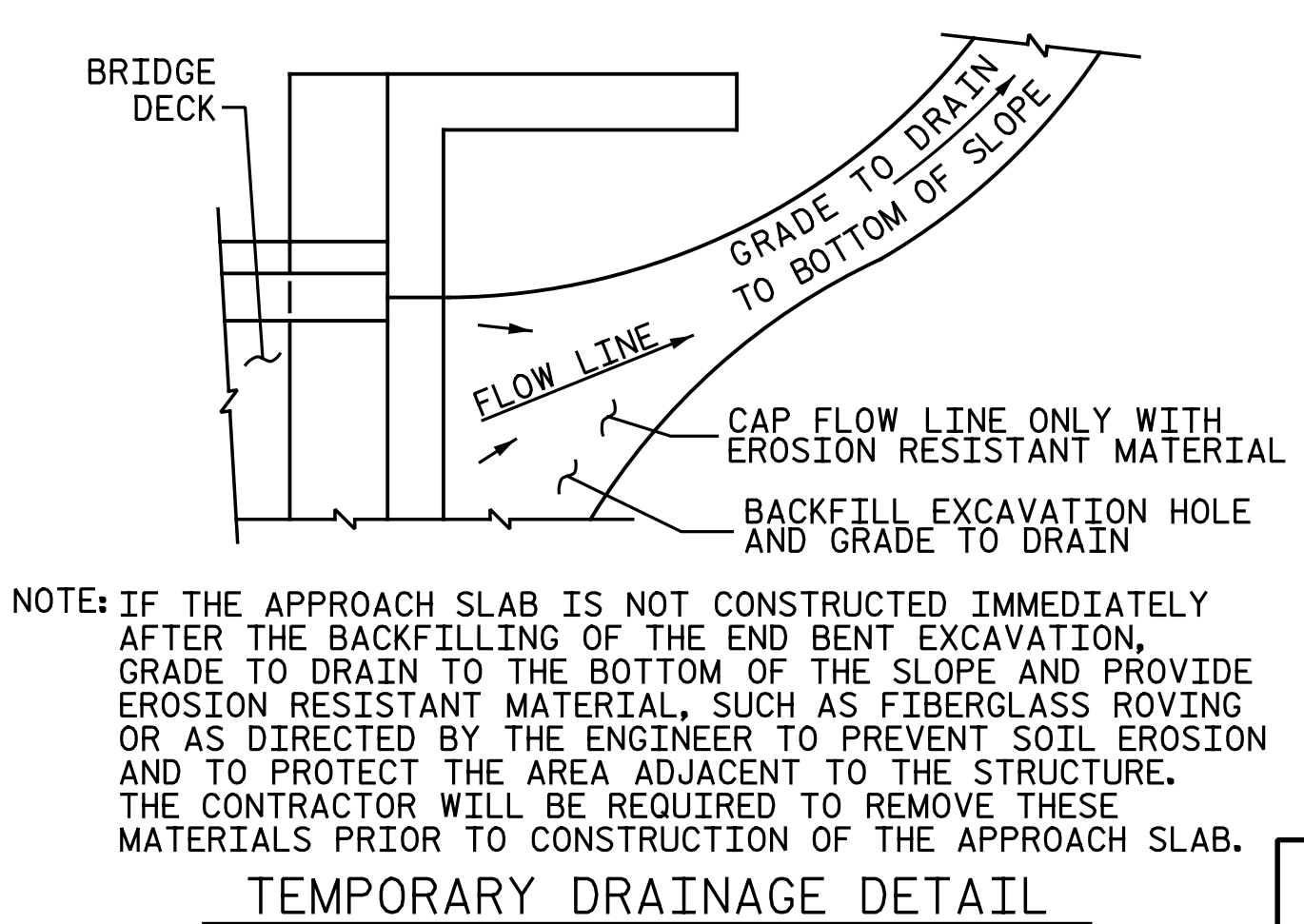
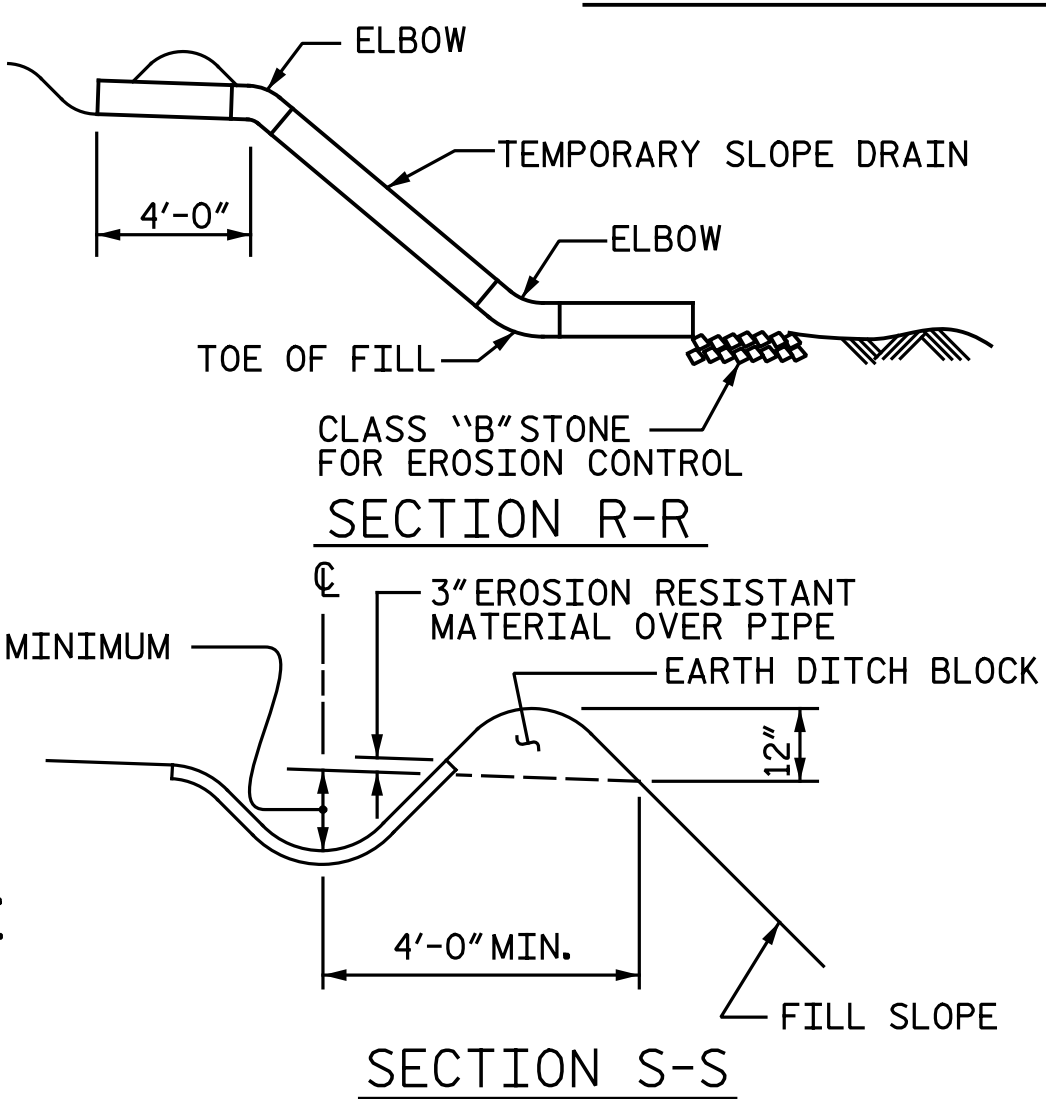
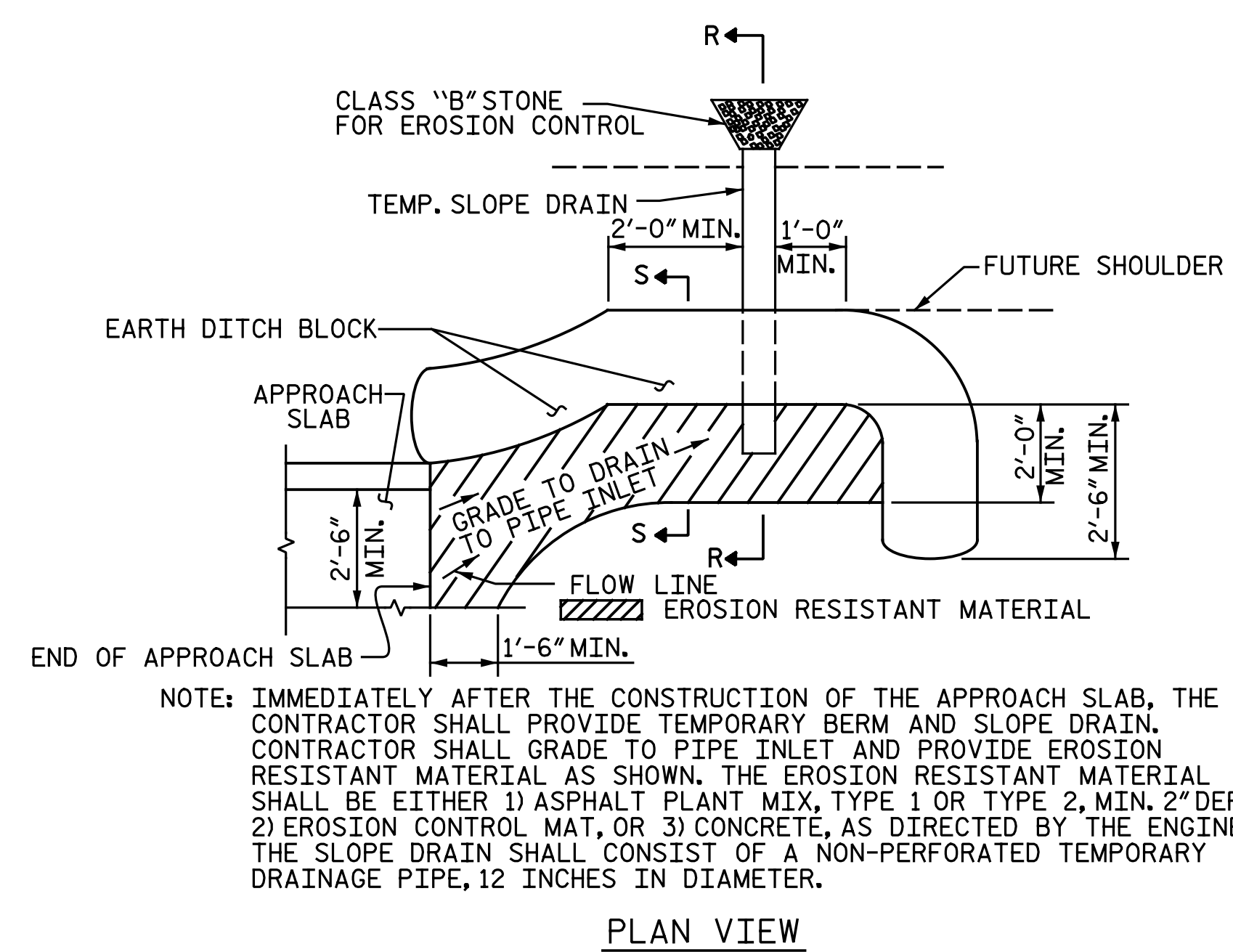
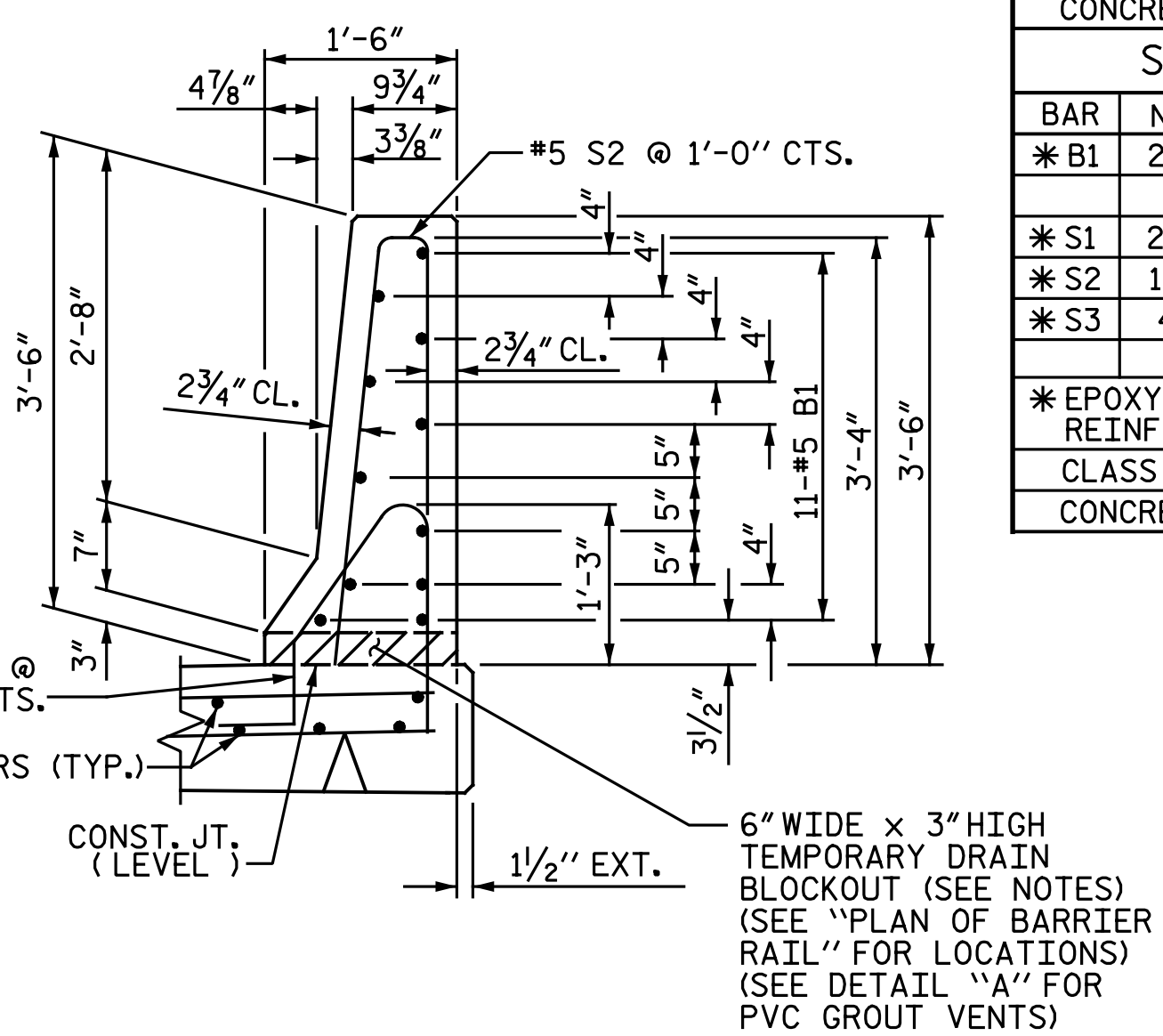
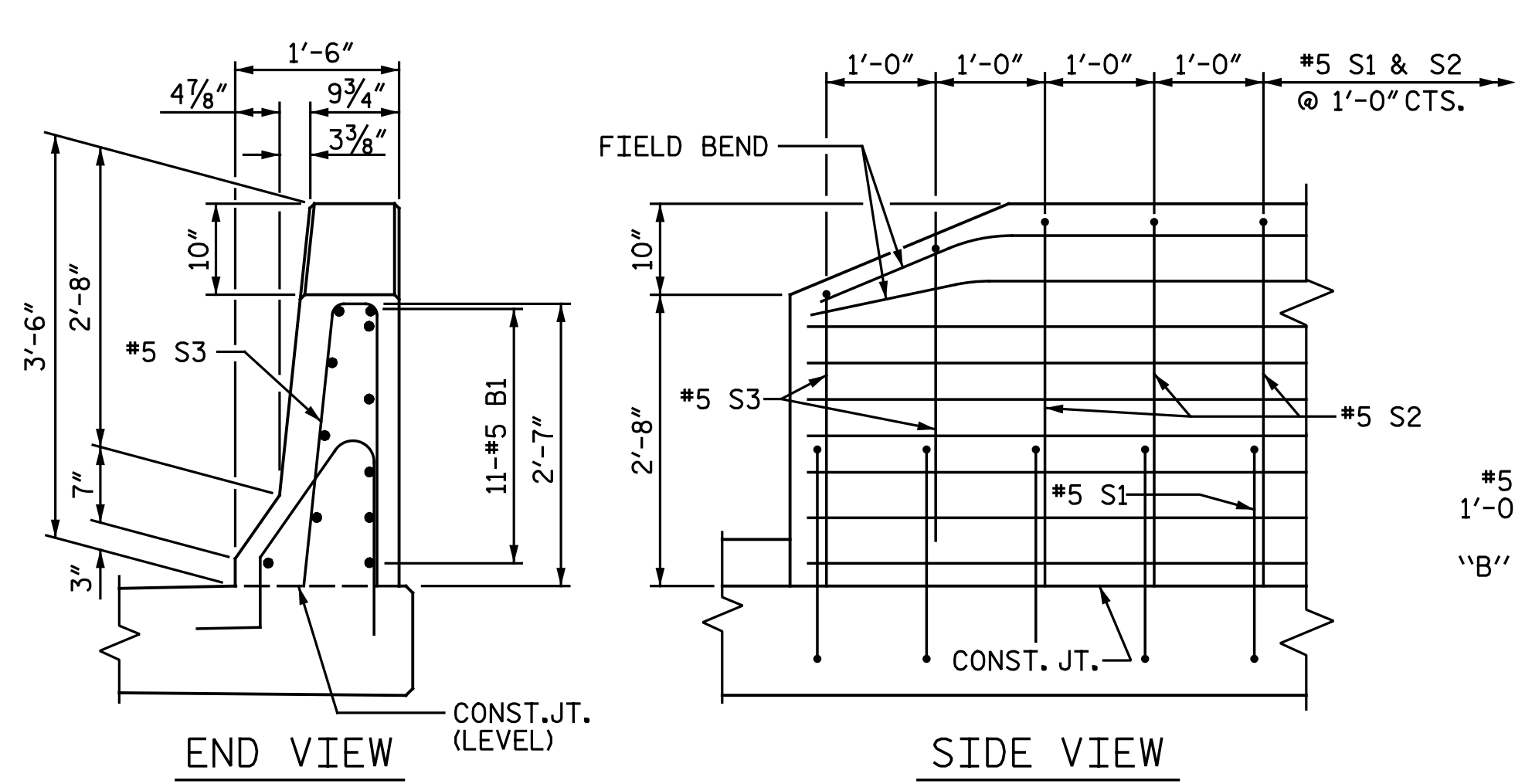
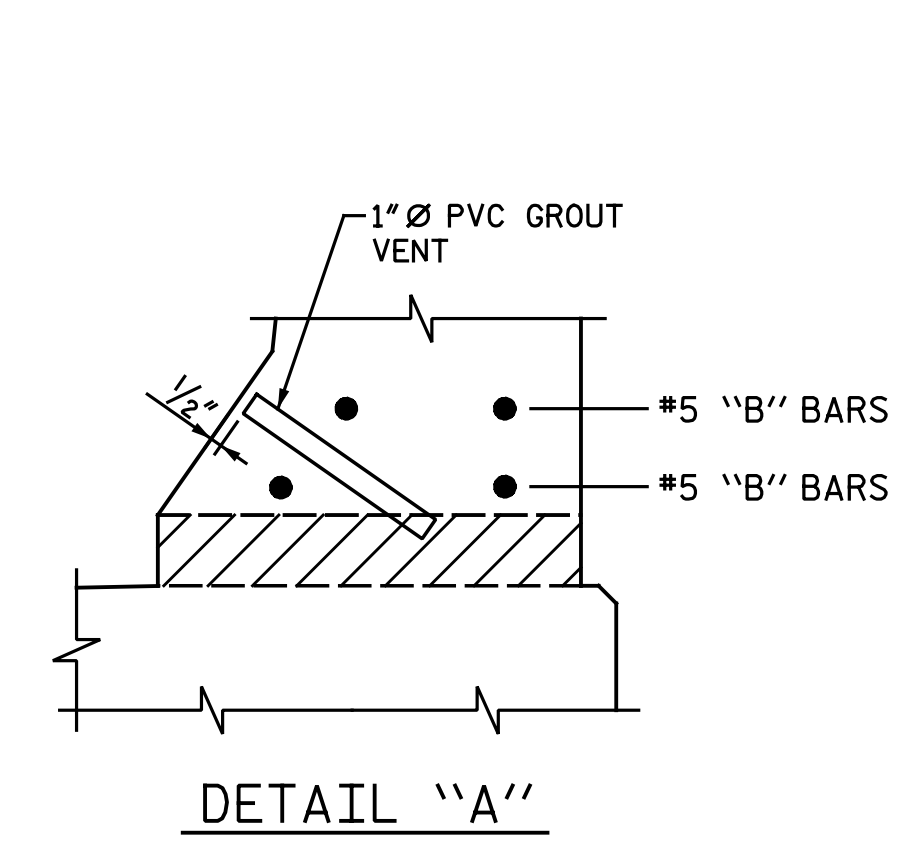
BAR	NO.	SIZE	TYPE	LENGTH	WEIGHT
* B1	22	#5	STR.	9'-8"	222
* S1	20	#5	1	5'-1"	106
* S2	16	#5	2	7'-0"	117
* S3	4	#5	2	5'-6"	23

* EPOXY COATED REINFORCING STEEL LBS. 468
CLASS AA CONCRETE CU. YDS. 2.7
CONCRETE BARRIER RAIL LIN. FT. 20.13

STAGE I (RIGHT SIDE)

BAR	NO.	SIZE	TYPE	LENGTH	WEIGHT
* B1	22	#5	STR.	9'-8"	222
* S1	20	#5	1	5'-1"	106
* S2	16	#5	2	7'-0"	117
* S3	4	#5	2	5'-6"	23

* EPOXY COATED REINFORCING STEEL LBS. 468
CLASS AA CONCRETE CU. YDS. 2.7
CONCRETE BARRIER RAIL LIN. FT. 20.13



PROJECT NO. I-5986B

JOHNSTON COUNTY

STATION: 1260+34.00 -L-

SHEET 3 OF 4

STATE OF NORTH CAROLINA
DEPARTMENT OF TRANSPORTATION
RALEIGH

BRIDGE APPROACH SLAB DETAILS

DRAWN BY: N. B. SPEAKS DATE: 3-27-19

CHECKED BY: J. M. GARRISON DATE: 6-10-19

DOCUMENT NOT CONSIDERED FINAL UNLESS ALL SIGNATURES COMPLETED

NO.	REVISIONS			NO.	REVISIONS			SHEET NO.
	BY:	DATE:	DATE:		BY:	DATE:	DATE:	
1				3			SI-56	
2				4			TOTAL SHEETS 57	

Michael Baker International

Michael Baker Engineering
8000 Regency Parkway, Suite 600
Cary, North Carolina 27518
NC License No.: F-1084