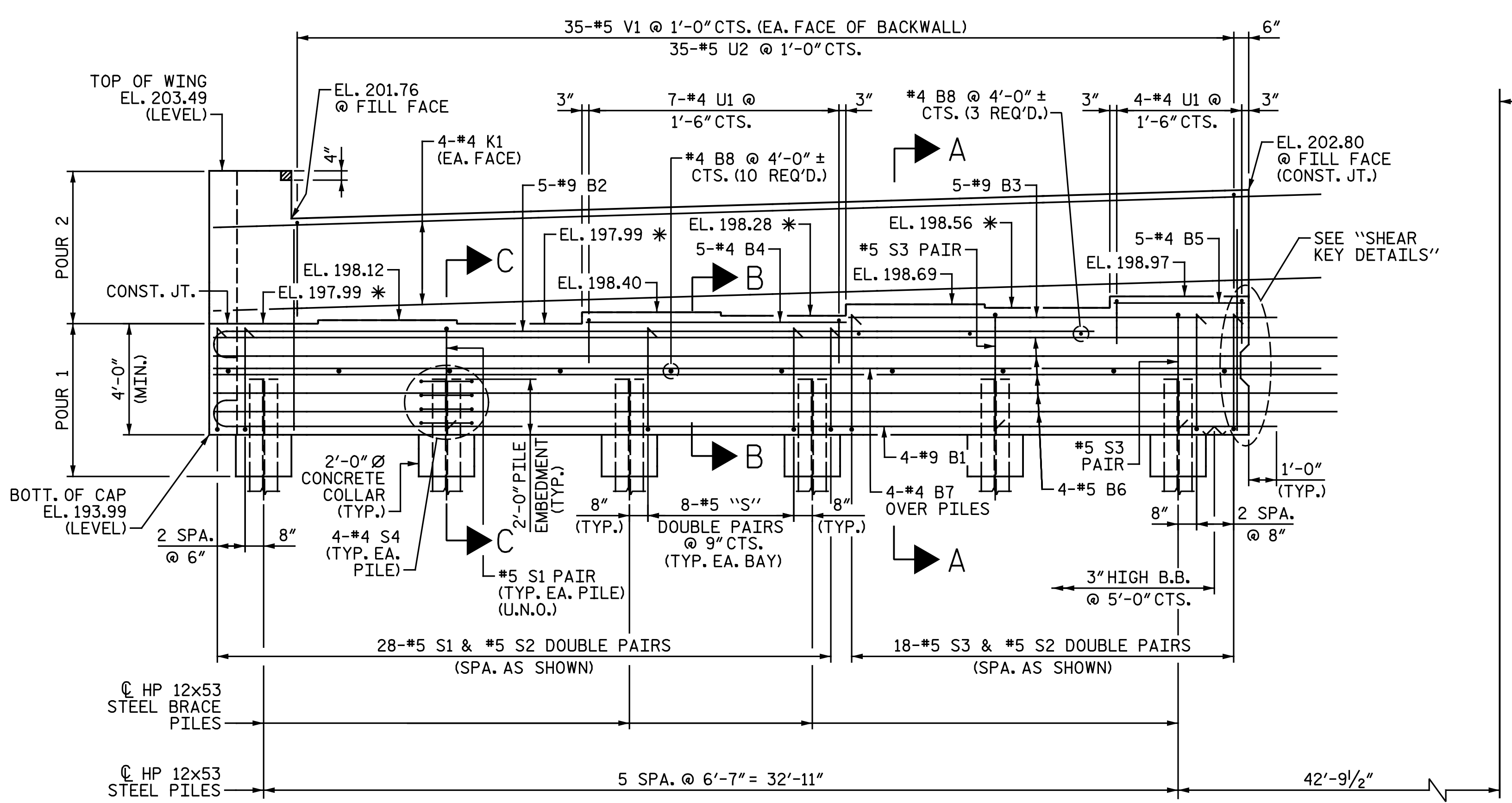


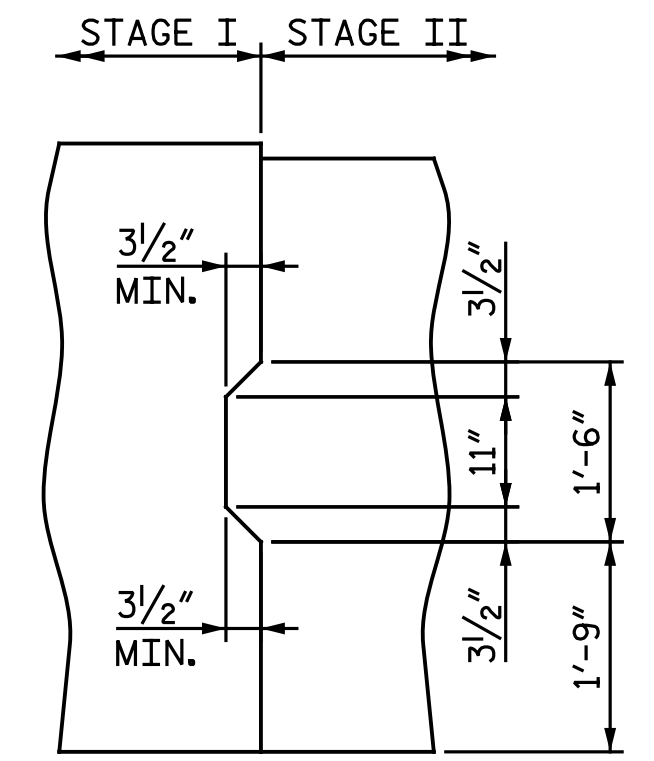
PLAN - STAGE I (LEFT SIDE)



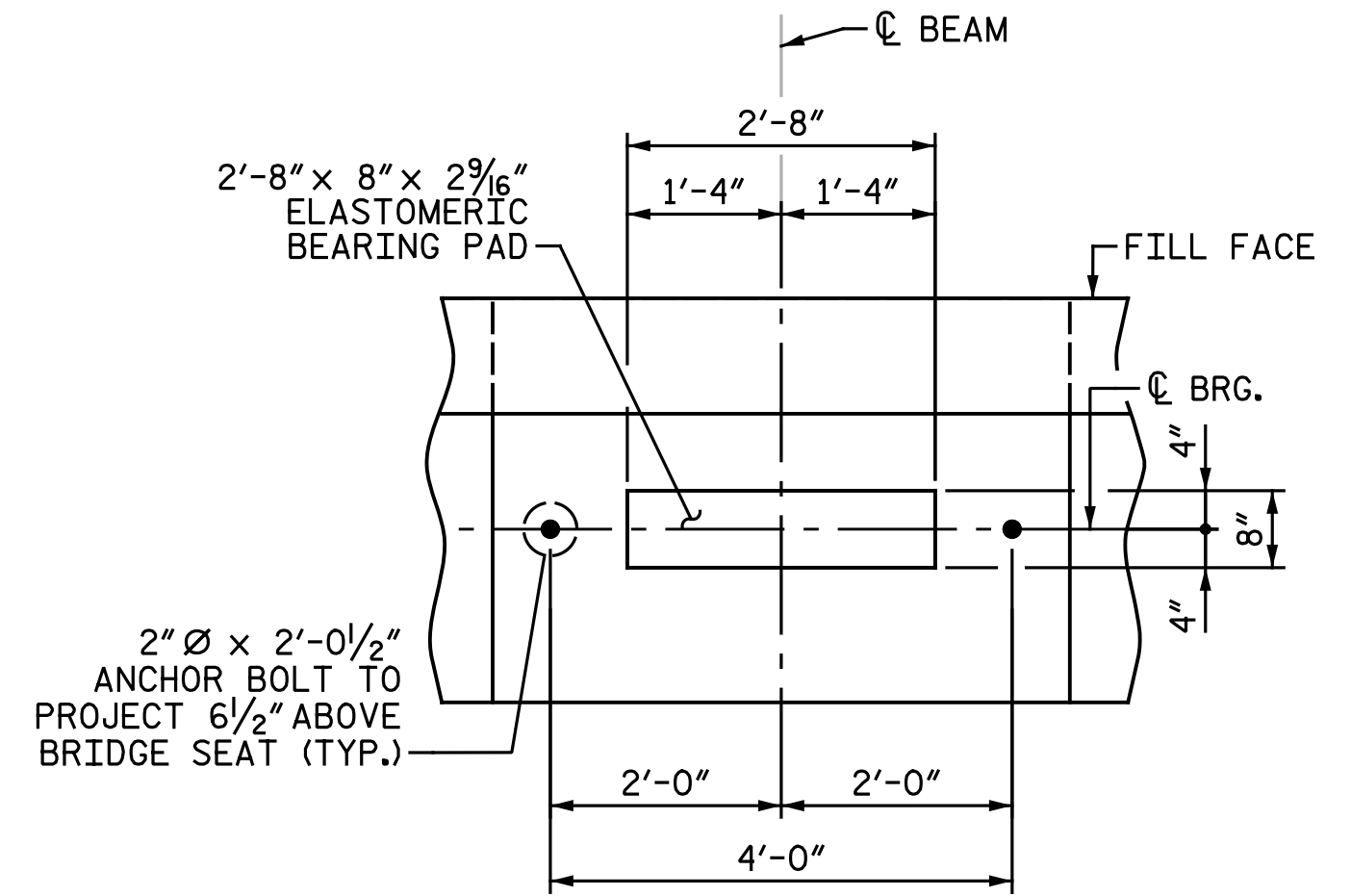
ELEVATION - STAGE I (LEFT SIDE)

\* FOR LOCATION OF ELEVATIONS BETWEEN BRIDGE SEAT BUILD-UPS, SEE "END BENT 2 DETAILS" SHEET. U.N.O. DENOTES "UNLESS NOTED OTHERWISE"

**NOTES:**  
 FOR "SECTION A-A", "PARTIAL SECTION B-B", AND "PARTIAL SECTION C-C", SEE "END BENT 2 DETAILS" SHEET.  
 STIRRUPS & "U" BARS IN CAP MAY BE SHIFTED AS NECESSARY TO CLEAR ANCHOR BOLTS.  
 BACKWALL SHALL BE PLACED BEFORE APPLYING THE EPOXY PROTECTIVE COATING.  
 THE TOP SURFACE AREAS OF THE END BENT CAP SHALL BE CURED IN ACCORDANCE WITH THE STANDARD SPECIFICATIONS EXCEPT THE MEMBRANE CURING COMPOUND SHALL NOT BE USED.  
 THE TOP SURFACE OF THE CAP EXCEPT THE BRIDGE SEAT BUILD-UPS SHALL BE SLOPED TRANSVERSELY FROM THE FILL FACE TO THE BACK FACE AT A RATE OF 2%.  
 THE CONCRETE IN THE HATCHED AREA OF THE WING SHALL BE POURED AFTER THE BARRIER RAIL IS CAST IF SLIP FORMING IS USED.



SHEAR KEY DETAILS



DETAIL "A"  
(TYP. EA. BRIDGE SEAT)

PROJECT NO. I-5986B  
 JOHNSTON COUNTY  
 STATION: 1260+34.00 -L-

SHEET 1 OF 5



DocuSigned by:  
 Todd M. Garrison  
 4/9/2020

DOCUMENT NOT CONSIDERED FINAL  
 UNLESS ALL SIGNATURES COMPLETED

Michael Baker INTERNATIONAL		Michael Baker Engineering 8000 Regency Parkway, Suite 600 Cary, North Carolina 27518 NC License No.: F-1084		REVISIONS			SHEET NO.
NO.	BY:	DATE:	NO.	BY:	DATE:		
1			3			TOTAL SHEETS	
2			4			57	

DRAWN BY: C. E. MAYHEW DATE: 8-12-19  
 CHECKED BY: J. M. GARRISON DATE: 8-15-19