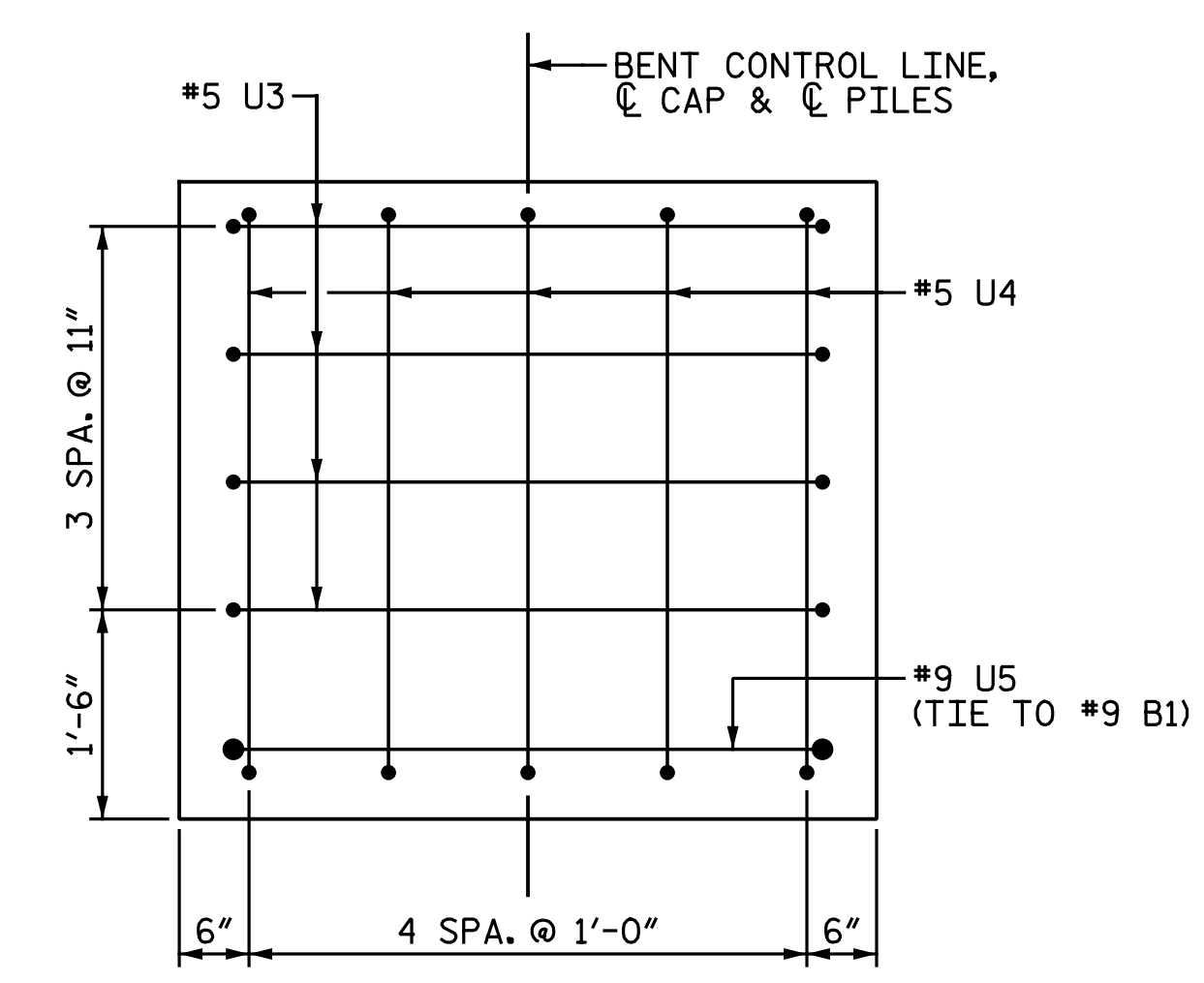
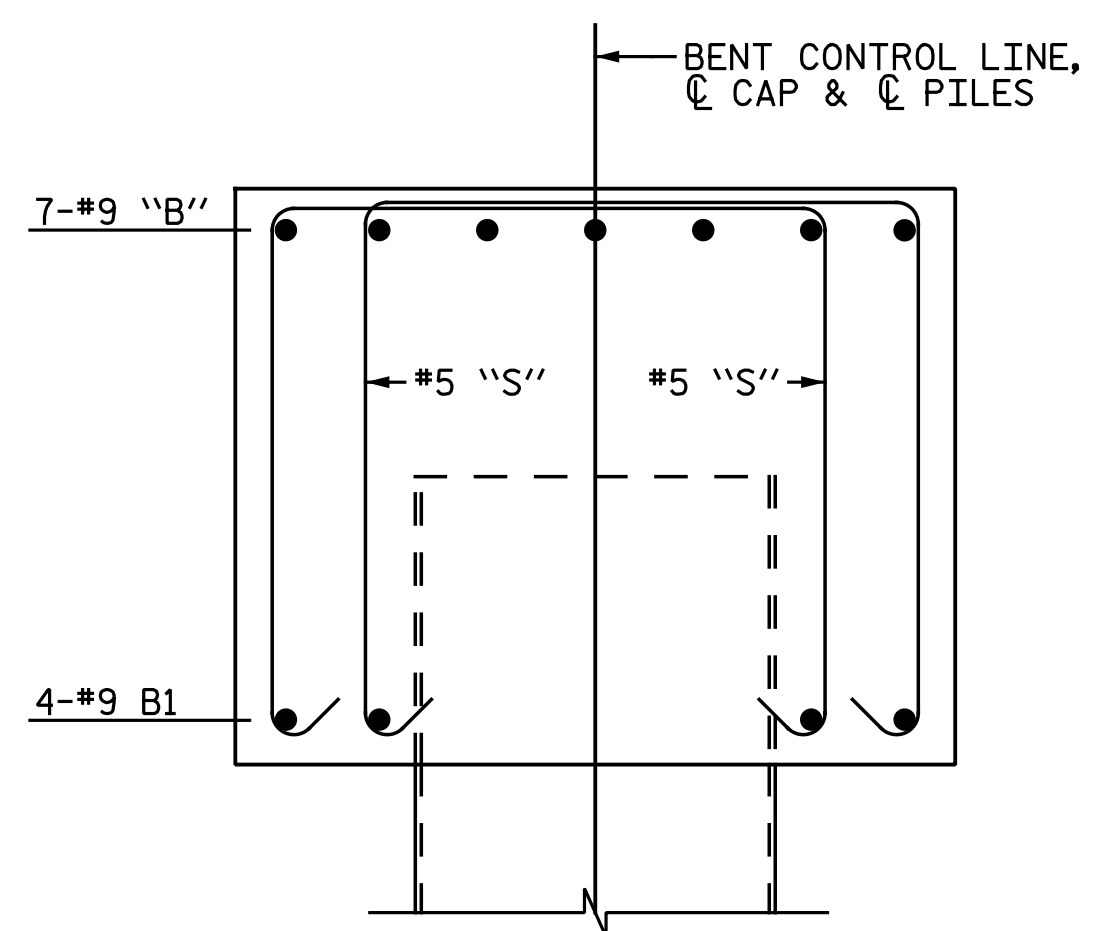


END VIEW X-X

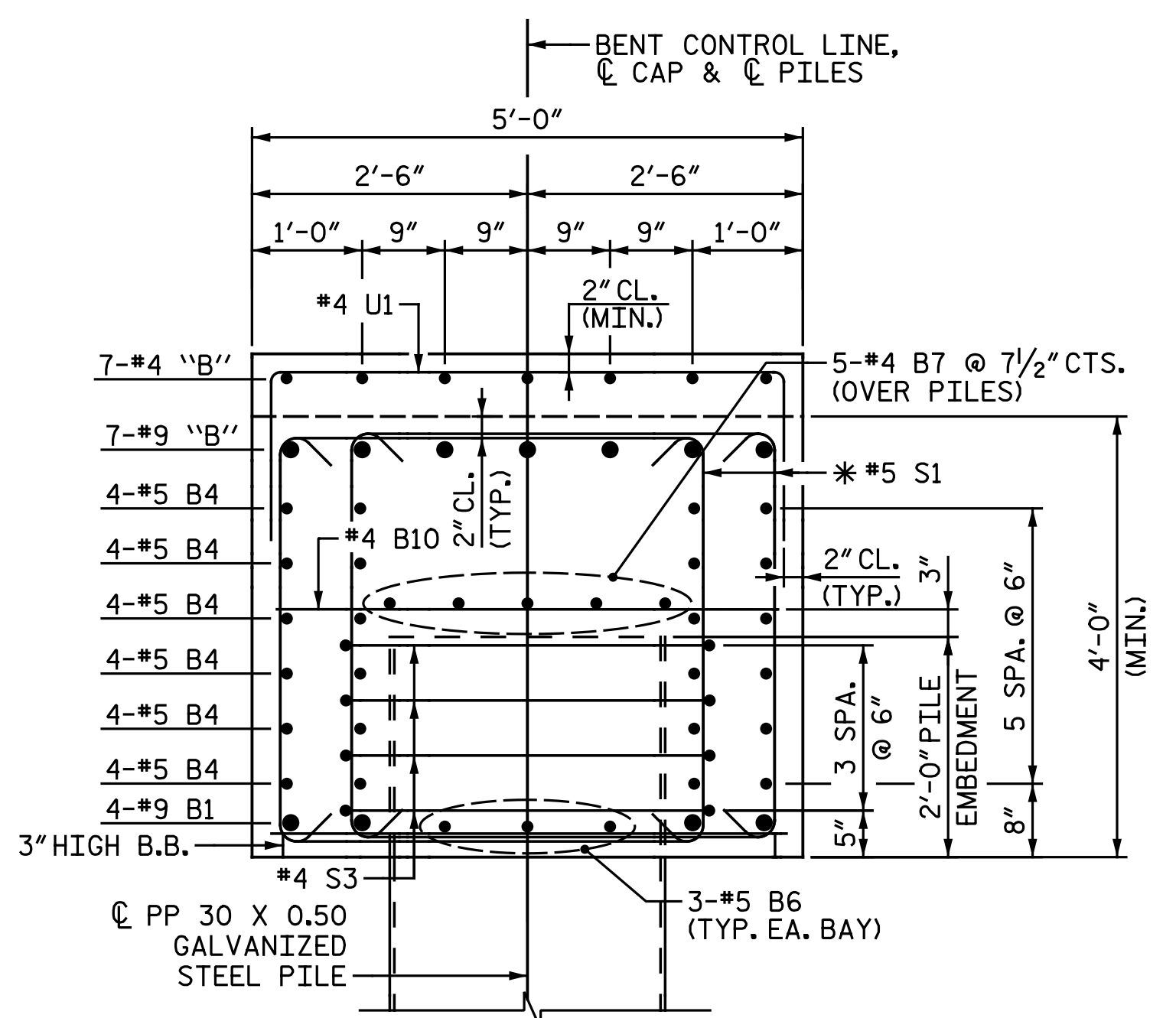


END VIEW Y-Y



SECTION A-A

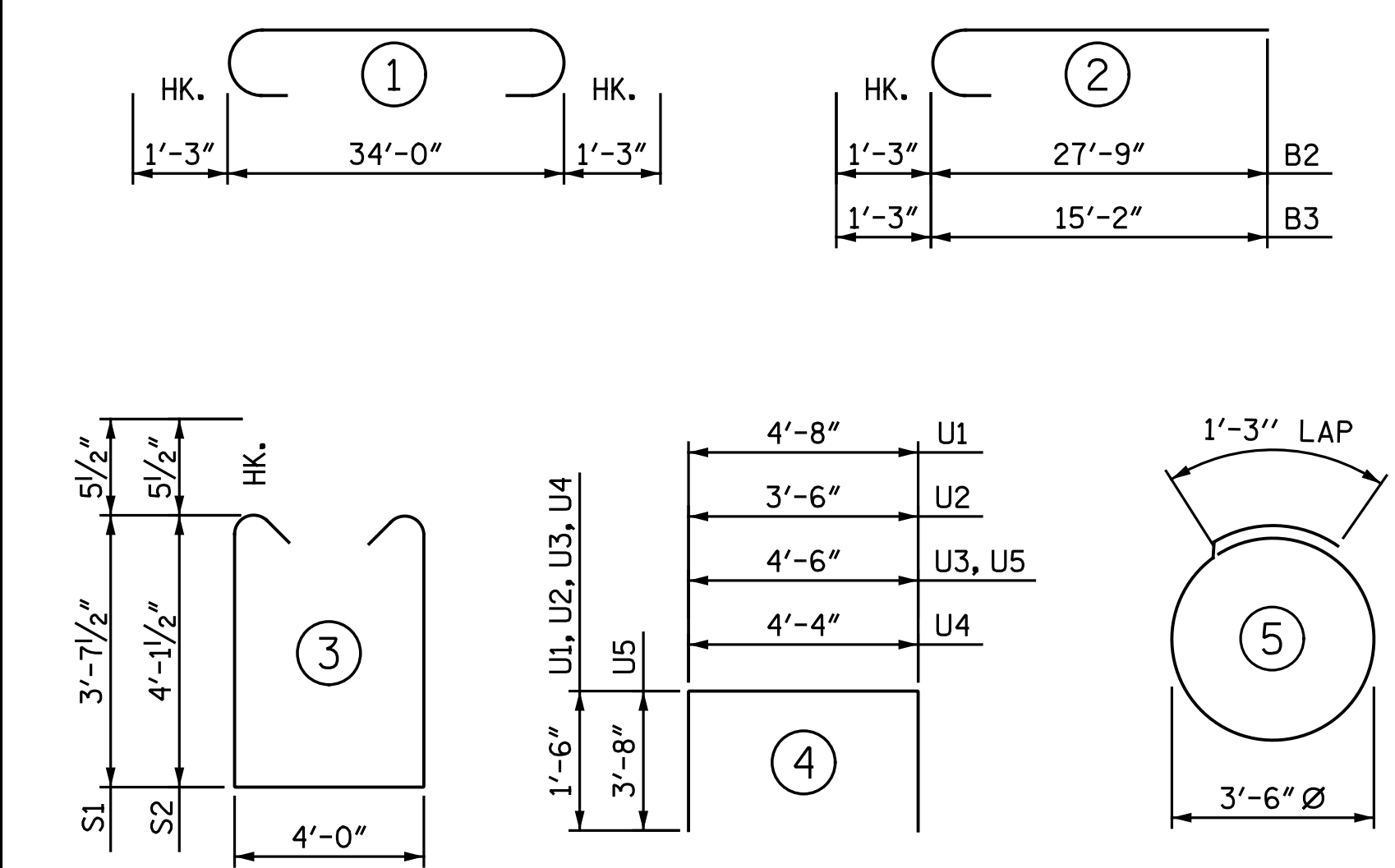
ONLY #9 'B' & #5 'S' BARS SHOWN FOR CLARITY. (TYP. EA. PILE)



SECTION B-B

* INVERT ALTERNATE STIRRUPS

BAR TYPES



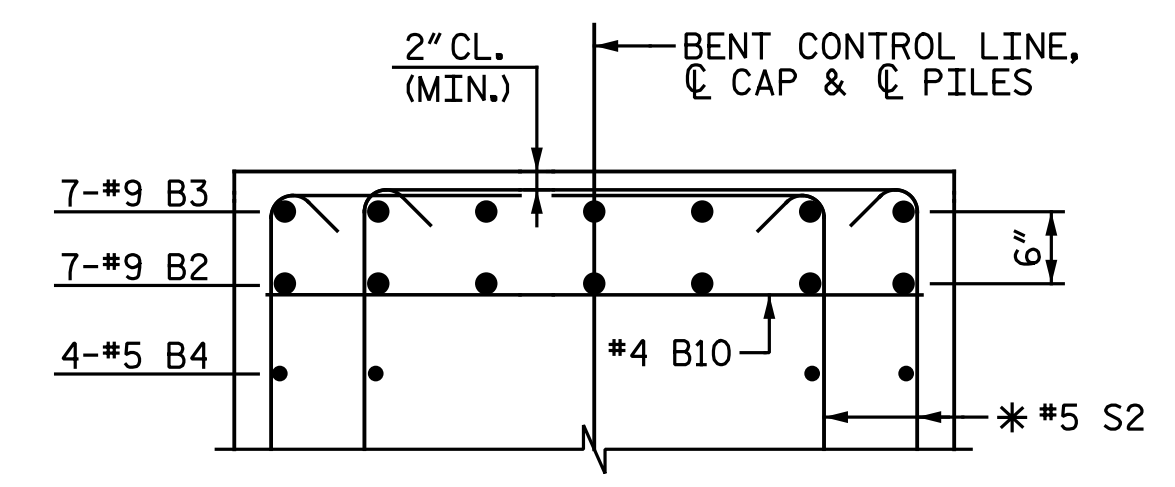
ALL BAR DIMENSIONS ARE OUT TO OUT.

BILL OF MATERIAL

FOR ONE BENT

STAGE I (LEFT SIDE)					STAGE I (RIGHT SIDE)					STAGE II							
BAR	NO.	SIZE	TYPE	LENGTH	WEIGHT	BAR	NO.	SIZE	TYPE	LENGTH	WEIGHT	BAR	NO.	SIZE	TYPE	LENGTH	WEIGHT
B1	4	#9	STR.	34' - 2"	465	B1	4	#9	STR.	34' - 2"	465	B1	8	#9	STR.	34' - 2"	929
B2	7	#9	2	29' - 0"	690	B2	7	#9	2	29' - 0"	690	B4	48	#5	STR.	34' - 2"	1,711
B3	7	#9	2	16' - 5"	391	B3	7	#9	2	16' - 5"	391	B6	18	#5	STR.	6' - 8"	125
B4	24	#5	STR.	34' - 2"	855	B4	24	#5	STR.	34' - 2"	855	B7	10	#4	STR.	34' - 2"	228
B5	4	#5	STR.	9' - 6"	40	B5	4	#5	STR.	9' - 6"	40	B9	14	#4	STR.	5' - 8"	53
B6	9	#5	STR.	6' - 8"	63	B6	9	#5	STR.	6' - 8"	63	B10	18	#4	STR.	4' - 8"	56
B7	5	#4	STR.	34' - 2"	114	B7	5	#4	STR.	34' - 2"	114	B11	14	#9	1	36' - 6"	1,737
B8	7	#4	STR.	9' - 4"	44	B8	7	#4	STR.	9' - 4"	44						
B9	7	#4	STR.	5' - 8"	26	B9	7	#4	STR.	5' - 8"	26	S1	272	#5	3	12' - 2"	3,452
B10	12	#4	STR.	4' - 8"	37	B10	12	#4	STR.	4' - 8"	37	S3	32	#4	5	12' - 3"	262
S1	76	#5	3	12' - 2"	964	S1	76	#5	3	12' - 2"	964	U1	88	#4	4	7' - 8"	451
S2	60	#5	3	13' - 2"	824	S2	60	#5	3	13' - 2"	824	U2	20	#5	4	6' - 6"	136
S3	16	#4	5	12' - 3"	131	S3	16	#4	5	12' - 3"	131	U3	12	#5	4	7' - 6"	94
U1	47	#4	4	7' - 8"	241	U1	47	#4	4	7' - 8"	241	U5	4	#9	4	11' - 10"	161
U2	5	#5	4	6' - 6"	34	U2	5	#5	4	6' - 6"	34						
U3	7	#5	4	7' - 6"	55	U3	7	#5	4	7' - 6"	55						
U4	5	#5	4	7' - 4"	38	U4	5	#5	4	7' - 4"	38						
U5	2	#9	4	11' - 10"	80	U5	2	#9	4	11' - 10"	80						
REINFORCING STEEL					LBS. 5,092	REINFORCING STEEL					LBS. 5,092	REINFORCING STEEL					LBS. 9,395
CLASS A CONCRETE					C.Y. 26.6	CLASS A CONCRETE					C.Y. 26.6	CLASS A CONCRETE					C.Y. 50.3
PILE DRIVING EQUIPMENT SETUP FOR PP 30 X 0.50 GALVANIZED STEEL PILES					EA. 4	PILE DRIVING EQUIPMENT SETUP FOR PP 30 X 0.50 GALVANIZED STEEL PILES					EA. 4	PILE DRIVING EQUIPMENT SETUP FOR PP 30 X 0.50 GALVANIZED STEEL PILES					EA. 8
PP 30 X 0.50 GALVANIZED STEEL PILES					NO. 4 LIN. FT. 320	PP 30 X 0.50 GALVANIZED STEEL PILES					NO. 4 LIN. FT. 320	PP 30 X 0.50 GALVANIZED STEEL PILES					NO. 8 LIN. FT. 640
PIPE PILE PLATES					EA. 4	PIPE PILE PLATES					EA. 4	PIPE PILE PLATES					EA. 8
PILE REDRIVES					EA. 2	PILE REDRIVES					EA. 2	PILE REDRIVES					EA. 4

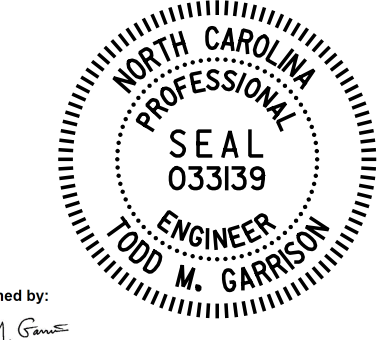
▲ CONCRETE DISPLACED BY PLUGGED PP 30 X 0.50 GALVANIZED STEEL PILES HAS BEEN DEDUCTED FROM BENT CAP CLASS A CONCRETE QUANTITY.



PARTIAL SECTION C-C

* INVERT ALTERNATE STIRRUPS

PROJECT NO. I-5986B
 JOHNSTON COUNTY
 STATION: 1260+34.00 -L-
 SHEET 4 OF 4



DOCUMENT NOT CONSIDERED FINAL UNLESS ALL SIGNATURES COMPLETED

Michael Baker International
 Michael Baker Engineering
 8000 Regency Parkway, Suite 600
 Cary, North Carolina 27518
 NC License No.: F-1084

STATE OF NORTH CAROLINA
 DEPARTMENT OF TRANSPORTATION
 RALEIGH
 SUBSTRUCTURE
 BENTS 1 & 2
 DETAILS

REVISIONS						SHEET NO.
NO.	BY:	DATE:	NO.	BY:	DATE:	SI-46
1			3			TOTAL SHEETS
2			4			57

DRAWN BY: C. E. MAYHEW DATE: 2-3-20
 CHECKED BY: J. M. GARRISON DATE: 2-5-20