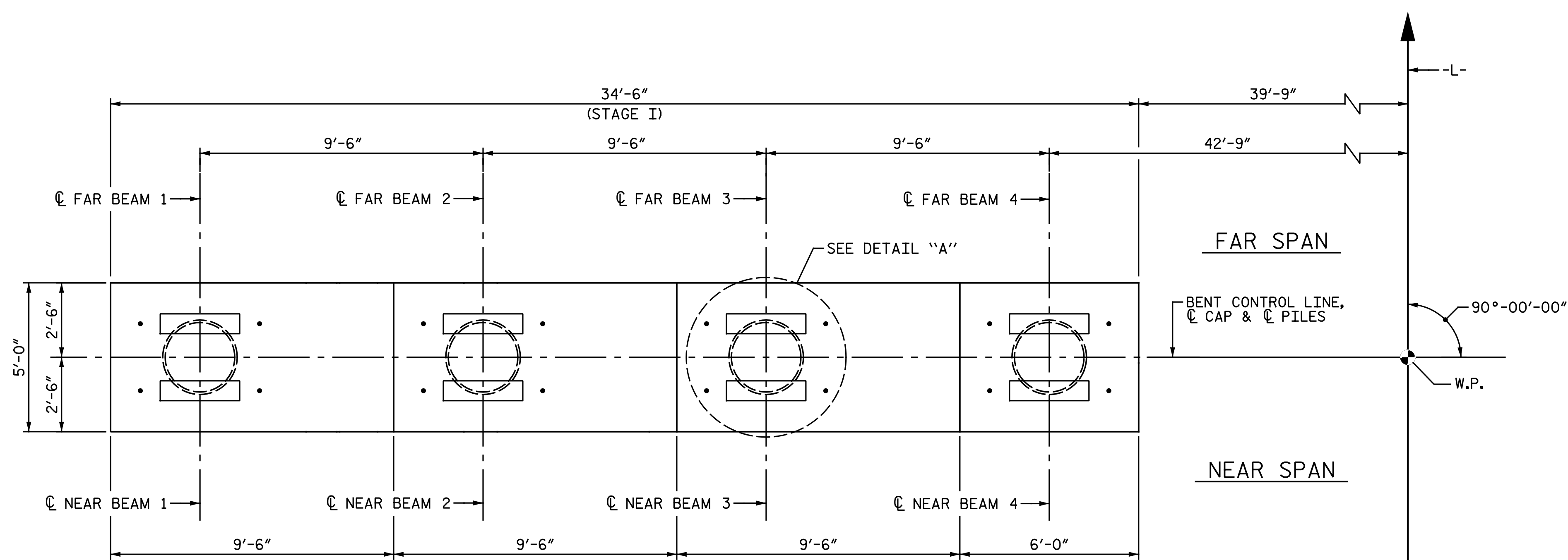
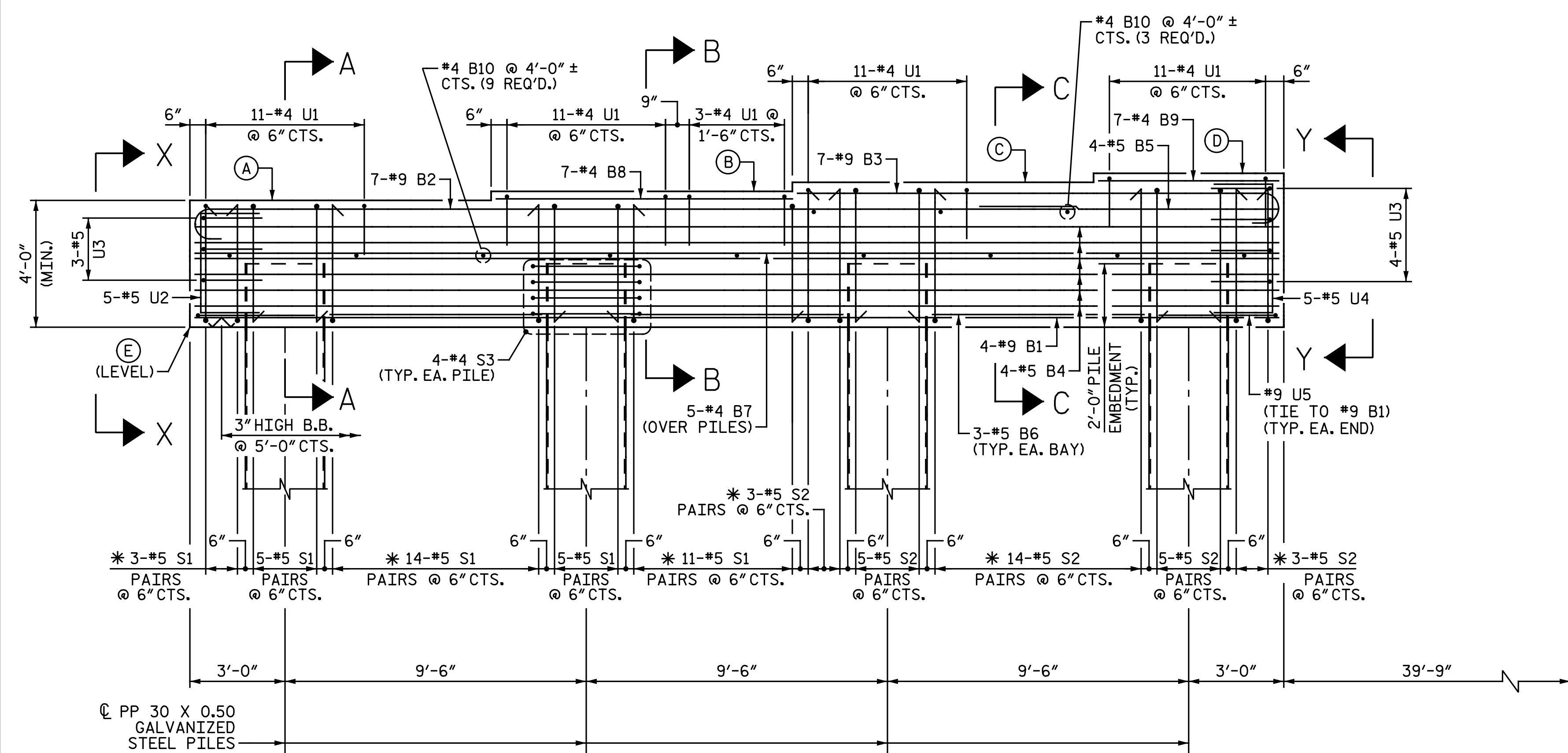
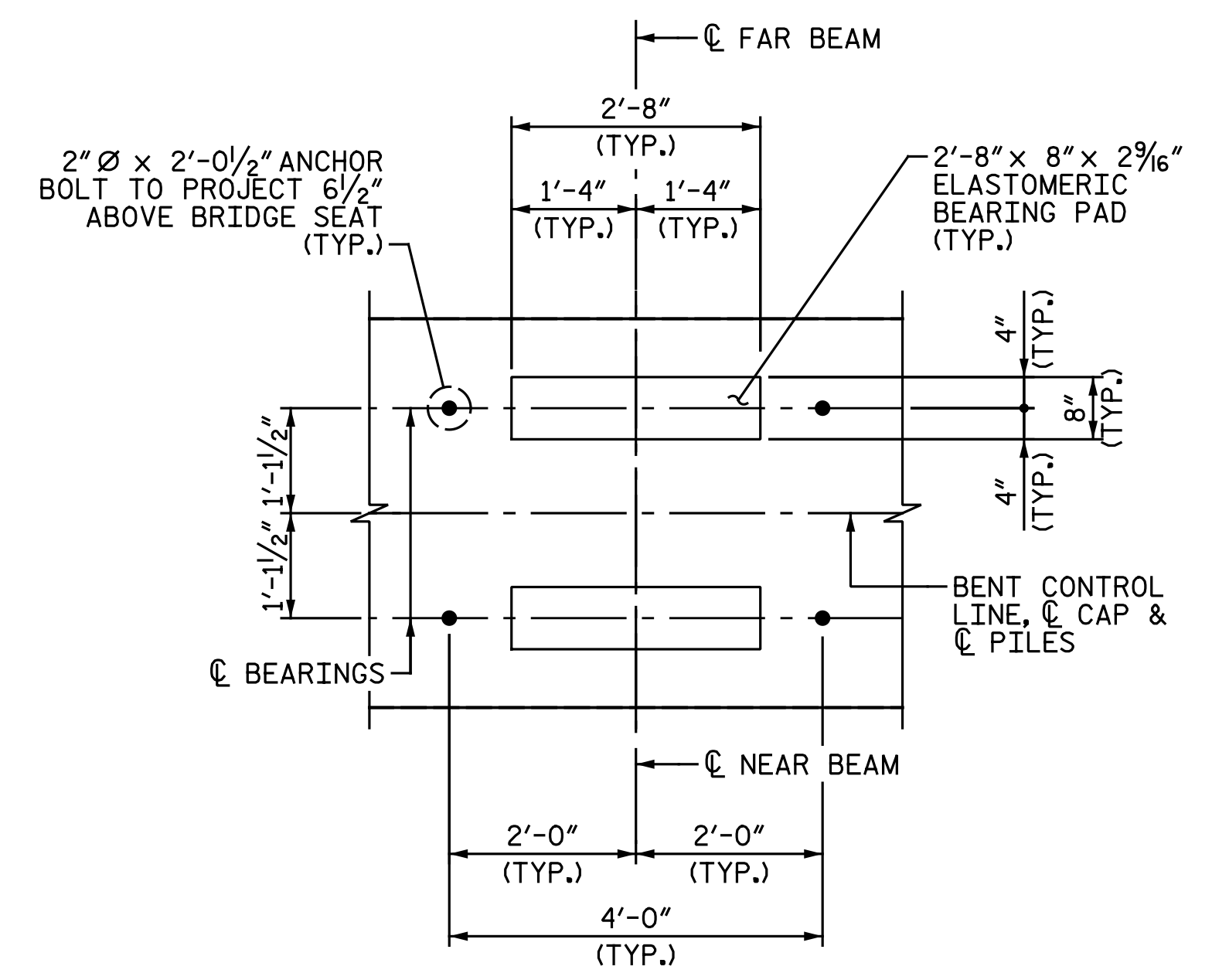


NOTES:
 FOR "SECTION A-A", "SECTION B-B" & "PARTIAL SECTION C-C", SEE "BENTS 1 & 2 DETAILS" SHEET.
 FOR "END VIEW X-X" & "END VIEW Y-Y", SEE "BENTS 1 & 2 DETAILS" SHEET.
 STIRRUPS & "U" BARS IN CAP MAY BE SHIFTED AS NECESSARY TO CLEAR ANCHOR BOLTS AND PIPE PILE REINFORCING STEEL.
 FOR GALVANIZED STEEL PIPE PILE DETAILS, SEE "30" STEEL PIPE PILE" SHEET.
 GALVANIZE THE TOP OF EACH INTERIOR BENT PILE A MINIMUM OF 25 FEET. GALVANIZE IN ACCORDANCE WITH SECTION 1076 OF THE STANDARD SPECIFICATIONS.

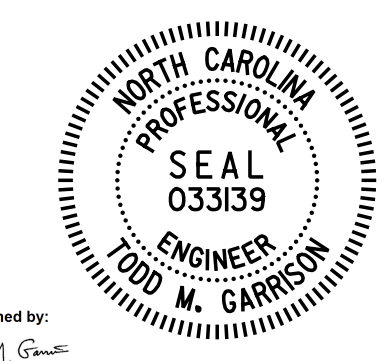


BENT	W.P.	NEAR SPAN	FAR SPAN
1	#2	A	B
2	#3	B	C



BENT CAP ELEVATIONS					
BENT	(A)	(B)	(C)	(D)	(E)
1	198.64	198.93	199.21	199.50	194.64
2	198.33	198.61	198.90	199.18	194.33

PROJECT NO. I-5986B
 JOHNSTON COUNTY
 STATION: 1260+34.00 -L-



DOCUMENT NOT CONSIDERED FINAL
 UNLESS ALL SIGNATURES COMPLETED

Michael Baker International
 Michael Baker Engineering
 8000 Regency Parkway, Suite 600
 Cary, North Carolina 27518
 NC License No.: F-1084

STATE OF NORTH CAROLINA
 DEPARTMENT OF TRANSPORTATION
 RALEIGH
 SUBSTRUCTURE
 BENTS 1 & 2
 STAGE I
 (LEFT SIDE)

REVISIONS						SHEET NO. SI-43
NO.	BY:	DATE:	NO.	BY:	DATE:	
1			3			TOTAL SHEETS
2			4			57

DRAWN BY: C. E. MAYHEW DATE: 2-1-20
 CHECKED BY: J. M. GARRISON DATE: 2-5-20