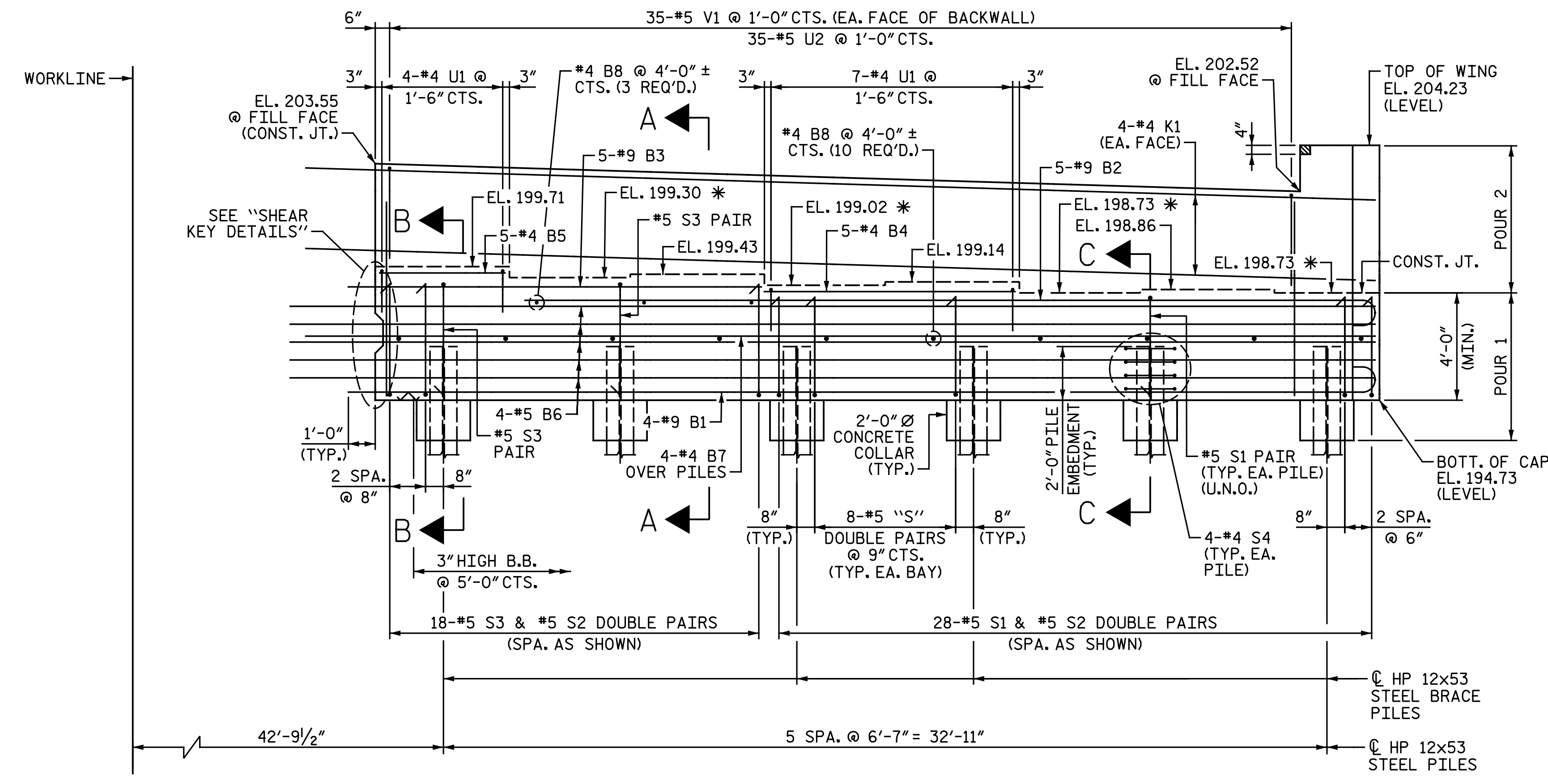
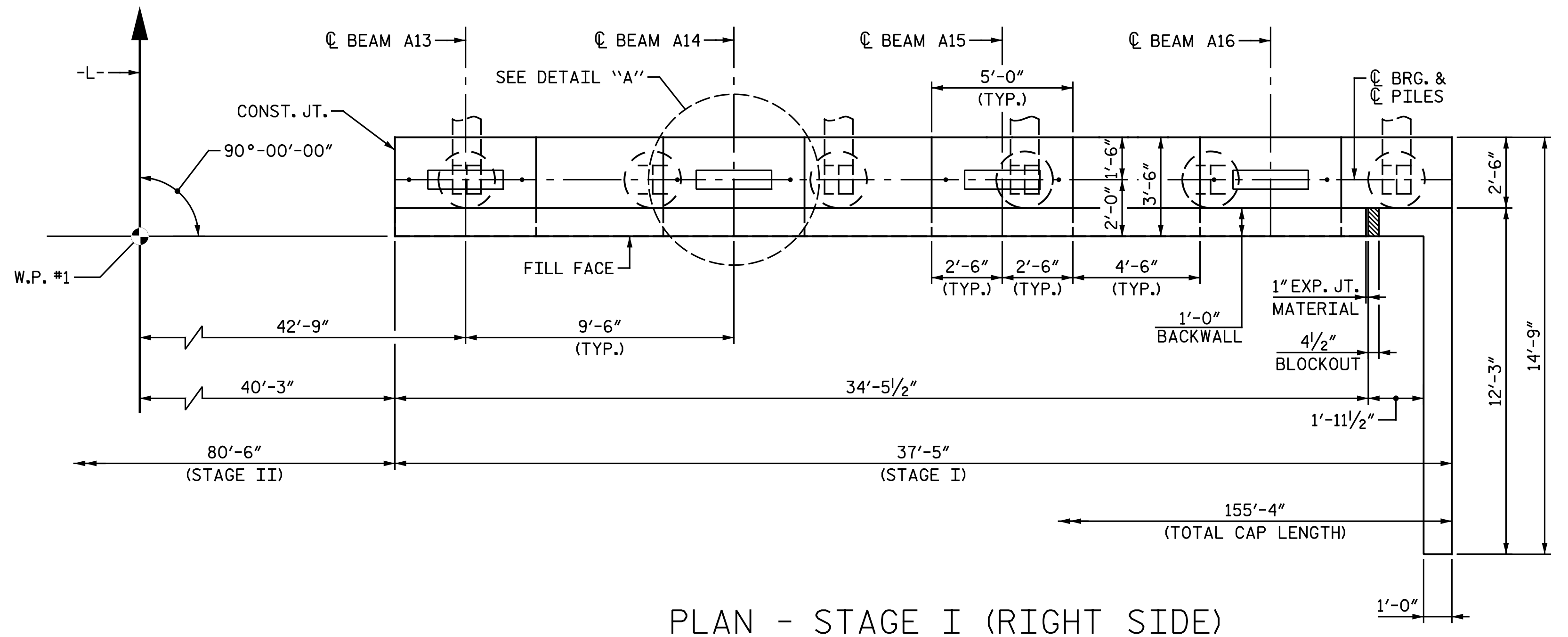
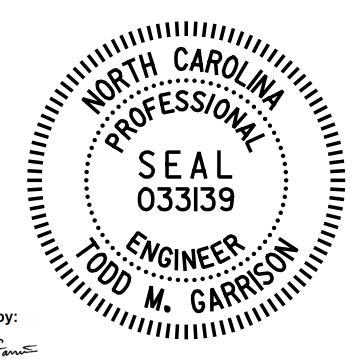


NOTES:
 FOR NOTES, SEE "END BENT 1 STAGE I (LEFT SIDE)" SHEET.
 FOR DETAIL "A", SEE "END BENT 1 STAGE I (LEFT SIDE)" SHEET.
 FOR "SHEAR KEY DETAILS", SEE "END BENT 1 STAGE I (LEFT SIDE)" SHEET.



* FOR LOCATION OF ELEVATIONS BETWEEN BRIDGE SEAT BUILD-UPS, SEE "END BENT 1 DETAILS" SHEET.
 U.N.O. DENOTES "UNLESS NOTED OTHERWISE"

PROJECT NO. I-5986B
JOHNSTON COUNTY
 STATION: 1260+34.00 -L-
 SHEET 2 OF 5



DocuSigned by:
 Todd M. Garrison
 912477233943496
 4/9/2020

DOCUMENT NOT CONSIDERED FINAL
 UNLESS ALL SIGNATURES COMPLETED

STATE OF NORTH CAROLINA
 DEPARTMENT OF TRANSPORTATION
 RALEIGH
 SUBSTRUCTURE
 END BENT 1
 STAGE I
 (RIGHT SIDE)

DRAWN BY : C. E. MAYHEW DATE : 7-17-19
 CHECKED BY : I. M. GARRISON DATE : 7-29-19

REVISIONS						SHEET NO. SI-39
NO.	BY:	DATE:	NO.	BY:	DATE:	
1			3			TOTAL SHEETS
2			4			57

Michael Baker International
 Michael Baker Engineering
 8000 Regency Parkway, Suite 600
 Cary, North Carolina 27518
 NC License No.: F-1084