

NOTES

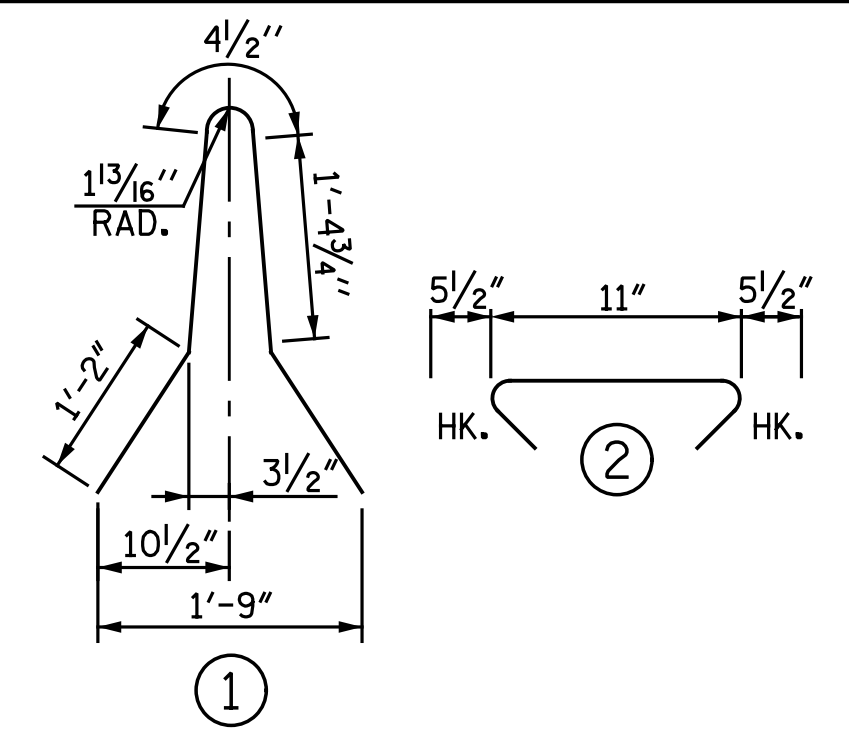
THE CONCRETE MEDIAN BARRIER IN A CONTINUOUS UNIT SHALL NOT BE CAST UNTIL ALL SLAB CONCRETE IN THE UNIT HAS BEEN CAST AND HAS REACHED A MINIMUM COMPRESSIVE STRENGTH OF 3,000 PSI.

ALL REINFORCING STEEL IN CONCRETE MEDIAN BARRIER SHALL BE EPOXY COATED.

GROOVED CONTRACTION JOINTS, 1/2" IN DEPTH, SHALL BE TOOLED IN ALL EXPOSED FACES OF THE CONCRETE MEDIAN BARRIER AND IN ACCORDANCE WITH ARTICLE 825-10(B) OF THE STANDARD SPECIFICATIONS. THE CONTRACTION JOINT SHALL BE LOCATED AT EACH THIRD POINT BETWEEN CONCRETE MEDIAN BARRIER EXPANSION JOINTS. ONLY ONE CONTRACTION JOINT IS REQUIRED AT MIDPOINT OF CONCRETE MEDIAN BARRIER SEGMENTS LESS THAN 20 FEET IN LENGTH AND NO CONTRACTION JOINTS ARE REQUIRED FOR THOSE SEGMENTS LESS THAN 10 FEET IN LENGTH.

THE CONTRACTOR MAY USE ADHESIVELY ANCHORED DOWELS IN PLACE OF THE #5 S2 BARS DETAILED. LEVEL 2 FIELD TESTING IS REQUIRED, AND THE YIELD LOAD OF THE DOWELS IS 19 KIPS. THE DOWELS ARE TO BE HOOKED ON ONE END WITH A PROJECTION MATCHING THAT OF THE #5 S2 BARS. THE OPPOSITE END IS TO BE STRAIGHT AND EMBEDDED 6" INTO THE DECK SLAB.

BAR TYPES



ALL BAR DIMENSIONS ARE OUT TO OUT

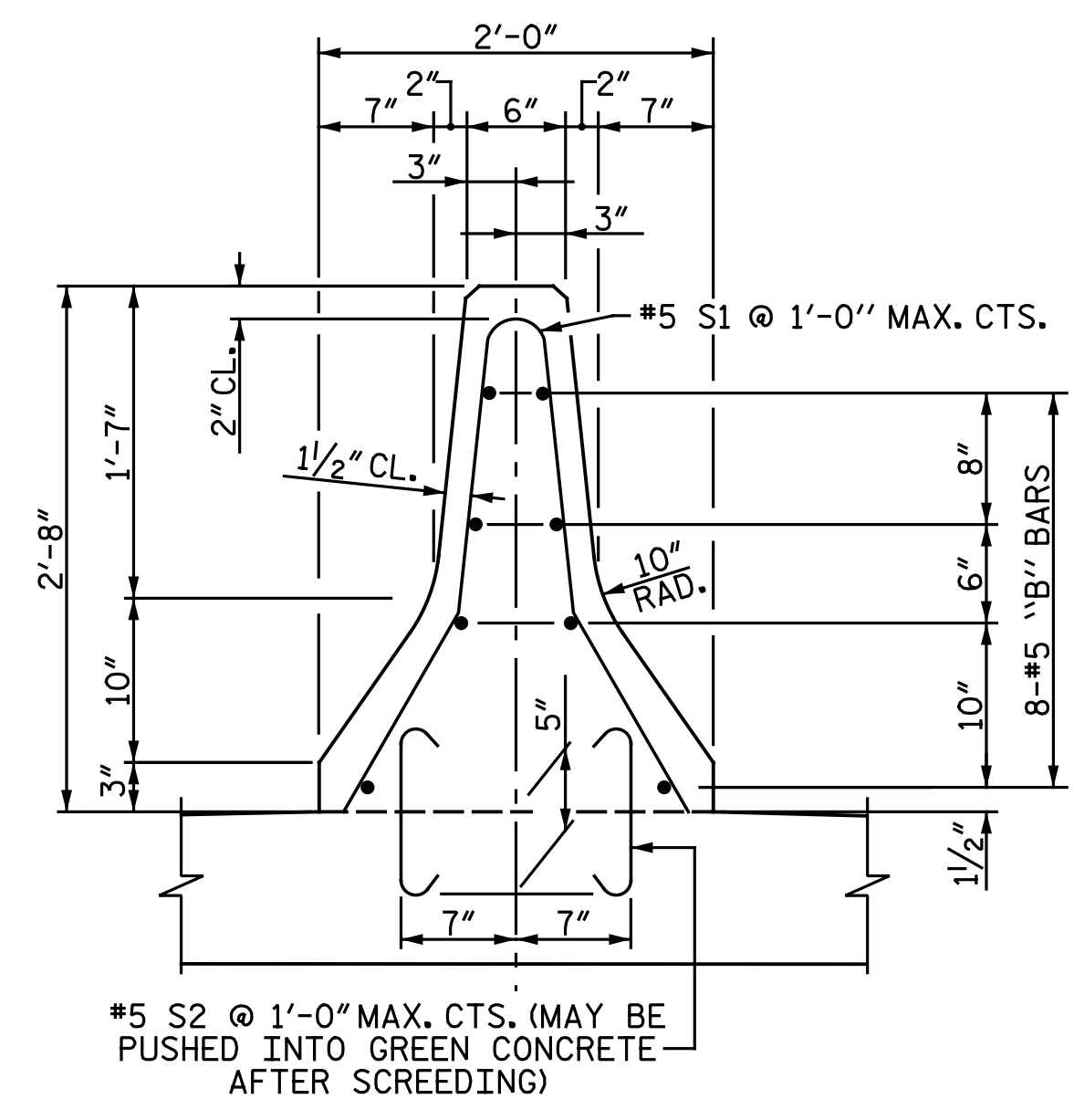
BILL OF MATERIAL

FOR CONCRETE MEDIAN BARRIER ONLY

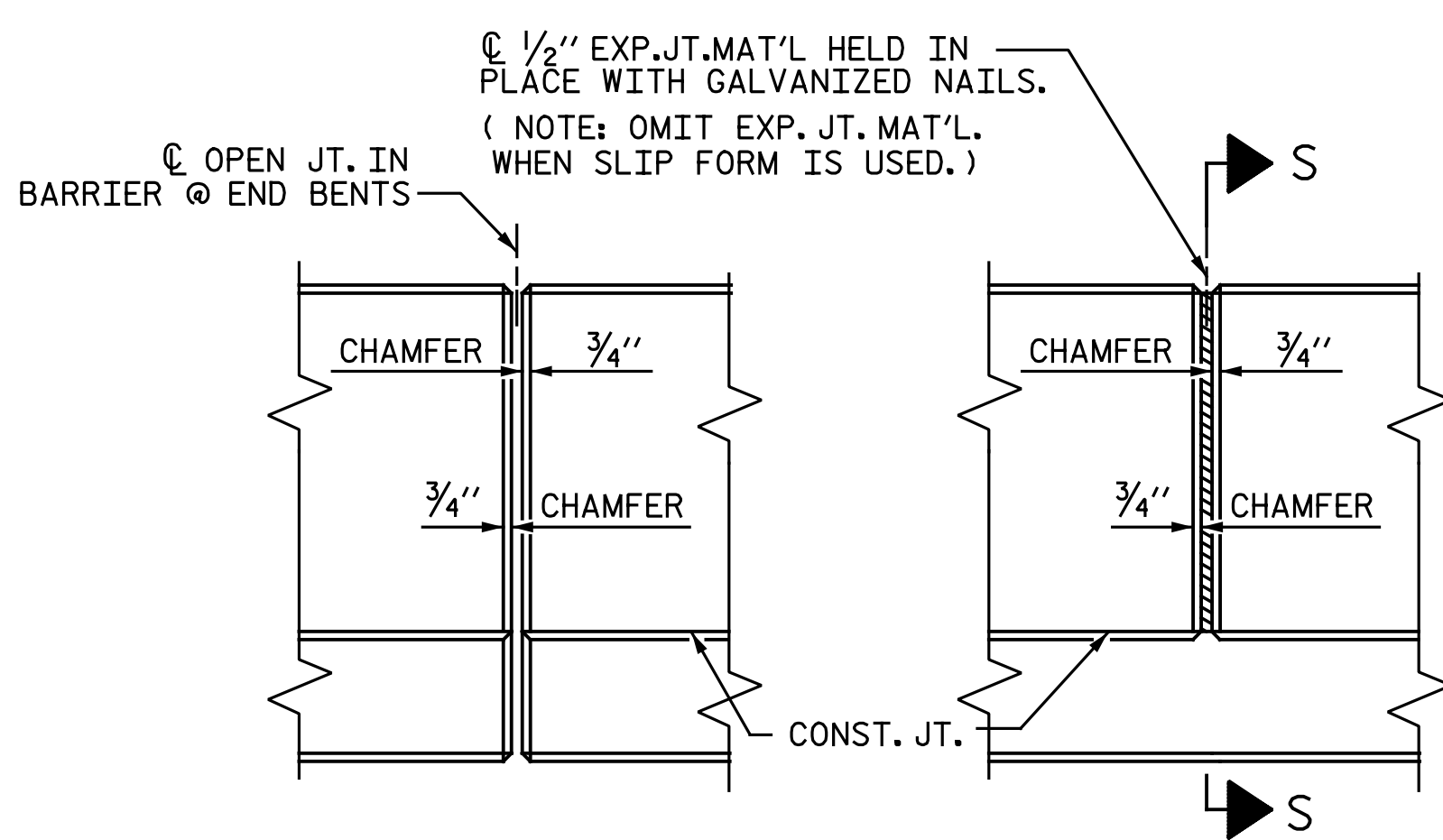
STAGE II

BAR	NO.	SIZE	TYPE	LENGTH	WEIGHT
*B1	64	#5	STR.	25' - 1"	1,674
*B2	16	#5	STR.	19' - 5"	324
*S1	248	#5	1	5' - 6"	1,423
*S2	496	#5	2	1' - 10"	948
*EPOXY COATED REINFORCING STEEL					LBS. 4,369
CLASS AA CONCRETE					CU. YDS. 24.9
CONCRETE MEDIAN BARRIER LIN. FT.					243.71

QUANTITIES DO NOT INCLUDE MEDIAN BARRIERS ON THE APPROACH SLABS. FOR MEDIAN BARRIERS ON THE APPROACH SLABS, SEE "BRIDGE APPROACH SLAB DETAILS" SHEET.

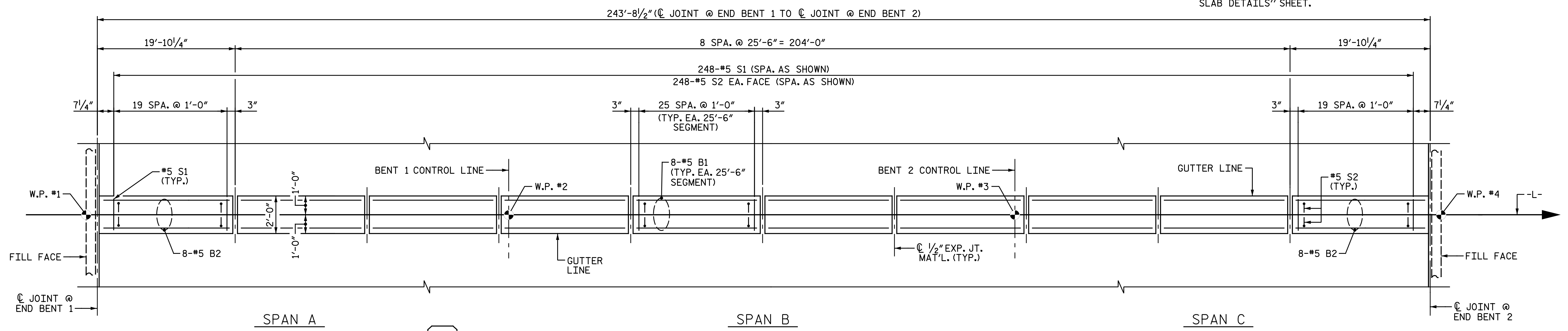


SECTION THRU MEDIAN BARRIER

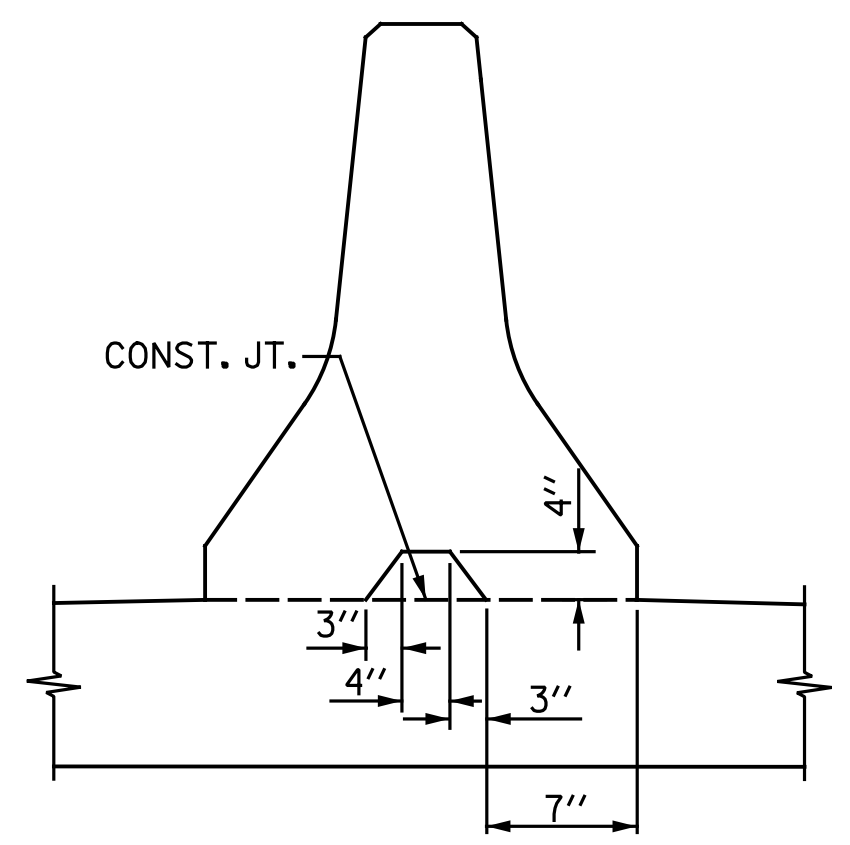


ELEVATION AT EXPANSION JOINTS

MEDIAN BARRIER DETAILS

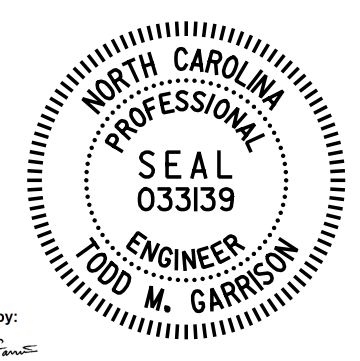


PLAN OF CONCRETE MEDIAN BARRIER



SECTION S-S
AT DAM IN OPEN JOINT
(THIS IS TO BE USED ONLY
WHEN SLIP FORM IS USED)

PROJECT NO. I-5986B
JOHNSTON COUNTY
STATION: 1260+34.00 -L-



DocuSigned by:
Todd M. Garrison
4/9/2020

DOCUMENT NOT CONSIDERED FINAL
UNLESS ALL SIGNATURES COMPLETED

Michael Baker International
Michael Baker Engineering
8000 Regency Parkway, Suite 600
Cary, North Carolina 27518
NC License No.: F-1084

STATE OF NORTH CAROLINA
DEPARTMENT OF TRANSPORTATION
RALEIGH
SUPERSTRUCTURE
CONCRETE
MEDIAN BARRIER

REVISIONS						SHEET NO.
NO.	BY:	DATE:	NO.	BY:	DATE:	SI-31
1			3			TOTAL SHEETS
2			4			57

DRAWN BY: N. B. SPEAKS DATE: 6-4-19
CHECKED BY: I. M. GARRISON DATE: 3-11-20